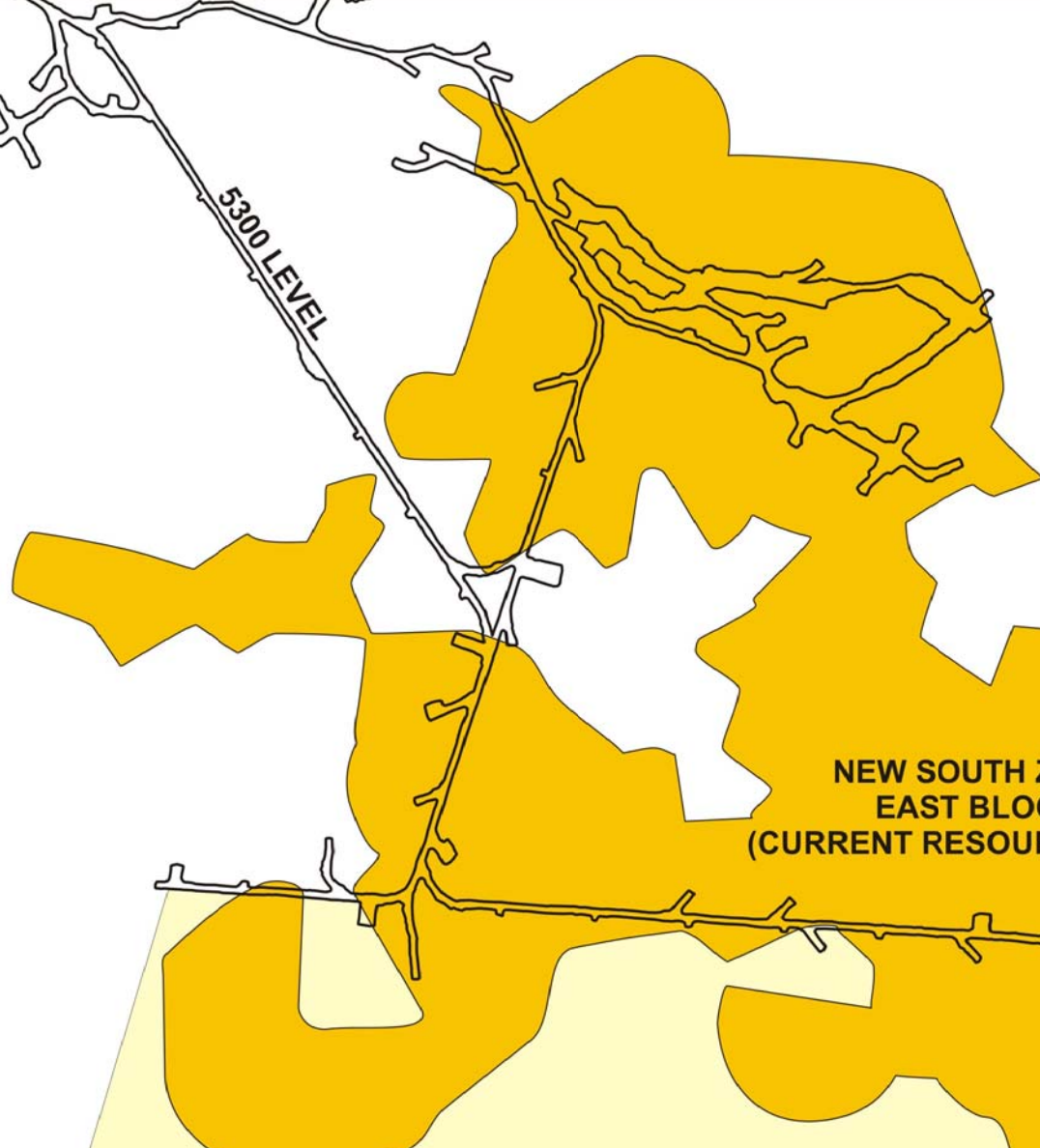


MACASSA
PROPERTY



53-1684
NEW SOUTH
1.22 oz/11.0' CL
NEW SOUTH FW
3.66 oz/12.9' CL

53-1794
NEW SOUTH
1.05 oz/40.5' CL
NEW SOUTH FW
0.93 oz/4.5' CL

53-1685
NEW SOUTH
8.16 oz/52.2' CL

53-1795
NEW SOUTH
2.77 oz/9.6' CL

NEW SOUTH ZONE
EAST BLOCK
(CURRENT RESOURCE AREA)

HM CLAIM

AMALGAMATED
KIRKLAND
PROPERTY

SOUTH
CLAIMS

LEGEND

- KL GOLD (100%)
- KL GOLD (50%) - QUEENSTON (50%)
- 53-1795**
NEW SOUTH
2.77 oz/9.6' CL
NEW DRILL HOLE RESULTS IN OZ/TON
OVER CORE LENGTH (uncut)
- 53-1685**
NEW SOUTH
8.16 oz/52.2' CL
PREVIOUSLY RELEASED DRILL HOLE RESULTS
IN OZ/TON OVER CORE LENGTH (uncut)
- CURRENT DEVELOPMENT (5300 LEVEL)

250 feet

FIGURE 1
**PLAN VIEW SHOWING RECENT NEW SOUTH
ZONE DRILL HOLE RESULTS, MACASSA MINE,
KIRKLAND LAKE, ONTARIO**
JUNE 1, 2011



**B-20 ELECTRIC
DRILL (5300 L)
WEST MACASSA**

#3
SHAFT

**B-10 ELECTRIC
DRILL (5000 L)**

**53-1520
'08 BREAK?
6.14 oz/13.7' CL**

**WEST
MACASSA**

'08 WEST

'08 CENTRAL

'08 EAST

**B-20 ELECTRIC
DRILL (5300 L)
DEEP '04**

**B-10 ELECTRIC
DRILL (5300 L)
'08 BREAK**

**B-20 ELECTRIC
DRILL (5300 L)
DEEP MAIN '04
& JV SMC**

**PROPOSED
DEVELOPMENT
FOR FY 2012**

LEGEND

-  KL Gold (100%)
-  KL Gold (50%) - Queenston (50%)
-  Approximate Outline of SMC
-  5000 Level
-  5300 Level
-  Planned Development

1000 feet

FIGURE 2
**PLAN VIEW SHOWING CURRENT & UPCOMING
EXPLORATION DRILL PROGRAMS, MACASSA
MINE, KIRKLAND LAKE, ONTARIO**
JUNE 1, 2011