

264500

265000

265500

266000

8707000

8707000

8706500

8706500

8706000

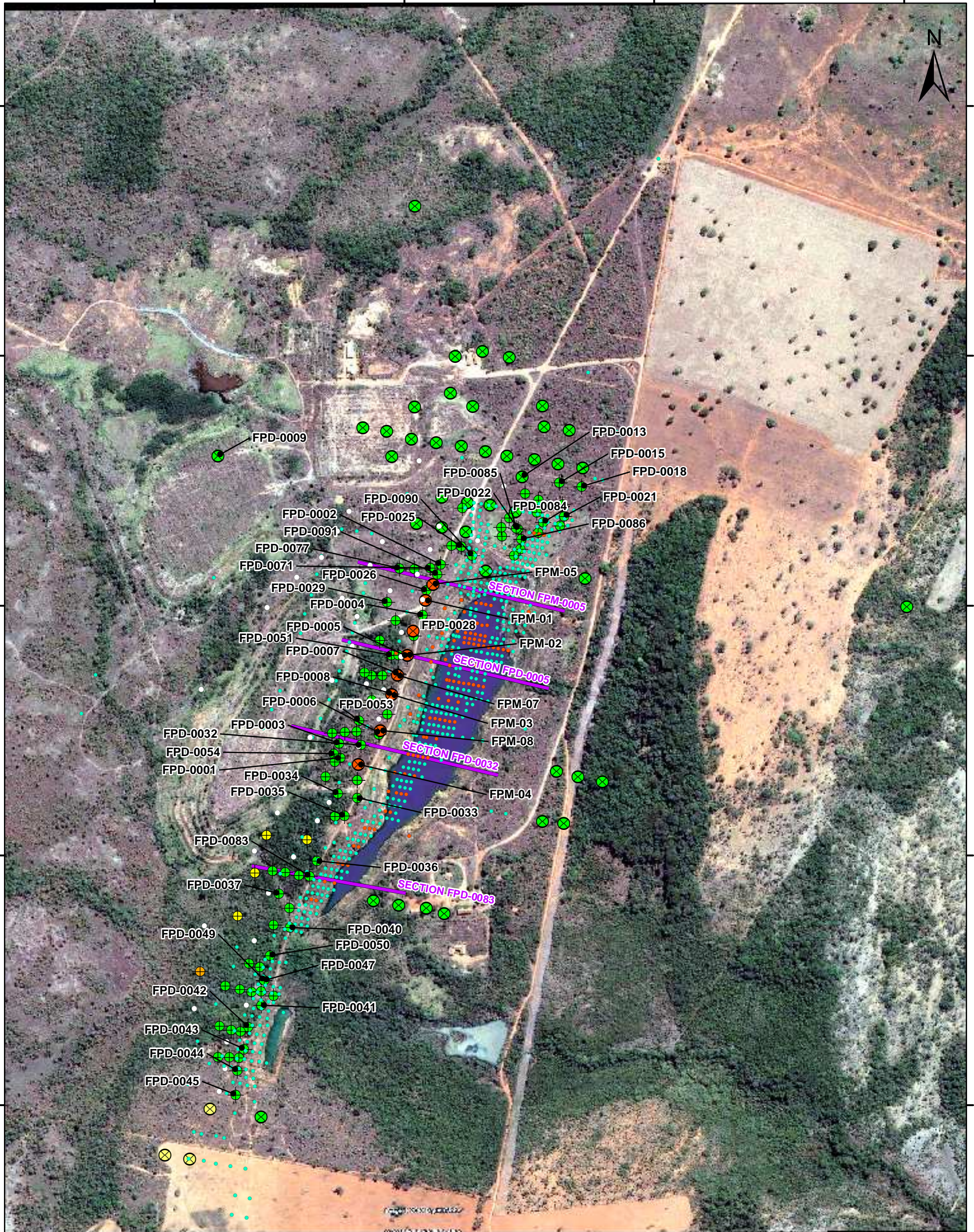
8706000

8705500

8705500

8705000

8705000



264500

265000

265500

266000

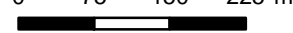
- | | |
|-------------------------|-----------|
| Drilling | Drilling |
| Type/Status | ● METAGO |
| ● Extension/Executed | ○ MSE |
| ● Extension/In Progress | ● VALE |
| ● Extension/Programmed | — Section |
| ● In Fill/Executed | |
| ● In Fill/In Progress | |
| ● In Fill/Programmed | |
| ● Metal | |



Rio Novo
GOLD INC

1:7500

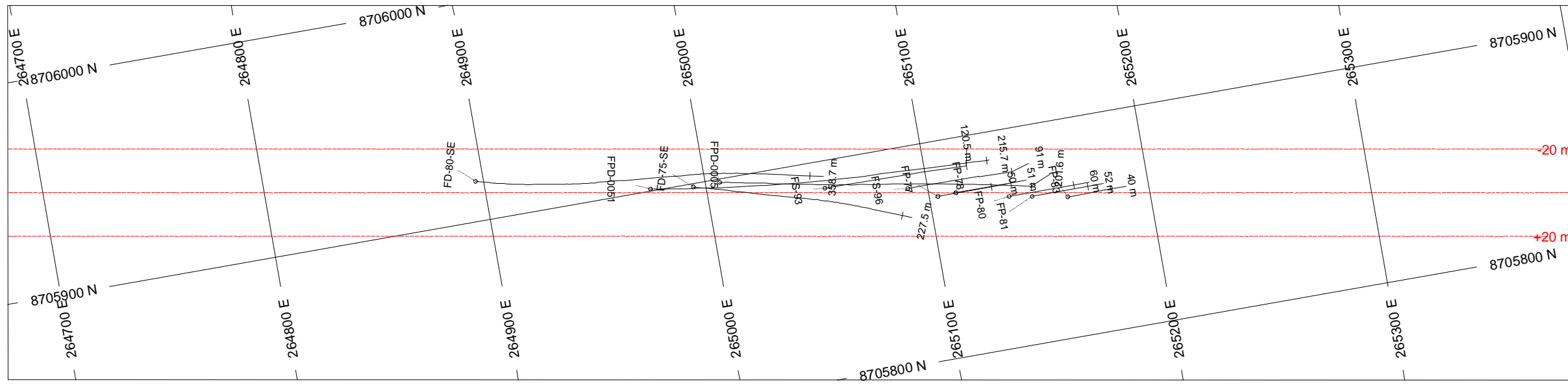
0 75 150 225 m



**ALMAS PROJECT
ALMAS
TOCANTINS STATE**

DRILLING AND
GOOGLE EARTH MAP
PAIOL TARGET

SAD69 - UTM 23S
SOURCE: RIO NOVO GOLD, ANEEL,
IBGE, ANA, CPRM
DATE: 2010/11/15

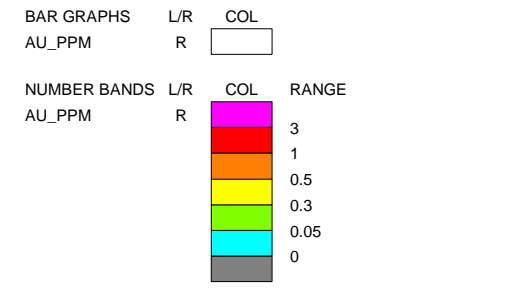
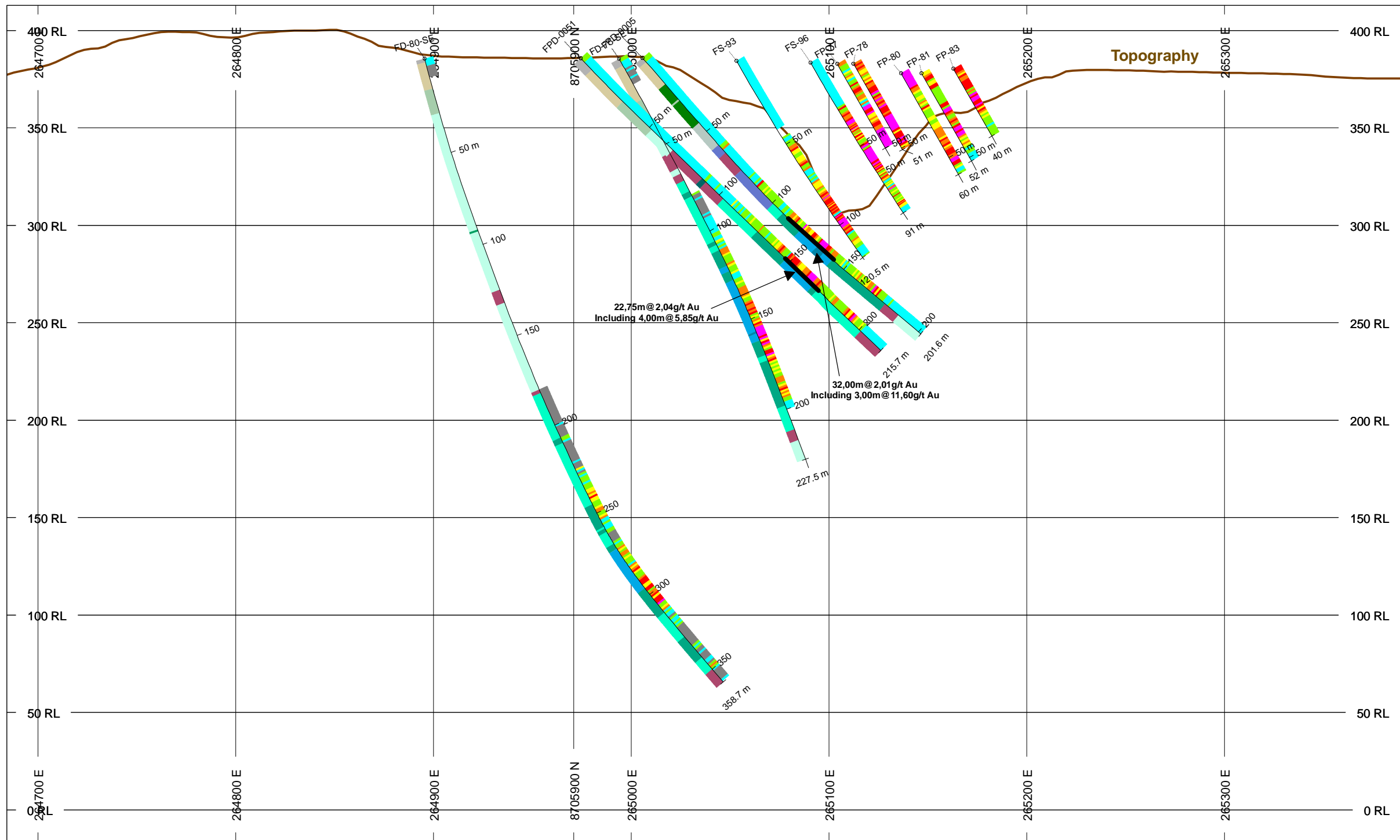


HOLES PLOTTED

TOTAL 11

| | | | |
|----------|----------|-------|----------|
| FD-75-SE | FD-80-SE | FP-77 | FP-78 |
| FP-80 | FP-81 | FP-83 | FPD-0005 |
| FPD-0051 | FS-93 | FS-96 | |

SECTION FPD-0005 PAIOL TARGET ALMAS PROJECT

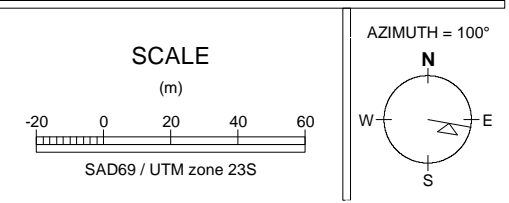


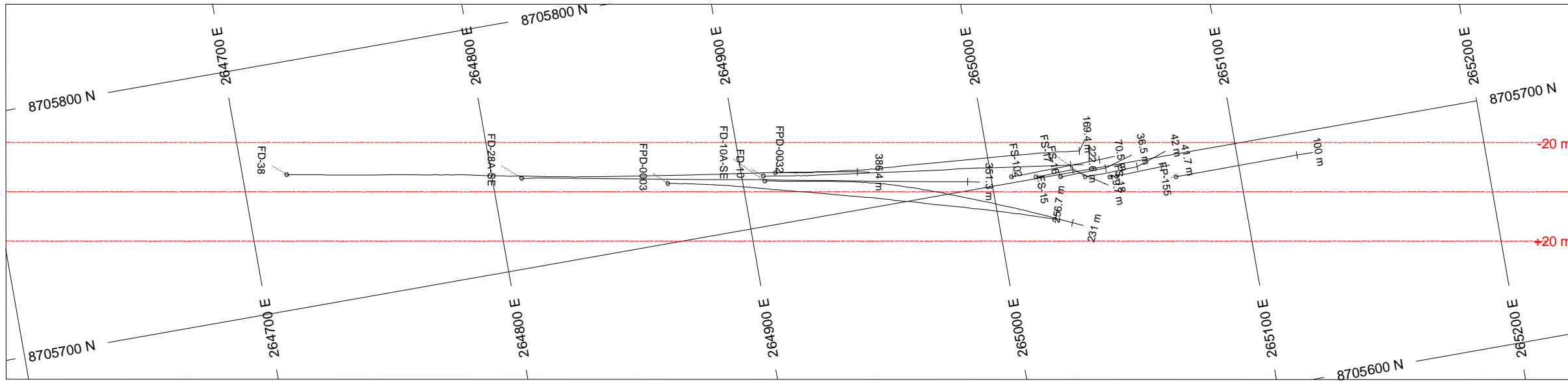
| ROCK CODES | PAT | LABEL | DESCRIPTION |
|------------|-------|-------|------------------------------------|
| Rock_Code | SO | SO | Soil |
| | SP | SP | Saprolite |
| | RI | RI | Weathered Rock |
| | CAAX | CAAX | Chlorite-Albite-Amphibole Schists |
| | SDCX | SDCX | Sericite-ankerite-chlorite Schists |
| | SCDX | SCDX | Sericite-chlorite-Ankerite Schists |
| | SDQX | SDQX | Sericite-Ankerite-Quartz Schists |
| | ADQX | ADQX | Albite-Ankerite-Quartz Schists |
| | MD | MD | Meta Dacite |
| | CCQX | CCQX | Calcite-Chlorite-Quartz Schist |
| | QCCX | QCCX | Quartz-carbonate-chlorite Schists |
| | CQCX | CQCX | Carbonate-Quartz-Chlorite Schist |
| | CX | CX | Chlorite Schist |
| | QSCXb | QSCXb | |

| POSTED TEXT | L/R | TEXT | ITEMS |
|---------------|-----|-------|-------|
| AU_PPM_Labels | R | ----- | All |
| Rock_Code | L | ----- | All |

SECTION SPECS:

| | | |
|------------------|----------|-----------|
| REF. PT. E, N | 265039 m | 8705888 m |
| EXTENTS | 720.3 m | 429.1 m |
| SECTION TOP, BOT | 412.9 m | -16.21 m |
| TOLERANCE +/- | 20 m | |





HOLES PLOTTED

TOTAL 12

| | | | |
|--------|-----------|-----------|--------|
| FD-10 | FD-10A-SE | FD-28A-SE | FD-38 |
| FP-155 | FPD-0003 | FPD-0032 | FS-102 |
| FS-15 | FS-16 | FS-17 | FS-18 |

**SECTION FPD-0032
PAILOS TARGET
ALMOS PROJECT**

BAR GRAPHS

| | |
|--------|-----|
| L/R | COL |
| AU_PPM | R |

NUMBER BANDS

| | | |
|--------|-----|-------|
| L/R | COL | RANGE |
| AU_PPM | R | 3 |
| | | 1 |
| | | 0.5 |
| | | 0.3 |
| | | 0.05 |
| | | 0 |

ROCK CODES

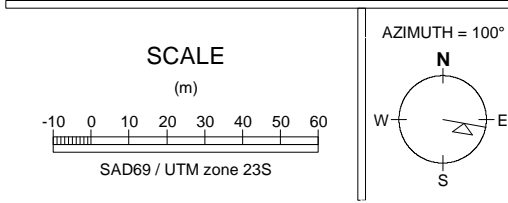
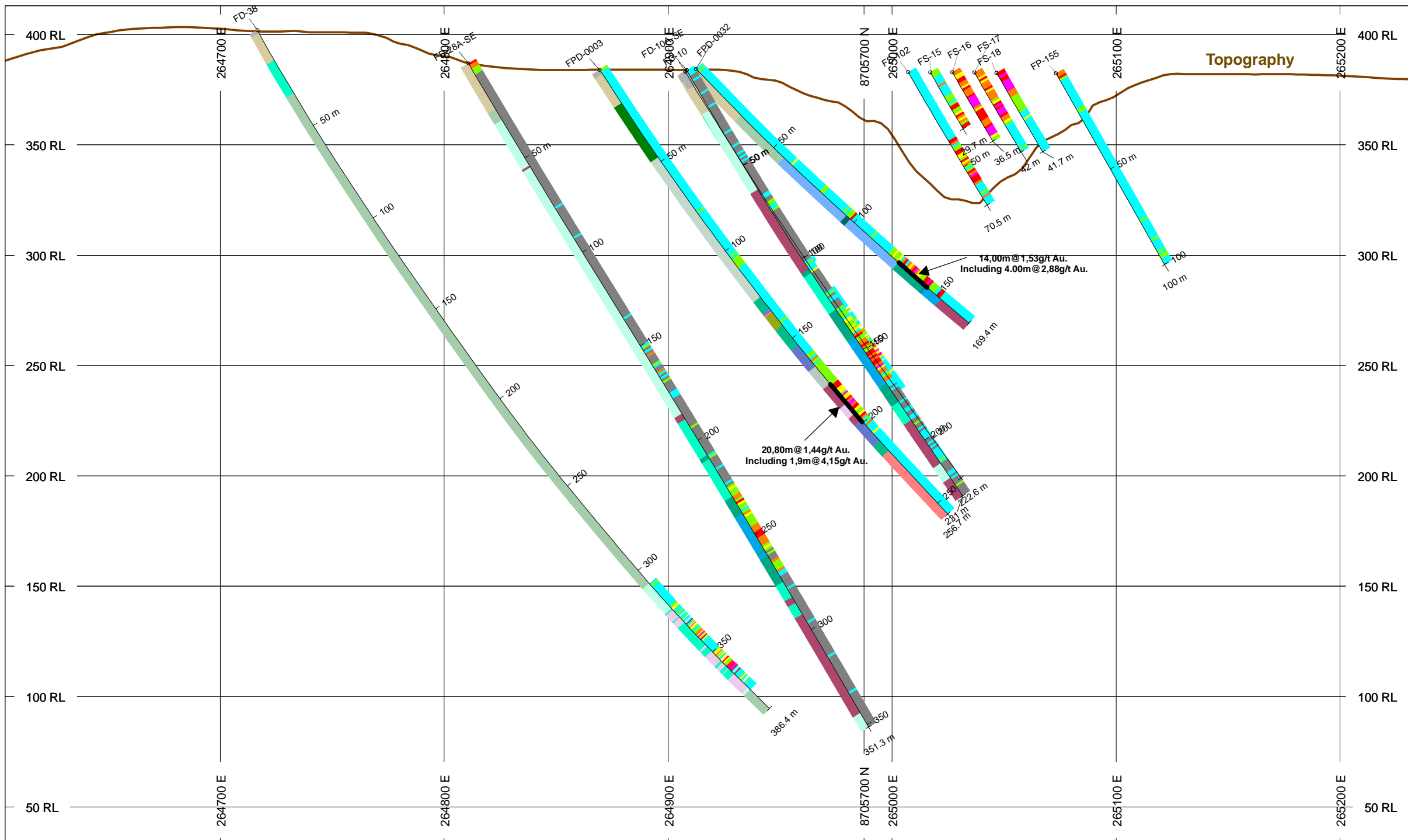
| Rock_Code | PAT | LABEL | DESCRIPTION |
|-----------|-----|-------|------------------------------------|
| | | SO | Soil |
| | | SP | Saprolite |
| | | RI | Weathered Rock |
| | | CAAX | Chlorite-Albite-Amphibole Schists |
| | | SDCX | Sericite-ankerite-chlorite Schists |
| | | SCDX | Sericite-chlorite-Ankerite Schists |
| | | SDQX | Sericite-Ankerite-Quartz Schists |
| | | ADQX | Albite-Ankerite-Quartz Schists |
| | | CCQX | Calcite-Chlorite-Quartz Schist |
| | | SQCX | Sericite-Quartz-Chlorite Schists |
| | | QCCX | Quartz-carbonate-chlorite Schists |
| | | CQCX | Carbonate-Quartz-Chlorite Schist |
| | | CCX | Carbonate-Chlorite Schist |
| | | HTM | Hydrothermalite |
| | | CQSX | Chlorite-Quartz-Sericite Schist |
| | | CX | Chlorite Schist |
| | | QCX | Quartz-Chlorite Schist |
| | | DCQX | Dolomite-Chlorite-Quartz Schist |
| | | CQX | Chlorite-Quartz Schist |
| | | RSI | Semi Weathered Rock |
| | | QSCXb | |
| | | RM | Mafic Rock |

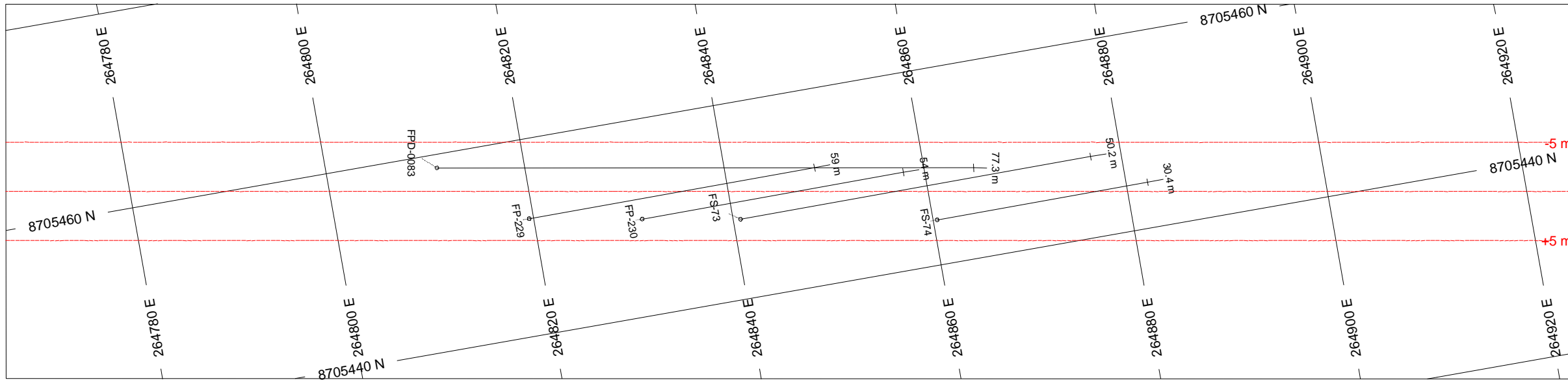
POSTED TEXT

| | | |
|---------------|------|-----------|
| L/R | TEXT | ITEMS |
| AU_PPM_Labels | R | ----- All |
| Rock_Code | L | ----- All |

SECTION SPECS:

| | | |
|------------------|----------|-----------|
| REF. PT. E, N | 264919 m | 8705712 m |
| EXTENTS | 640.2 m | 381.4 m |
| SECTION TOP, BOT | 413.1 m | 31.7 m |
| TOLERANCE +/- | 20 m | |



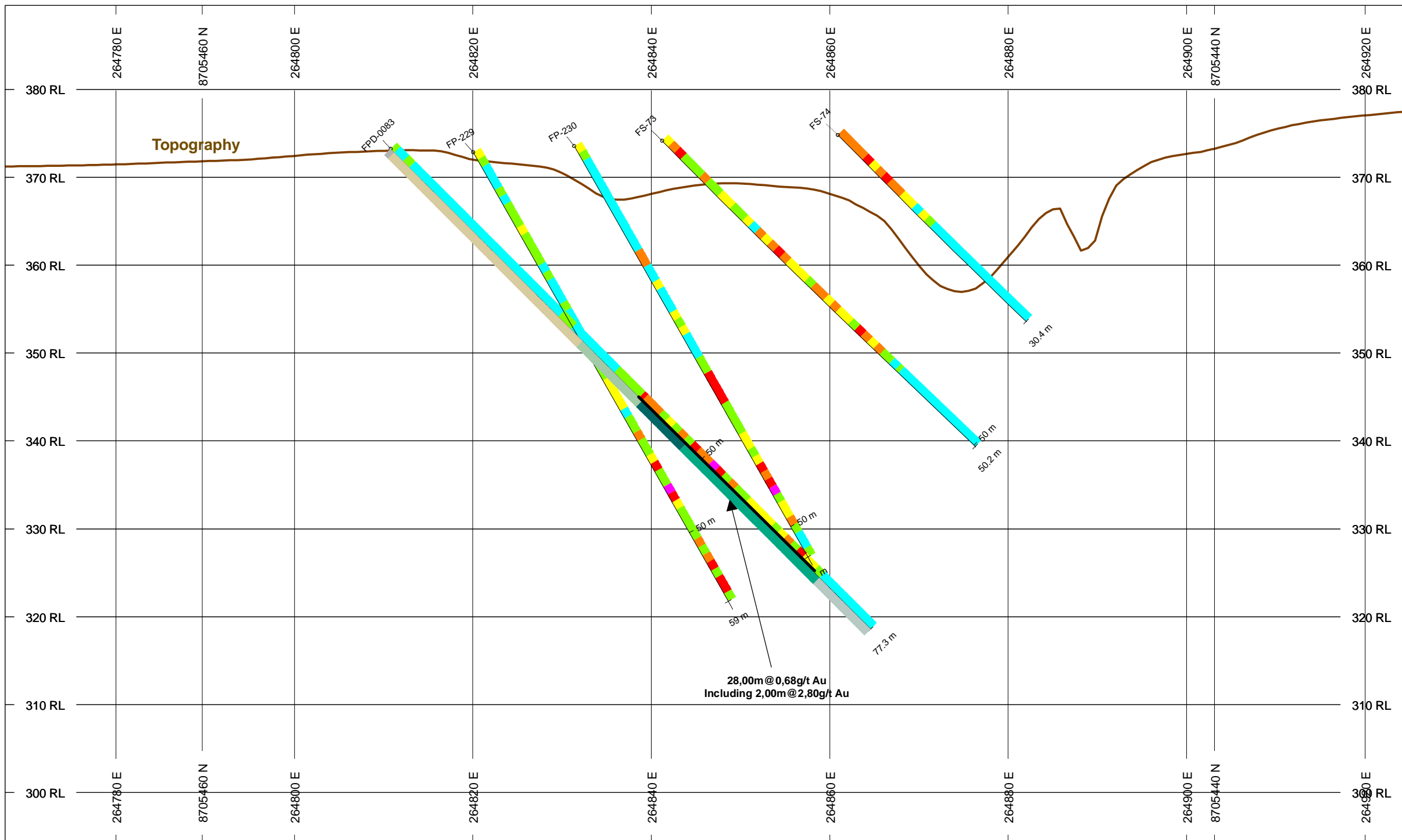


HOLES PLOTTED

TOTAL 5

FP-229 FP-230 FPD-0083 FS-73
 FS-74

**SECTION FPD-0083
 PAIOL TARGET
 ALMAS PROJECT**



| BAR GRAPHS | L/R | COL |
|------------|-----|-----|
| AU_PPM | R | |

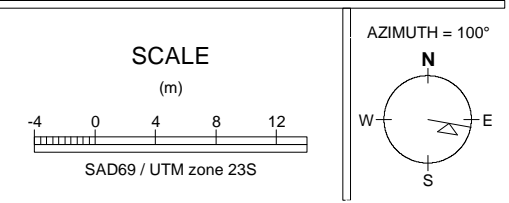
| NUMBER BANDS | L/R | COL | RANGE |
|--------------|-----|-----|-------|
| AU_PPM | R | | 3 |
| | | | 1 |
| | | | 0.5 |
| | | | 0.3 |
| | | | 0.05 |
| | | | 0 |

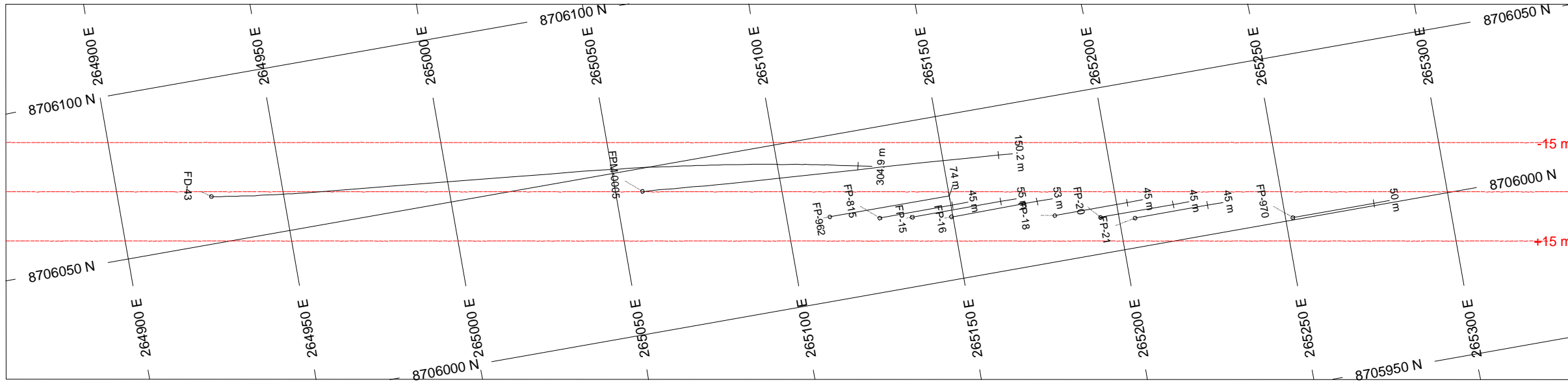
| ROCK CODES | PAT | LABEL | DESCRIPTION |
|------------|-------|-------|------------------------------------|
| Rock_Code | SO | SO | Soil |
| | SP | SP | Saprolite |
| | SCDX | SCDX | Sericite-chlorite-Ankerite Schists |
| | CQCX | CQCX | Carbonate-Quartz-Chlorite Schist |
| | RSI | RSI | Semi Weathered Rock |
| | QSCXb | QSCXb | |

| POSTED TEXT | L/R | TEXT | ITEMS |
|---------------|-----|-------|-------|
| AU_PPM_Labels | R | ----- | All |
| Rock_Code | L | ----- | All |

SECTION SPECS:

| | | |
|------------------|----------|-----------|
| REF. PT. E, N | 264846 m | 8705450 m |
| EXTENTS | 160.1 m | 95.36 m |
| SECTION TOP, BOT | 389.5 m | 294.2 m |
| TOLERANCE +/- | 5 m | |



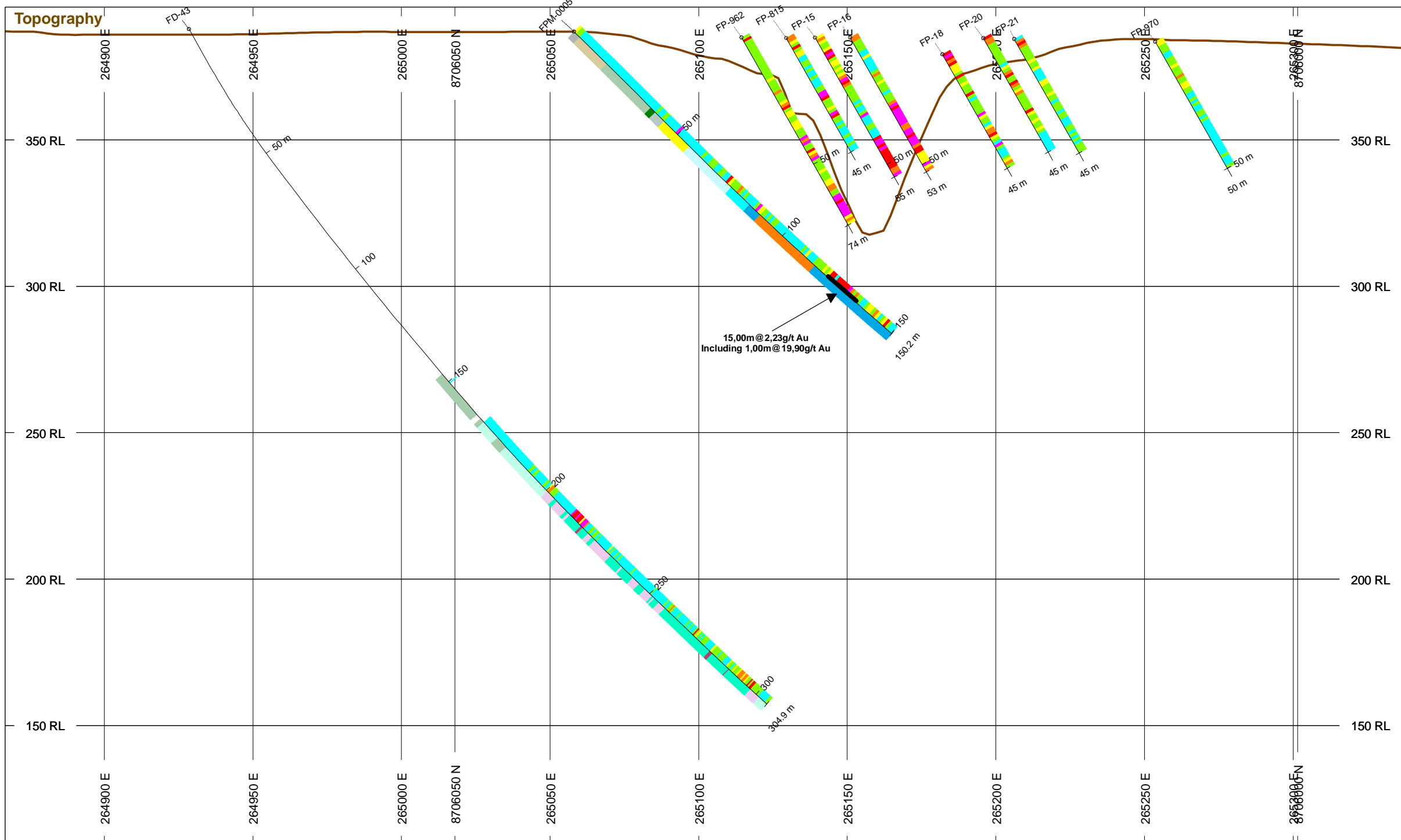


HOLES PLOTTED

TOTAL 10

| | | | |
|--------|----------|--------|--------|
| FD-43 | FP-15 | FP-16 | FP-18 |
| FP-20 | FP-21 | FP-815 | FP-962 |
| FP-970 | FPM-0005 | | |

**SECTION FPM-0005
PAIOL TARGET
ALMAS PROJECT**



BAR GRAPHS

| | | |
|--------|-----|-----|
| AU_PPM | L/R | COL |
| | R | |

NUMBER BANDS

| | | | |
|--------|-----|-----|-----------------------------------|
| AU_PPM | L/R | COL | RANGE |
| | R | | 3 1 0.5 0.3 0.05 0 |

ROCK CODES

| Rock_Code | PAT | LABEL | DESCRIPTION |
|-----------|-----|-------|------------------------------------|
| | | SO | Soil |
| | | SP | Saprolite |
| | | RI | Weathered Rock |
| | | CAAX | Chlorite-Albite-Amphibole Schists |
| | | SDCX | Sericite-ankerite-chlorite Schists |
| | | SDQX | Sericite-Ankerite-Quartz Schists |
| | | CCQX | Calcite-Chlorite-Quartz Schist |
| | | CQCX | Carbonate-Quartz-Chlorite Schist |
| | | QSCX | Quartz-Sericite-Chlorite Schist |
| | | CX | Chlorite Schist |
| | | QSCAX | Quartz-Sericite-Carbonate Schist |
| | | DCQX | Dolomite-Chlorite-Quartz Schist |
| | | SCX | Sericite-Chlorite Schist |
| | | SX | Sericite Schist |

POSTED TEXT

| | | | |
|---------------|-----|-------|-------|
| AU_PPM_Labels | L/R | TEXT | ITEMS |
| | R | ----- | All |
| Rock_Code | L | ----- | All |

SECTION SPECS:

| | | |
|------------------|----------|-----------|
| REF. PT. E, N | 265103 m | 8706035 m |
| EXTENTS | 480.2 m | 286.1 m |
| SECTION TOP, BOT | 395.3 m | 109.2 m |
| TOLERANCE +/- | 15 m | |

