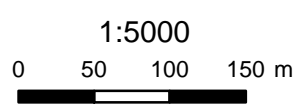


- Drilling
- Type/Status
- Extension/Executed
 - Extension/In Progress
 - Extension/Programmed
 - ◆ In Fill/Executed
 - ◆ In Fill/In Progress
 - ◆ In Fill/Programmed
 - Metal

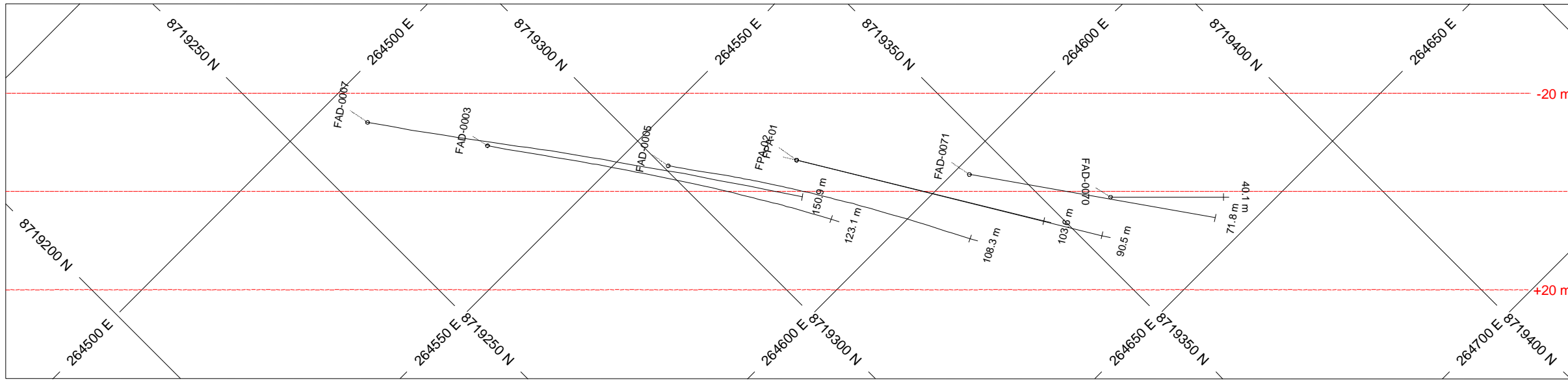
- Drilling
- MSE
 - VALE
- Section



ALMAS PROJECT
ALMAS
TOCANTINS STATE

DRILLING AND
GOOGLE EARTH MAP
ARROZ TARGET

SAD69 - UTM 23S
SOURCE: RIO NOVO GOLD, ANEEL,
IBGE, ANA, CPRM
DATE: 2010/11/15

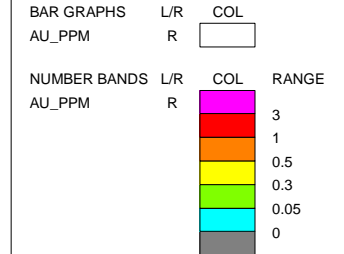


HOLES PLOTTED

TOTAL 7

FAD-0003 FAD-0005 FAD-0007 FAD-0070
 FAD-0071 FPA-01 FPA-02

**SECTION FAD-0070
 ARROZ TARGET
 ALMAS PROJECT**

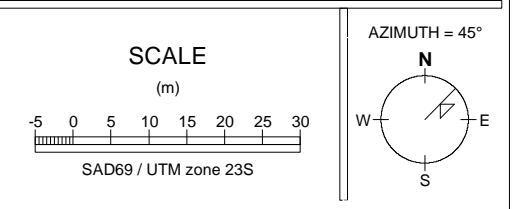
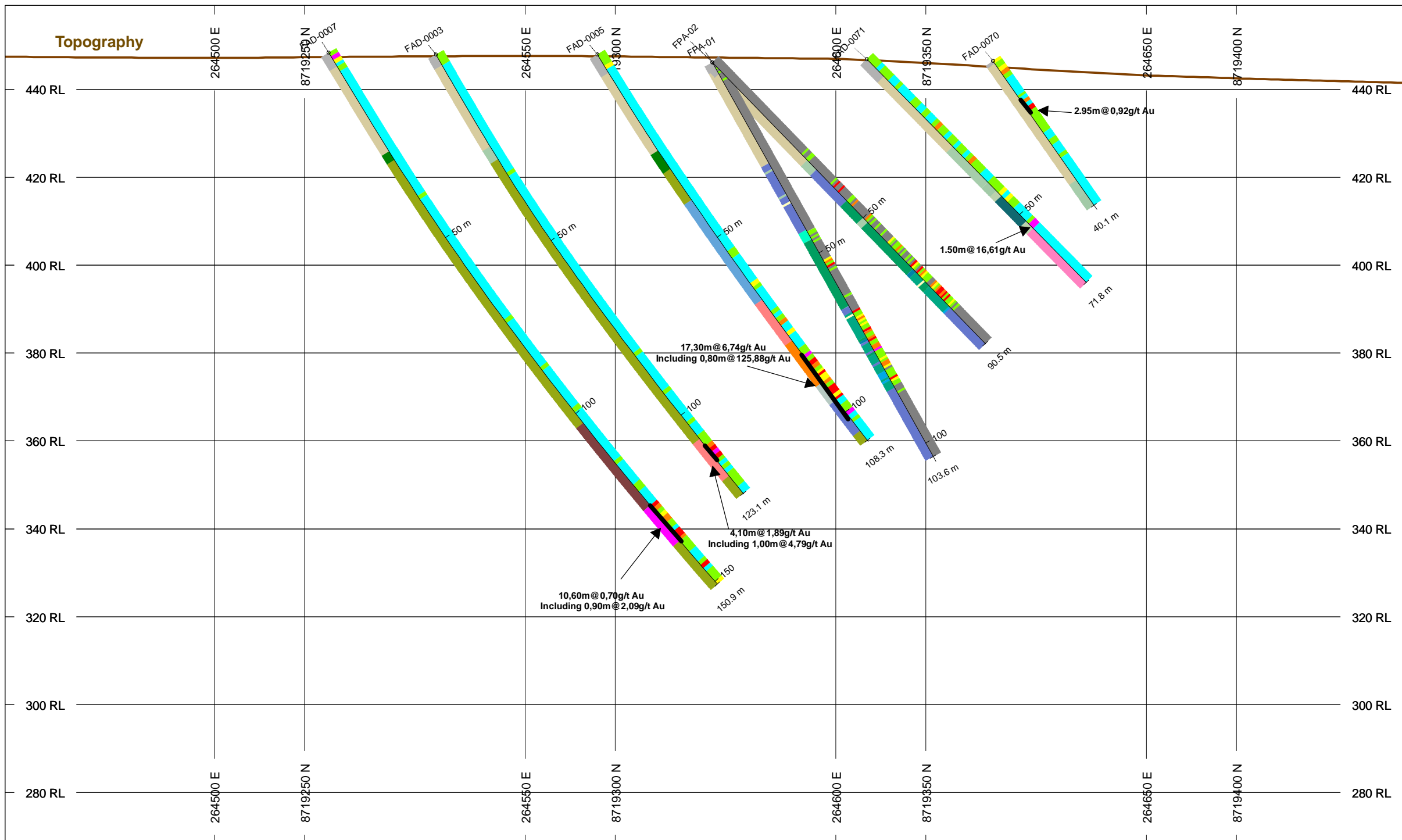


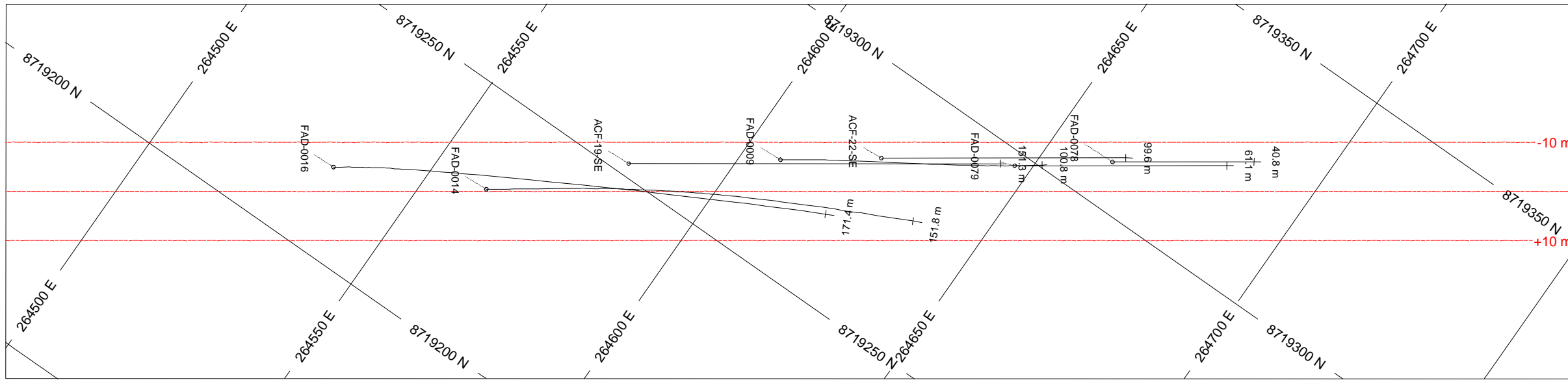
ROCK CODES	PAT	LABEL	DESCRIPTION
Rock_Code	SO	Soil	
	SP	Saprolite	
	RI	Weathered Rock	
	SDCX	Sericite-ankerite-chlorite Schists	
	SCDX	Sericite-chlorite-Ankerite Schists	
	SDQX	Sericite-Ankerite-Quartz Schists	
	ADQX	Albite-Ankerite-Quartz Schists	
	MD	Meta Dacite	
	VQTZ	Quartz Vein	
	QCCX	Quartz-carbonate-chlorite Schists	
	CQCX	Carbonate-Quartz-Chlorite Schist	
	CCX	Carbonate-Chlorite Schist	
	HTM	Hydrothermalite	
	CQSX	Chlorite-Quartz-Sericite Schist	
	SCCAX	Sericite-Chlorite-Carbonate Schist	
	CX	Chlorite Schist	
	QCASX	Quartz-Carbonate-Sericite Schist	
	CQSCX	Chlorite-Quartz-Sericite-Carbonate Schist	
	QSCAX	Quartz-Sericite-Carbonate Schist	
	RSI	Semi Weathered Rock	
	CQSXp	Chlorite-Quartz-Sericite Schist Proximal	
	QSN	Quartz-Sericite Schist Nucleus	

POSTED TEXT	L/R	TEXT	ITEMS
AU_PPM_Labels	R	All
Rock_Code	L	All

SECTION SPECS:

REF. PT. E, N	264580 m	8719315 m
EXTENTS	320.1 m	190.7 m
SECTION TOP, BOT	459.1 m	268.3 m
TOLERANCE +/-	20 m	



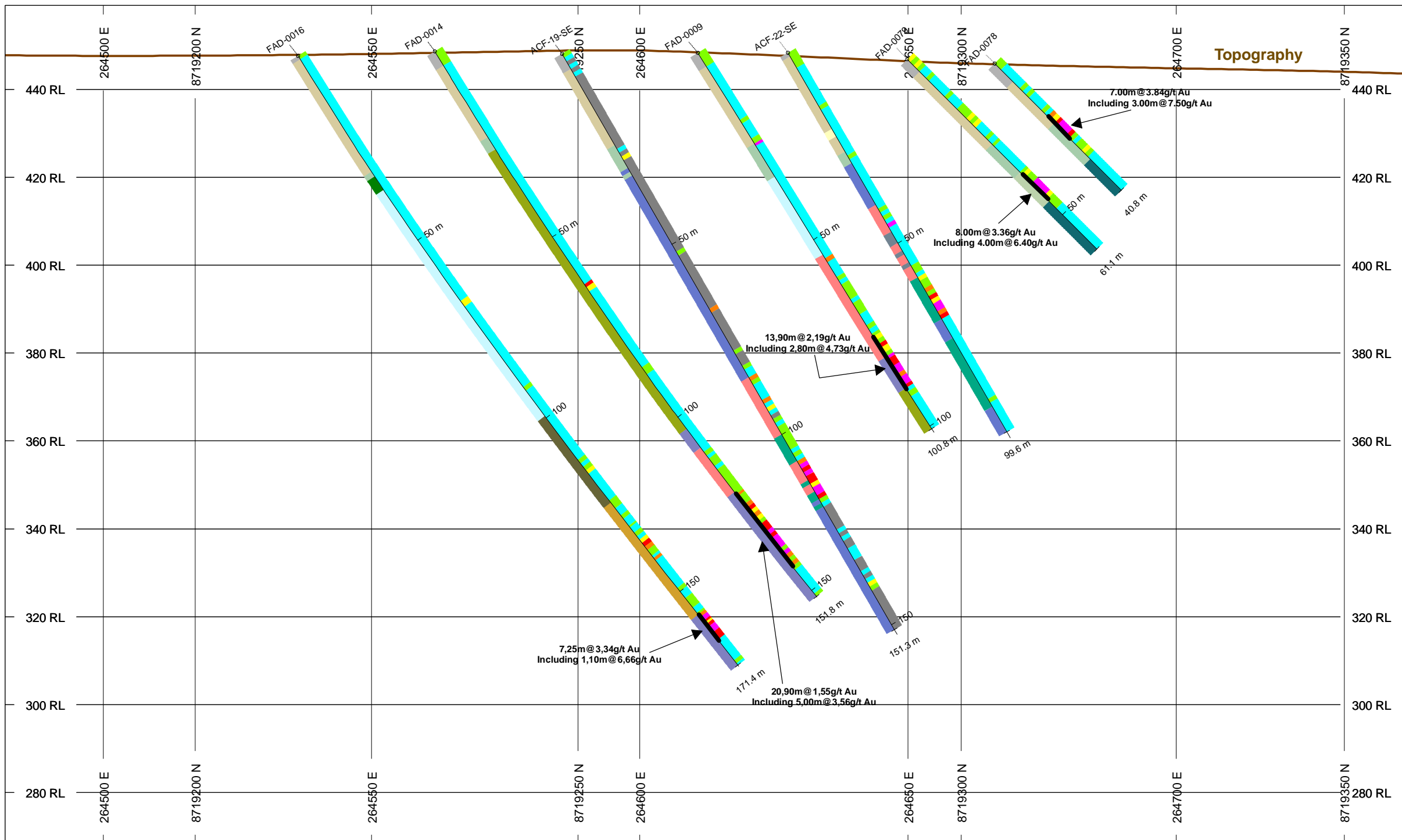


HOLES PLOTTED

TOTAL 7

ACF-19-SE ACF-22-SE FAD-0009 FAD-0014
 FAD-0016 FAD-0078 FAD-0079

**SECTION FAD-0078
 ARROZ TARGET
 ALMAS PROJECT**



BAR GRAPHS L/R COL

AU_PPM R

NUMBER BANDS L/R COL RANGE

AU_PPM R 3
 1
 0.5
 0.3
 0.05
 0

ROCK CODES PAT LABEL DESCRIPTION

Rock_Code	PAT	LABEL	DESCRIPTION
	SO	SO	Soil
	SP	SP	Saprolite
	RI	RI	Weathered Rock
	SCDX	SCDX	Sericite-chlorite-Ankerite Schists
	VQTZ	VQTZ	Quartz Vein
	BQZ	BQZ	Quartz Breccia
	QCCX	QCCX	Quartz-carbonate-chlorite Schists
	CCX	CCX	Carbonate-Chlorite Schist
	QSX	QSX	Quartz-Sericite Schist
	HTM	HTM	Hydrothermalite
	CX	CX	Chlorite Schist
	CCSX	CCSX	Carbonate-Chlorite-Sericite Schist
	Quartz-Feldspar Schist	Quartz-Feldspar Schist	Quartz-feldspar Schist
	SCX	SCX	Sericite-Chlorite Schist
	CSX	CSX	Chlorite-Sericite Schist
	CQSXp	CQSXp	Chlorite-Quartz-Sericite Schist
	QSXn	QSXn	Proximal Quartz-Sericite Schist
			Nucleus

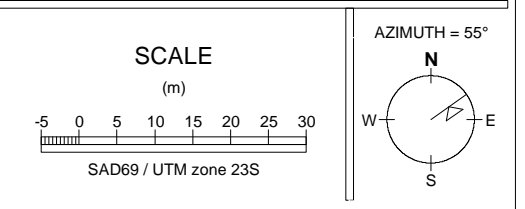
POSTED TEXT L/R TEXT ITEMS

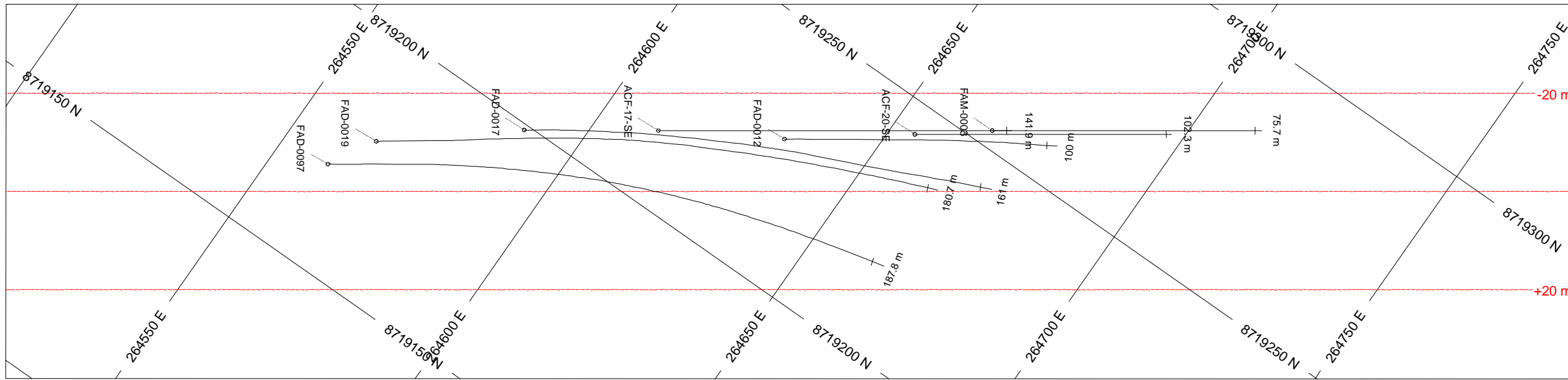
AU_PPM_Labels R ----- All

Rock_Code L ----- All

SECTION SPECS:

REF. PT. E, N	264613 m	8719267 m
EXTENTS	320.1 m	190.7 m
SECTION TOP, BOT	459.1 m	268.3 m
TOLERANCE +/-	10 m	



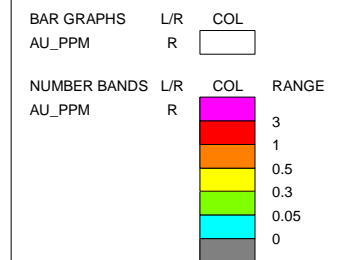


HOLES PLOTTED

TOTAL 7

ACF-17-SE ACF-20-SE FAD-0012 FAD-0017
 FAD-0019 FAD-0097 FAM-0003

**SECTION FAM-0003
 ARROZ TARGET
 ALMAS PROJECT**



ROCK CODES	PAT	LABEL	DESCRIPTION
Rock_Code	SO	Soil	
	SP	Saprolite	
	RI	Weathered Rock	
	SCDX	Sericite-chlorite-Ankerite Schists	
	SDQX	Sericite-Ankerite-Quartz Schists	
	SQCX	Sericite-Quartz-Chlorite Schists	
	BQZ	Quartz Breccia	
	QCCX	Quartz-carbonate-chlorite Schists	
	CASQX	Carbonate-Sericite-Quartz Schist	
	QX	Quartz Schist	
	QSCX	Quartz-Sericite-Chlorite Schist	
	CCX	Carbonate-Chlorite Schist	
	QSX	Quartz-Sericite Schist	
	CQSX	Chlorite-Quartz-Sericite Schist	
	CCSX	Carbonate-Chlorite-Sericite Schist	
	QCASX	Chlorite-Quartz-Sericite Carbonate-Sericite Schist	
	CQSCX	Chlorite-Quartz-Sericite-Carbonate Schist	
	QCX	Quartz-Chlorite Schist	
	SCX	Sericite-Chlorite Schist	
	RSI	Semi Weathered Rock	
	CQSXp	Chlorite-Quartz-Sericite Schist Proximal	
	QSXn	Quartz-Sericite Schist Nucleus	

POSTED TEXT	L/R	TEXT	ITEMS
AU_PPM_Labels	R	-----	All
Rock_Code	L	-----	All

SECTION SPECS:

REF. PT. E, N	264641 m	8719220 m
EXTENTS	320.1 m	190.7 m
SECTION TOP, BOT	459.1 m	268.3 m
TOLERANCE +/-	20 m	

