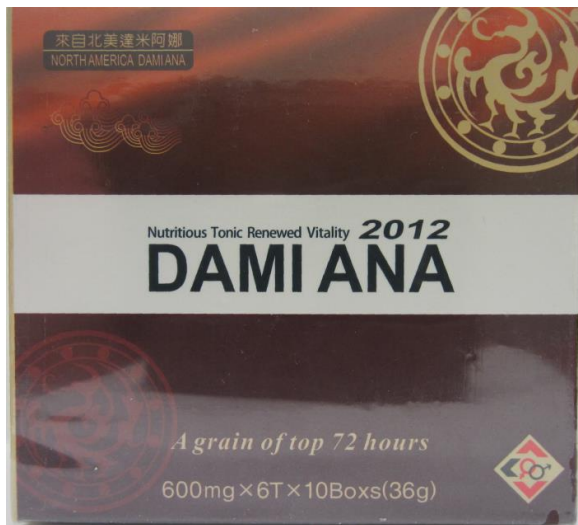


North America Dami Ana 600mg



South America Maca 600mg



Ashwagandha 600mg



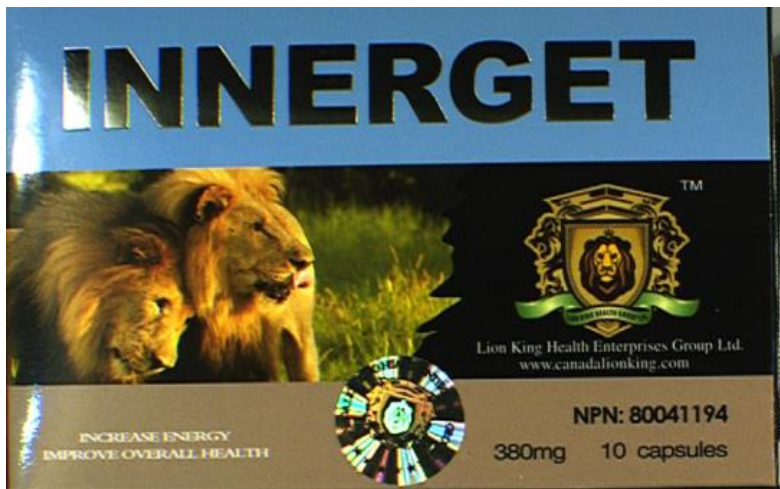
Optimusman 350mg



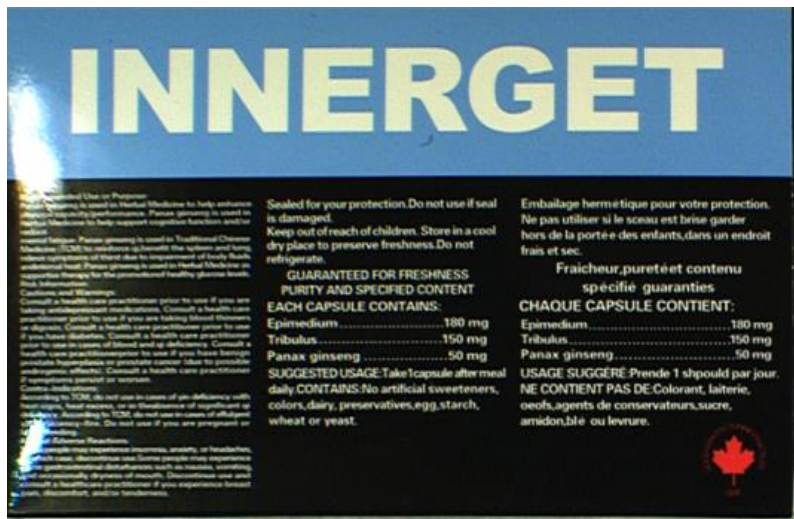
Superman 350mg



Innerget Instant Erection (NPN#80041194) (devant de l'emballage)



Innerget Instant Erection (NPN#80041194) (arrière de l'emballage)



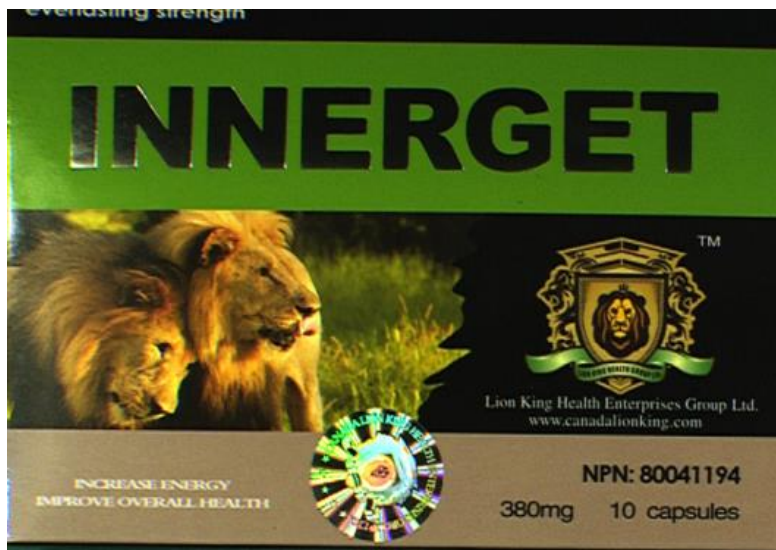
Innerget Prolonged Performance (NPN#80041194) (devant de l'emballage)



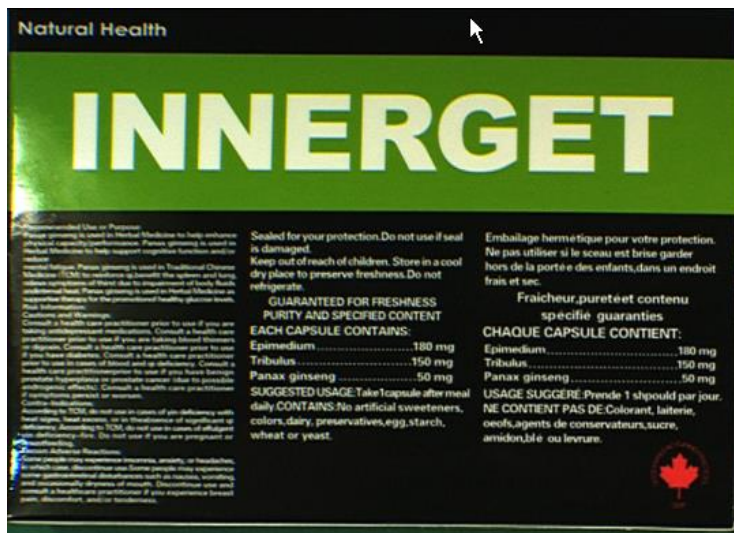
Innerget Prolonged Performance (NPN#80041194) (arrière de l'emballage)



Innerget Everlasting Strength (NPN#80041194) (devant de l'emballage)



Innerget Everlasting Strength (NPN#80041194) (arriere de l'emballage)

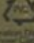


Megaton 2080 (devant de l'emballage)



Megaton 2080 (arriere de l'emballage)

Item: Megaton 2080 - Food Type: Health Food - Red Ginseng Combined Product - Professional Health Food Manufacture Approval No.: 2011-A0008  
 Quantity: 600mg x 87 - Ingredients: Red Ginseng Extract 10.00% (Ginsenoside Content over 70%), Plant Nature Extract 4.10%, Maltose Mixture Powder 4.50%, Tribulus 5.50%, Royal Jelly Powder 5.00%, Crystal Cellulose, Maltodextrin, Lactose Monohydrate Powder, L-Phenylalanine, Oxidation Magnesium, Vitamin C (L-Ascorbic acid), Sweet Acid Magnesium, Vitamin E Mixture (DHA), Nicotinic Acid Amide, Calcium Zinc Octanoate 10%, Sulfuric Acid Manganese, Carbon Dioxide Titanium, Manganese Color Mixture, Glyceryl Fatty Acid Ester, Hydroxypropyl methylcellulose  
 Inner Coating: PVC + Al, Foil - Encouraged Dosage and Intake Method: One per day, one tablet at a time, with water - Keeping Notes: Keep it in a cool area, not in the hot and humid places, avoiding the direct rays of the sun  
 Intake Notes: Our products can respond in a different way depending upon the conditions of the person. Those who have an allergy are required to contact our consumer consulting office before intake. The products beyond the period of circulation must not be taken.  
 Return and Exchange: Any products damaged during the period of delivery shall be exchanged in the store you bought them.  
 Manufacturer: **Bong A Eodies** / Jersu High-tech Science Complex, 320-1, Dunsan-ro, Songjong-gu, Yangju-si, Jeonbuk  
 Period of Circulation: 24 months  
 Our products can be exchanged or compensated by the standards of consumer damage compensation announced by Ministry of Finance and Economy.  
 They are not medicine for prevention and treatment of diseases.

  
Ministry of Environment  
Inner Coating

**Nutrition - Function**

Storage of one time: 1 tablet (0.6g)

Component	Content	% Nutrition Standards
Calorie	1.200mg (1)	
Carbohydrate	11.00%	
Protein	1.00%	
Fat	1.20%	
Moisture	8.200mg (1)	

\*Other ingredients or trace ingredients  
Red Ginseng ingredients: 10.00%  
Nutrition Standards: The standards by the nutrition standards of a day

01092016  
81809188763138