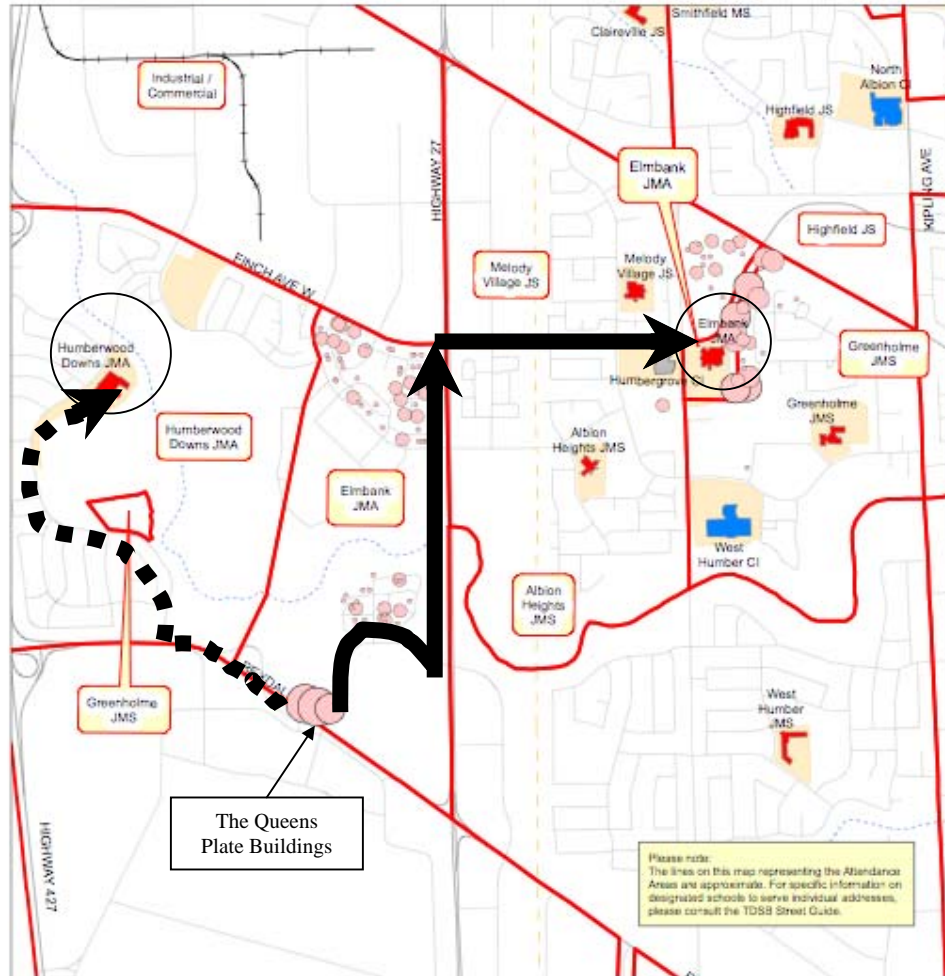




Locations of Elmbank Junior Students and Junior Attendance Area October 2008



0 0.25 0.5 1 1.5 2 Kilometers

Produced by:
Planning Division, TDSSB
June 2009
Source:
Base Map - Land Information Toronto
Facility Data - Planning Division, TDSSB
L:\GISData\project\2008-2009
scattergram\JuniorStudentsAnalysis.mxd



Legend:		Number of Student(s)
Elementary School	Junior Attendance Area	1
Secondary School	Road	2 - 3
Other Facility	Railway	4 - 5
Site	Utilityline	6 - 8
	Waterway	9 - 26

On this map, the Queen's Plate buildings are represented as three overlapping circles on Rexdale Blvd. Humberwood Downs JMA is a walk to the west around a park from these buildings (see dotted black line), while Elmbank JMA involves walking north up Highway 27, across Humber College Boulevard and then across Highway 27 and east along Finch Ave. – all very wide and dangerous roads (see solid black line).