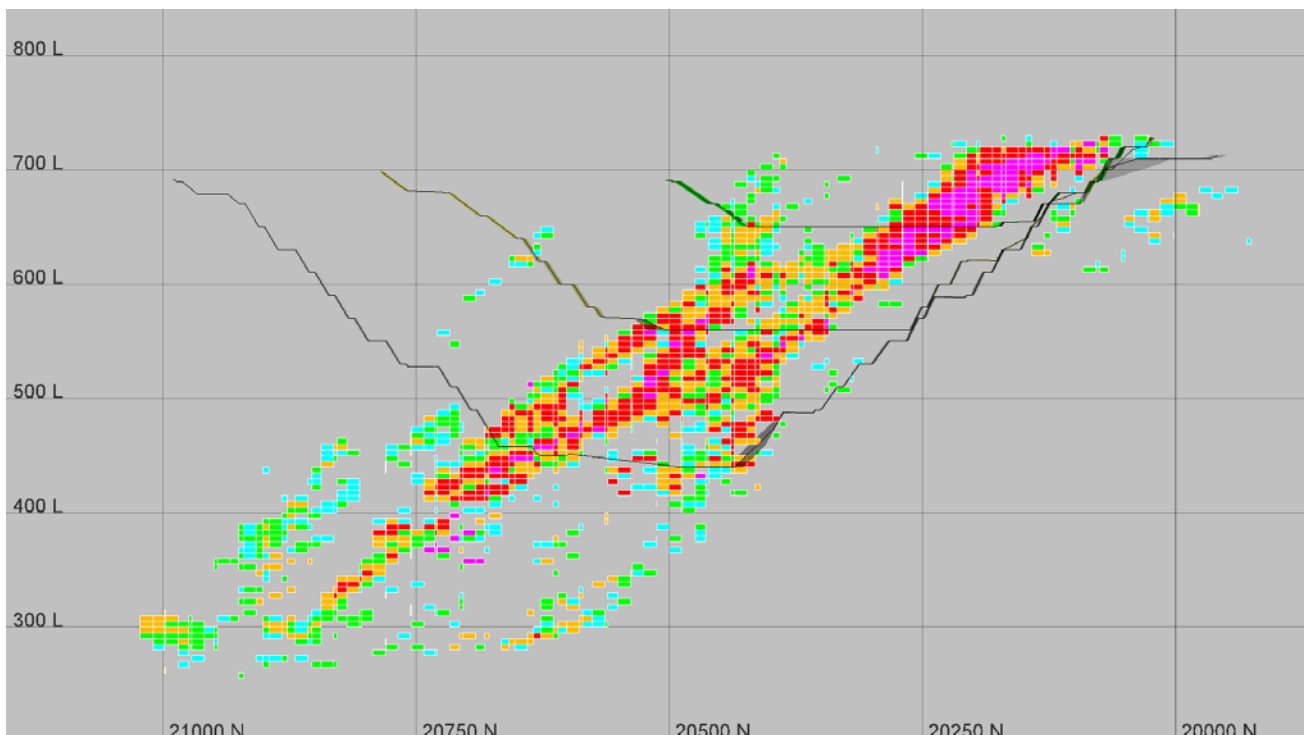


***New Sabodala reserve pit design in red, October 2007 design in gray, mineralisation envelope in gold.
Inset view is to the east***



***Development sequence showing Phases 1, 2 and 3 in long section looking east.
The mineralisation at Sabodala remains open to depth towards the northwest, down-dip to the west and southeast, and towards the east in the flat structure. Outside of the ultimate pit, 2.5 million tonnes of potential underground mineable ore exists above a 3.0g/t cut-off grade with an average grade of 4.4g/t***