



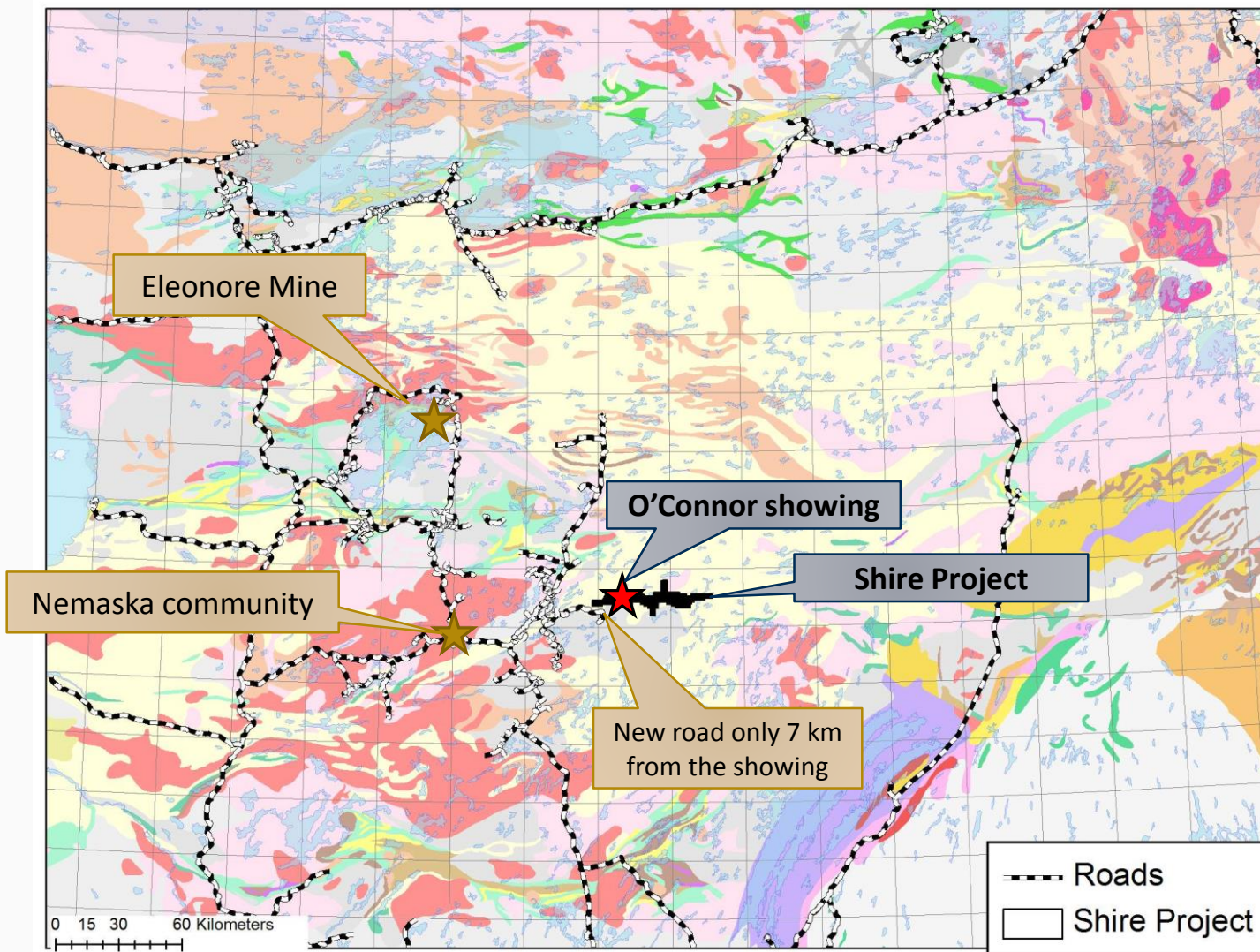
## Shire Zn Project



THE NEXT MAJOR DISCOVERER IN QUEBEC

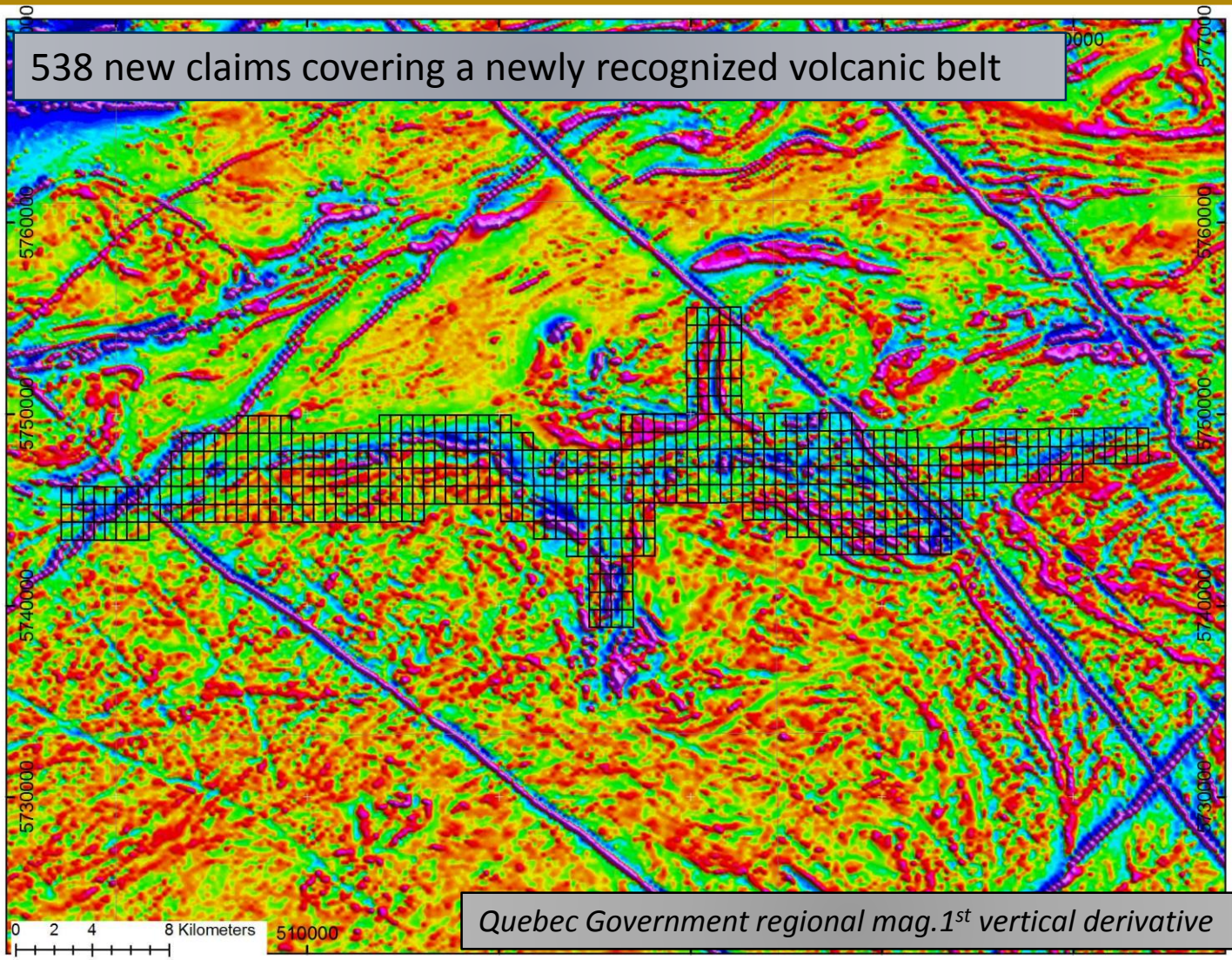


# Shire Project Location



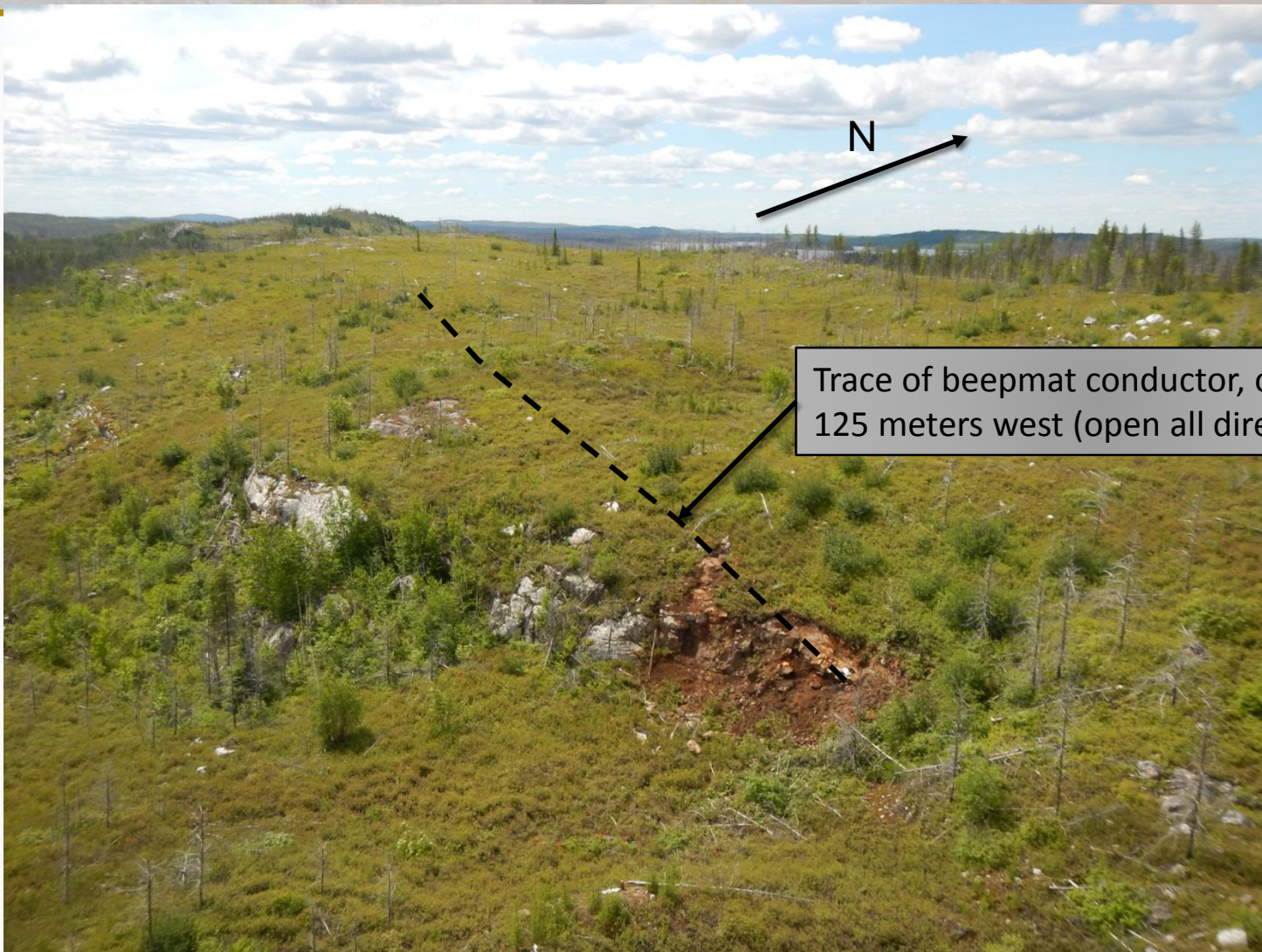


# Shire Project Claims + Mag DV





# O'Connor Showing – View from the air

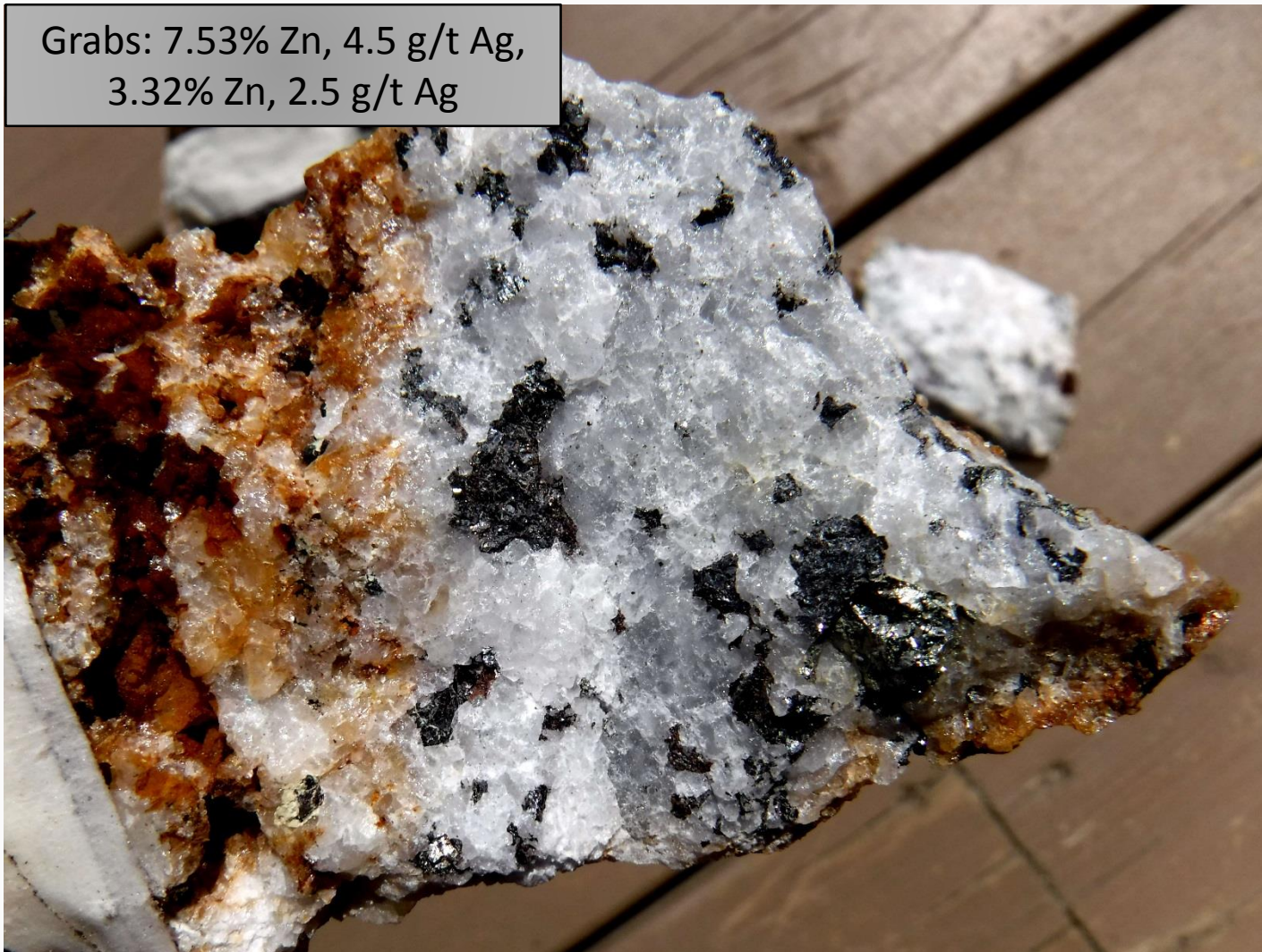


Trace of beepmat conductor, over  
125 meters west (open all directions).



# O'Connor Showing – Sphalerite-Quartz exhalite

Grabs: 7.53% Zn, 4.5 g/t Ag,  
3.32% Zn, 2.5 g/t Ag





# O'Connor Showing – Massive sphalerite band in pyrite-rich massive sulfide

Grab: 2.79% Zn, 4.4 g/t Ag

Pyrite

Sphalerite

