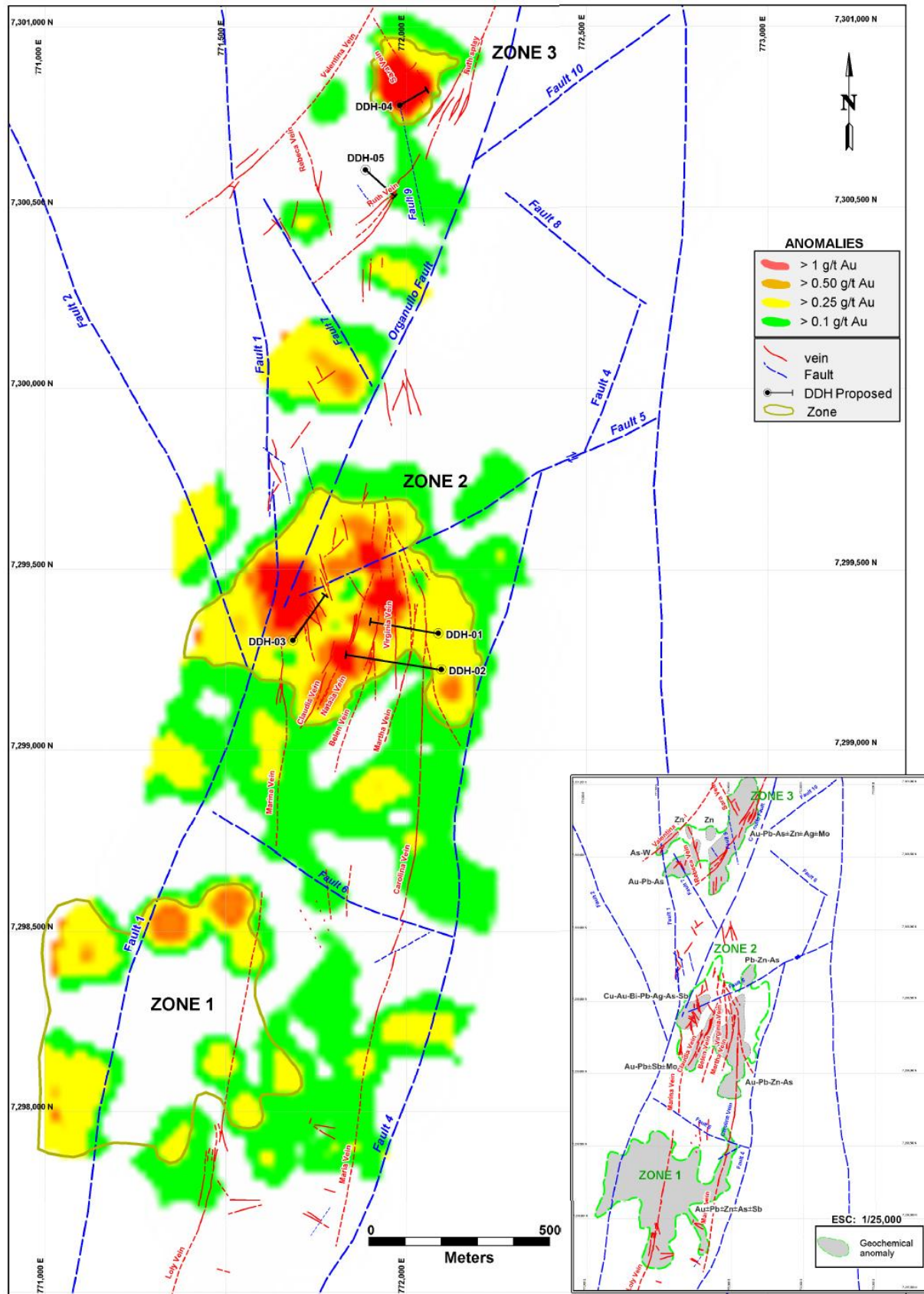
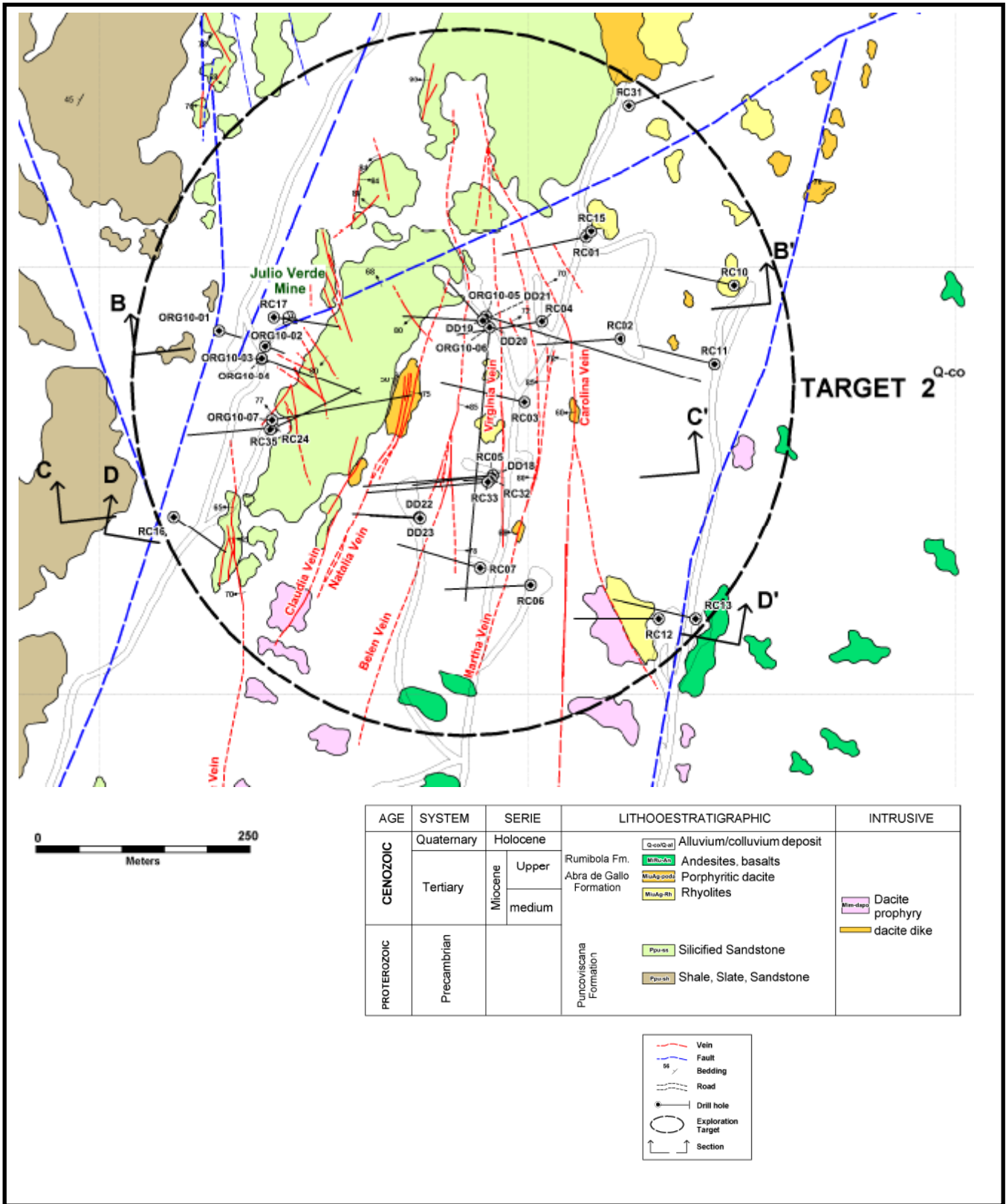


Map 1: Morpho-structures from northwest Argentina. The suture zone of Puncoviscana is shown, which separates the Arequipa-Antofalla and Pampia terranes (modified from Götze and Krause 2002, Bahlburg & Hervé, 1997).



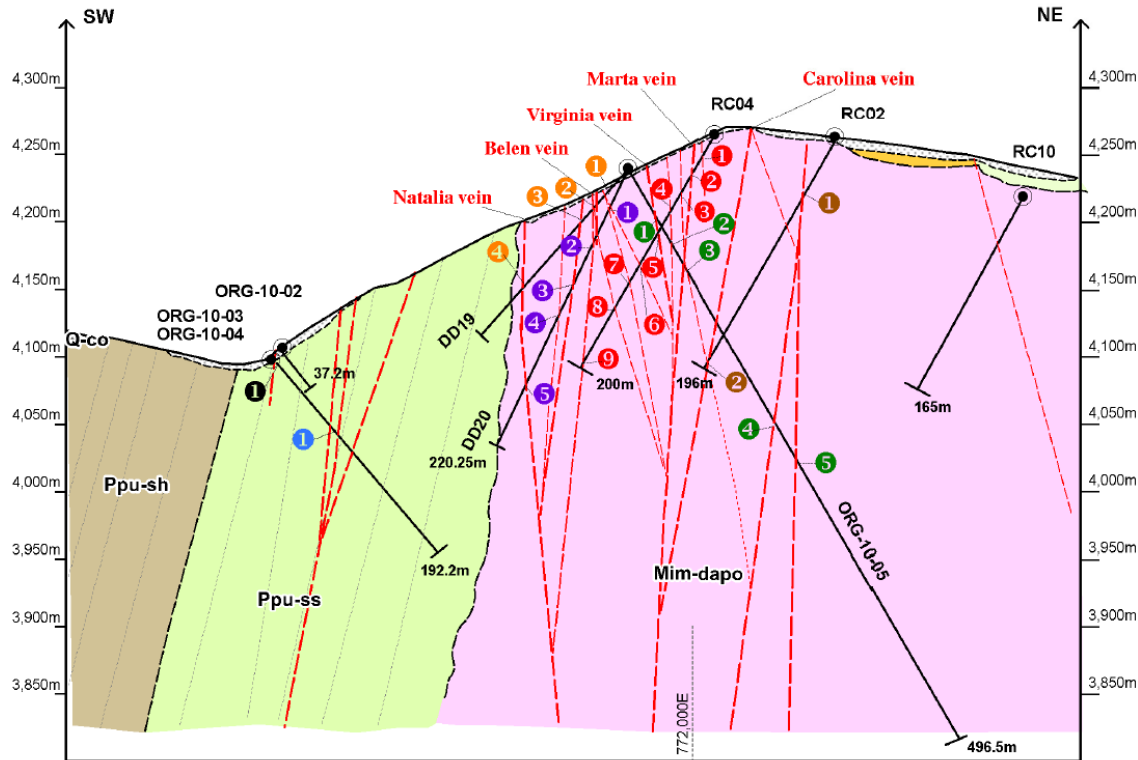
Map 2: Target Zones identified by Artha. Map shows gold in surface geochemistry anomalies and initial proposed reconnaissance drill holes.



Map 3A: Target 2 Zone identified by Artha, showing geology, mineralised veins and historical drill hole collars. See map 3B for Section B B'.

DRILLING INTERCEPTS

SECTION B-B'



HOLE	From(m)	To(m)	Width (m)	Au g/t	Ag g/t	Cu_ppm	Pb_ppm	Zn_ppm
DD 19	1	19	21	2	1.83	0.9	-	-
	2	38.45	48.2	9.75	2.9	1.34	-	-
	3	59.3	61.3	2	1.24	2.8	-	-
	4	108.65	110.7	2	0.98	2.9	-	-
DD 20	1	20.75	22.00	1.25	2.13	4.4	-	-
	2	52.50	54.30	1.8	2.08	3.3	-	-
	3	107	109	2	0.46	2.1	-	-
	4	129.00	131.00	2	0.44	1.1	-	-
	5	171.00	175.00	4	0.89	3.9	-	-
ORG-10-03	1	6.5	7.3	0.8	1.05	10.9	124	506.00
ORG-10-04	1	88.80	91.30	2.5	0.54	2.8	236	307
ORG-10-05	1	54.00	55.40	1.4	2.16	0.7	24	199
	2	59.90	61.20	1.3	6.74	3	63	394
		61.20	63.10	1.9	0.73	0.7	18	287.00
	3	80.30	82.10	1.8	0.62	3.1	30	535
	4	208.75	219.15	7.5	1.71	3.45	534.07	447.64
	251.60	256.00	4.4	2.00	4.6	823	152	
RC-02	1	45	46	1	0.50	0.8	-	-
	2	195	196	1	1.40	0.9	-	-
RC-04		7	8	1	3.07	11	-	-
	1	18	19	1	0.94	1.7	-	-
	2	21	22	1	3.83	0.7	-	-
		31	34	3	1.25	0.83	-	-
	3	43	49	6	1.41	1.33	-	-
		57	58	1	1.00	0.4	-	-
	4	65	70	5	1.76	1.7	-	-
	5	77	78	1	1.15	1.2	-	-
		99	101	2	0.64	0.95	-	-
		103	104	1	1.59	2.5	-	-
	6	108	110	2	2.58	1.05	-	-
7	126	130	2	0.8	4.1	-	-	
8	143	145	2	0.61	1.55	-	-	
9	193	199	7	1.57	0.27	-	-	

Map 3B: Section B B' through Target 2.