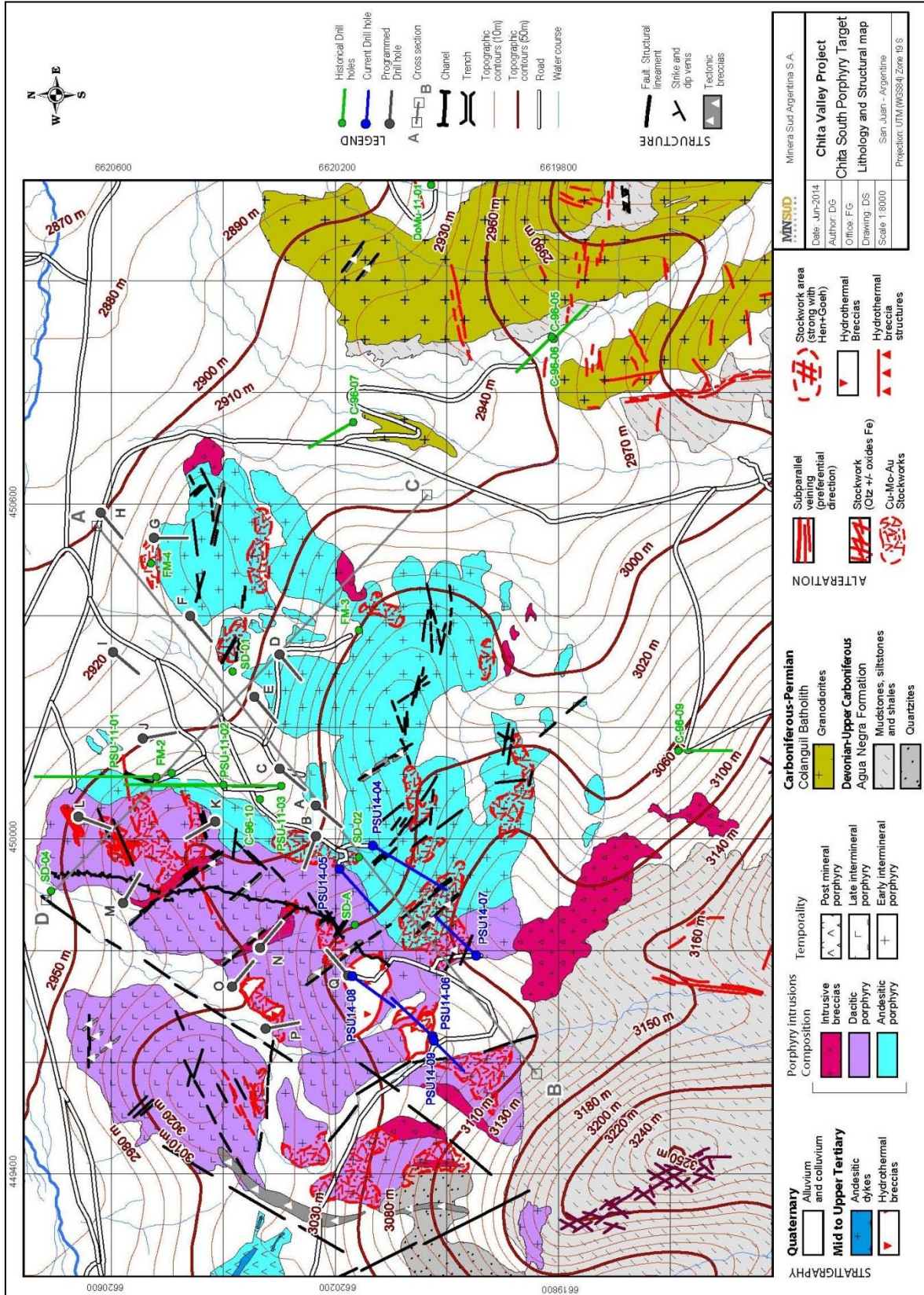
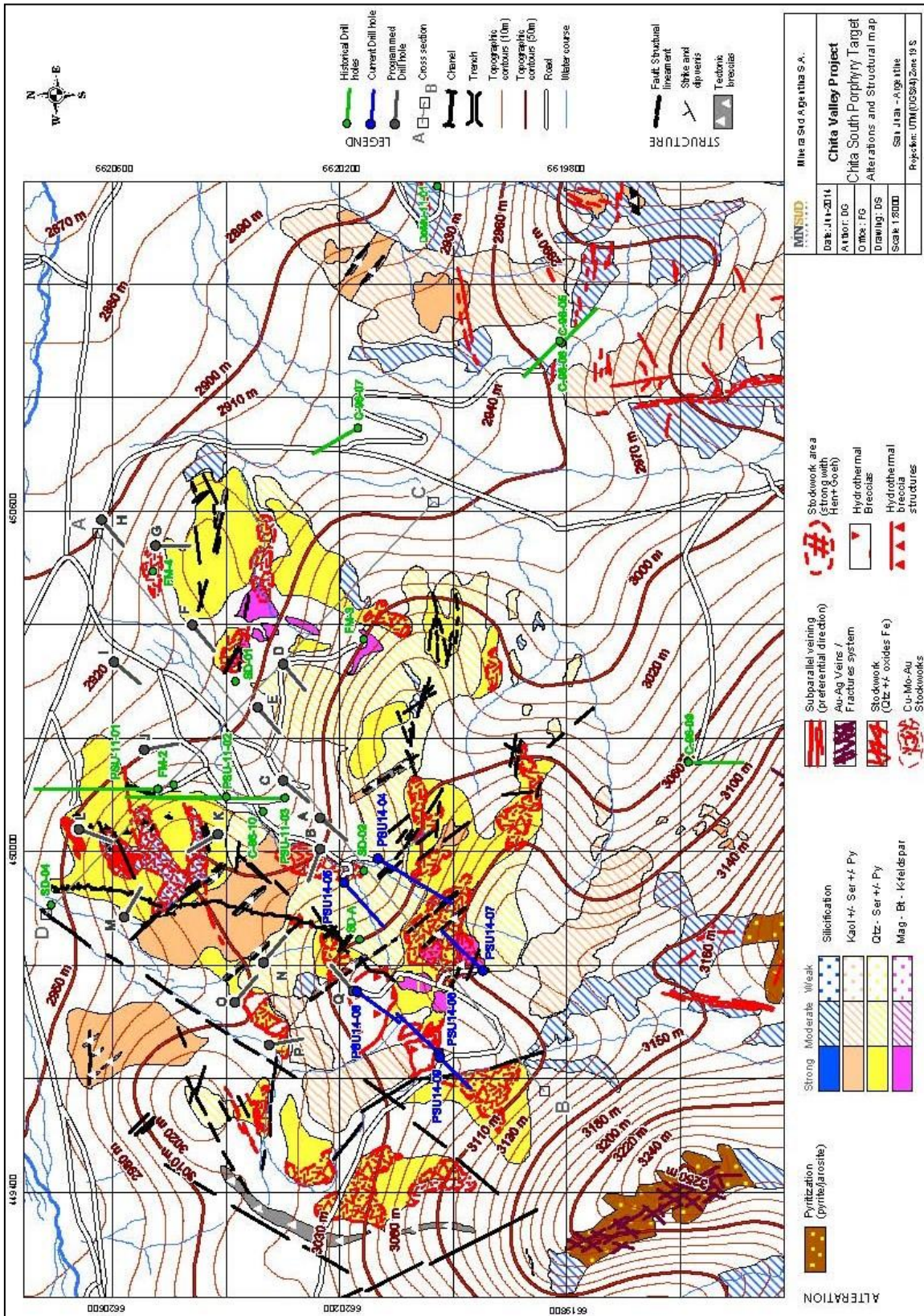


Map 1: Lithological & Structural Map



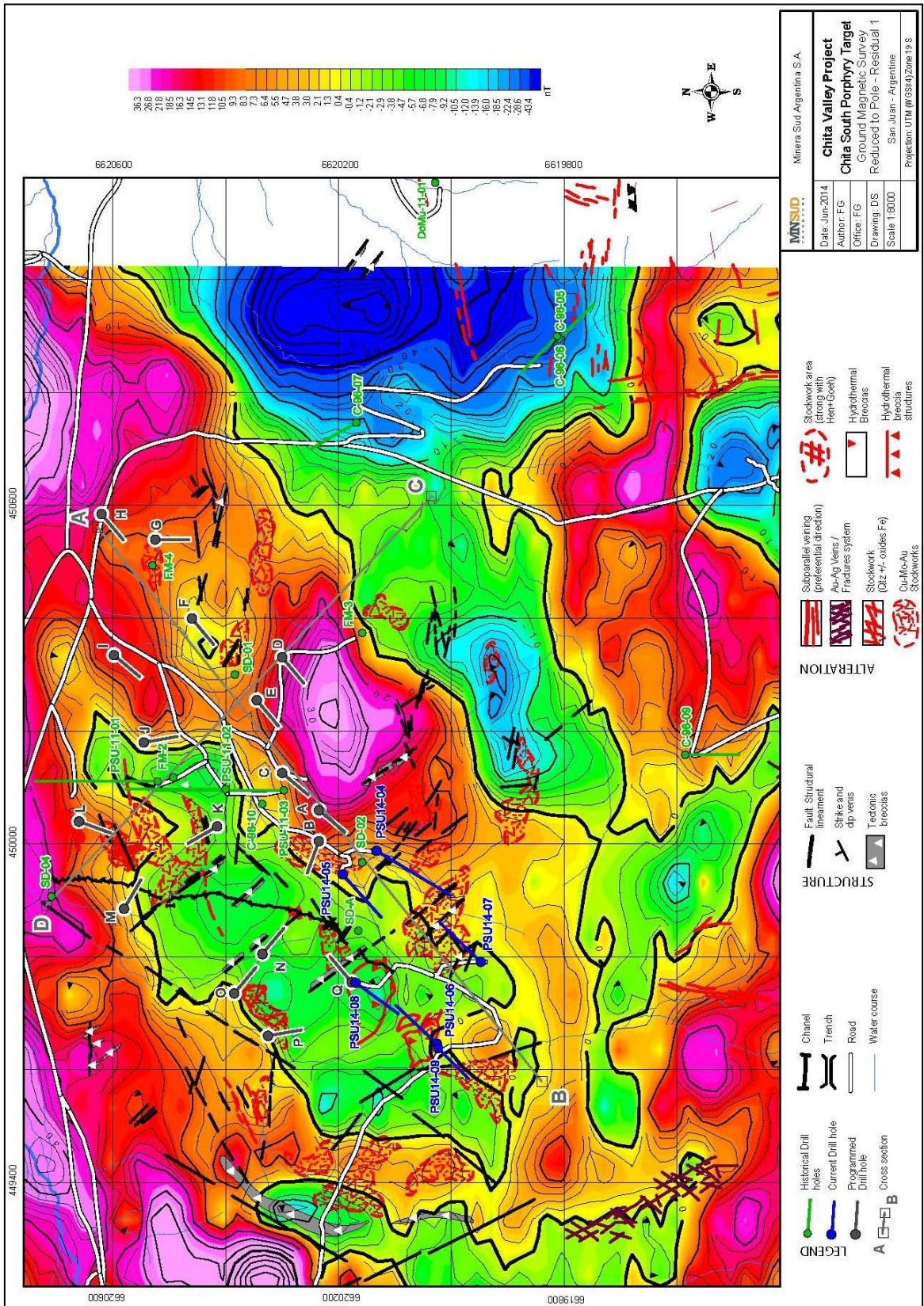


## Map 2: Alteration & Structural Map





Map 3: Ground Magnetic Survey, Reduced to Pole Residual 1



<b>MINSUD</b> Minera Sud Argentina S.A.
<b>Chita Valley Project</b>
<b>Chita South Porphyry Target</b>
Ground Magnetic Survey
Reduced to Pole - Residual 1
Date: Jun-2014
Author: FG
Office: DS
Drawing: DS
Scale: 1:8000
San Juan - Argentina
Projection: UTM @ 68847 Zone 19 S

**LEGEND**

- Historical Drill holes (Green circle)
- Current Drill hole (Blue circle)
- Programmed Drill hole (Black circle)
- Cross section (A-B)
- Channel (Double line)
- Trench (Single line)
- Road (Double line with dashes)
- Water course (Single line with wavy dashes)

**STRUCTURE**

- Fault: Structural (Black line with ticks)
- lineament (Black line)
- Strike and dip veins (Black line with arrows)
- Fractures system (Black line with dots)
- Tectonic breccias (Black line with triangles)

**ALTERATION**

- Subparallel veining (Red hatched pattern)
- Preferential direction (Red hatched pattern)
- Au-Ag Veins / Fractures system (Red hatched pattern)
- Stockwork (Red hatched pattern)
- Qtz +/- oxides Fe (Red hatched pattern)
- Cu-Mo-Au Stockworks (Red hatched pattern)
- Stockwork area (Strong with Perm-Goeth) (Red hatched pattern)
- Hydrothermal Breccias (Red hatched pattern)
- Hydrothermal breccia structures (Red hatched pattern)