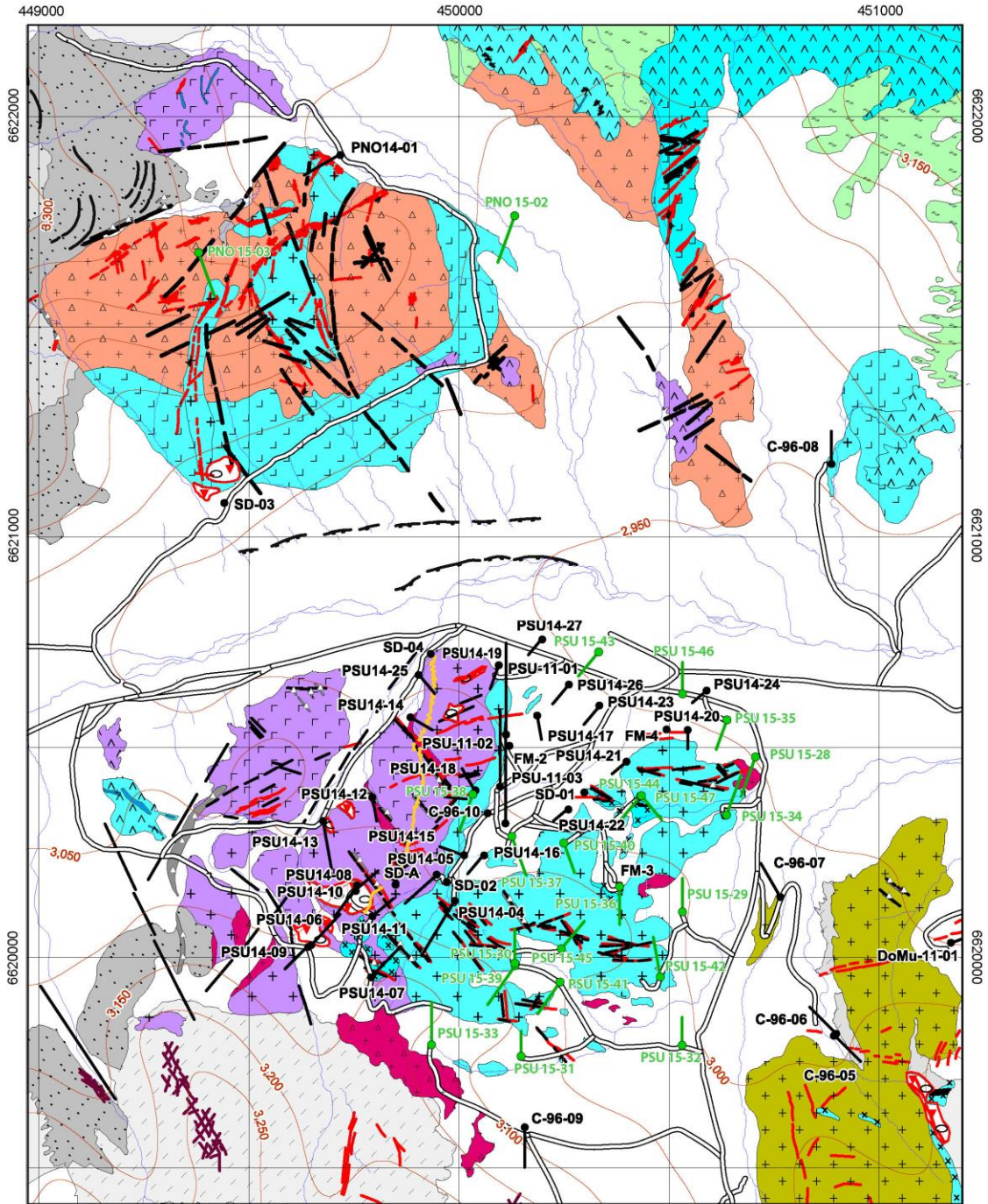
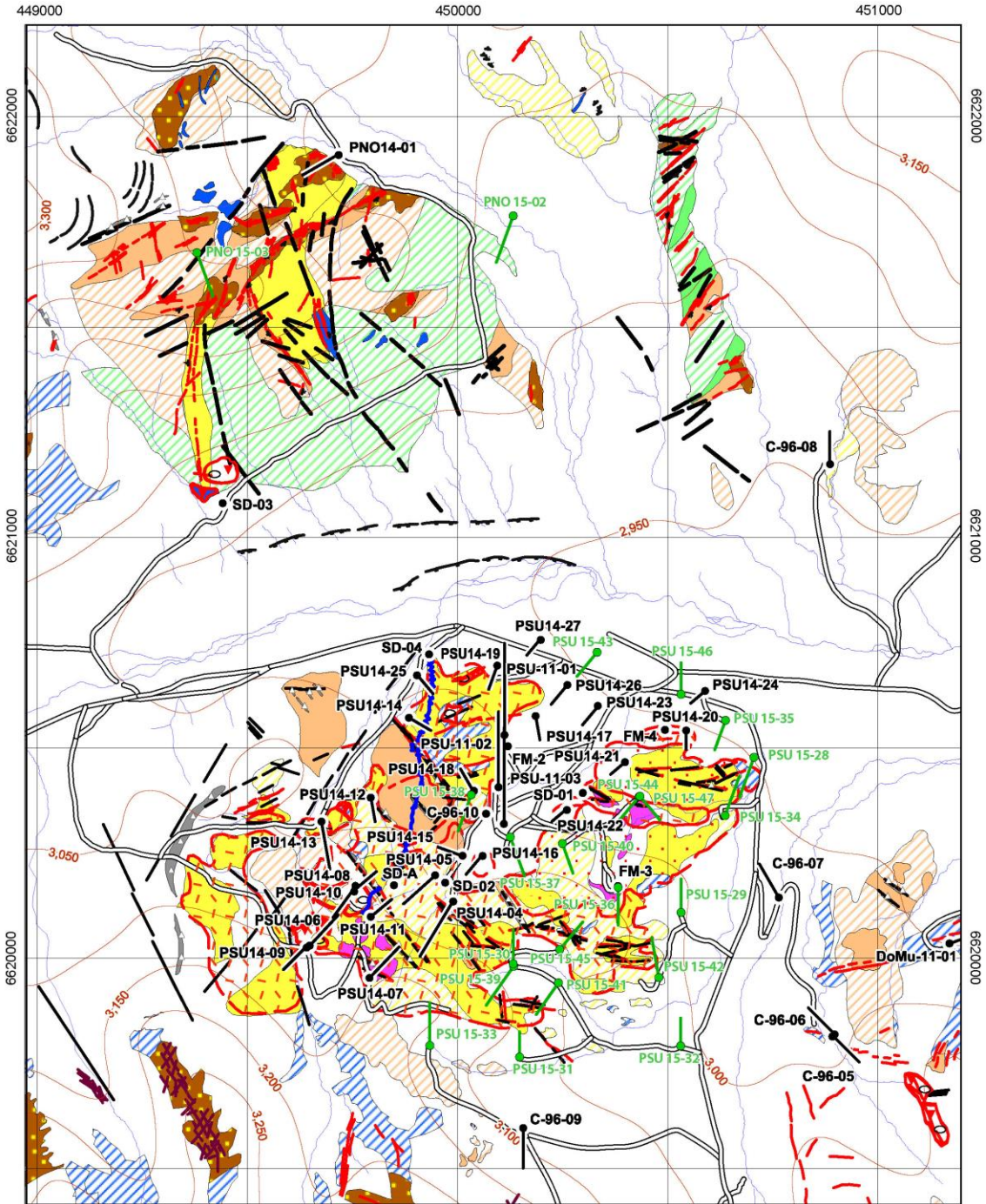


Map 1: Lithological & Structural Map



STRATIGRAPHY Quaternary Alluvium and colluvium Mid to Upper Tertiary Mafic volcanoclastic Andesitic dykes Hydrothermal-Magmatic breccias	Porphyry intrusions Composition PM EMD LIM EIM EM Temporality Dacitic porphyry Andesitic porphyry Undifferentiated breccias Intrusive breccias	Carboniferous-Permian Colanguil Batholith Granodiorites Devonian-Upper Carboniferous Aqua Negra Formation Mudstones, siltstones and shales Quartzites Undifferentiated sedimentites	ALTERATION Epithermal veins	LEGEND Drill hole 2015 Existing drill hole Channel Topographic contours (50m) Road Water course	STRUCTURE Fault. Structural lineament Tectonic breccias Slumping fault Strike and dip veins	MINSUD Minera Sud Argentina S. A. Date: Oct-2015 Author: DG Office: FG Drawing: DS Scale 1:11500 Projection: UTM (WGS84) Zone 19 S	Chita Valley Project Chita Porphyry Target Lithology and Structural map San Juan - Argentina

Map 2: Alteration & Structural Map



- ALTERATION**
- Pyritization (pyrite/jarosite)
 - Strong
 - Moderate
 - Weak
 - Silicification
 - Chl - Bt
 - Kaol +/- Ser +/- Py
 - Qtz - Ser +/- Py
 - Mag - Bt - K-feldspar

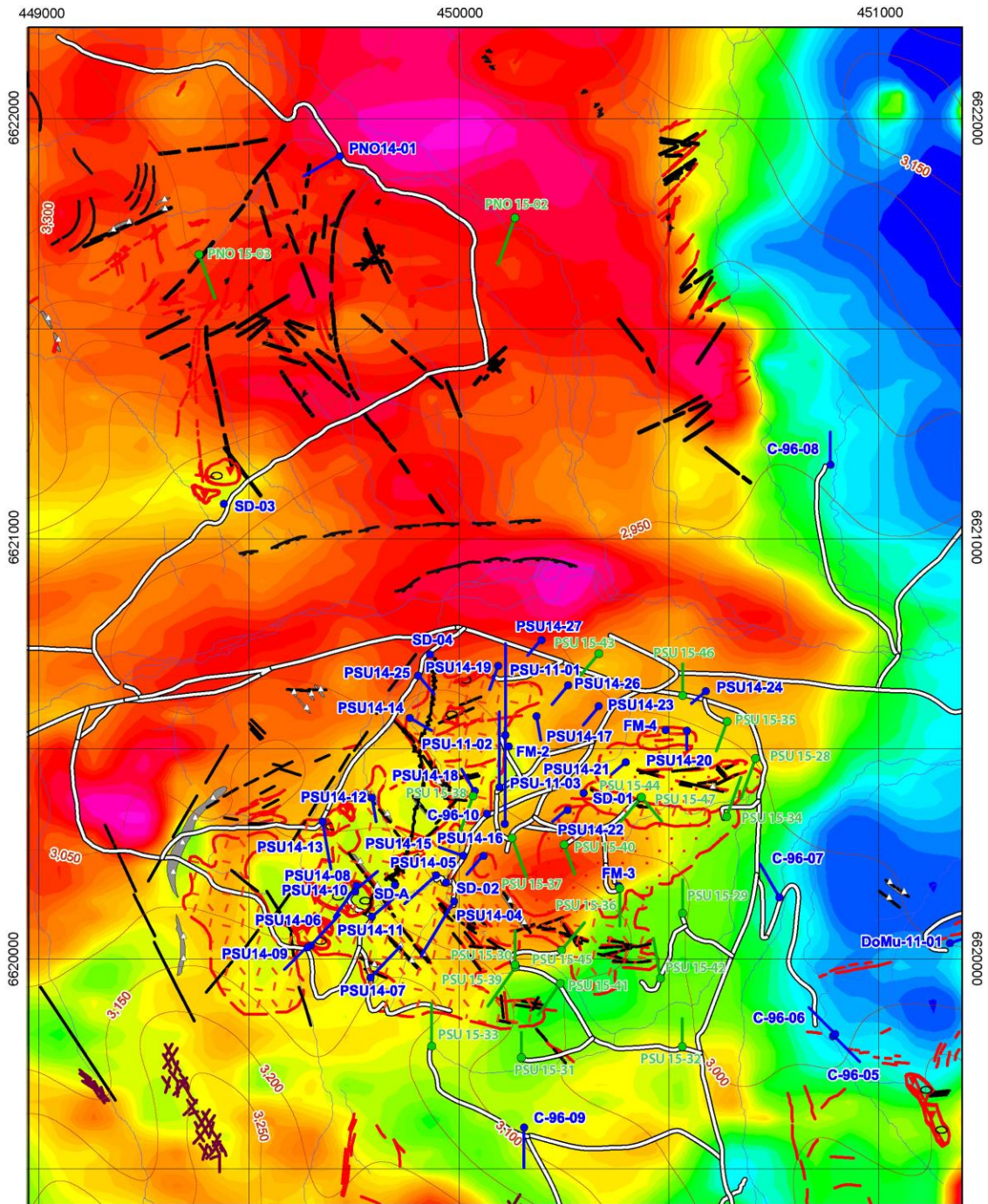
- Hydrothermal-Magmatic breccias
- Epithermal veins
- Stockwork (Qtz +/- oxides Fe)
- Stockwork mineralization sector
- Disseminated mineralization sector



- LEGEND**
- Drill hole 2015
 - Existing drill hole
 - Channel
 - Topographic contours (50m)
 - Road
 - Water course
 - Fault, Structural lineament
 - Tectonic breccias
 - Slumping fault
 - Strike and dip veins

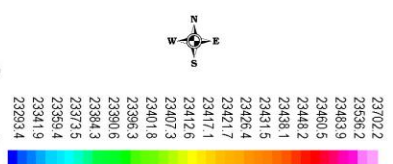
MINSUD <small>MINERÍA SUD ARGENTINA S.A.</small>	Minera Sud Argentina S. A.
Chita Valley Project	
Chita Porphyry Target	
Alterations and Structural map	
Date: Oct-2015	San Juan - Argentina
Author: DG	
Office: FG	
Drawing: DS	
Scale 1:11500	
Projection: UTM (WGS84) Zone 19 S	

Map 3: Ground Magnetic Survey, Reduced to Pole Residual 1



- ALTERATION**
- Hydrothermal -Magmatic breccias
 - Epithermal veins
 - Stockwork (Qtz +/- oxides Fe)
 - Stockwork mineralization sector
 - Disseminated mineralization sector

- LEGEND**
- Drill hole 2015
 - Existing drill hole
 - Chanel
 - Topographic contours (50m)
 - Road
 - Water course
- STRUCTURE**
- Fault: Structural lineament
 - Tectonic breccias
 - Slumping fault
 - Strike and dip veins



MINSUD Minera Sud Argentina S. A.	
Chita Valley Project	
Chita Porphyry Target	
Date: Oct-2015	Ground Magnetic Survey Reduced to Pole
Author: DG	
Office: FG	
Drawing: DS	
Scale: 1:11500	
San Juan - Argentina	
Projection: UTM (WGS84) Zone 19 S	