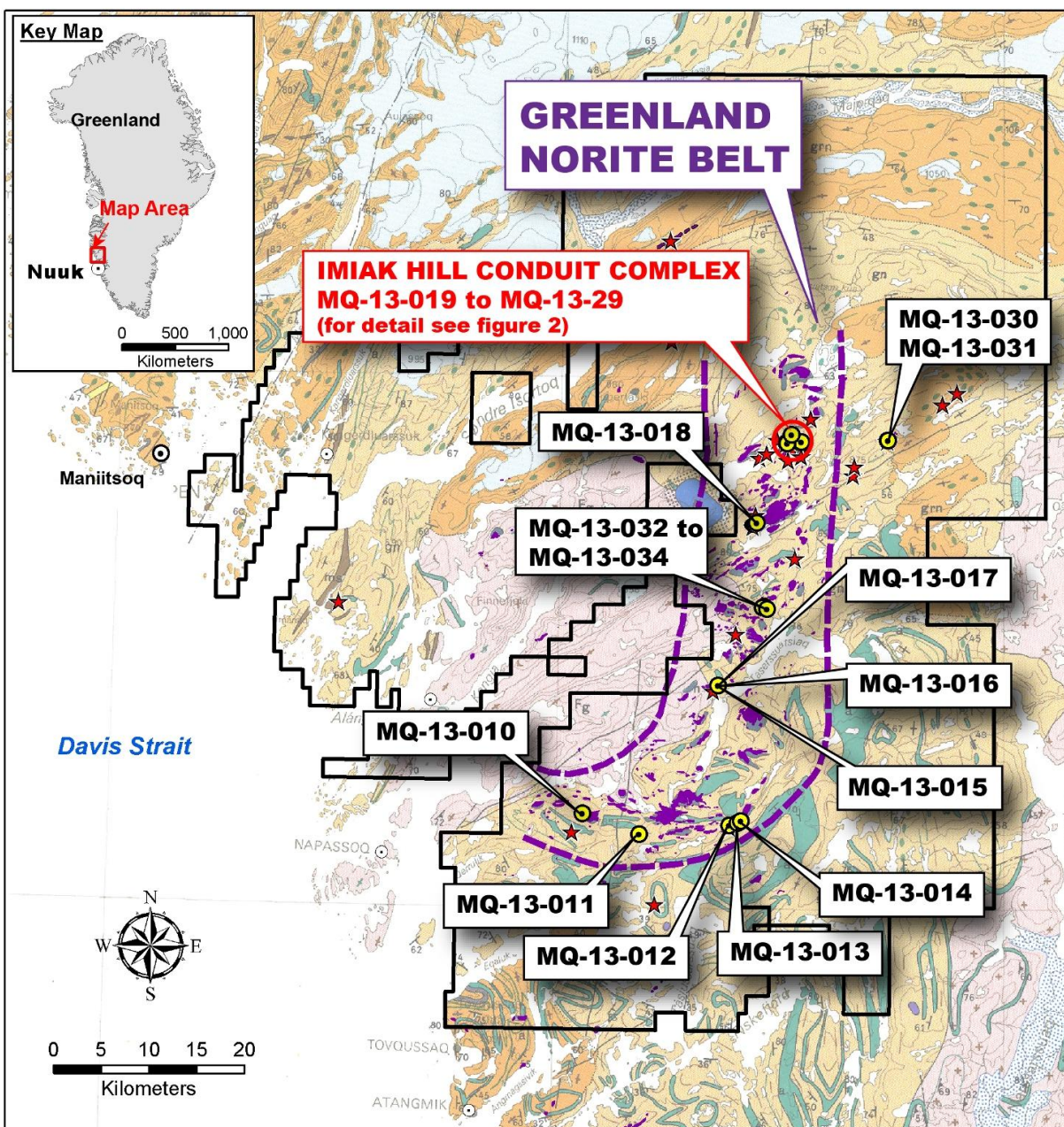


Figure 1: North American Nickel 2013 diamond drill holes at Maniitsoq.

MANIITSOQ PROJECT, SOUTHWEST GREENLAND **GEOLOGY & DIAMOND DRILL HOLE LOCATION MAP***



PROPERTY

NAN existing mineral exploration licences (2011/54 & 2012/28)

MINERALIZATION

Ni sulphide occurrence

NAN DIAMOND DRILL HOLES

2012 hole collar (9 holes, 1,551 m)

2013 collar (25 holes, 4,266 m)

GEOLOGY*

Recent

Ice
Mesozoic
 Carbonatite

Archean

Ni ± Cu ± Co ± PGE showing
 Noritic intrusion
 Granite / granodiorite gneiss
 Gneiss - mainly enderbitic
 Gneiss - mainly TTG
 Amphibolite

* After Geological Map of Greenland series map sheet 2, 1989
 ** After Jensen et al., 2004

Figure 2: Imiak Hill Conduit Complex (IHCC) plan map.

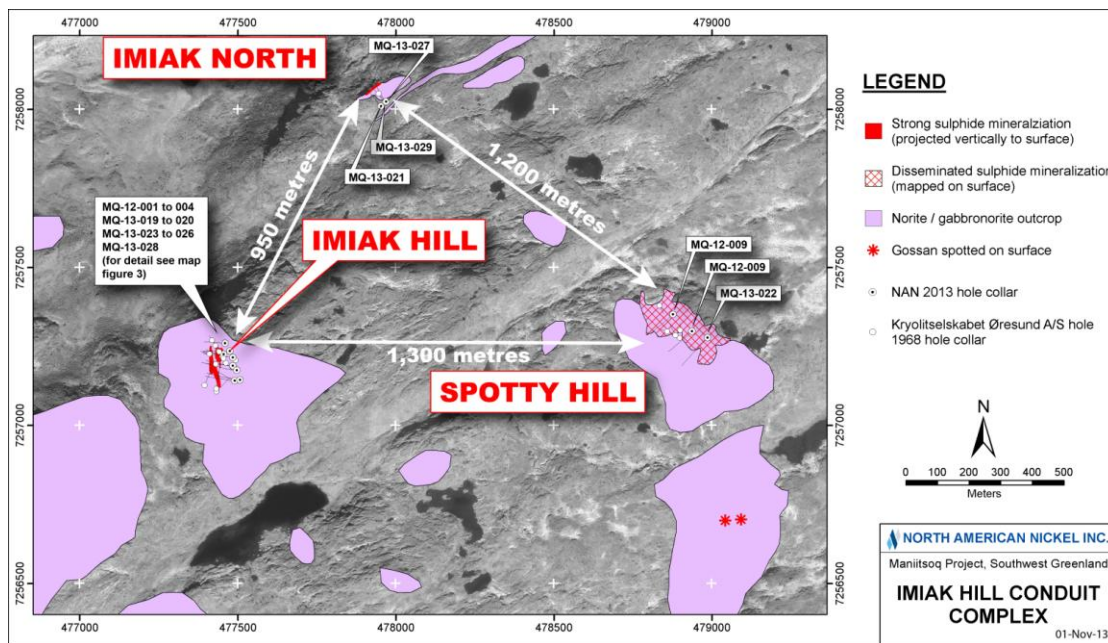
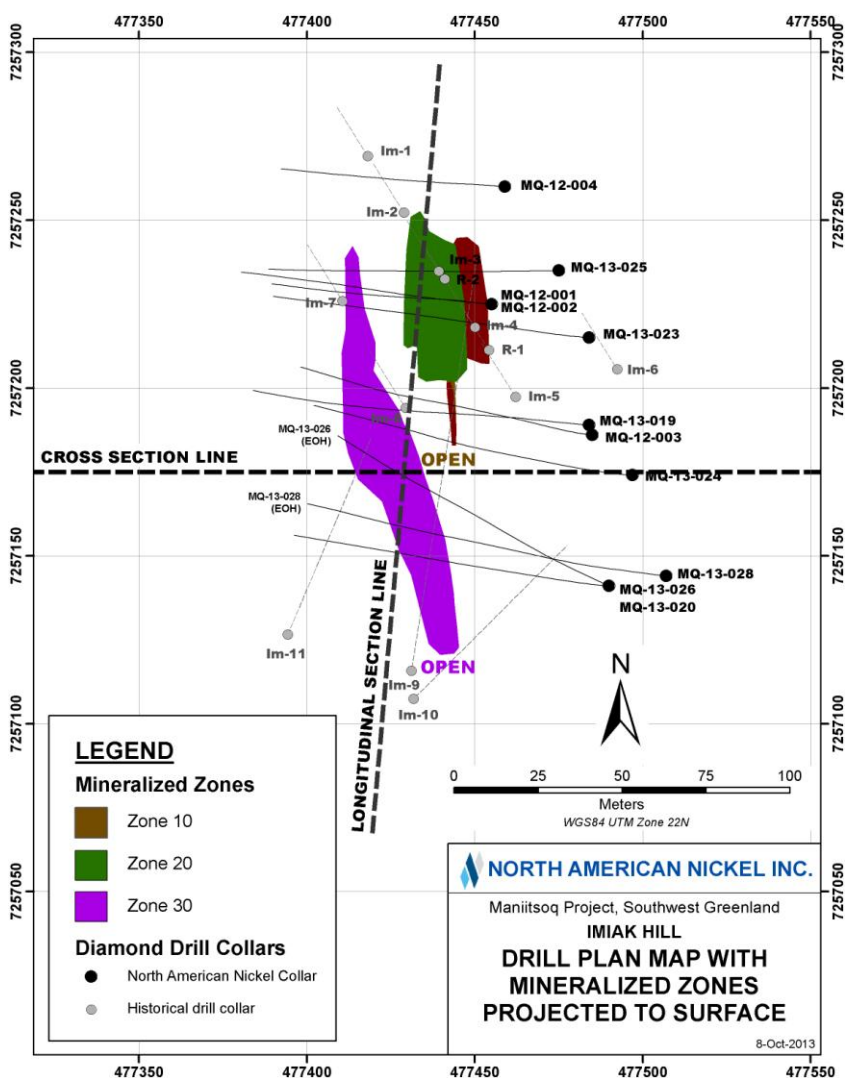


Figure 3: Imiak Hill plan map.



COMPOSITE VERTICAL LONGITUDINAL SECTION
Looking West (275°)

Legend

- Zone 10 Pierce Points**
 - North American Nickel hole
 - Historical hole
- Zone 20 Pierce Points**
 - North American Nickel hole
 - Historical hole
- Zone 30 Pierce Points**
 - North American Nickel hole
 - Historical hole
- Approximate Zone Boundary**
 - Zone 10
 - Zone 20
 - Zone 30
- NSA = No significant assays

N.B. Lengths in brackets are estimated true widths based on the current geological model and are only calculated for NAN's holes (historical holes are at poor angles and do not properly test the zones). All other lengths are core lengths.

04-Nov-13

Figure 5: Vertical cross section through the Imiak Hill Zone (looking north) Note: only North American Nickel's holes are shown.

