

Figure 1: Wireframe image of the Offset Zone mineralization & mine elevations.

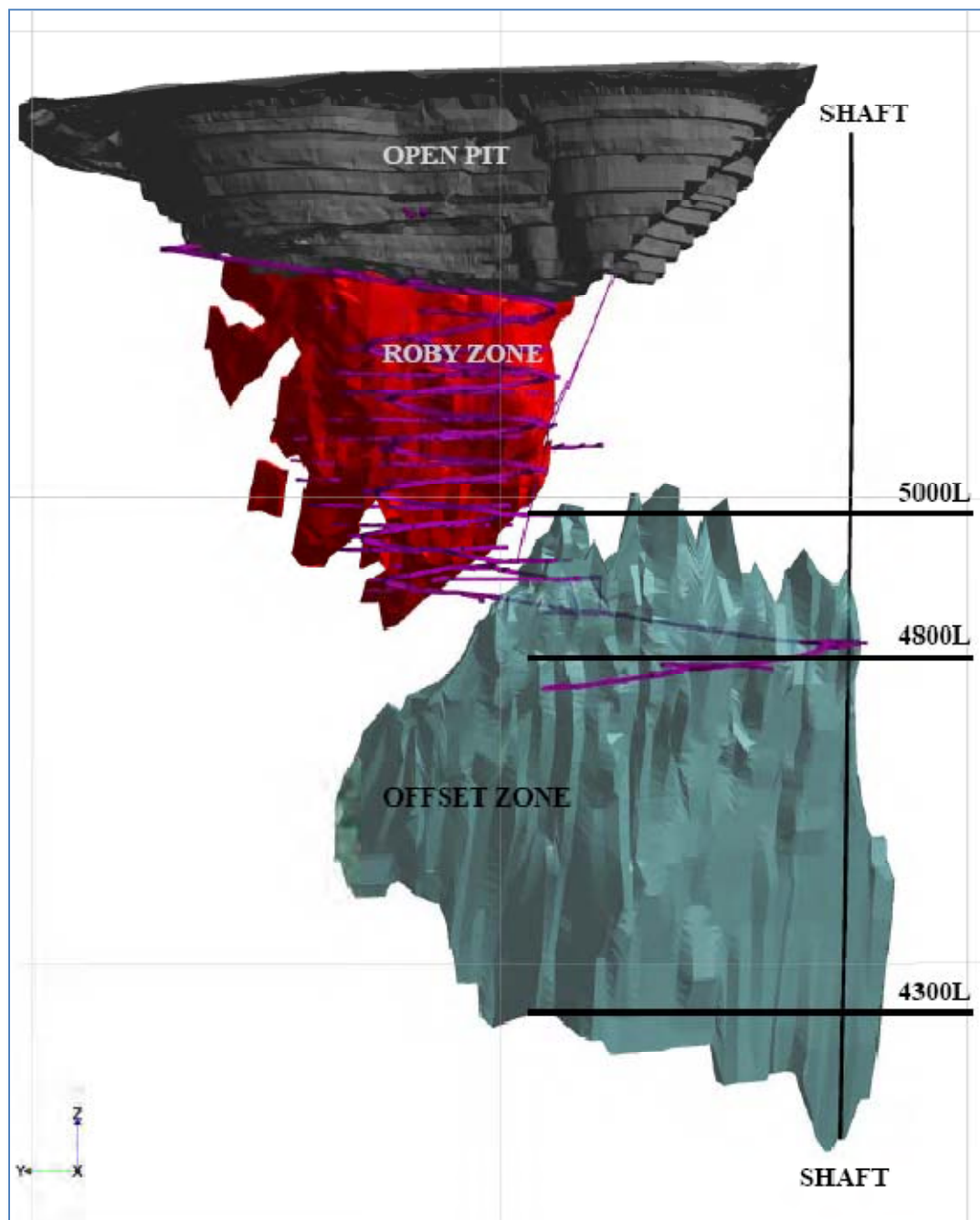


Figure 2: Visual of all holes from 2011 drilling, looking east.

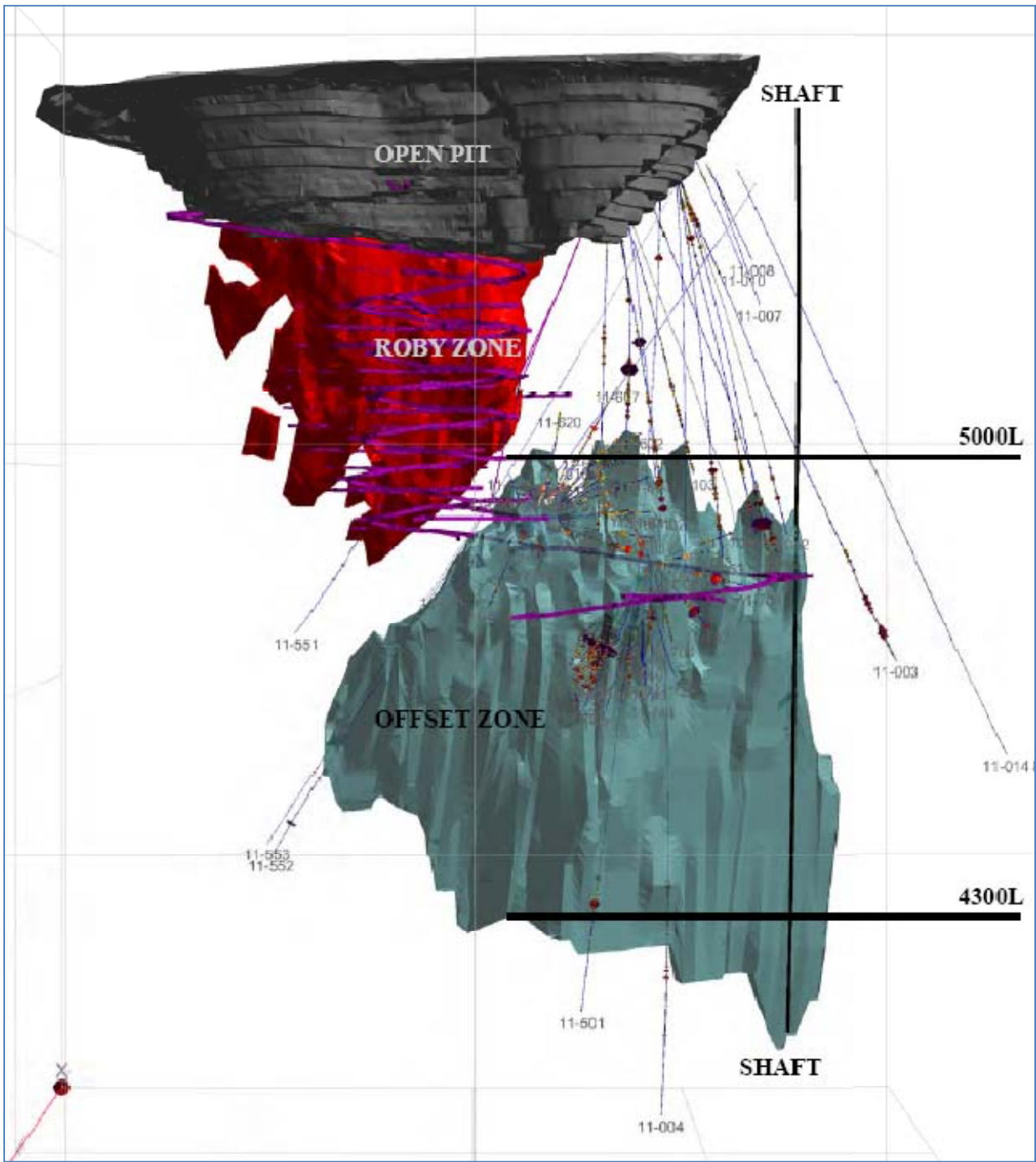


Figure 3: Southern Deep Offset Zone, showing Hole 10-013 from 2010 drilling (*intersected 69 m at 3.5 g/t Pd, including 13 m at 5.7 g/t Pd.*), looking east.

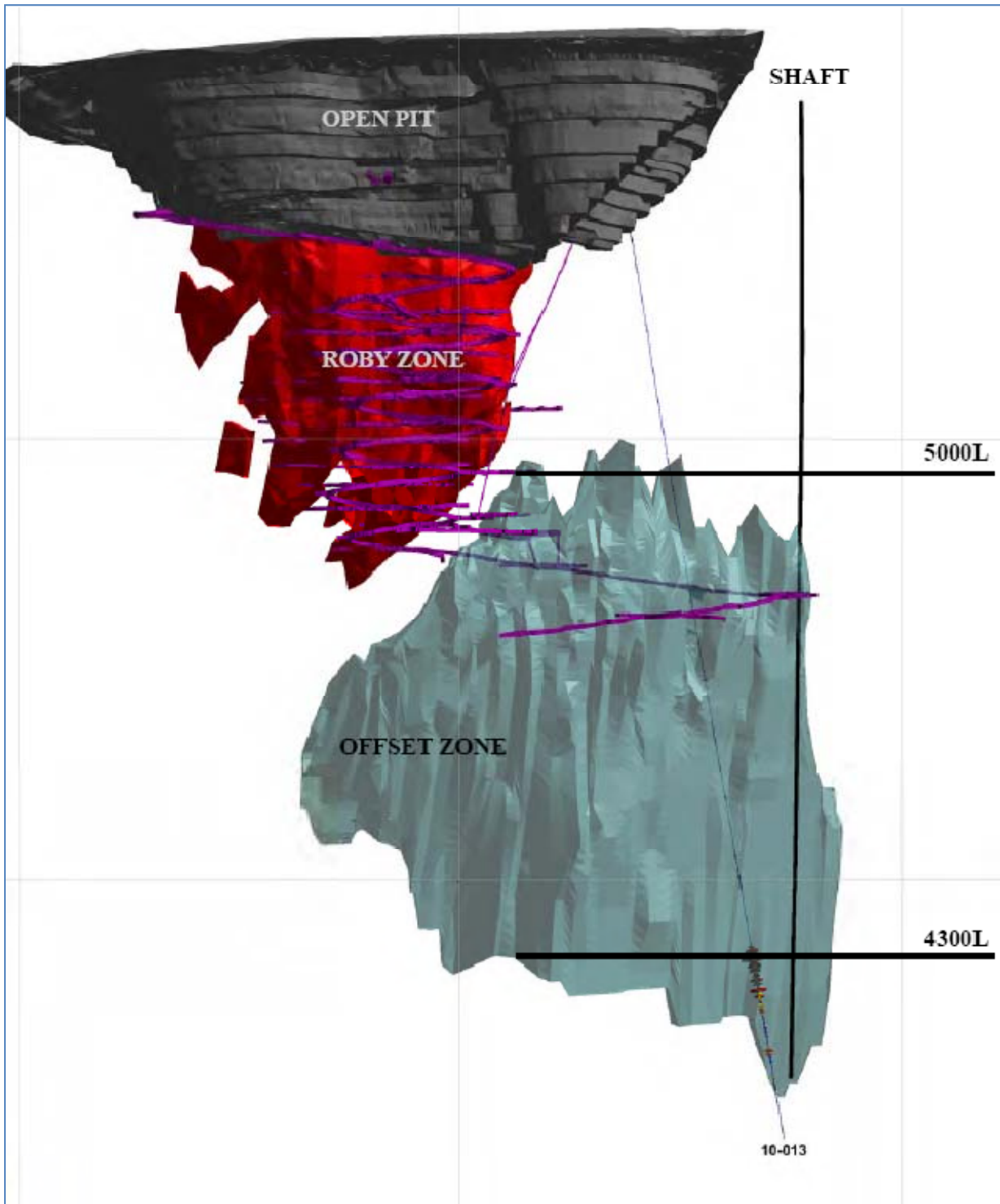


Figure 4: Surface drilling following the extension of the Offset Zone, series of 11-100 and 11-050 holes, looking east.

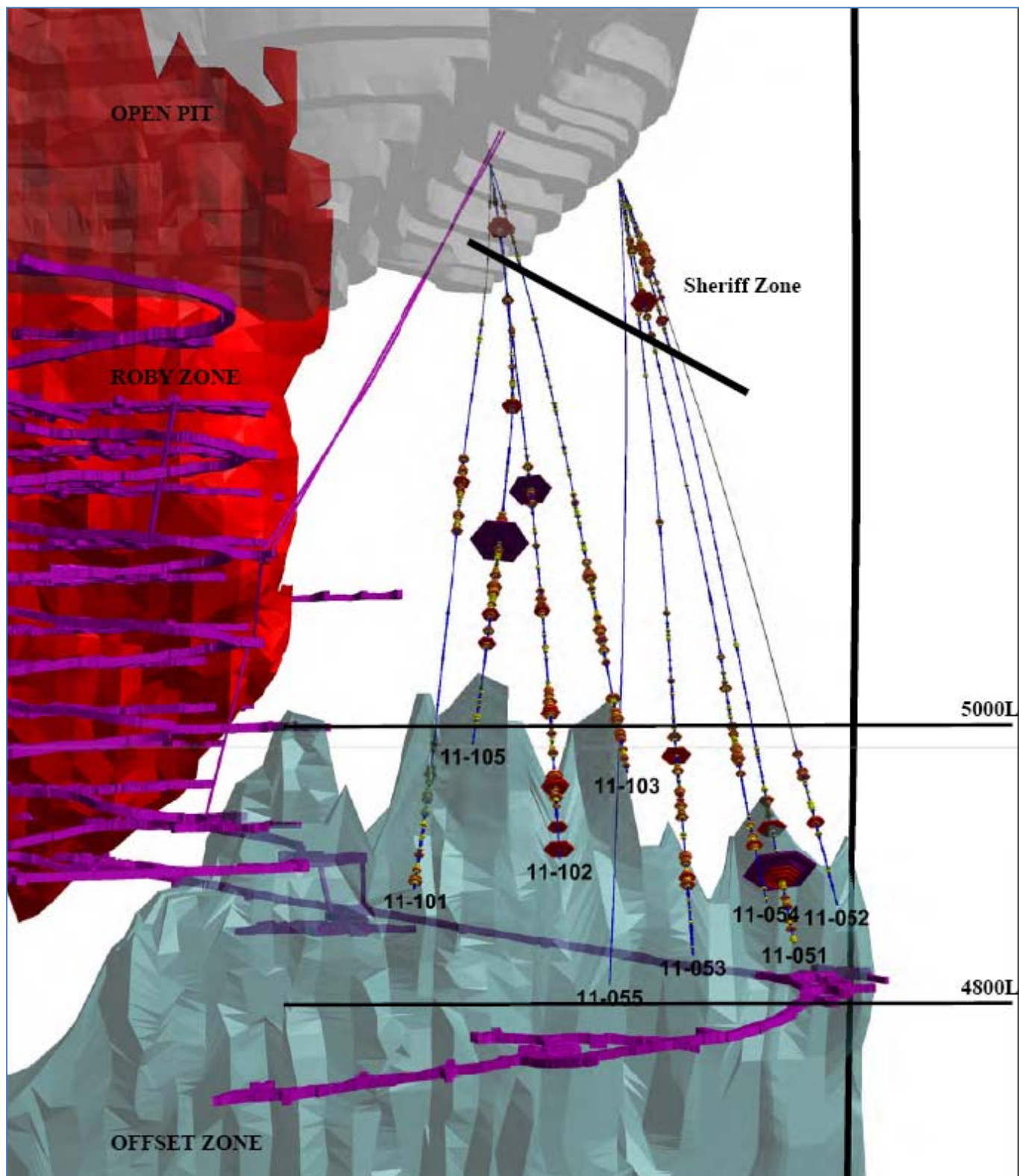


Figure 5: Surface drilling following the extension of the Offset Zone, series of 11-100 and 11-050 holes, looking down.

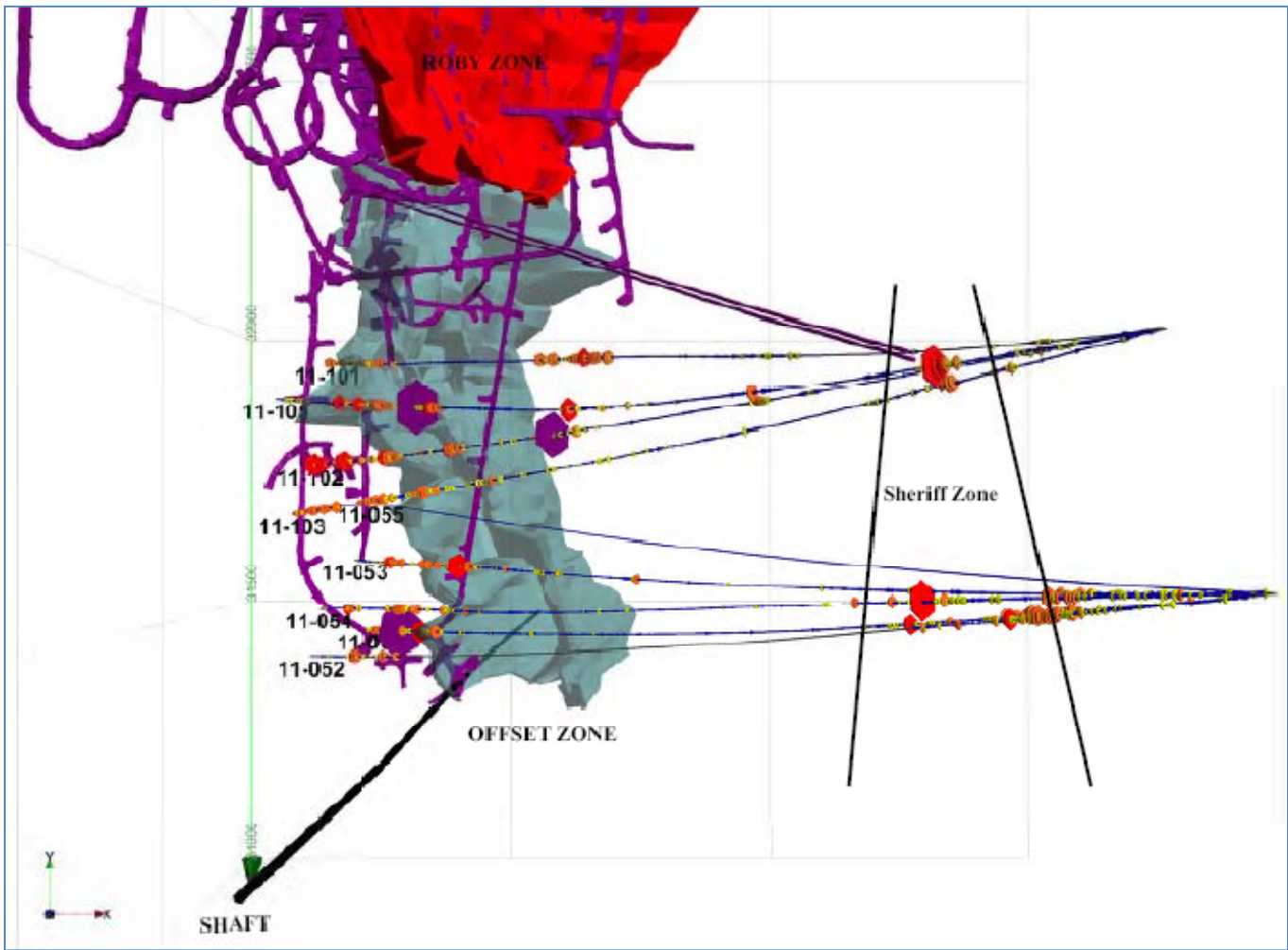


Figure 6: Surface drilling, location of Hole 11-003 (the most southern hole), looking east.

The south extension of the Offset Zone still remains open over 150 metres past the location of the shaft, where Hole 11-003 first intersected the Sheriff Zone (30 metres at 3.5 g/t Pd) and then the Offset Zone (88 metres at 3.6 g/t Pd, including 22 metres of 5.5 g/t Pd and 20 metres of 5.7 g/t Pd).

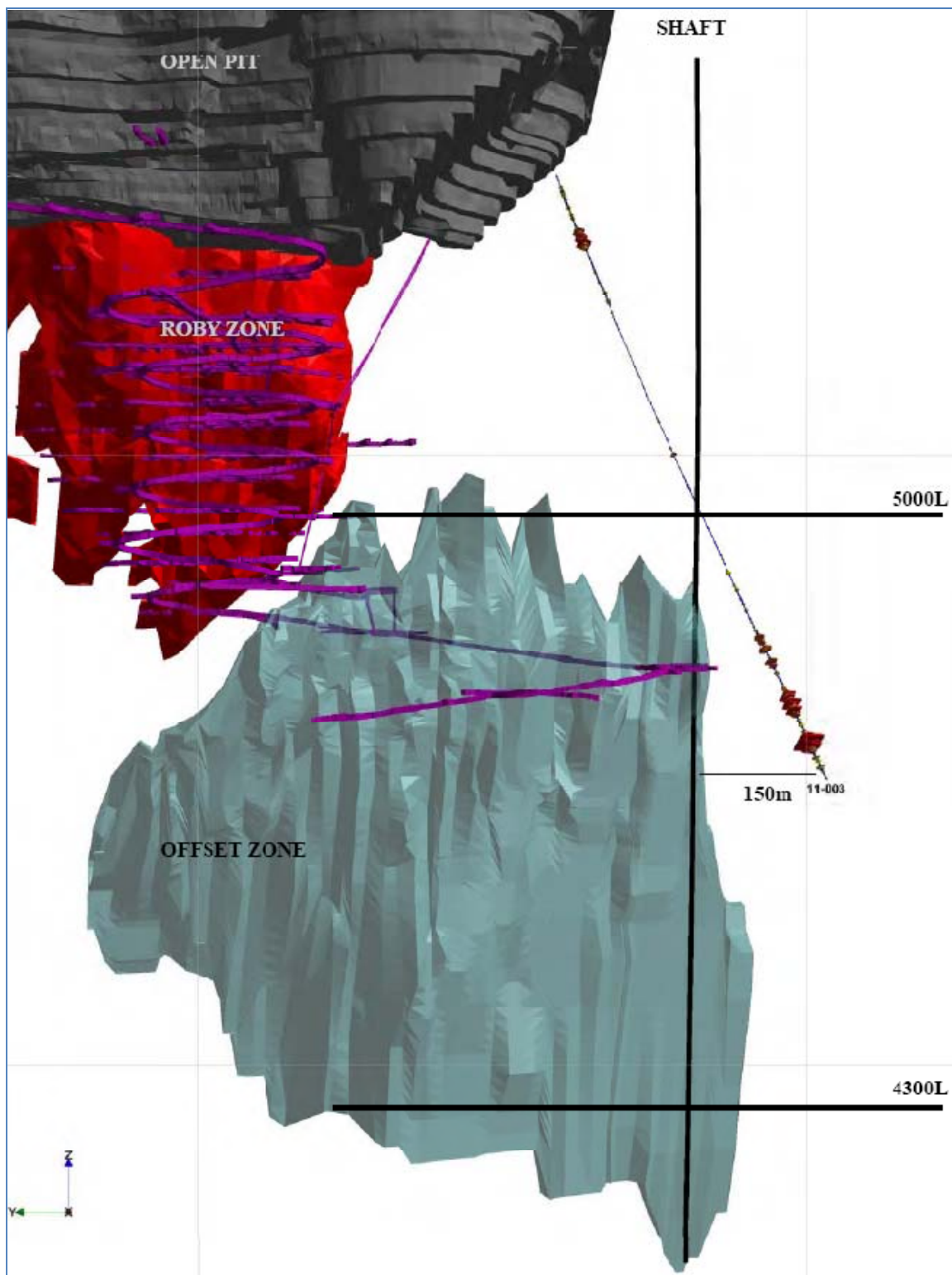


Figure 7: Underground definition drilling, Hole 11-700 series looking east.

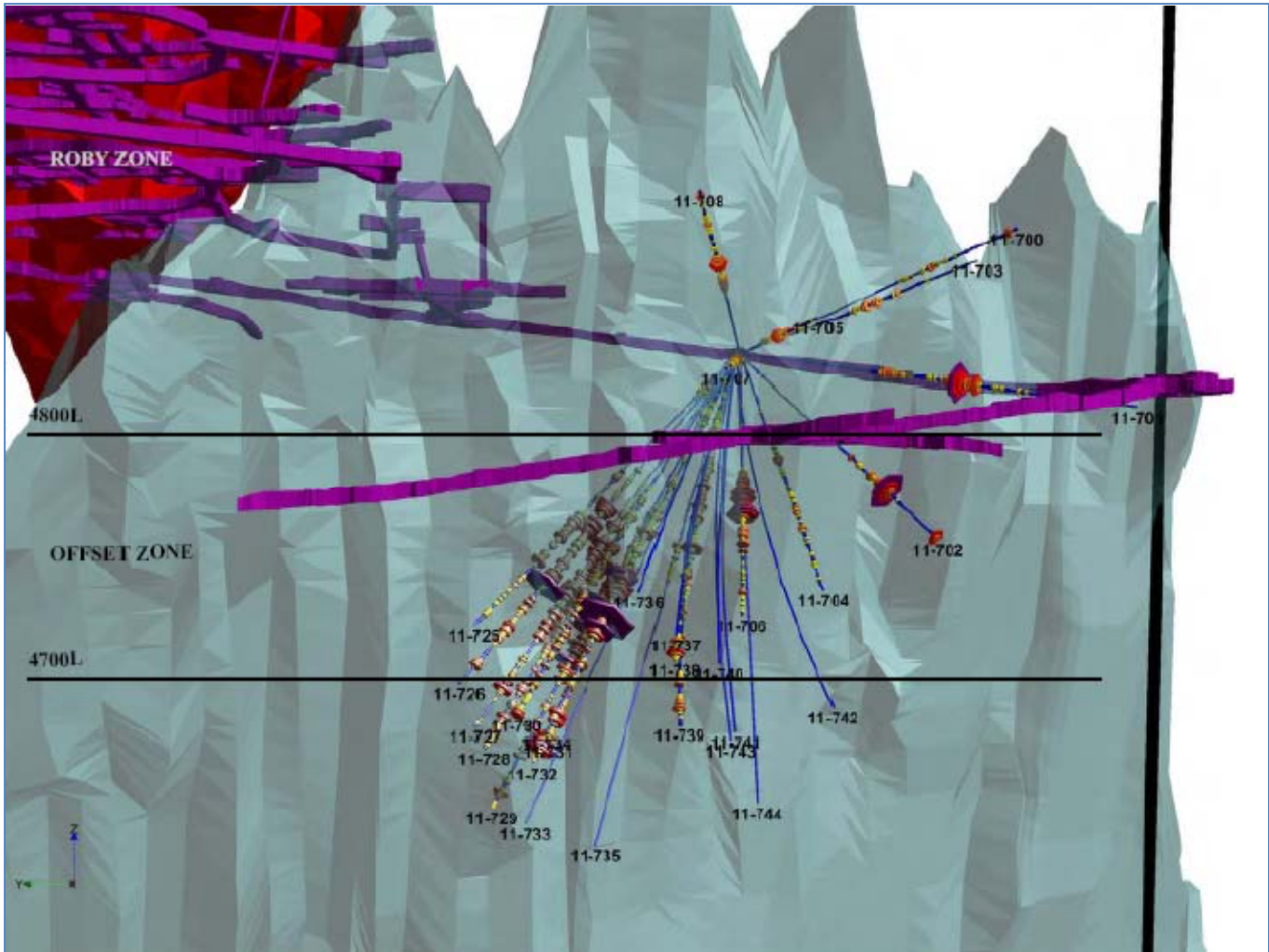


Figure 8: Underground definition drilling, hole 11-600 series looking east.

