

GAINY ONE ARR (ESTEL.GAINY1)

MONTREAL ATIS	133.7 (Eng)	
	127.5 (Fr)	
MONTREAL ARR	118.9 124.65	
	126.9 132.85	
	268.3	
MONTREAL TWR	119.9 267.1	
MONTREAL GND	121.9 275.8	

WHEN A LOWER ALTITUDE IS ISSUED, PILOTS SHALL DESCEND ON THE STAR PROFILE TO THE ATC ASSIGNED ALTITUDE. CHARTED RESTRICTIONS ABOVE THE ASSIGNED ALTITUDE REMAIN MANDATORY.

If RNAV STAR includes a DTW, the following procedures apply.
If approach clearance is NOT RECEIVED prior to DTW

- Fly depicted heading ●●●➔
- Expect radar vectors to final

If approach clearance RECEIVED prior to DTW

- Fly RNAV STAR via DTW, then
- Via FACF, then
- Fly the STRAIGHT-IN approach

OBRET TRANSITION (OBRET.GAINY1)
 BEMOG TRANSITION (BEMOG.GAINY1)
 TIBAR TRANSITION (TIBAR.GAINY1)

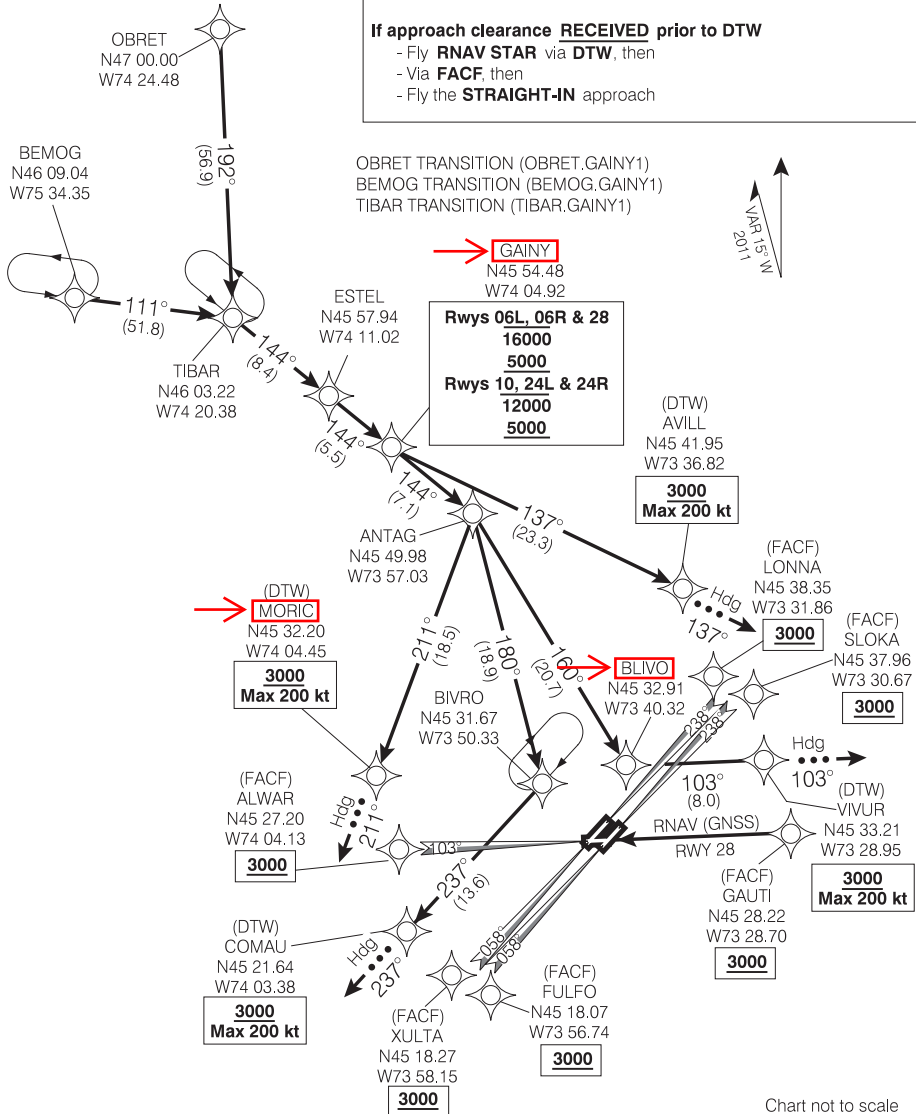
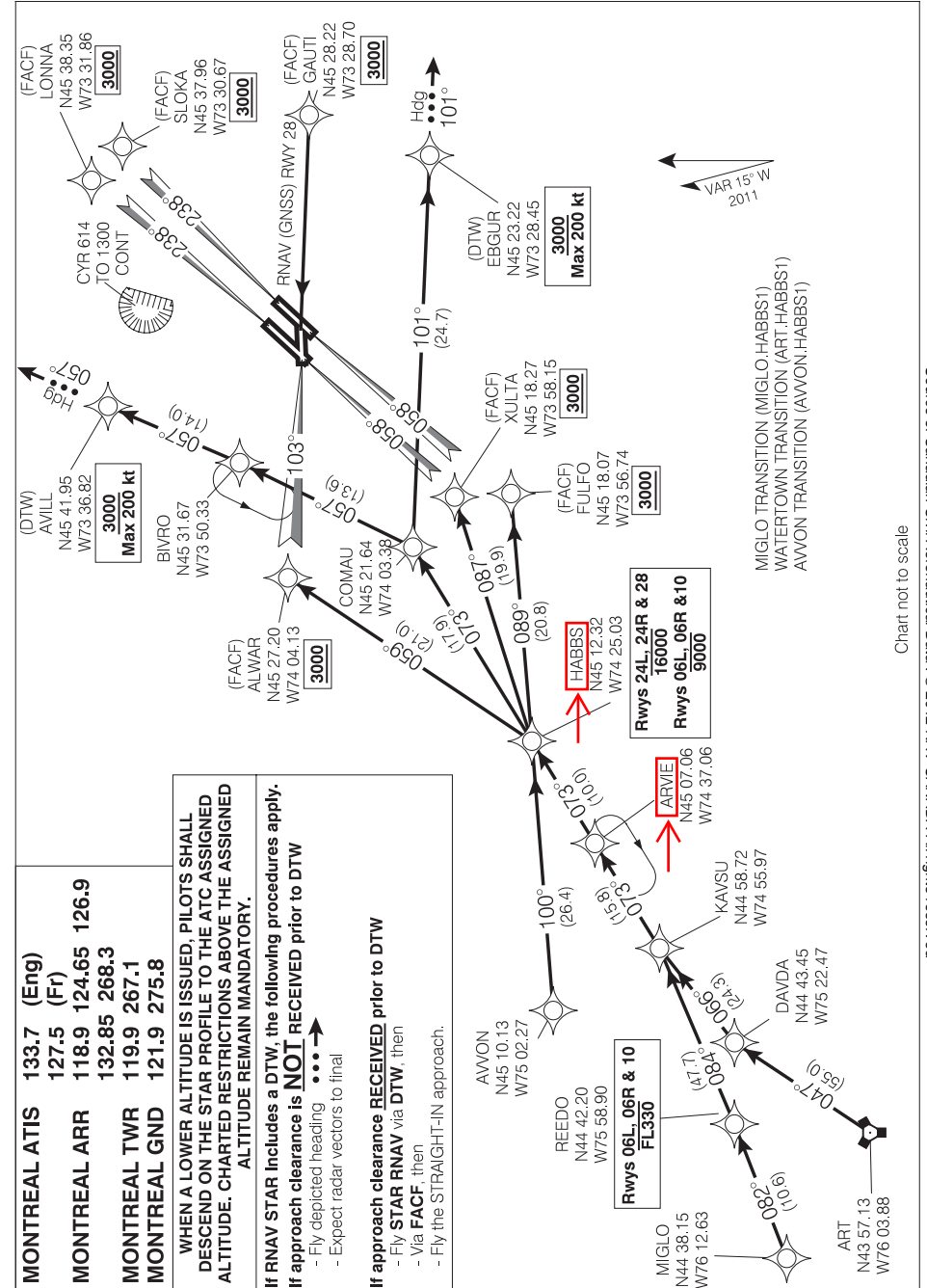


Chart not to scale

GAINY ONE ARR (ESTEL.GAINY1)

STAR (RNAV)
HABBS ONE ARR (HABBS.HABBS1)

MONTREAL/PIERRE ELLIOTT TRUDEAU INTL
 MONTREAL QC



MONTREAL ATIS	133.7 (Eng)
MONTREAL ARR	127.5 (Fr)
MONTREAL TWR	118.9 124.65 126.9
MONTREAL GND	132.85 268.3
	119.9 267.1
	121.9 275.8

WHEN A LOWER ALTITUDE IS ISSUED, PILOTS SHALL DESCEND ON THE STAR PROFILE TO THE ATC ASSIGNED ALTITUDE. CHARTED RESTRICTIONS ABOVE THE ASSIGNED ALTITUDE REMAIN MANDATORY.

If RNAV STAR includes a DTW, the following procedures apply.
 If approach clearance is **NOT** RECEIVED prior to DTW
 - Fly depicted heading
 - Expect radar vectors to final

If approach clearance is **RECEIVED** prior to DTW
 - Fly STAR RNAV via DTW, then
 - Via FACP, then
 - Fly the STRAIGHT-IN approach.

MIGLO TRANSITION (MIGLO.HABBS1)
 WATERTOWN TRANSITION (ART.HABBS1)
 AAWON TRANSITION (AAWON.HABBS1)

Rwys 24L, 24R & 28
 16000
Rwys 06L, 06R & 10
 9000

Chart not to scale

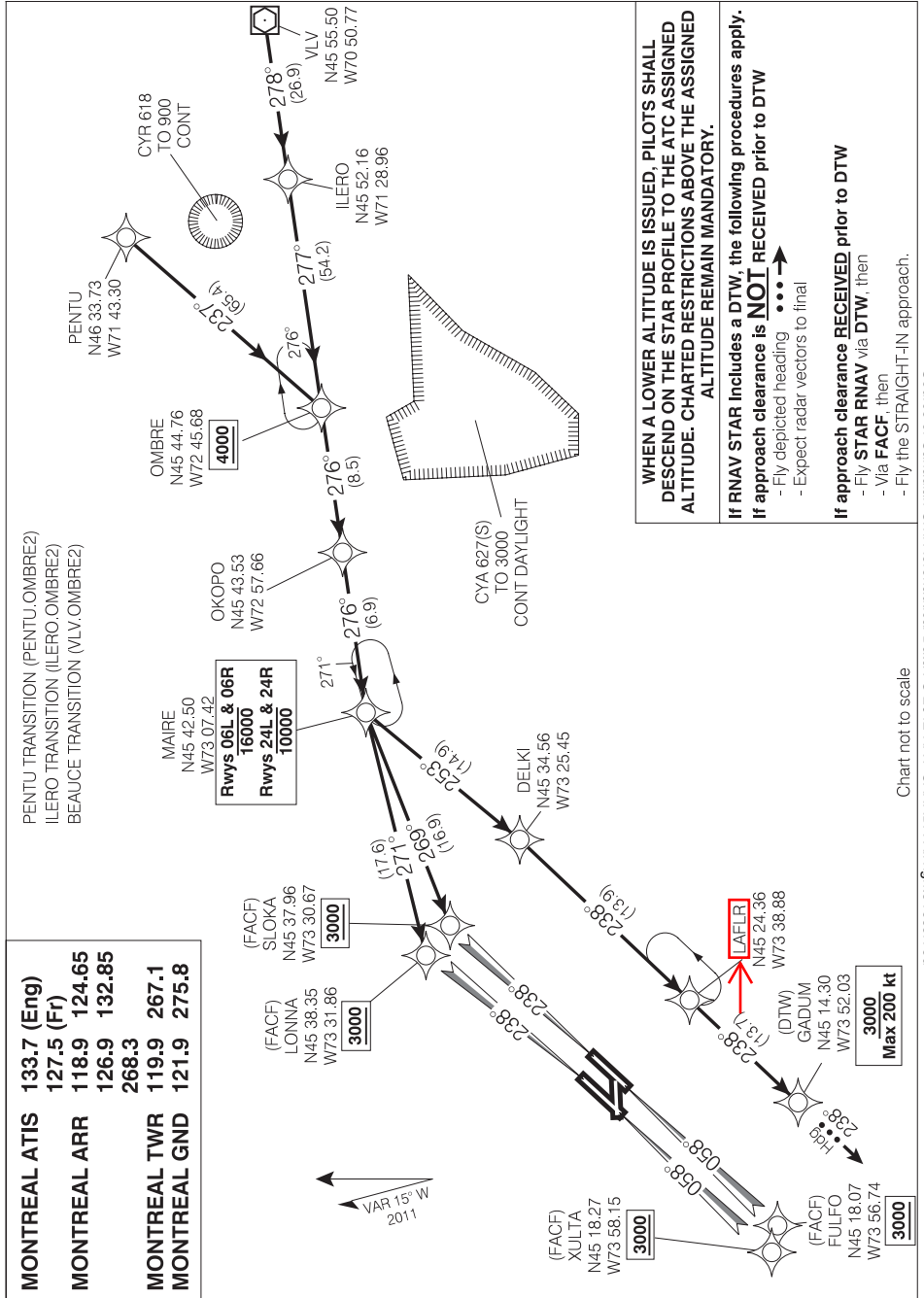
Source of Canadian Civil Aeronautical Data : © 2012 NAV CANADA. All rights reserved

HABBS ONE ARR (HABBS.HABBS1)

MONTREAL/PIERRE ELLIOTT TRUDEAU INTL
 MONTREAL QC

STAR (RNAV) RWYS 06L, 06R, 24L, 24R
OMBRE TWO ARR (OMBRE.OMBRE2)

MONTREAL/PIERRE ELLIOTT TRUDEAU INTL
 MONTREAL QC



OMBRE TWO ARR (OMBRE.OMBRE2)

MONTREAL QC
 MONTREAL/PIERRE ELLIOTT TRUDEAU INTL
 NAD83