

Table 1: Assay Results Kavursuki Diamond Drill Holes

Hole No.	From (m)	To (m)	Length (m)	Gold (g/t)	Cutoff grade (gold g/t)
90KVD001	9.30	13.75	4.45	0.56	0.5
90KVD002	no assays greater than 0.5g/t Gold				
90KVD003	2.10	3.70	1.60	1.43	0.5
	2.50	3.70	1.20	1.68	1.5
	24.70	25.70	1.00	0.85	0.5
	52.80	54.05	1.25	0.85	0.5
90KVD004	84.40	85.85	1.45	0.50	0.5
90KVD005	5.35	6.60	1.25	12.80	12.0
	30.60	37.40	6.80	1.91	0.5
including	33.30	37.40	4.10	2.65	1.0
including	34.85	35.90	1.05	7.10	7.0
90KVD006	51.45	53.00	1.55	0.65	0.5
90KVD007	11.20	17.20	6.00	1.18	0.5
including	12.70	17.20	4.50	1.41	1.0
including	15.70	17.20	1.50	1.90	1.5
	75.70	78.70	3.00	1.57	0.5
including	77.30	78.70	1.40	2.50	2.0
90KVD008	19.30	25.40	6.10	0.82	0.5
90KVD009	31.90	33.40	1.50	4.00	4.0
	43.15	48.40	5.25	8.18	0.5
including	44.65	48.40	3.75	11.21	5.0
including	45.40	46.80	1.40	19.50	19.5
90KVD010	7.10	8.70	1.60	0.59	0.5
90KVD011	54.80	57.55	2.75	0.70	0.5
	59.50	60.75	1.25	1.65	1.5
	68.60	70.00	1.40	1.15	0.5
	91.70	93.20	1.50	0.56	0.5
90KVD012	no assays greater than 0.5g/t Gold				
10KVD013	6.00	7.00	1.00	0.31	0.3
	8.00	10.90	2.90	0.44	0.3
	13.30	17.30	4.00	0.34	0.3
	21.16	34.50	13.34	1.92	0.3
	22.10	27.60	5.50	2.18	0.5
including	22.10	25.00	2.90	3.20	1.0
and	23.13	24.10	0.97	6.39	6.0
and	23.13	25.00	1.87	4.26	1.5

Table 1: Assay Results Kavursuki Diamond Drill Holes continued...

Hole No.	From (m)	To (m)	Length (m)	Gold (g/t)	Cutoff grade (gold g/t)
	26.00	26.60	0.60	1.89	1.5
	28.50	32.60	4.10	2.97	0.5
including	29.64	32.60	2.96	3.81	1.0
and	29.64	30.70	1.06	6.68	6.0
and	29.64	31.87	2.23	4.61	1.5
10KVD 014	no assays greater than 0.5g/t Gold				
10KVD015	no assays greater than 0.5g/t Gold				
10KVD016	0.00	4.25	4.25	0.54	0.3
including	0.00	2.90	2.90	0.62	0.5
	9.18	18.10	8.92	1.01	0.3
including	9.18	13.10	3.92	1.26	0.5
including	11.20	13.10	1.90	1.95	1.0
and	11.20	12.22	1.02	2.55	1.5
also	15.10	18.10	3.00	1.08	0.5
including	15.10	17.10	2.00	1.34	1.0
	25.05	45.35	20.30	3.28	0.3
including	27.00	33.00	6.00	1.95	0.5
including	28.00	31.22	3.22	3.03	1.5
also	35.44	43.50	8.06	6.49	2.0
including	35.44	37.70	2.26	6.52	5.0
and	38.70	39.77	1.07	5.68	5.0
and	40.35	43.50	3.15	8.55	7.0
including	40.35	41.35	1.00	10.55	10.0
10KVD017	25.50	27.40	1.90	1.30	0.5
including	25.50	26.40	0.90	1.76	1.5
	29.08	30.20	1.12	33.70	33.0
	34.85	36.55	1.70	3.88	3.0
	37.80	47.60	9.80	2.89	0.5
including	37.80	40.45	2.65	2.88	2.0
and	41.40	44.50	3.10	4.40	3.0
	48.27	50.00	1.73	2.57	1.5
10KVD018	1.00	2.00	1.00	1.70	1.5
	27.00	27.90	0.90	0.54	0.5
	29.15	30.15	1.00	0.86	0.5
	33.50	36.82	3.32	0.84	0.5
	37.85	39.85	2.00	1.51	0.5
including	38.90	39.85	0.95	2.11	1.5
	42.73	46.10	3.37	0.56	0.5
11KVD 19	6.00	7.10	1.10	0.53	0.5
	11.10	16.35	5.25	9.45	0.5
including	11.10	12.00	0.90	13.30	13.0
and	13.00	15.60	2.60	13.74	7.0
	25.85	26.80	0.95	1.95	1.5

Table 1: Assay Results Kavursuki Diamond Drill Holes continued...

Hole No.	From (m)	To (m)	Length (m)	Gold (g/t)	Cutoff grade (gold g/t)
11KVD 20	5.90	7.90	2.00	3.90	1.5
	9.85	12.70	2.85	0.73	0.5
	13.70	16.60	2.90	1.14	0.5
	17.60	18.55	0.95	0.56	0.5
	24.60	29.60	5.00	0.82	0.5
	30.55	31.50	0.95	0.30	0.5
	32.45	33.45	1.00	1.47	1.0
	35.40	43.50	8.10	4.06	0.5
including	35.40	38.25	2.85	6.21	3.0
including	36.40	37.30	0.90	12.05	12.0
and	39.15	43.50	4.35	3.33	2.0
11KVD 21	5.25	7.05	1.80	0.82	0.5
	8.05	12.00	3.95	1.70	0.5
including	9.00	10.00	1.00	5.04	5.0
	16.50	19.60	3.10	0.72	0.5
	20.60	23.35	2.75	0.85	0.5
	30.10	32.00	1.90	0.66	0.5
	34.50	36.00	1.50	1.09	1.0

Note: Drill holes 90KVD001 to 90KVD012 have been previously released.
True width approximates 70% to 95% of length of intersection

Kavursuki Hole Location Data

Hole No.	Collar Co-Ordinates		Azimuth (degrees)	Inclination (degrees)	Depth (m)
	Easting (m)	Northing (m)			
90KVD001	394875	9490351	90	-45	157.65
90KVD002	394858	9490358	90	-60	84.40
90KVD003	395135	9490719	90	-45	84.50
90KVD004	395106	9490729	90	-45	114.00
90KVD005	395008	9490500	90	-45	85.60
90KVD006	394927	9490464	90	-45	84.80
90KVD007	395071	9490617	90	-45	109.10
90KVD008	395403	9490950	90	-45	112.55
90KVD009	395227	9490834	90	-45	93.85
90KVD010	395268	9490896	90	-45	73.70
90KVD011	395222	9490839	90	-60	114.55
90KVD012	394747	9490230	90	-45	145.65
10KVD013	395062	9490529	90	-60	46.50
10KVD014	395104	9490695	90	-55	51.00
10KVD015	395224	9490696	270	-50	50.00
10KVD016	394971	9490464	90	-50	51.00
10KVD017	394969	9490464	90	-65	50.00
10KVD018	394906	9490432	90	-50	52.50
11KVD019	395039	9490496	90	-60	45.10
11KVD020	395045	9490537	90	-50	50.90
11KVD021	395043	9490537	90	-65	50.50

Table 2: Kavursuki Trench Assay Summary
Mineralised intervals >0.5g/t Au

Trench	Length (m)	Gold (g/t)	Cut-off grade (gold g/t)
TR1 to 6	16	2.79	0.5
incl.	2	2.58	2.0
and	4	8.05	7.0
	4	1.33	0.5
incl.	2	1.82	1.5
	2	0.91	0.5
	12	0.94	0.5
	2	7.31	7.0
	2	1.73	1.5
	4	9.41	2.0
incl.	2	16.55	16.0
	2	0.65	0.5
	4	13.72	0.5
incl.	2	26.50	26.0
	18	2.06	0.5
incl.	6	2.43	1.5
and	2	2.86	2.0
and	4	2.59	1.5
	8	2.30	0.5
incl.	4	3.64	1.5
	2	0.94	0.5
	2	0.68	0.5
	2	0.69	0.5
	2	0.63	0.5
	8	1.76	0.5
incl.	6	2.15	1.5
	2	0.65	0.5
	2	0.63	0.5
	2	0.53	0.5
	28	19.42	0.5
incl.	12	42.15	1.5
incl.	4	118.50	100.0
and	2	8.01	8.0
and	6	2.59	1.5
	4	1.05	0.5

Table 2: Kavursuki Trench Assay Summary continued...
 Mineralised intervals >0.5g/t Au

Trench	Length (m)	Gold (g/t)	Cut-off grade (gold g/t)
TR7	2	0.62	0.5
	2	0.61	0.5
	4	1.08	0.5
TR8	4	2.25	0.5
	2	3.95	3.0
	4	1.57	0.5
	2	2.26	2.0
	2	1.34	1.0
TR9	2	0.53	0.5
	2	1.03	1.0
	2	2.15	2.0
	4	1.08	0.5
	2	1.57	1.5
	2	2.03	2.0
	2	0.59	0.5
TR10	2	1.00	1.0
	4	0.72	0.5
TR11	2	1.05	1.0
	2	2.34	2.0
	2	1.52	1.5
TR12	10	0.92	0.5
	10	1.49	0.5
	2	3.29	3.0
	32	2.17	0.5
	2	3.97	3.0
	2	3.40	3.0
	10	3.83	1.5
	2	7.78	7.0
TR13	2	0.53	0.5
	8	0.97	0.5

Table 2: Kavursuki Trench Assay Summary continued...
Mineralised intervals >0.5g/t Au

Trench	Length (m)	Gold (g/t)	Cut-off grade (gold g/t)
TR14	12	1.73	0.5
incl.	2	1.86	1.5
and	4	3.10	2.0
	14	10.21	1.5
incl.	4	26.13	17.0
	2	0.60	0.5
	2	0.58	0.5
	2	0.72	0.5
	2	0.61	0.5
	2	0.66	0.5
	2	0.72	0.5
TR15	2	1.31	1.0
	2	0.68	0.5
	2	0.64	0.5
	4	0.73	0.5
	2	0.54	0.5
	2	1.32	1.0
	8	0.93	0.5
	2	1.53	1.5
TR16	2	1.41	1.0
TR17	2	5.77	5.0
TR18	2	1.30	1.0
TR 19	6	0.89	0.5
TR 20	6	1.12	0.5
incl.	2	1.65	1.5
	20	8.08	0.5
incl.	2	16.65	16.0
and	14	8.84	1.5
incl.	4	20.35	16.0
TR 21	2	1.61	1.5
	4	1.26	1.0
	12	12.29	2.0
incl.	6	18.98	12.0
	18	3.62	0.5
incl.	8	4.82	4.0
and	6	3.85	1.5
incl.	2	7.93	7.0

Table 2: Kavursuki Trench Assay Summary continued...
Mineralised intervals >0.5g/t Au

Trench	Length (m)	Gold (g/t)	Cut-off grade (gold g/t)
TR22	2	2.18	2.0
	2	0.76	0.5
	6	2.04	0.5
incl.	4	2.67	1.5
	6	4.10	0.5
incl.	4	5.86	1.5
and	2	9.91	9.0
TR23	2	2.95	2.0
	2	0.61	0.5
	4	0.66	0.5
	4	2.21	1.0
incl.	2	3.18	3.0
	2	4.13	4.0
TR 12dup	38	5.20	0.5
incl.	24	7.24	1.5
incl.	4	21.15	16.0
	6	2.65	2.0
	4	0.54	0.5
TR E	6	0.59	0.5
TR F	4	12.02	0.5
incl.	2	23.50	23.0
TR G	4	1.63	0.5
incl.	2	2.70	2.0
	2	4.00	4.0
	6	0.82	0.5
	8	0.88	0.5
TR H	No assays greater than 0.5g/t Gold		
TR I	6	0.84	0.5
TR J	2	0.77	0.5
TR K	4	0.86	0.5

Note: Trenches 1 to 6 are short trenches located near Hole 19. Locations not shown on plan due to scale.

Figure 1

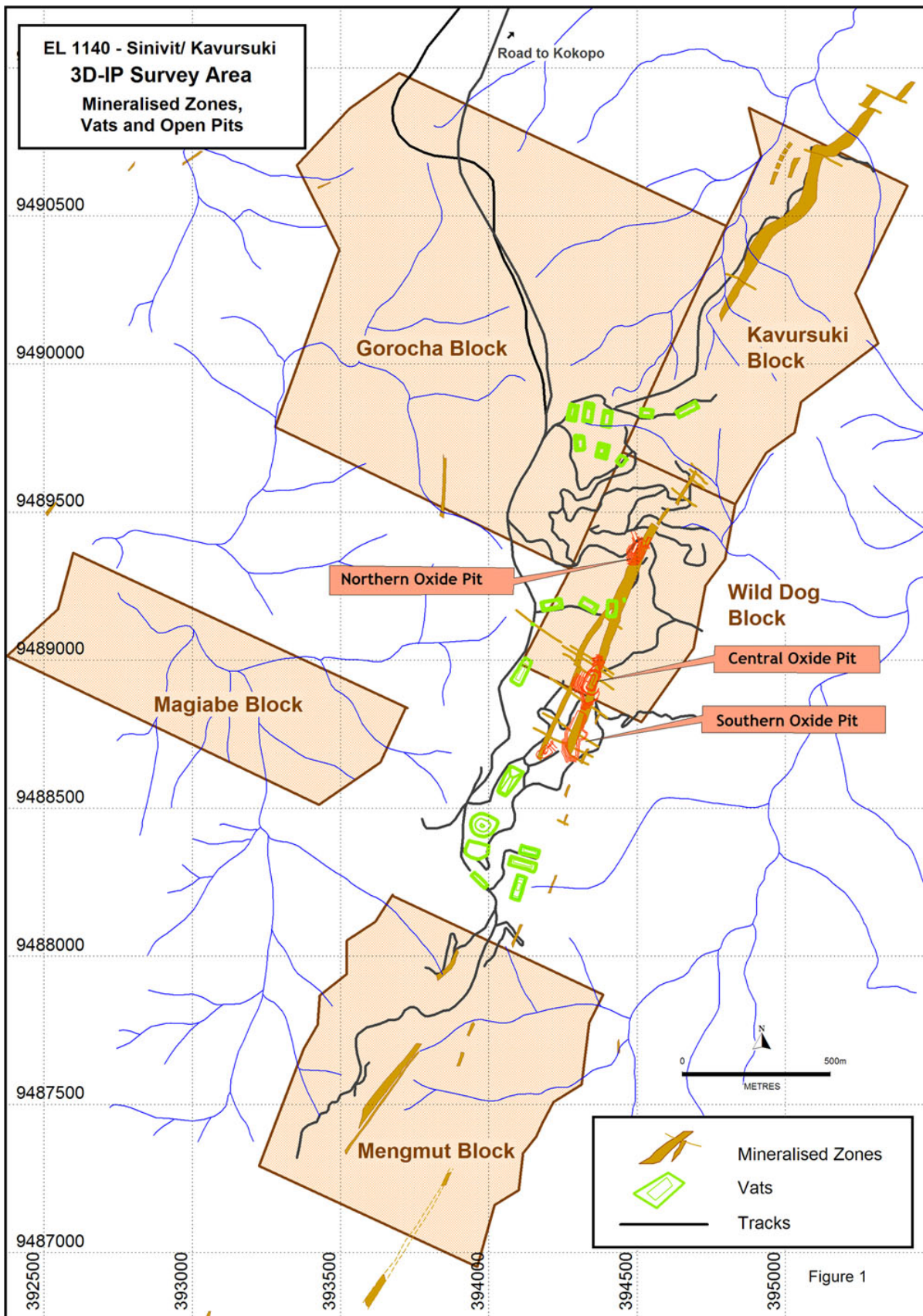


Figure 2

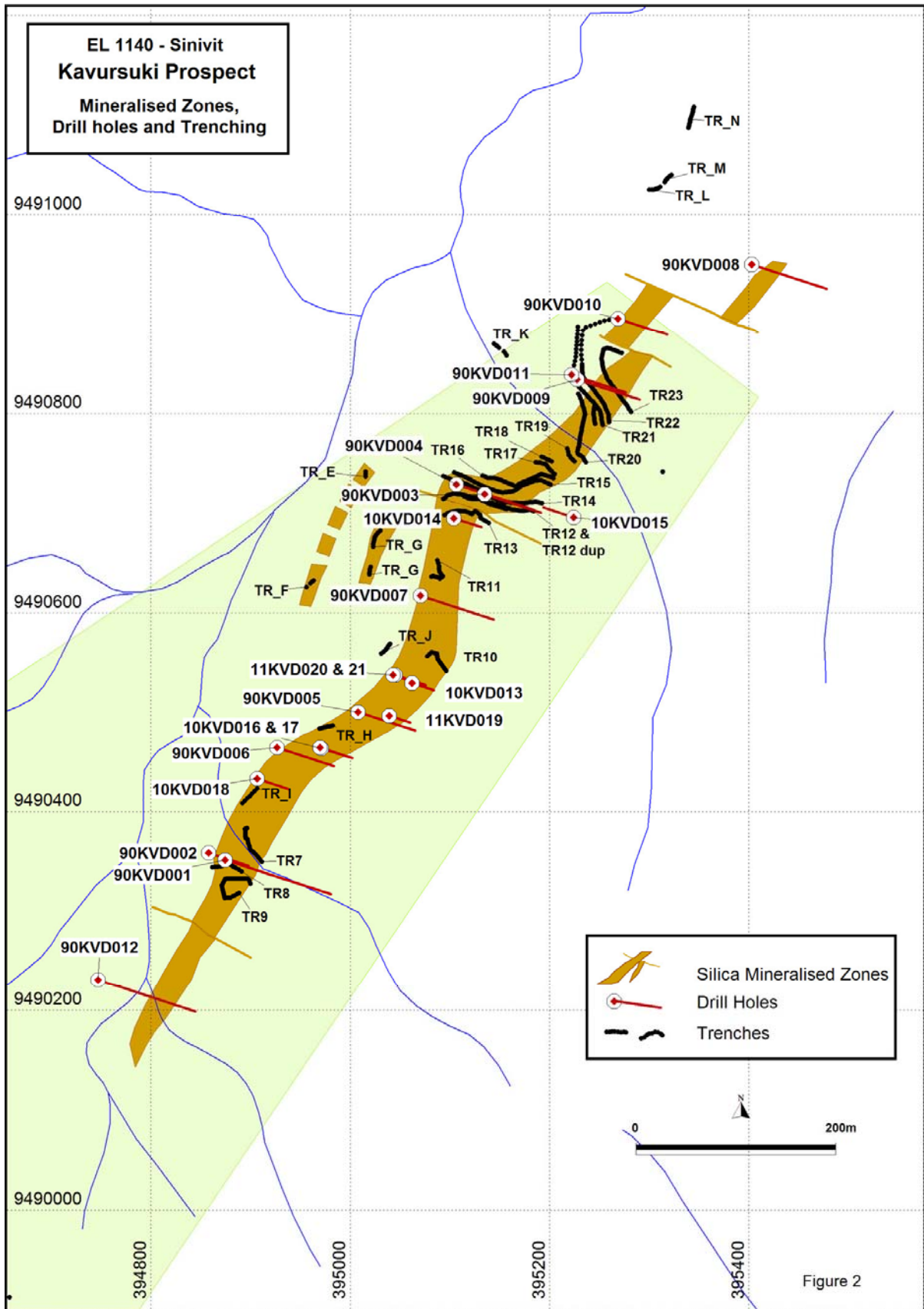


Figure 2

Figure 3

