



Goldstorm Project
Northwestern Ontario

TSXV:NK

Disclaimer

Forward-Looking Information

This presentation contains certain “forward-looking information”. All statements, other than statements of historical fact, that address activities, events or developments that New Klondike Exploration Ltd. (the “Company” or “New Klondike”) believes, expects or anticipates will or may occur in the future including, without limitation, statements relating to the Company’s expected exploration plans and strategies, and references to potential mineralization and resources, are forward-looking statements. These forward-looking statements reflect the current expectations or beliefs of the Company based on information currently available to the Company. Certain information contained herein is based on information derived from publically available sources that have not been independently verified. No representation or warranty is made as to the accuracy, completeness or reliability of this information. Forward-looking statements are subject to a number of significant risks and uncertainties and other factors that may cause the actual results of the Company to differ materially from current expectations, and even if such actual results are realized or substantially realized, there can be no assurance that they will have the expected consequences to, or effects on the Company. Factors that could cause actual results or events to differ materially from current expectations include, but are not limited to, the failure of the Company to execute its proposed exploration plans and strategies as indicated herein, risks related to the exploration stage of the Goldstorm Project, equity markets, uncertainties relating to the availability and costs of financing needed in the future, the uncertainties involved in interpreting exploration results and other geological data, other risks involved in the mineral exploration business and general business and economic uncertainties.

Any forward-looking statement speaks only as at the date on which it is made and, except as may be required by applicable securities laws, the Company disclaims any intent or obligation to update any forward-looking statement, whether as a result of new information, future events or results or otherwise. Although the Company believes that the assumptions inherent in the forward-looking statements are reasonable, forward-looking statements are not guarantees of future performance and accordingly undue reliance should not be put on such statements due to the inherent uncertainty therein.

This presentation has been prepared by the Company and is being delivered for informational purposes only.

February 2013

New Klondike Objectives

- Gold Projects in Stable Political Environments
- Projects with Potential for World Class Deposits of Gold and/or Base Metals
- Projects in Under-explored or Overlooked Gold Camps
- Capitalize on Team of Seasoned Management and Explorers
- Generate Projects having Excellent Potential with an Appealing Entry Level for Investors

Ontario Location Map



Geological Features Common To Major Gold Deposits

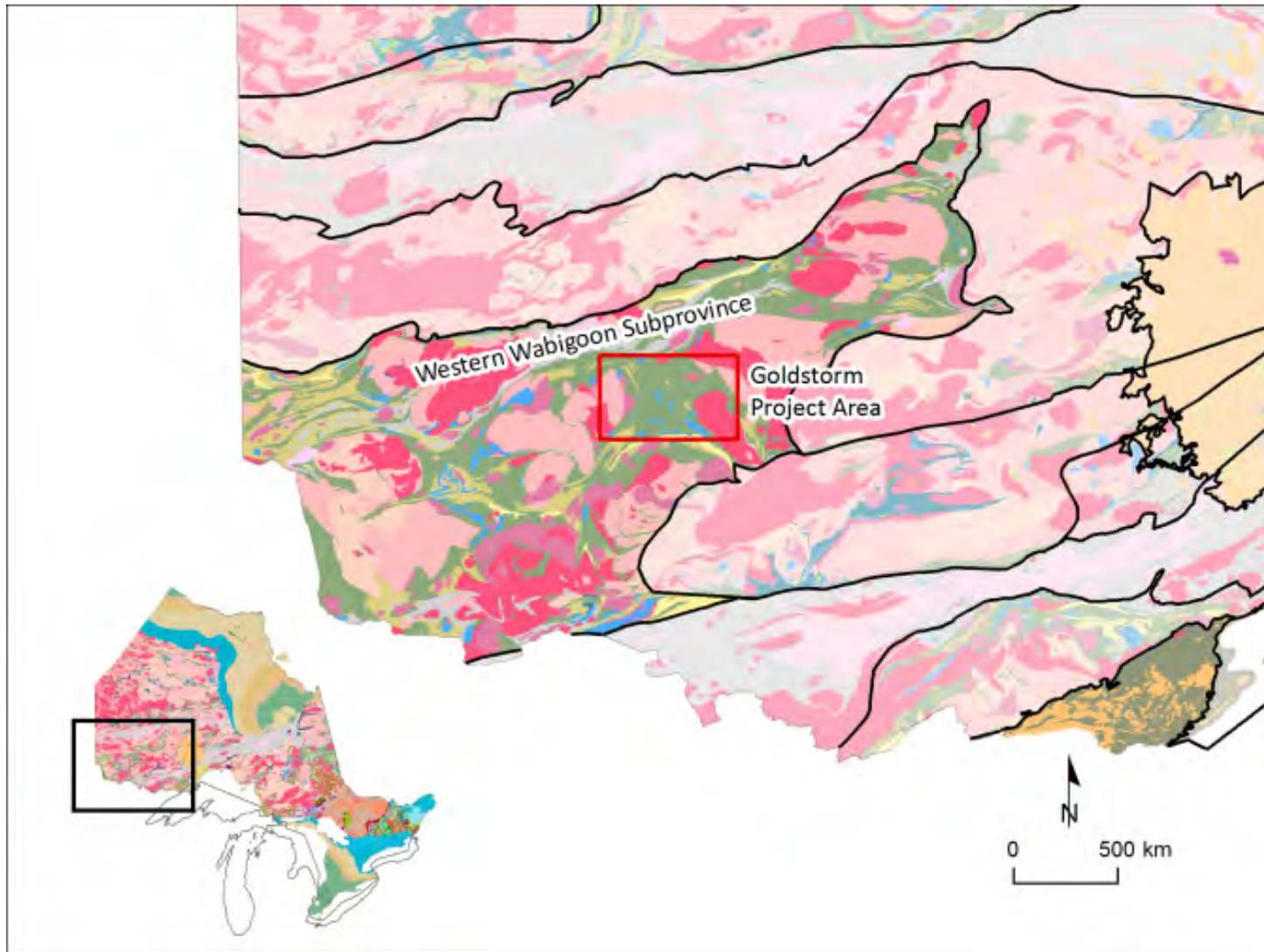
- Regional fault structures
- Timiskaming-type sediments
- Major unconformity
- Mafic to ultramafic sills and dikes
- Pervasive alteration
- Known Au mineralization

**All of these features are present on
the Goldstorm Project**

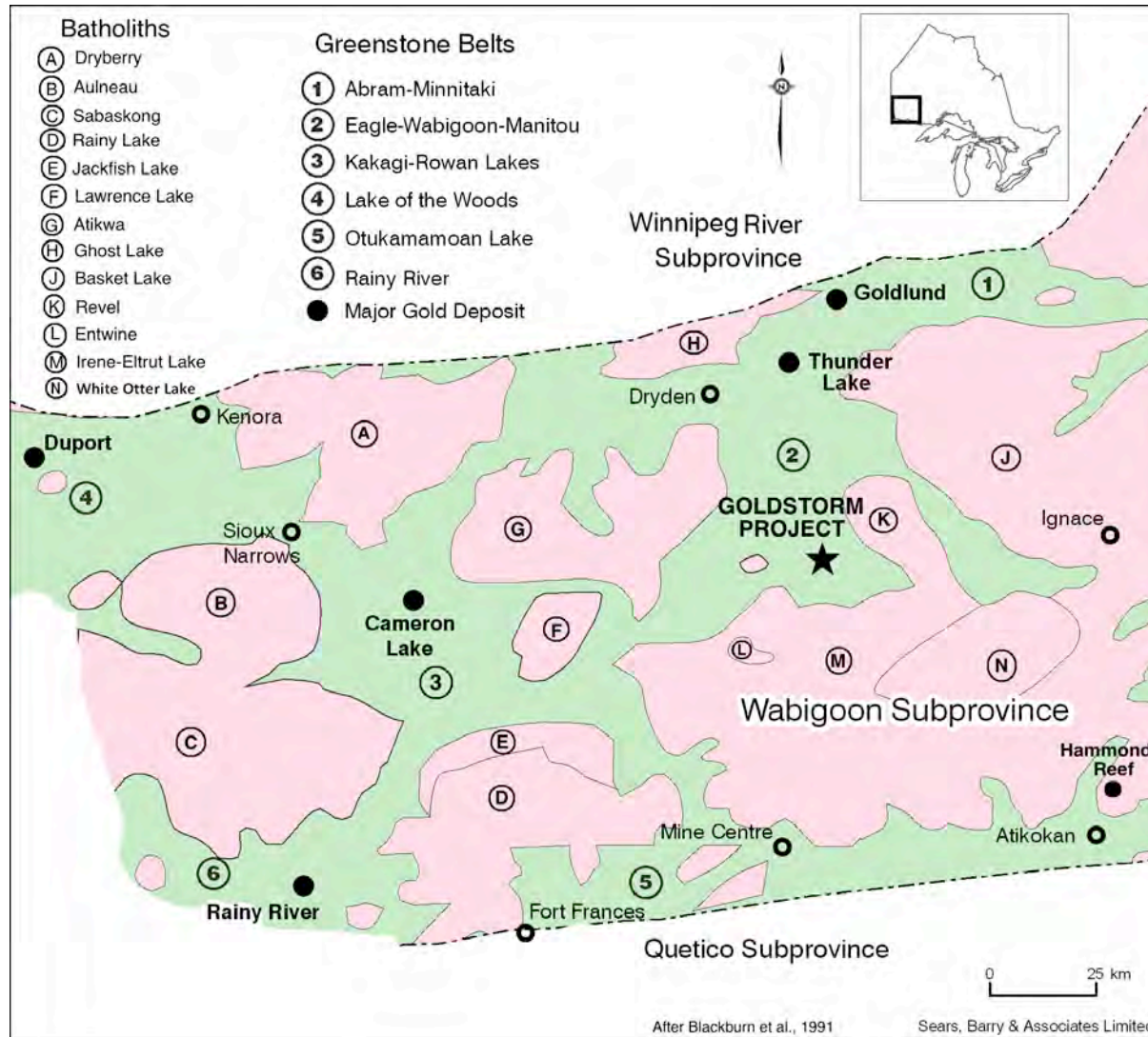
A major land position in the Emerging Mining District of NW Ontario

- Current Property approximately 232 sq. km.
- 109 Unpatented Mining Claims (1,443 Units).
- Five regional scale gold exploration targets.
- 12 documented gold prospects (OGS Files).
- Numerous EM conductors; known Base-Metal Occurrence and anomalous base metals.
- Anomalous lake sediment geochemistry (Au, Ag, Cu, indicator elements).

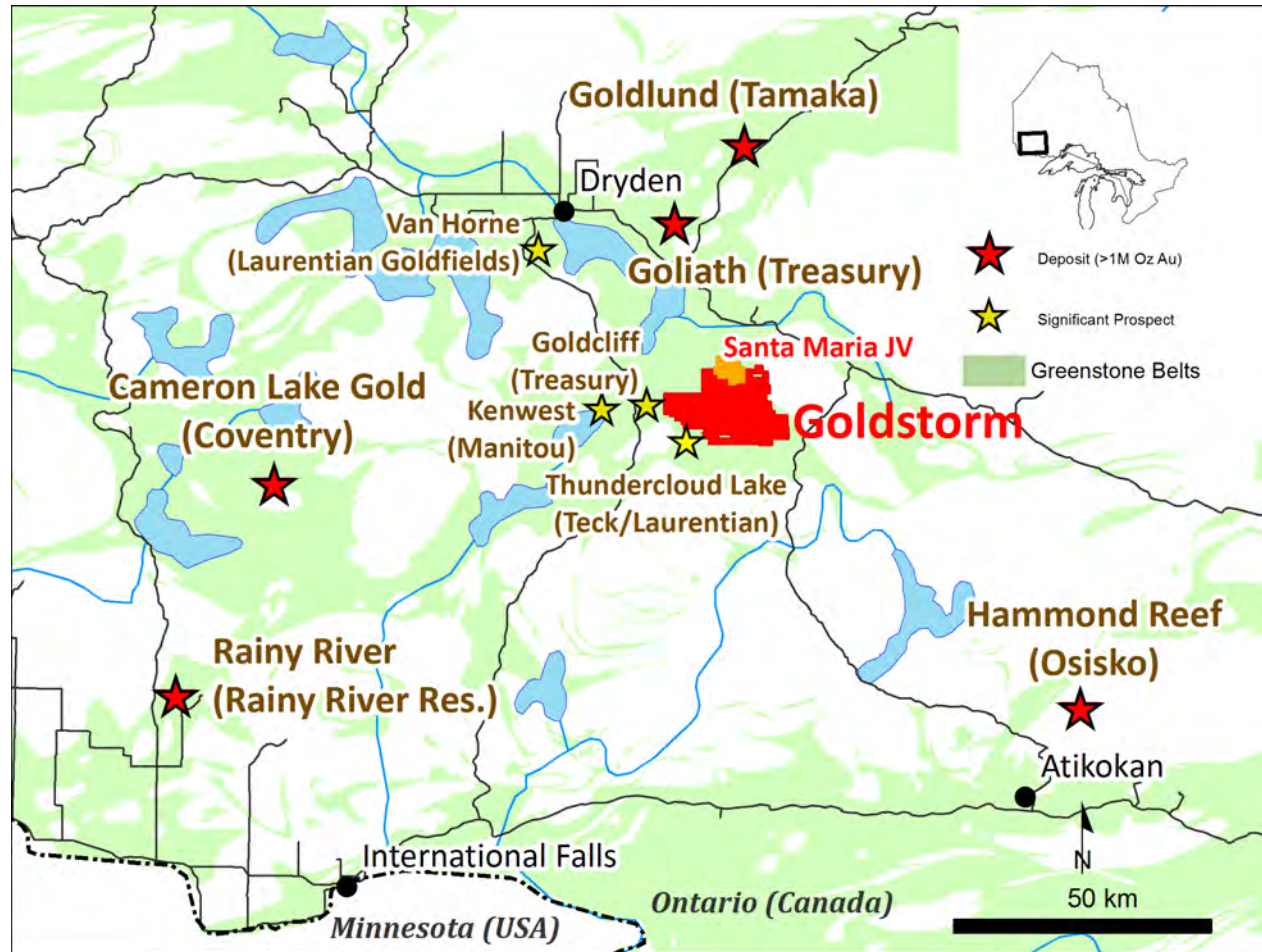
Western Wabigoon Subprovince



Wabigoon Greenstone Belts



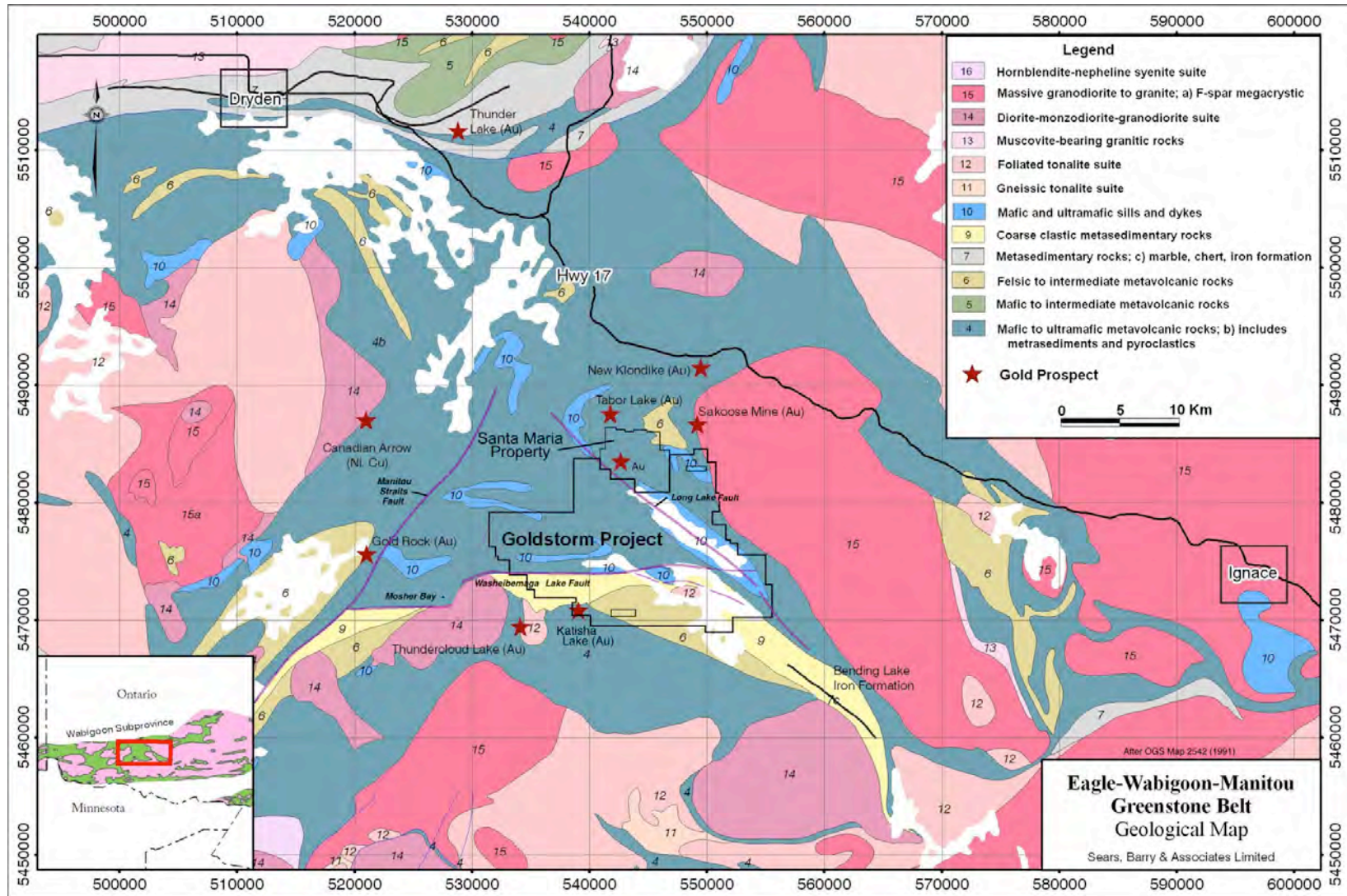
Regional Map Showing Gold Deposits and Selected Projects



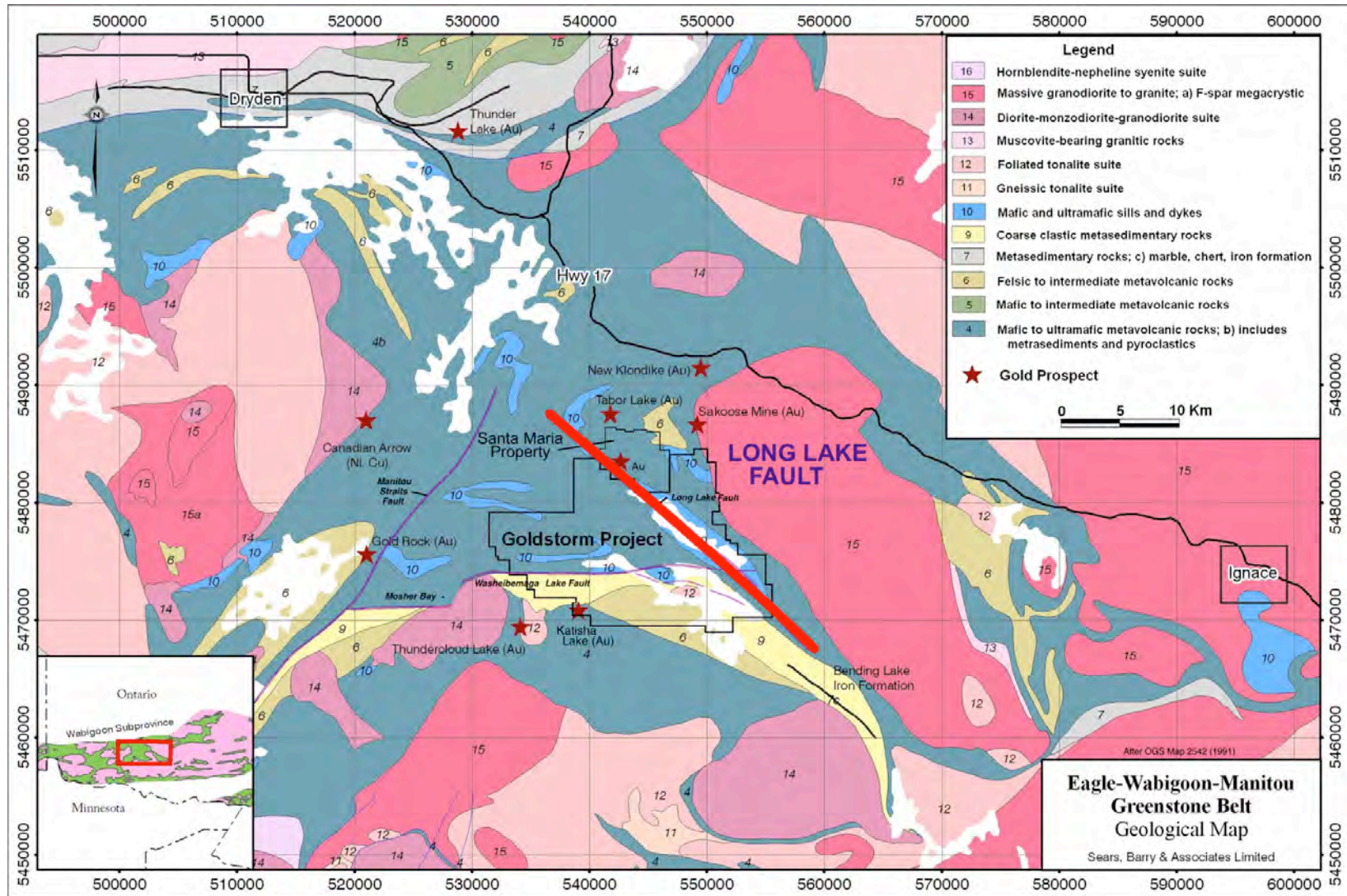
Neighbouring Gold Deposits

- Osisko Mining Corporation (Company website, Feb 24, 2013)
 - **Hammond Reef (Atikokan Area)**
 - NI 43-101 compliant resource at a 0.5 g/t cut-off grade containing 7.18 million ounces of gold in the Measured, Indicated and Inferred categories combined (3,590,000 oz in the Measured category, 1,830,000 oz in the Indicated category and 1,750,000 oz in the Inferred category)
- Rainy River Resources Ltd. (Company website, Feb 24, 2013)
 - **Rainy River Gold Project (Rainy River Area)**
 - NI 43-101 compliant resource at the 0.35 g/t cut-off grade (pit) & 2.5 g/t (U.G.) containing 8.44 million ounces of gold in the Measured, Indicated and Inferred categories combined (1,182,000 oz in the Measured category, 4,985,000 oz in the Indicated category and 2,280,000 oz in the Inferred category)
- Treasury Metals Incorporated (Company website, Feb 24, 2013)
 - **Goliath Gold Project (Historic Thunder Lake Gold Project, Dryden Area)**
 - NI 43-101 compliant resource at the 0.30 g/t cut-off grade (pit) & 1.5 g/t cut-off grade (U.G.) containing 1.7 million ounces of gold in the Indicated and Inferred categories combined (810,000 oz in the Indicated category and 900,000 oz in the Inferred category)
- Coventry Resources Inc. (Company website, Feb 24, 2013)
 - **Cameron Gold Project (Sioux Narrows Area)**
 - NI 43-101 compliant resource at 1.0 g/t cut-off grade containing 1.4 million ounces of gold in the Inferred and Indicated categories combined (567,000 oz in the Indicated category and 830,000 oz in the Inferred category)
- Tamaka Gold Corporation (Company website, Feb 24, 2013)
 - **Goldlund Project (Dryden Area)**
 - NI 43-101 compliant resource at 0.5 g/t cut-off grade containing 1.0 million ounces of gold in the Measured, Indicated and Inferred categories combined (233,700 oz in the Measured category, 143,300 oz in the Indicated category and 628,000 oz in the Inferred category)

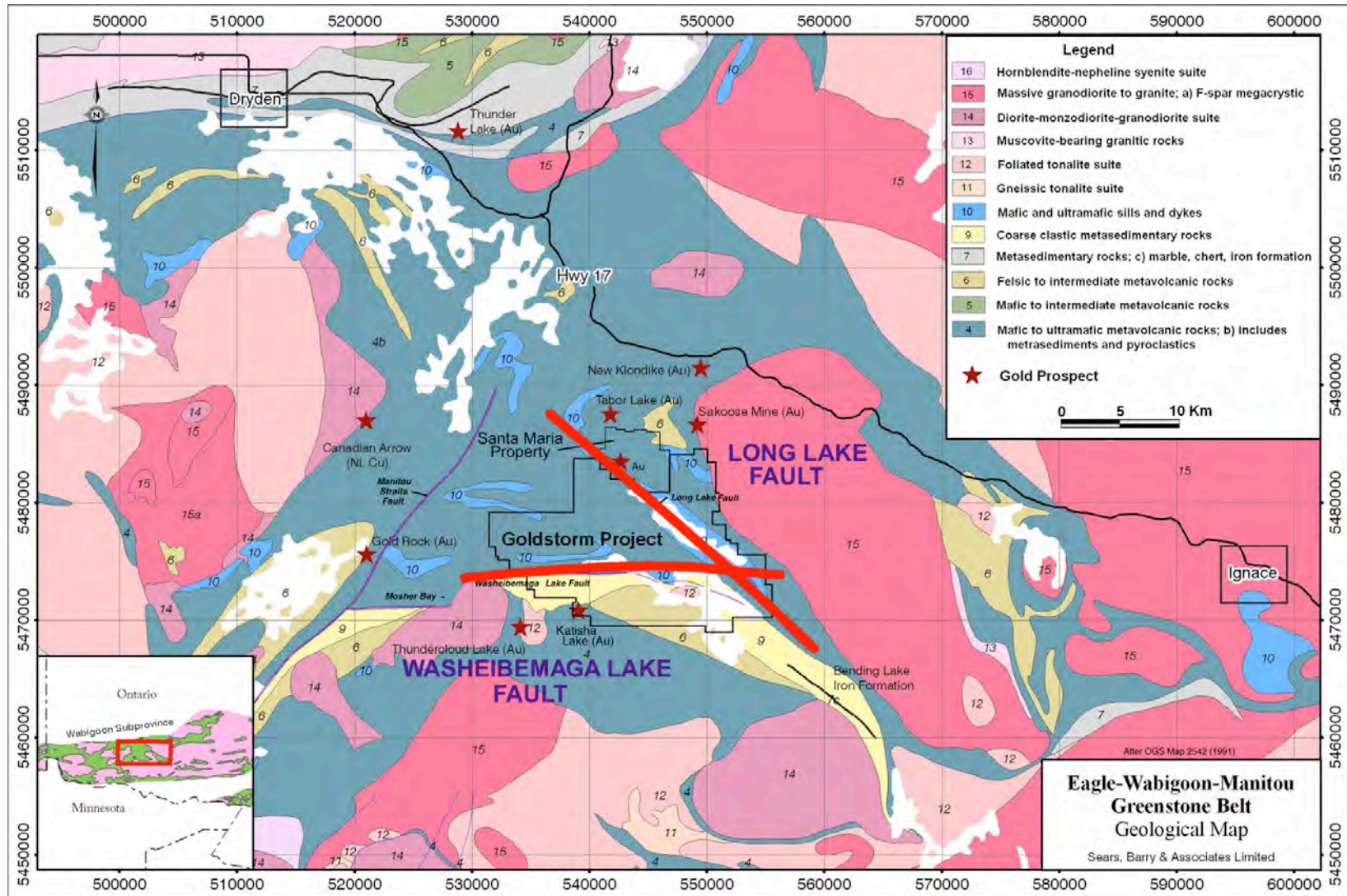
Regional Geology & Structures



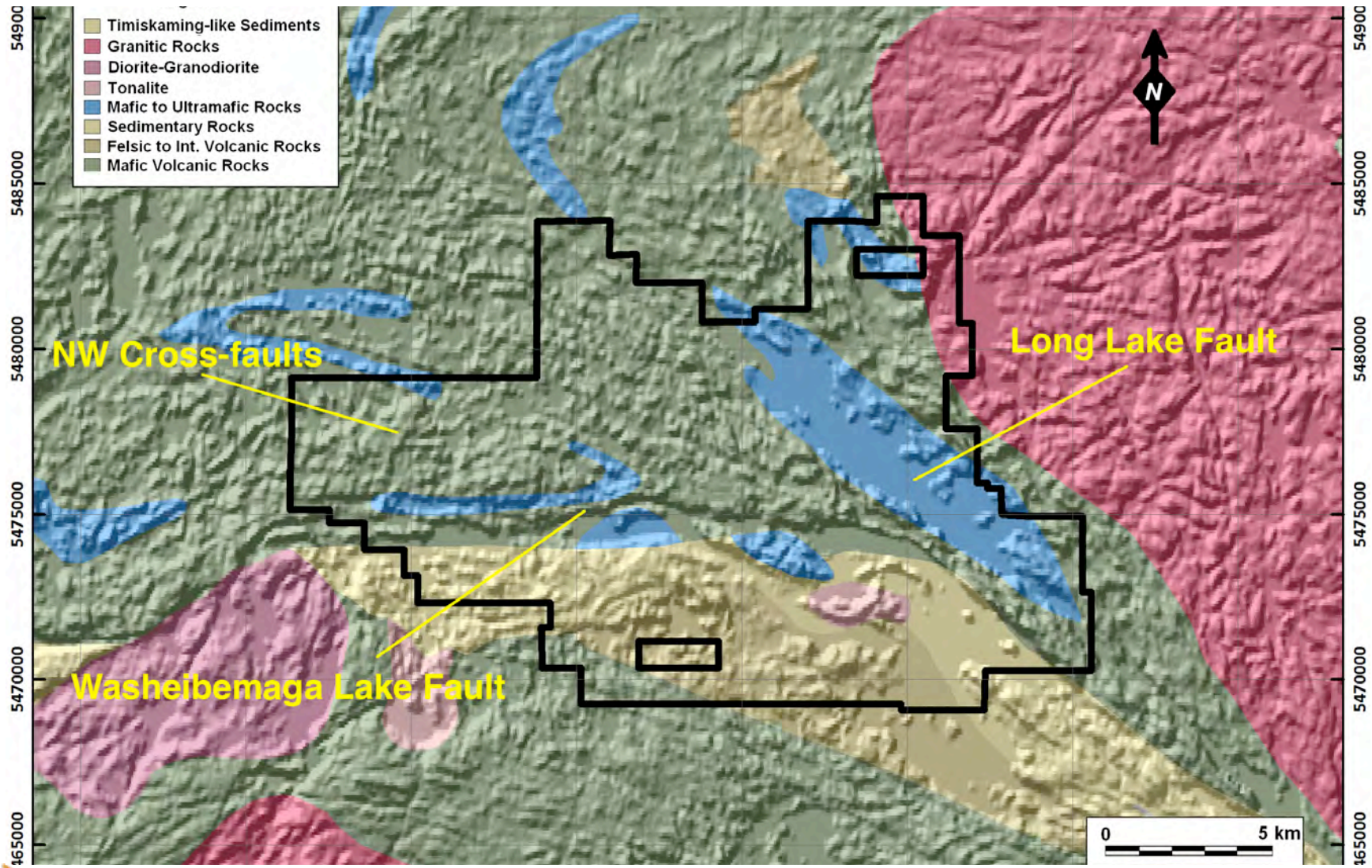
Long Lake Fault



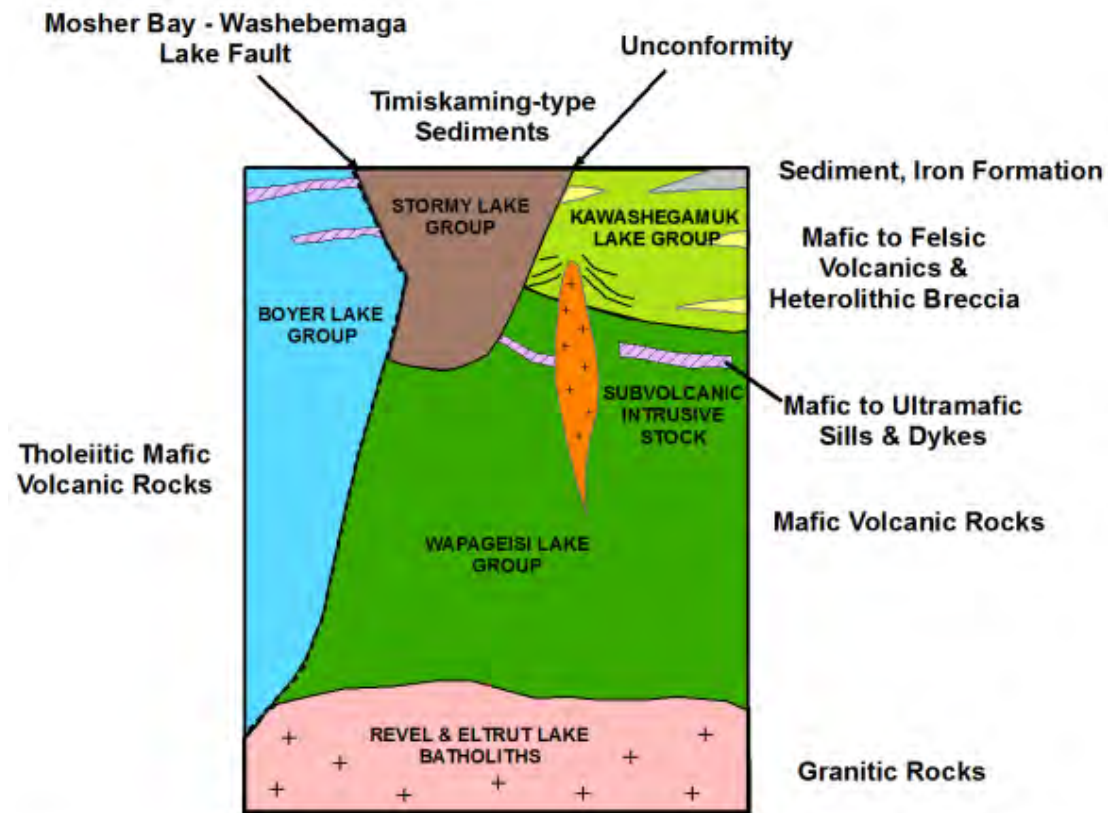
Washeibemaga Lake Fault



Shuttle Radar & Structures



Schematic X-Section & Targets



Looking generally east - no scale implied

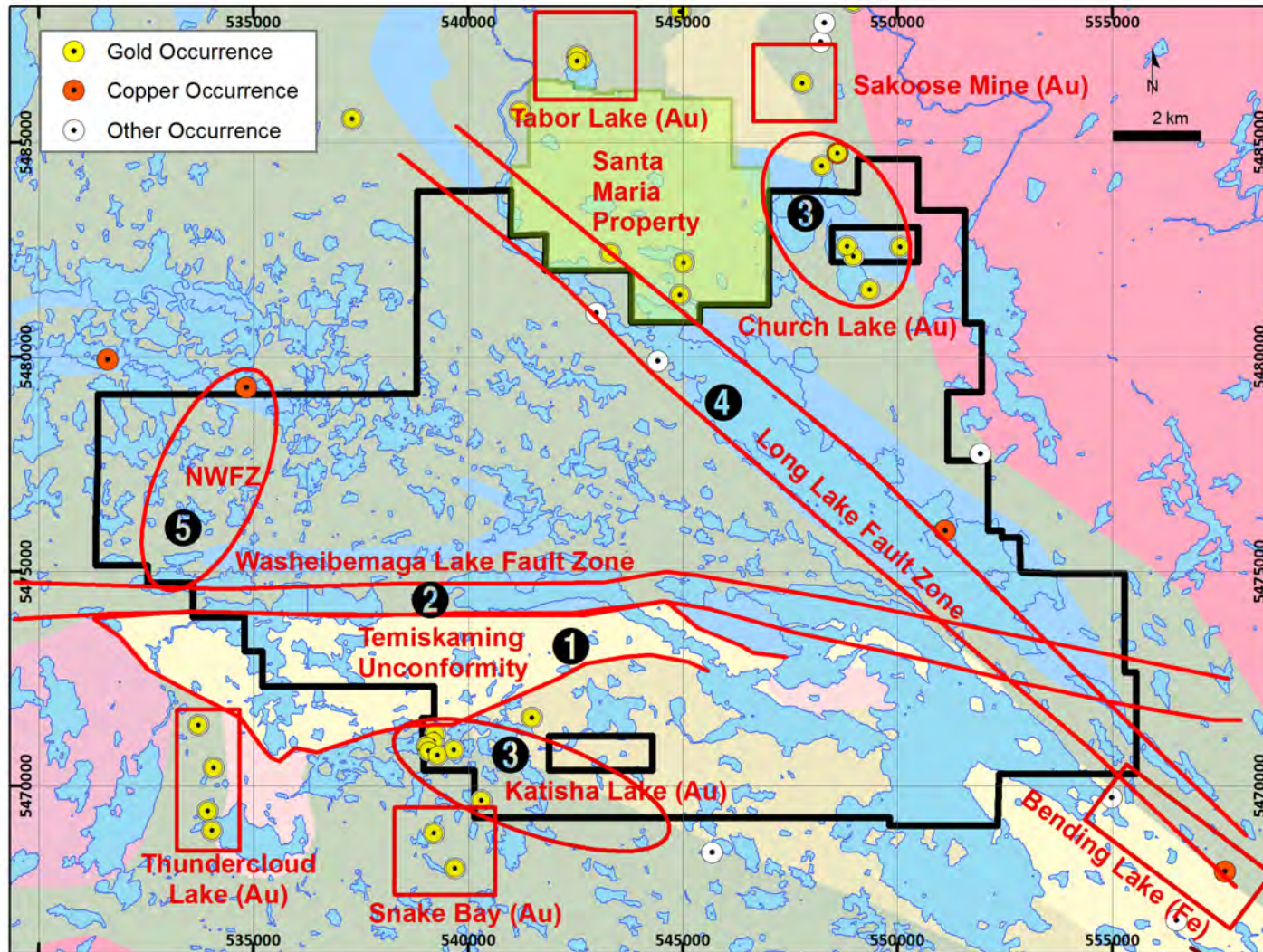
Sears, Barry & Associates Limited, 2012

Goldstorm Target Areas

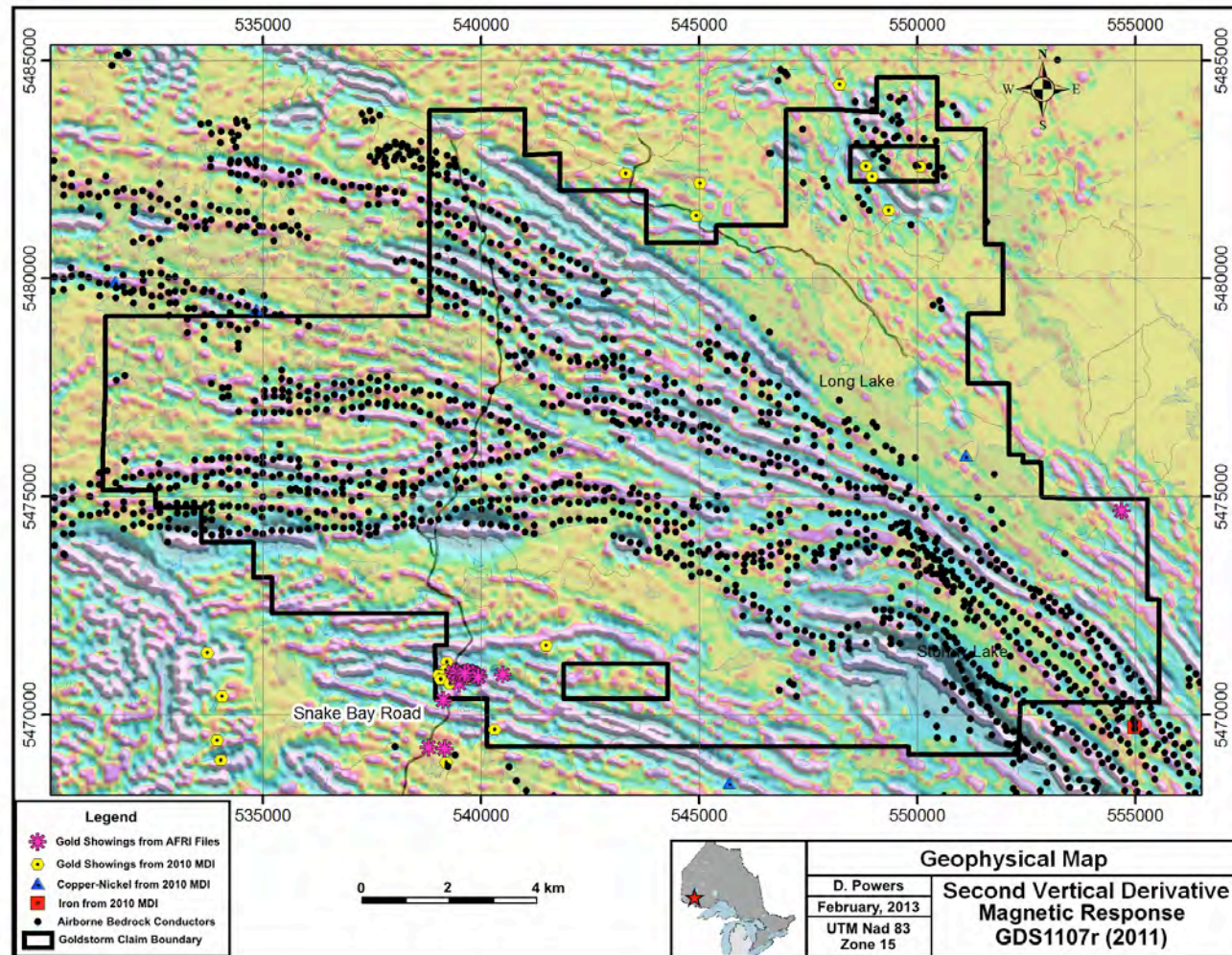
Five Regional Scale Targets on Property

- 1) Timiskaming-type Unconformity
- 2) Washeibemaga Lake Fault Zone
- 3) Mafic to Ultramafic Sills
- 4) Long Lake Fault Zone
- 5) NW Cross-Faults

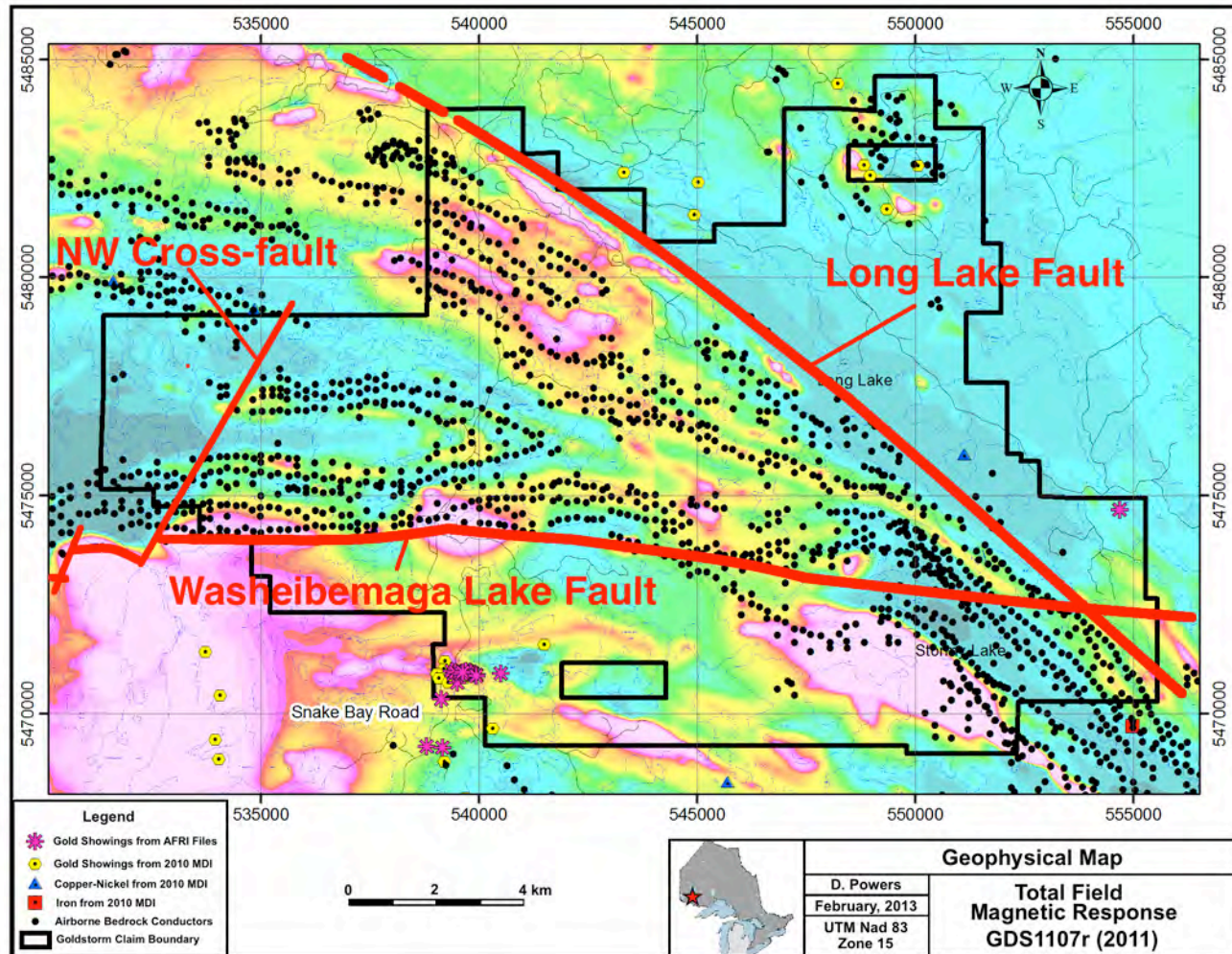
Occurrences and Targets



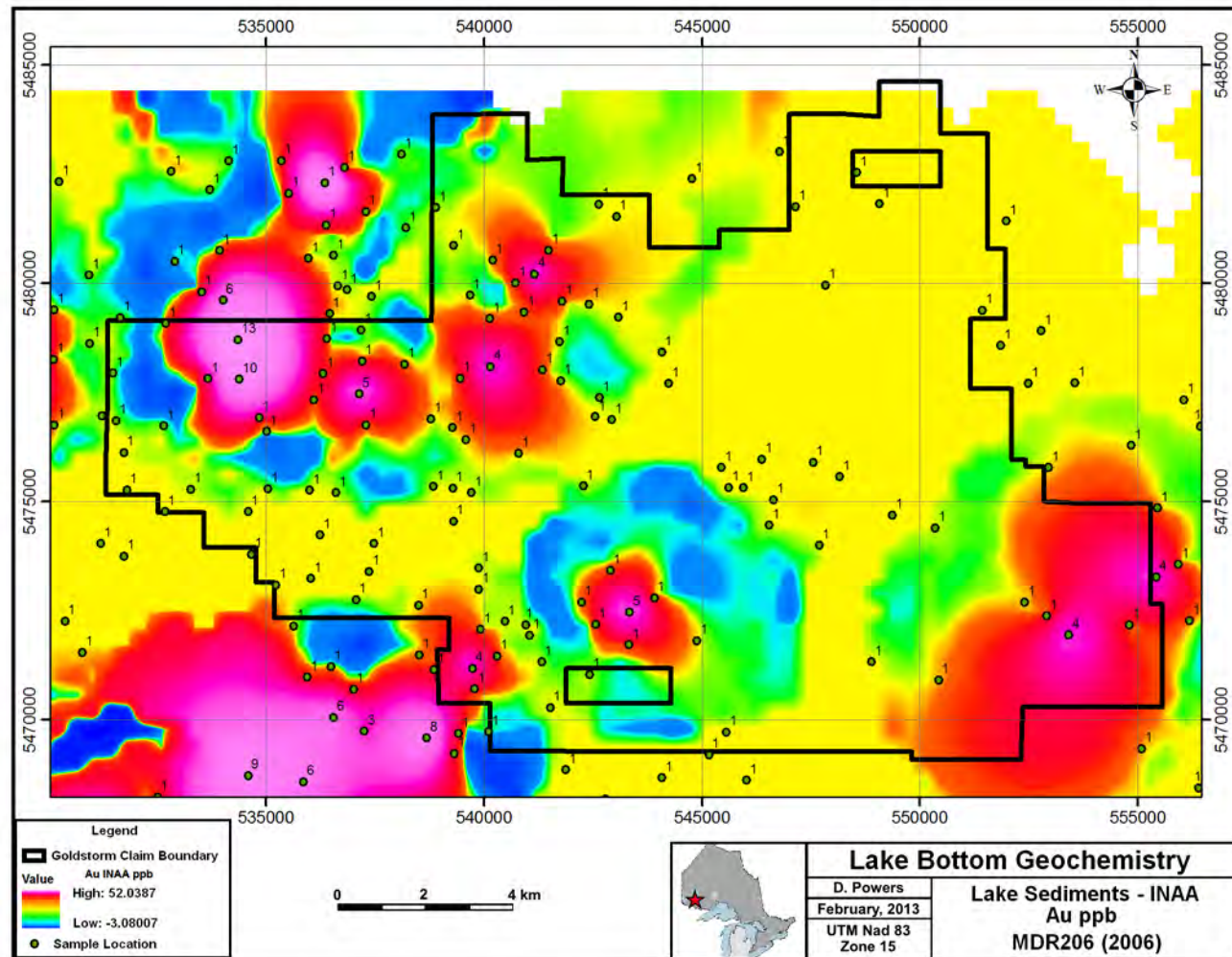
Mag/EM - Complex Structure



Mag/EM Showing Major Faults



Gold in Lake Sediments



Work Program and Timing

- Data Compilation Ongoing
- Airborne Geophysical Data Interpretation in Progress; New Detailed Surveys over Selected Targets Planned for Near Term
- Trench and Prospect Sampling, Ground Surveys, Drill Target Selection to Commence in May

Geological Advisors

- The concept for the Goldstorm Project was introduced to New Klondike by Mr. David Powers, B.Sc. (Honours) Geology, P.Geo. Mr. Powers has operated his own independent geological consulting practice since 2006; he has more than 37 years of experience in mineral exploration and development. Prior to that he held various positions during his 12 years with Placer Dome Inc., starting as an Exploration Geologist at their Musselwhite Mine prior to a positive feasibility study and production decision, and later as Senior Geologist in Canada managing exploration programs until the company was acquired by Barrick in 2006. He spent the first 17 years of his career with Noranda where he held various roles from Project Geologist to Chief Geologist at their Eagle River project.
- Mr. Seymour M. Sears, B.A., B.Sc., P.Geo. is a principal in Sears, Barry & Associates Ltd. a geological consulting firm and he is a director of New Klondike. He has more than 35 years of international experience in the mineral exploration field exploring in a great variety of geological environments in Canada, USA, Mexico, Peru, Chile, Ecuador, Columbia, Ireland and United Kingdom for precious metals, base and specialty metals, gem stones and numerous other commodities. Through his consulting practice he provides due diligence, work planning and supervision, quality assurance and control and the provision of geological and exploration expertise to his clients. He spent the first 10 years of his career in various supervisory and managerial roles with Amax Minerals Exploration.
- The technical information in this presentation has been reviewed by Mr. Seymour M. Sears, B.A., B.Sc., and P.Geo.

New Klondike – Corporate Overview

- Trading Symbol: TSXV:NK
- Shares o/s: 17,342,845
 - Fully diluted: 20,863,345
- Market Capitalization (FD) approx. \$2 million
- Contact:
 - Michael Coulter, President
120 Eglinton Avenue East, Suite 1000
Toronto, ON M4P 1E2
 - Tel. (416) 368-3332
 - E-Mail: MCoulter@NewKlondike.com
- Technical Advisors:
 - Sears, Barry & Associates Ltd.
 - David Powers Geological Services