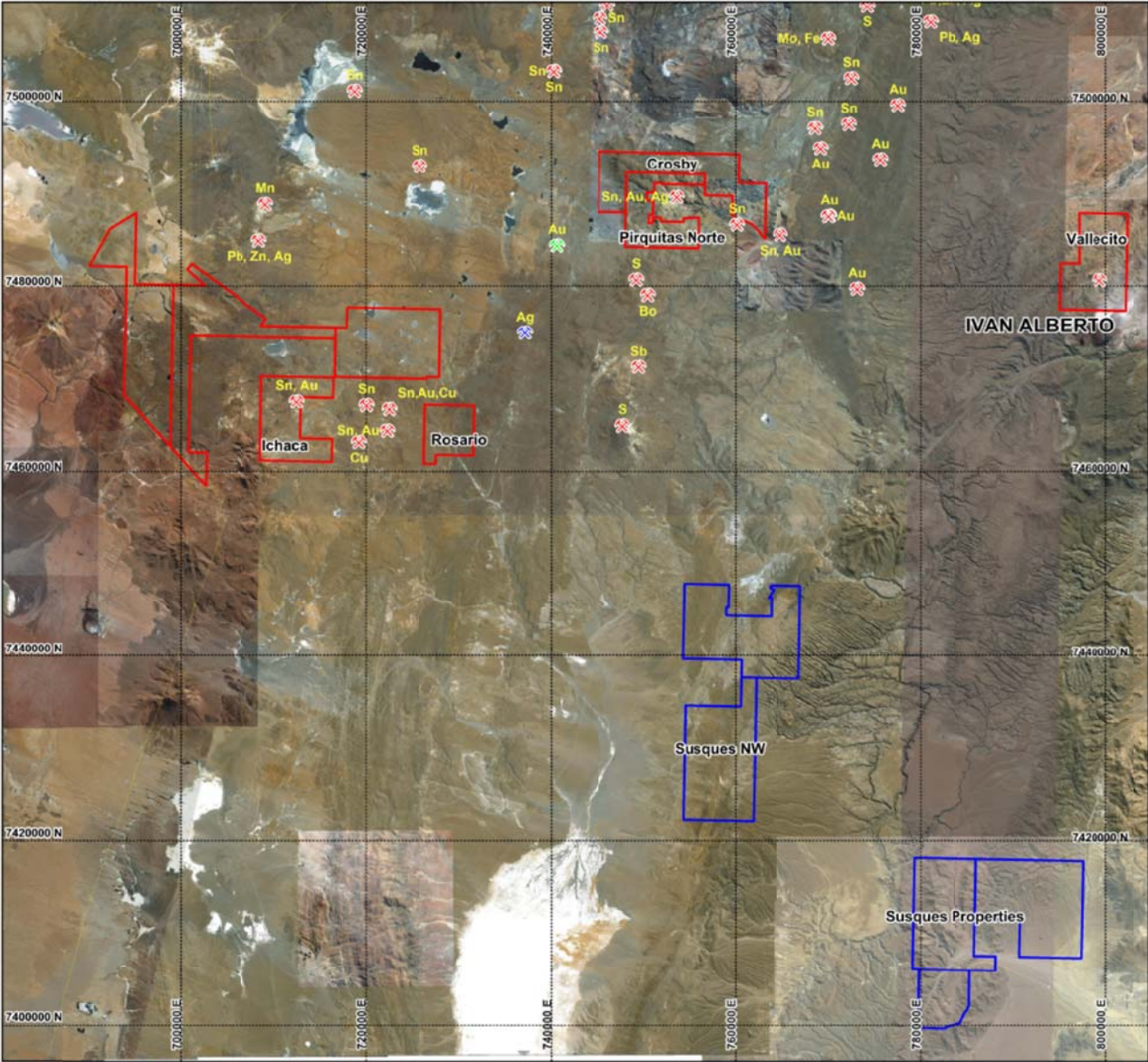
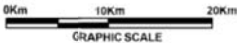


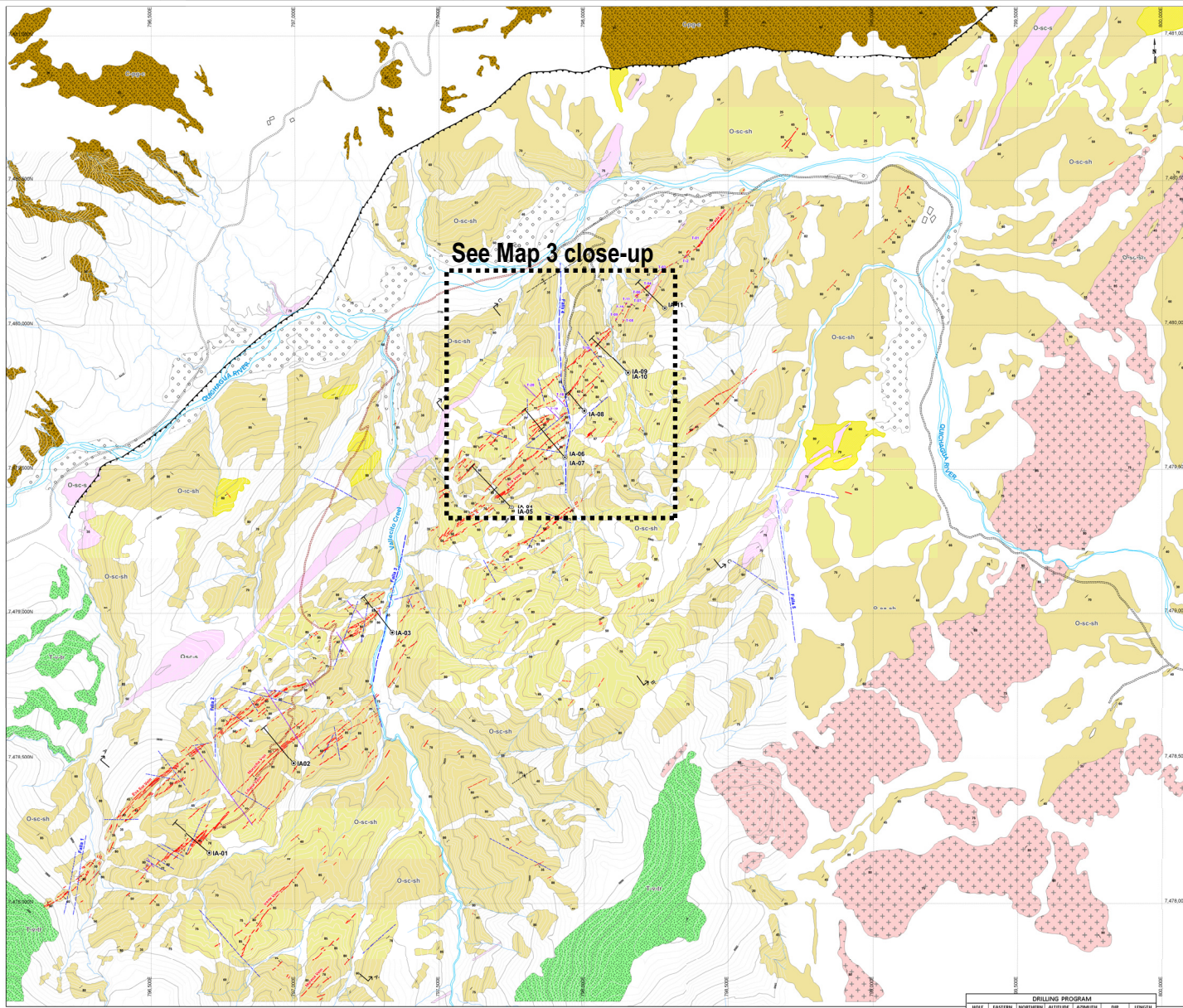
Map 1 – Artha Properties, Jujuy Province Argentina.



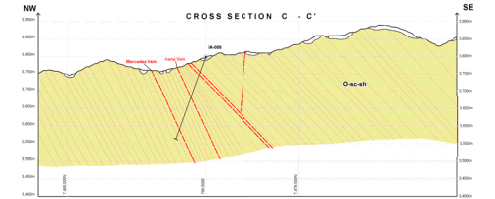
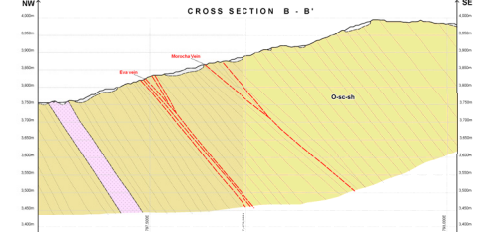
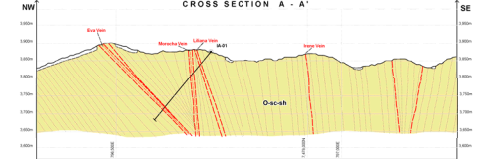
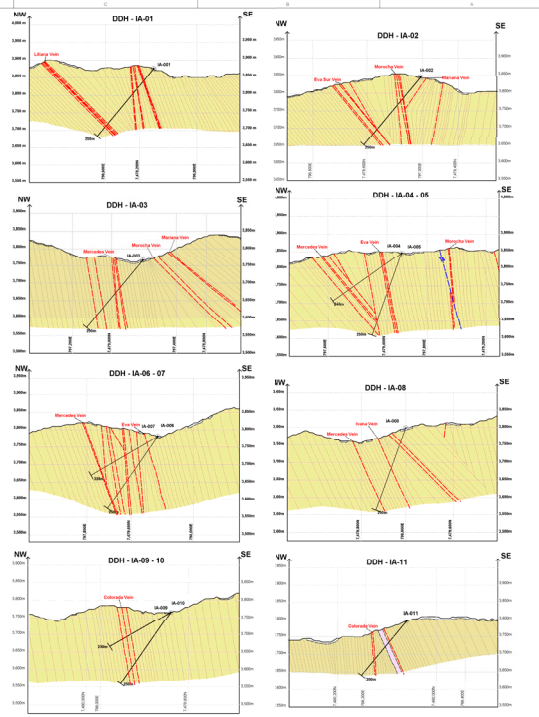
ARTHA'S LAND POSITION

- REE Project
- Precious/Base Metals Project
- X Mineral occurrence

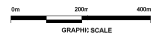
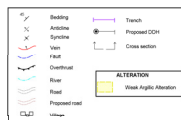




See Map 3 close-up



SYSTEM	SERIE	STRATIGRAPHIC UNITS	INTRUSIVE
QUATERNARY	HOLOGENE	Quaternary alluvial coluvium	
TERTIARY	NEOGENE	Southeastern Formation (Trachyandesite lava)	
		Pigral Sub Group (Complementary Gneissites)	
CRETACEOUS	LOWER		
ORDOVICIAN	ARENIGIAN	Sedimentary Gneissite	Diorite Porphyry
		Glate (Sandstone)	



DRILLING PROGRAM	WELL	EASTING	NORTHERLY	DEPTH (M)	LOG LENGTH (M)
IA-01	296,765	3,478,174	3,875	100	200
IA-02	296,576	3,478,463	3,645	200	200
IA-03	293,126	3,478,145	3,761	222	200
IA-04	292,748	3,478,126	3,645	200	200
IA-05	293,748	3,478,126	3,645	162	200
IA-06	293,933	3,478,540	3,760	200	200
IA-07	293,833	3,478,524	3,760	200	200
IA-08	296,800	3,478,703	3,760	200	200
IA-09	296,125	3,478,703	3,770	184	200
IA-10	296,125	3,478,833	3,770	184	200
IA-11	296,277	3,480,062	3,760	184	200
TOTAL					2610

Map 2 - Ivan Alberto Project geology and drillhole locations

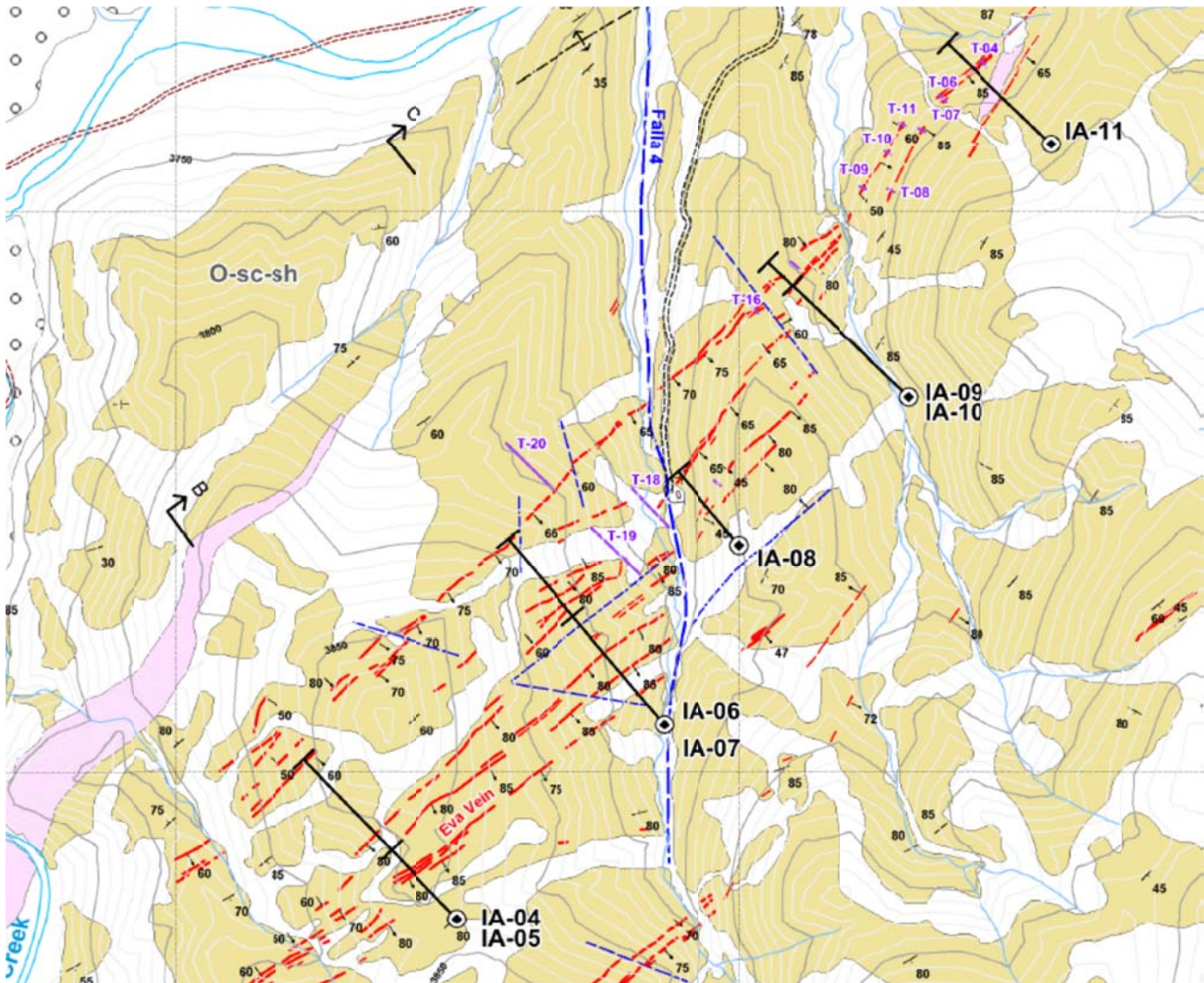
PROJECTION: TRANSVERSE MERCATOR
DATUM: WORLD GEODETIC SYSTEM (WGS) 1984
UTM ZONE 19B

APPROVAL BY CLIENT	DATE	ISSUES

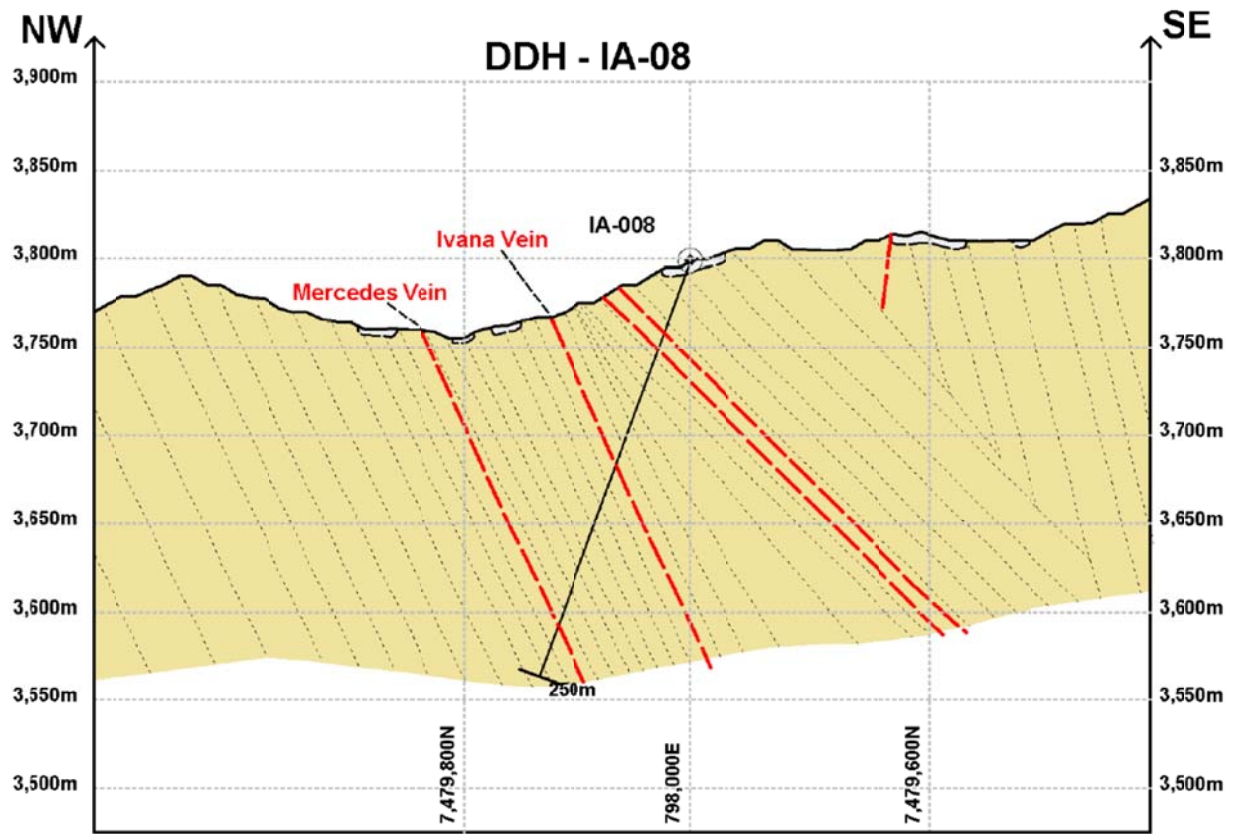
DATE	ISSUES	DATE	ISSUES

Artha
Ivan Alberto Target, Vallejo Property (Argentina)
GEOLOGY AND DRILLING PROGRAM

Map 3 – Close Up of DDH IA-08 location.



Map 4– Cross section of DDH IA-08.



Map 5 – DDH-IA08 Location and surface sampling results

