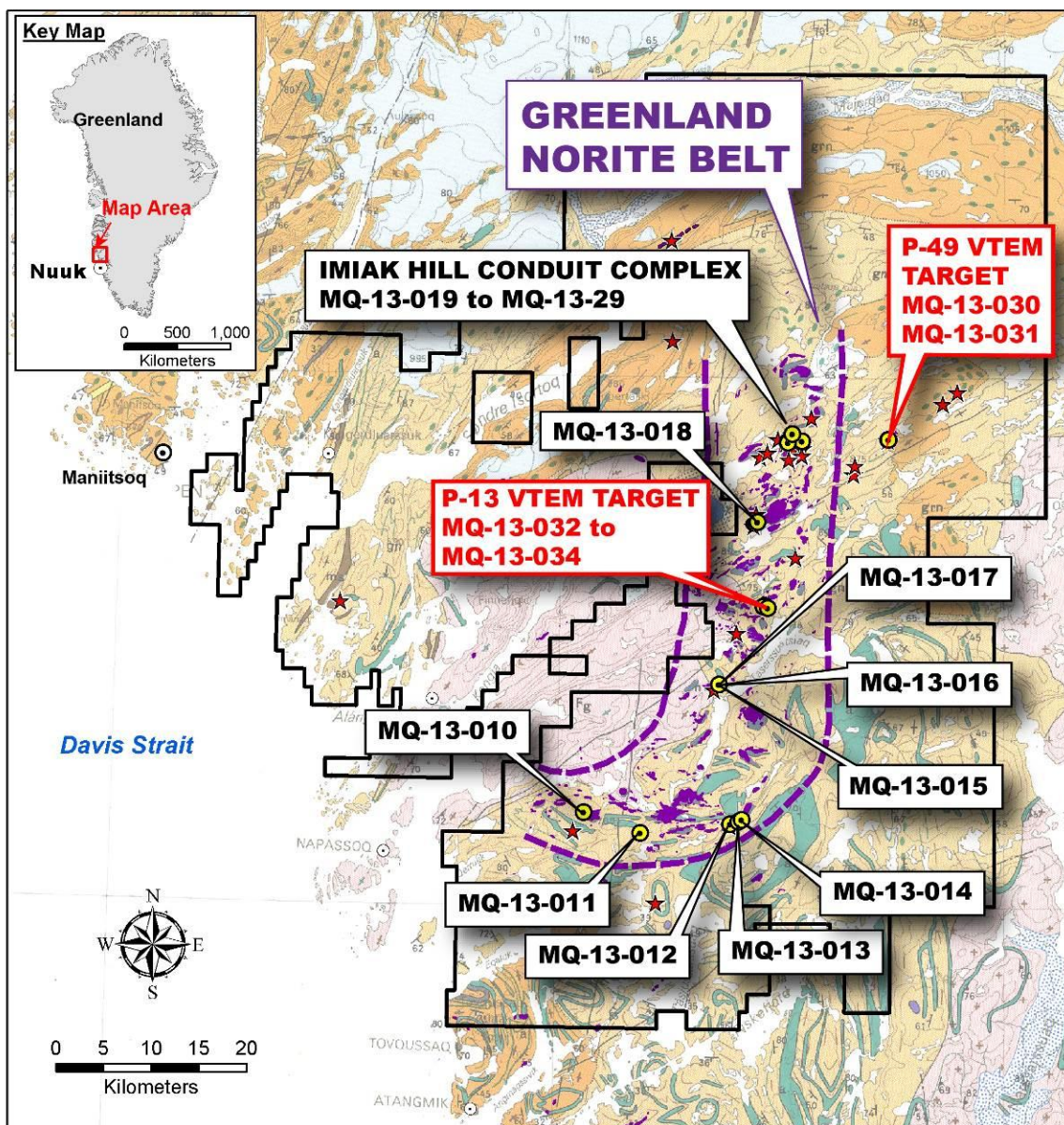


Figure 1: Location of 2013 diamond drill holes on the Maniitsoq project. Holes discussed in this news release (MQ-13-030 to 34) are highlighted in red.

MANIITSOQ PROJECT, SOUTHWEST GREENLAND GEOLOGY* & 2013 DIAMOND DRILL HOLE LOCATION MAP



PROPERTY	NAN DIAMOND DRILL HOLES	Recent	Archean
NAN existing mineral exploration licences (2011/54 & 2012/28)	2012 hole collar (9 holes, 1,551 m)	Ice	Noritic intrusion
MINERALIZATION Ni sulphide occurrence	2013 collar (25 holes, 4,266 m)	Mesozoic Carbonatite	Granite / granodiorite gneiss Gneiss - mainly enderbite Gneiss - mainly TTG Amphibolite

* After Geological Map of Greenland series map sheet 2, 1989

Figure 2: Greyscale satellite image of the P-13 VTEM target area showing drill holes projected vertically to surface and significant assay results.

