

Fig 1 Rook 1 area; location of Area A, Arrow, Dagger, and PLS

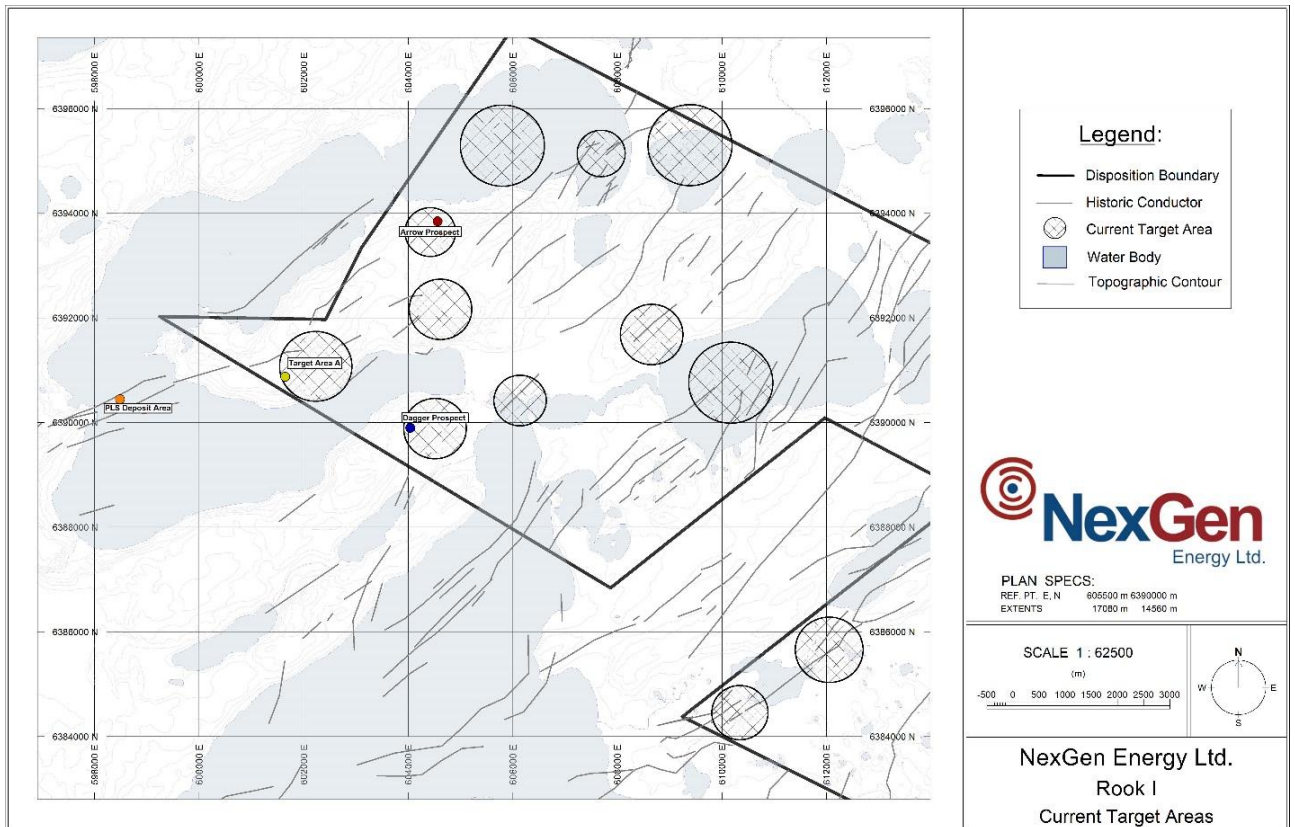


Fig 2 Western Rook 1 claims, winter drilling 2014 (gravity background)

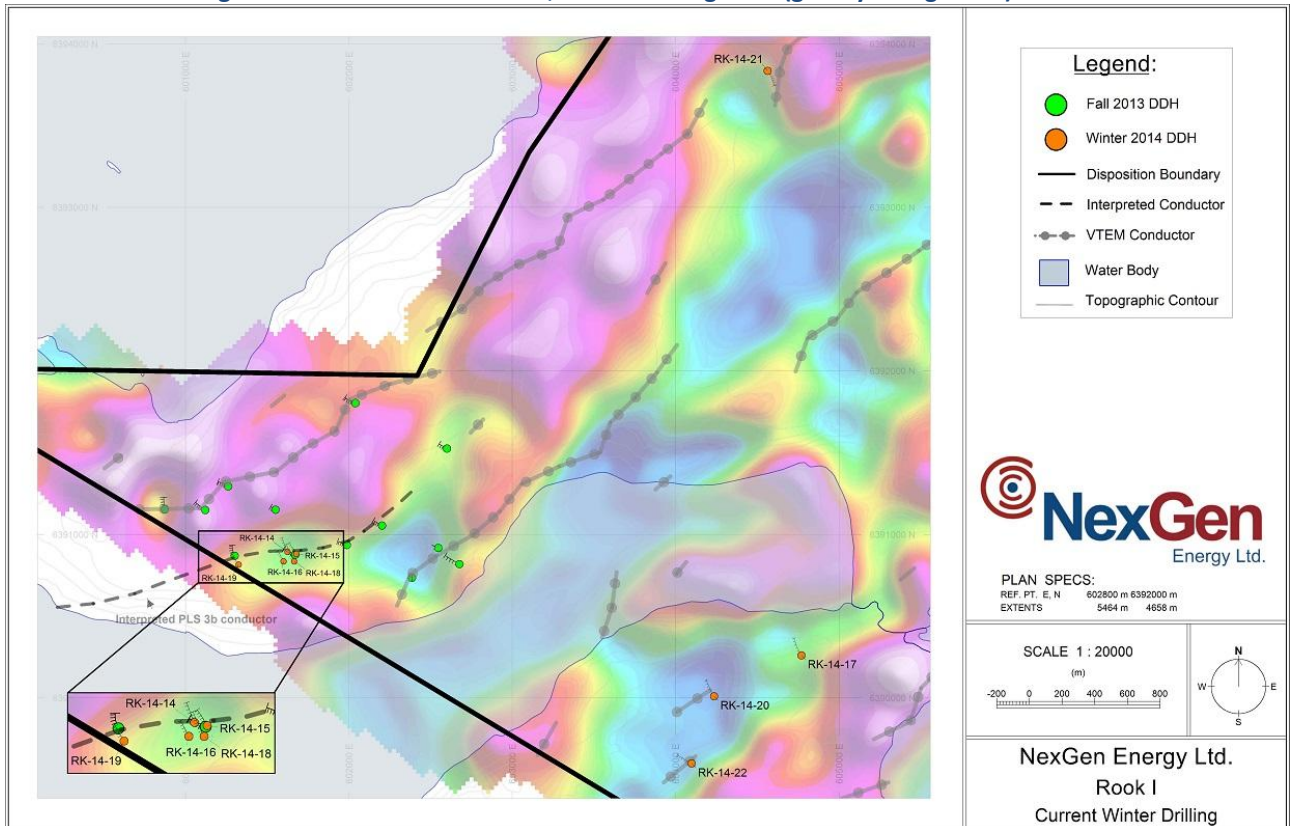


Fig 3 Arrow, drill hole RK-14-21 (gravity background)

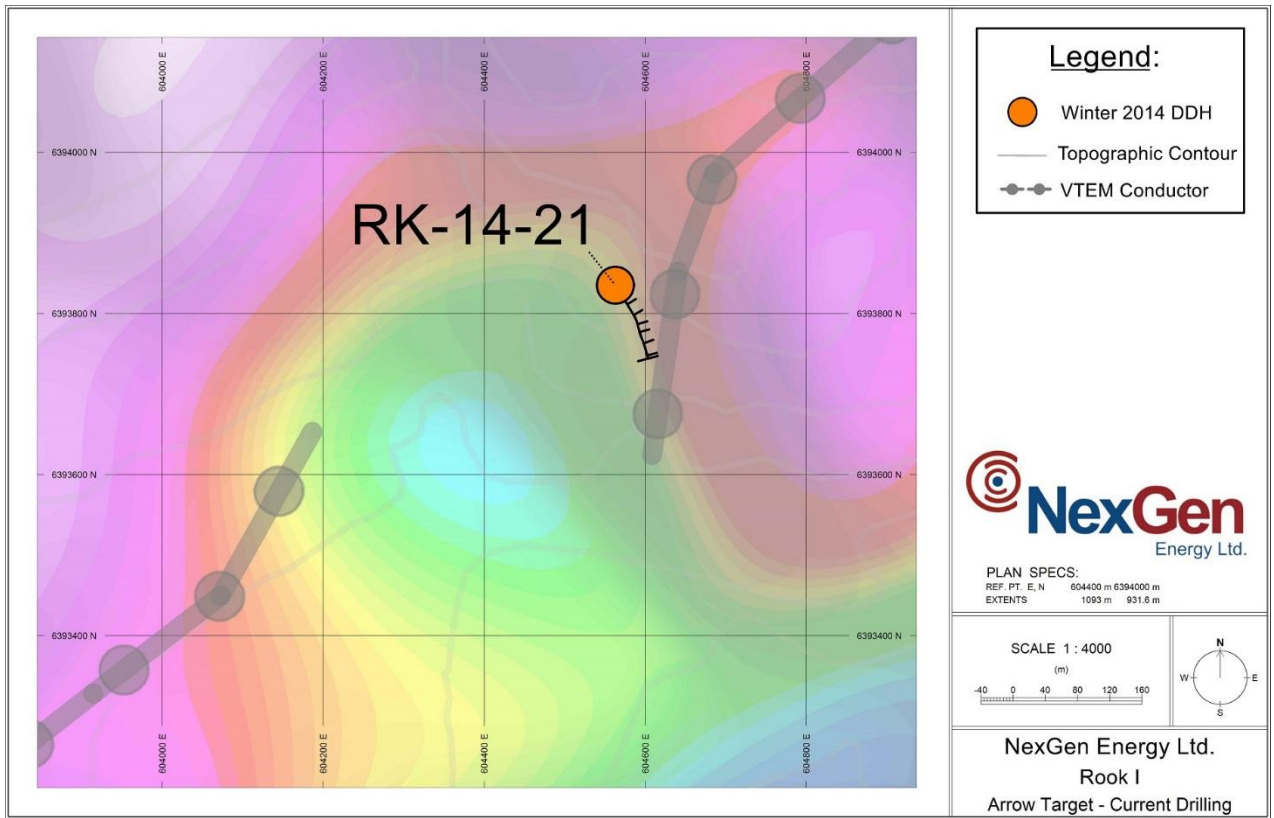


Fig 4 Arrow: uraninite mineralisation in breccia and vein, RK-14-21, 209m

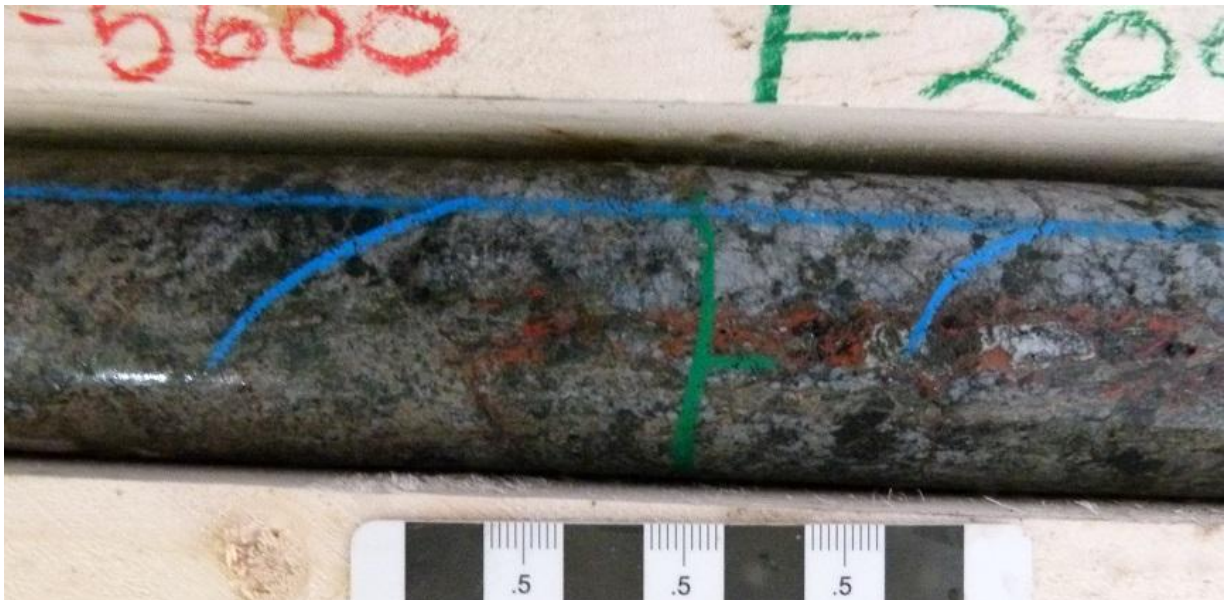


Fig 5 Arrow: detail of pitchblende mineralisation within haematised veinlets in RK-14-21, 209m

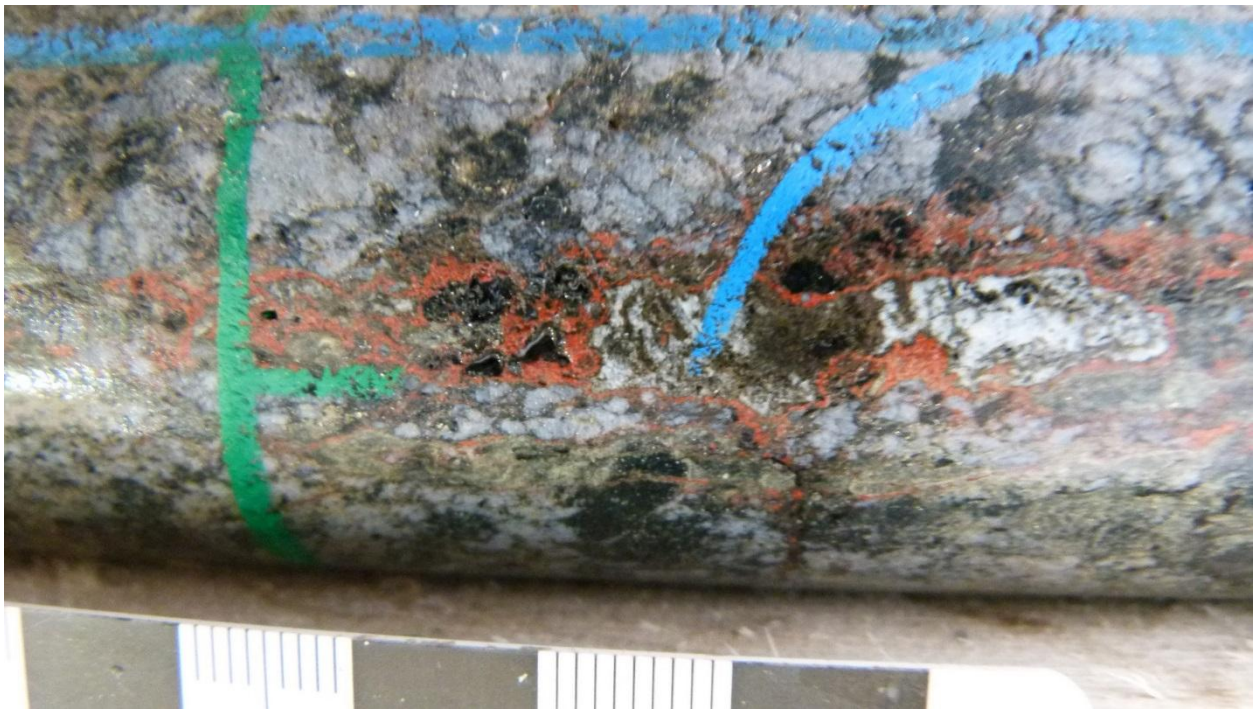


Fig 6 Arrow: coarse pitchblende mineralisation in vein, RK-14-21, 318.5m



Fig 7 Arrow: detail of coarse pitchblende mineralisation in vein, RK-14-21, 318.5m

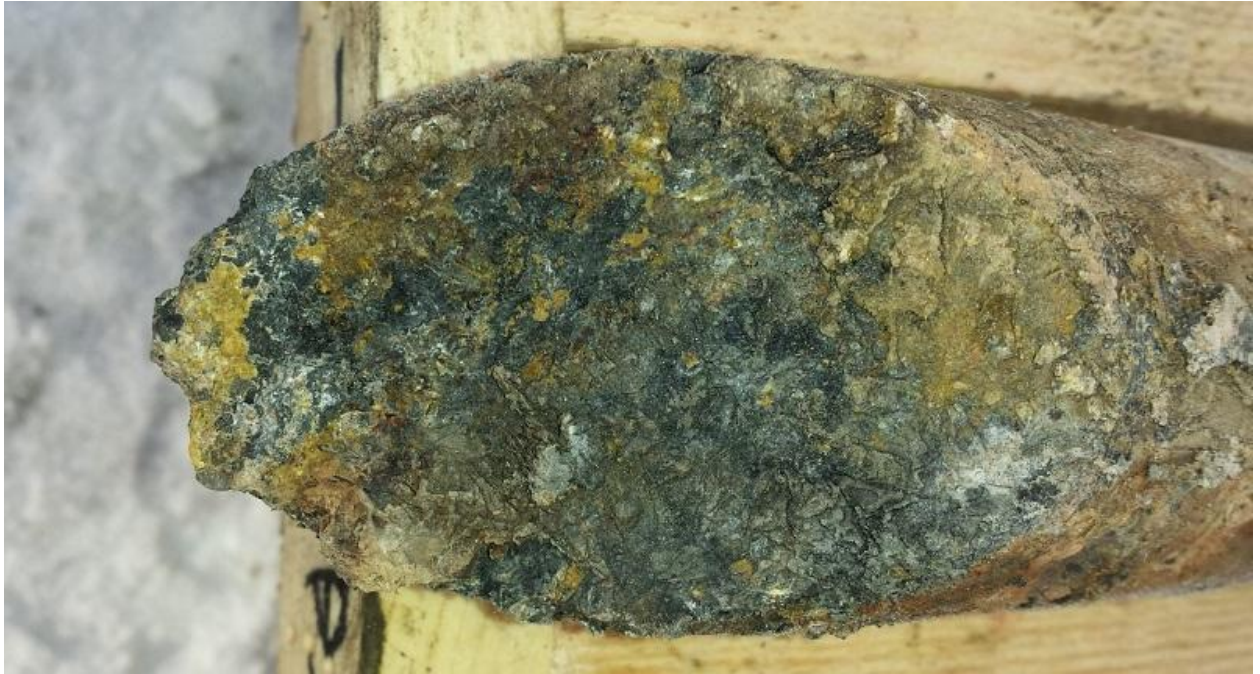


Fig 8 Schematic geology, RK-14-21 (downhole depths)

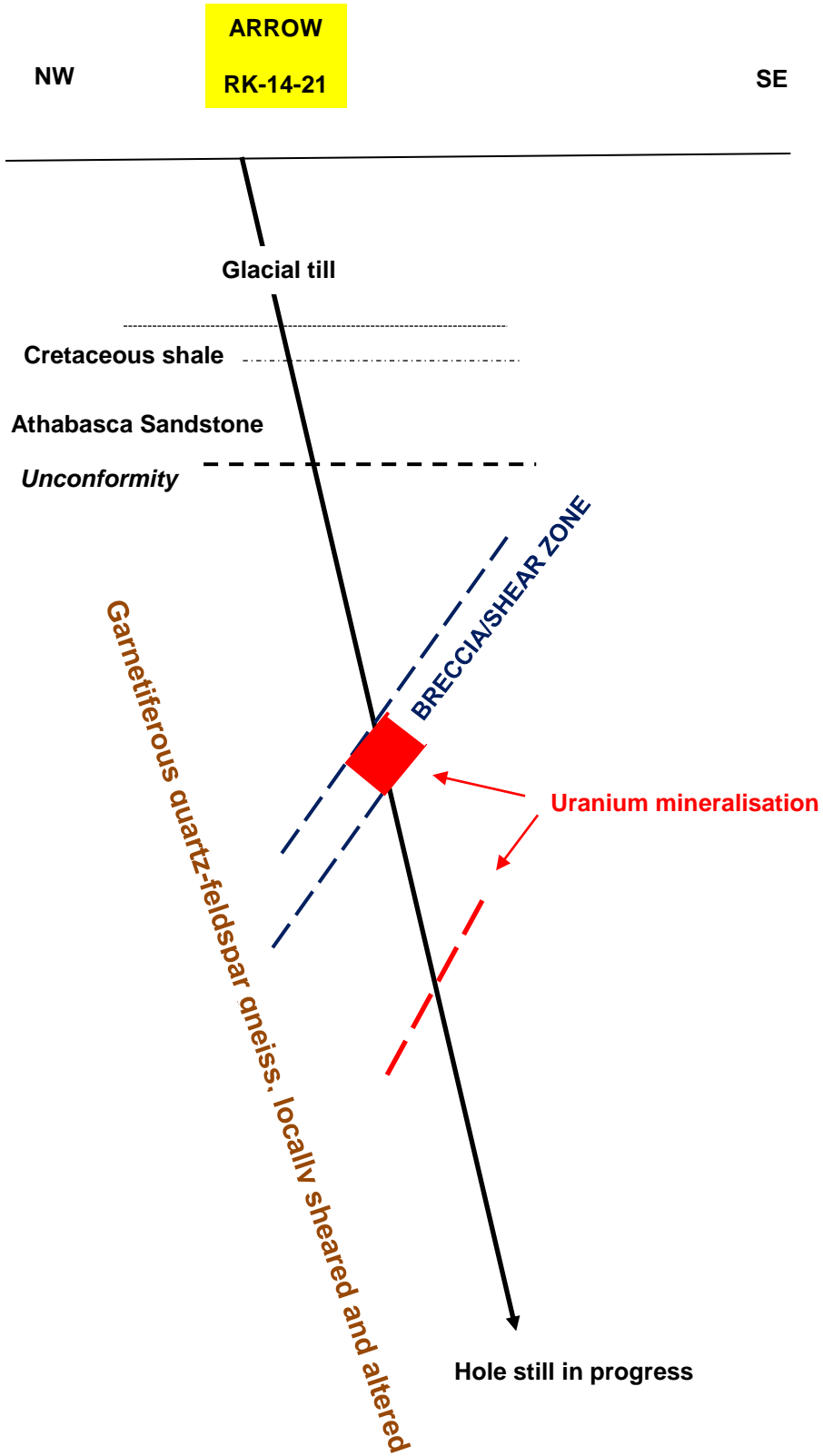


Table 1 Radioactively anomalous zones in RK-14-21, 49.00-321.75m down-hole depths

DDH	From (m)	To (m)	Interval (m downhole)	Min cps *	Max cps *	Comments
RK-14-21	49.00	196.00	147.00	50	80	Basement below 91.2m
RK-14-21	196.00	207.70	11.70	100	220	
RK-14-21	207.70	207.80	0.10	350	400	
RK-14-21	207.80	208.30	0.50	650	1,000	}
RK-14-21	208.30	208.80	0.50	1,000	1,500	}
RK-14-21	208.80	209.20	0.40	2,000	5,600	} 207.8-209.6m = 1.80m
RK-14-21	209.20	209.35	0.15	250	350	}
RK-14-21	209.35	209.60	0.25	500	700	}
RK-14-21	209.60	210.40	0.80	200	300	
RK-14-21	210.40	211.55	1.15	150	225	
RK-14-21	211.55	211.90	0.35	200	300	
RK-14-21	211.90	212.20	0.30	400	700	0.30m
RK-14-21	212.20	213.50	1.30	150	250	
RK-14-21	213.50	214.05	0.55	50	100	
RK-14-21	214.05	214.10	0.05	200	300	
RK-14-21	214.10	214.30	0.20	1,000	1,800	0.20m
RK-14-21	214.30	214.43	0.13	200	300	
RK-14-21	214.43	214.70	0.27	100	150	
RK-14-21	214.70	215.05	0.35	200	300	
RK-14-21	215.05	215.10	0.05	100	150	
RK-14-21	215.10	215.40	0.30	700	1,000	}
RK-14-21	215.40	215.55	0.15	150	250	}
RK-14-21	215.55	215.80	0.25	2,000	3,800	} 215.10-216.15m = 1.05m
RK-14-21	215.80	216.00	0.20	1,000	3,100	}
RK-14-21	216.00	216.15	0.15	500	700	}
RK-14-21	216.15	218.00	1.85	50	100	
RK-14-21	218.00	222.50	4.50	100	160	
RK-14-21	222.50	222.65	0.15	300	400	
RK-14-21	222.65	223.25	0.60	450	1,020	0.60m
RK-14-21	223.25	223.60	0.35	150	200	
RK-14-21	223.60	223.72	0.12	200	350	
RK-14-21	223.72	224.15	0.43	80	150	
RK-14-21	224.15	226.30	2.15	50	80	
RK-14-21	226.30	226.40	0.10	150	220	
RK-14-21	226.40	228.00	1.60	80	180	
RK-14-21	228.00	228.25	0.25	200	350	
RK-14-21	228.25	229.00	0.75	800	1,500	}
RK-14-21	229.00	230.65	1.65	300	700	}
RK-14-21	230.65	230.77	0.12	1,000	2,000	} 228.25 - 231.00m = 2.75m
RK-14-21	230.75	230.80	0.05	600	1,000	}
RK-14-21	230.80	230.90	0.10	300	600	}
RK-14-21	230.90	231.00	0.10	800	1,150	}
RK-14-21	231.00	231.20	0.20	200	300	
RK-14-21	231.20	231.95	0.75	100	160	
RK-14-21	231.95	235.20	3.25	40	80	
RK-14-21	235.20	317.30	82.10	50	160	
RK-14-21	317.30	318.50	1.20	50	100	
RK-14-21	318.50	318.65	0.15	500	2,000	}
RK-14-21	318.65	318.70	0.05	4,000	8,000	} 318.50-319.10m = 0.60m
RK-14-21	318.70	318.90	0.20	700	2,000	}
RK-14-21	318.90	319.10	0.20	400	700	}
RK-14-21	319.10	321.75	2.65	50	90	
	Hole still in progress					

* Readings by total count gamma scintillometer type Exploranium GR-110; max reading 9999 cps (counts per second)