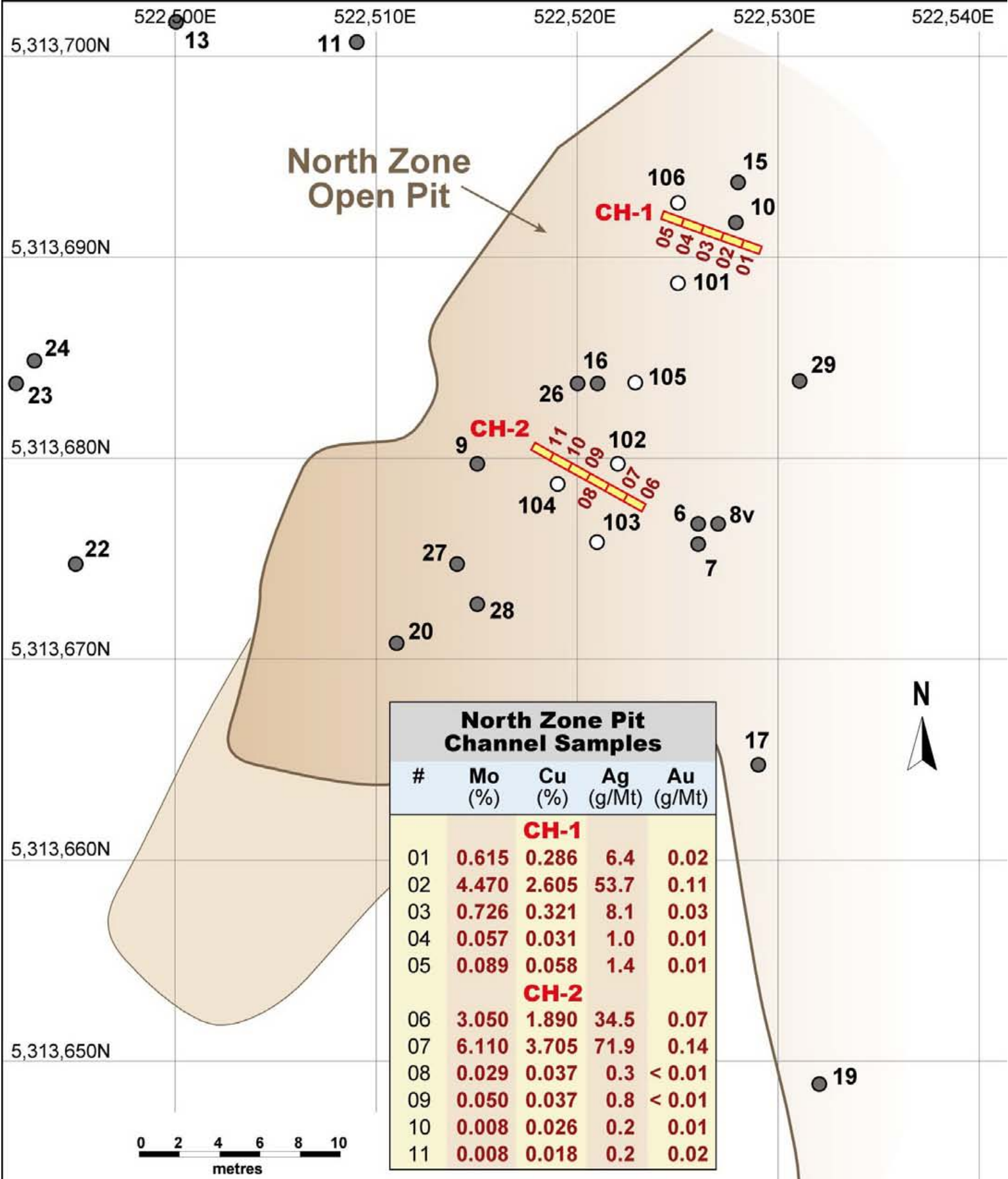
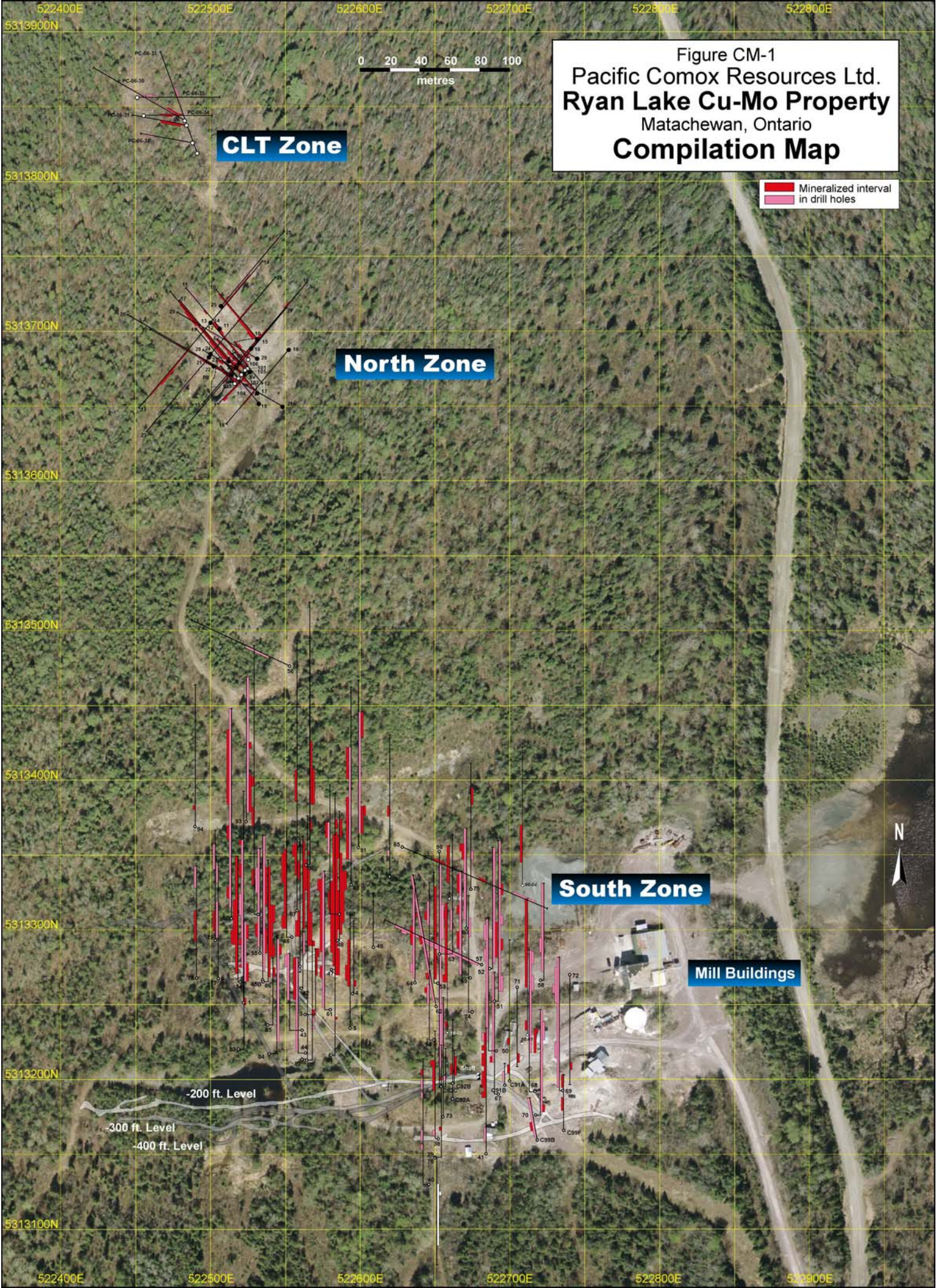


PACIFIC COMOX RESOURCES LTD						
Table 1: Channel Samples In North Zone Open Pit						
Ryan Lake Property						
Channel Sample #	Length (m)	Copper (%)	Molybdenum (%)	Molybdenum (lbs/ton)	Silver (g/t)	Gold (g/t)
Channel CH-1						
01	1	0.286	0.615	12.3	6.4	0.02
02	1	2.605	4.470	89.4	53.7	0.11
03	1	0.321	0.726	14.5	8.1	0.03
04	1	0.031	0.057	1.1	1.0	0.01
05	1	0.058	0.089	1.8	1.4	0.01
Channel CH-2						
06	1	1.890	3.050	61.0	34.5	0.07
07	1	3.705	6.110	122.2	71.9	0.14
08	1	0.037	0.029	0.6	0.3	<0.01
09	1	0.037	0.050	1.0	0.8	<0.01
10	1	0.026	0.008	0.1	0.2	0.01
11	1	0.018	0.008	0.1	0.2	0.02



North Zone Pit Channel Samples				
#	Mo (%)	Cu (%)	Ag (g/Mt)	Au (g/Mt)
CH-1				
01	0.615	0.286	6.4	0.02
02	4.470	2.605	53.7	0.11
03	0.726	0.321	8.1	0.03
04	0.057	0.031	1.0	0.01
05	0.089	0.058	1.4	0.01
CH-2				
06	3.050	1.890	34.5	0.07
07	6.110	3.705	71.9	0.14
08	0.029	0.037	0.3	< 0.01
09	0.050	0.037	0.8	< 0.01
10	0.008	0.026	0.2	0.01
11	0.008	0.018	0.2	0.02

Figure CM-3-P
 Pacific Comox Resources Ltd.
Ryan Lake Cu-Mo Claims
 Matachewan, Ontario
North Zone Open Pit



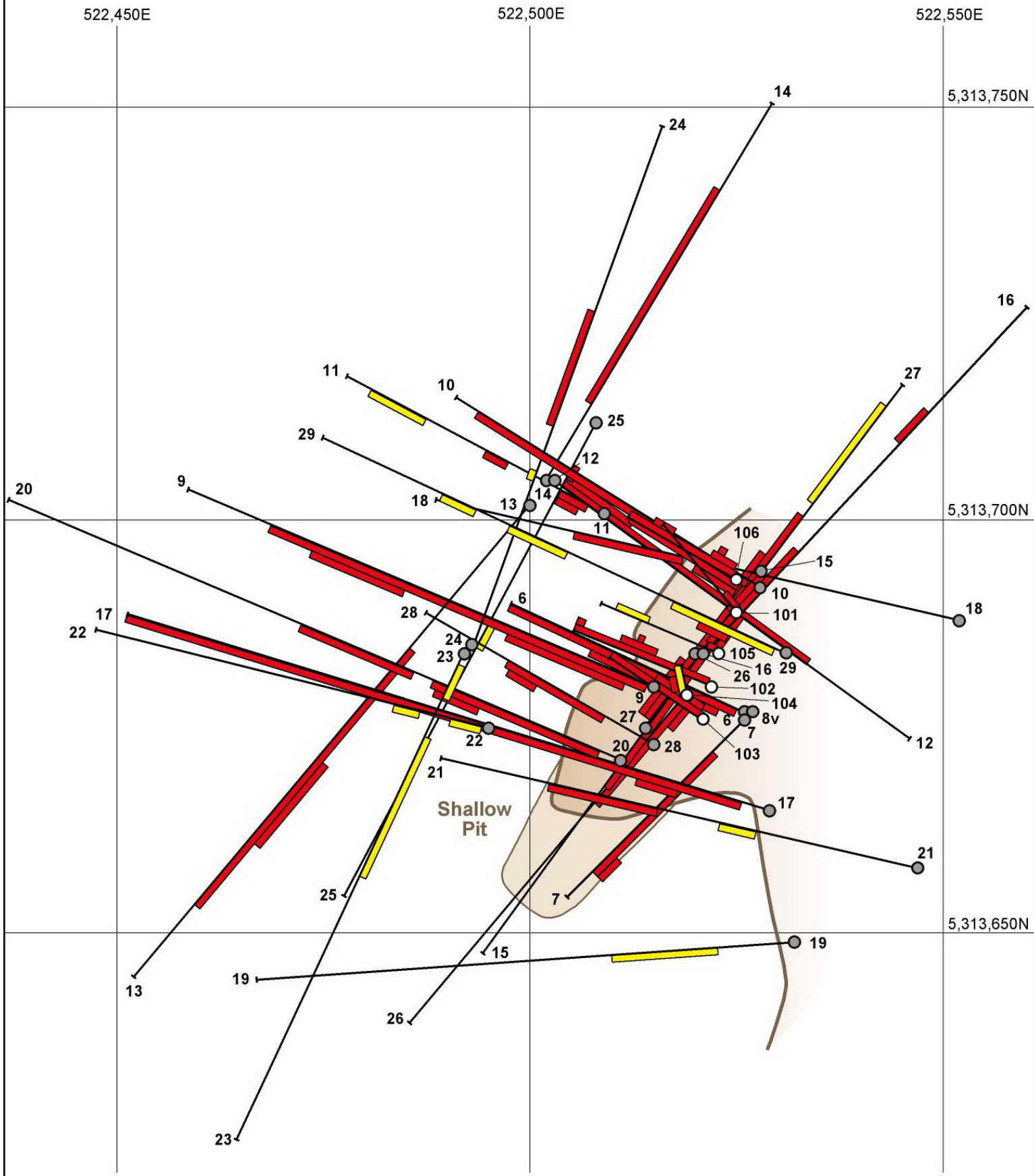
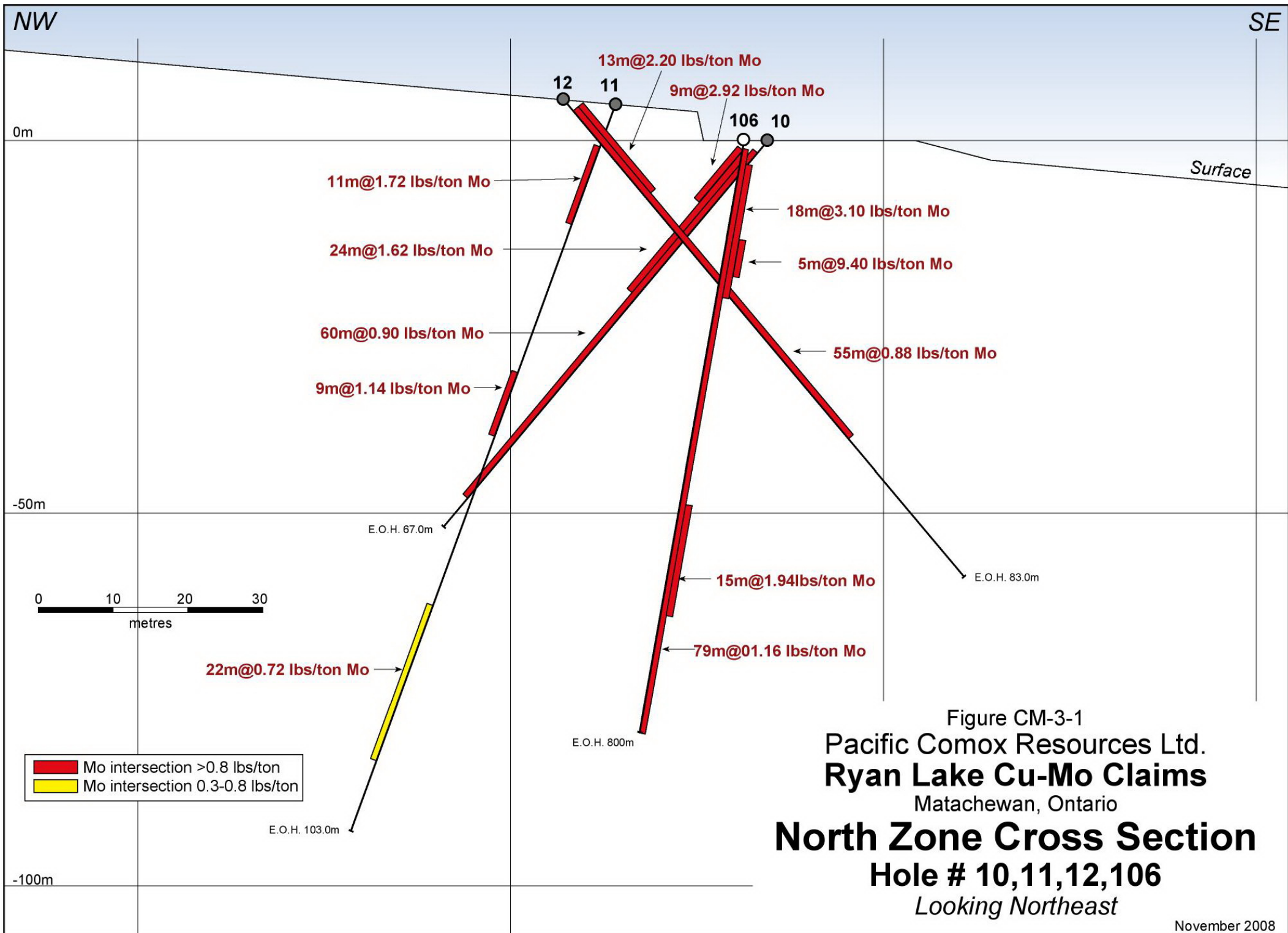


Figure CM-3
 Pacific Comox Resources Ltd.
Ryan Lake Cu-Mo Claims
 Matachewan, Ontario
North Zone Compilation Map



SSW

NNE

0m

Surface

23 24

13 14

7m@0.18 lbs/ton Mo

29m@0.28 lbs/ton Mo

47m@0.48 lbs/ton Mo

2m@0.54 lbs/ton Mo

63m@1.58 lbs/ton Mo

28m@0.84 lbs/ton Mo

-50m

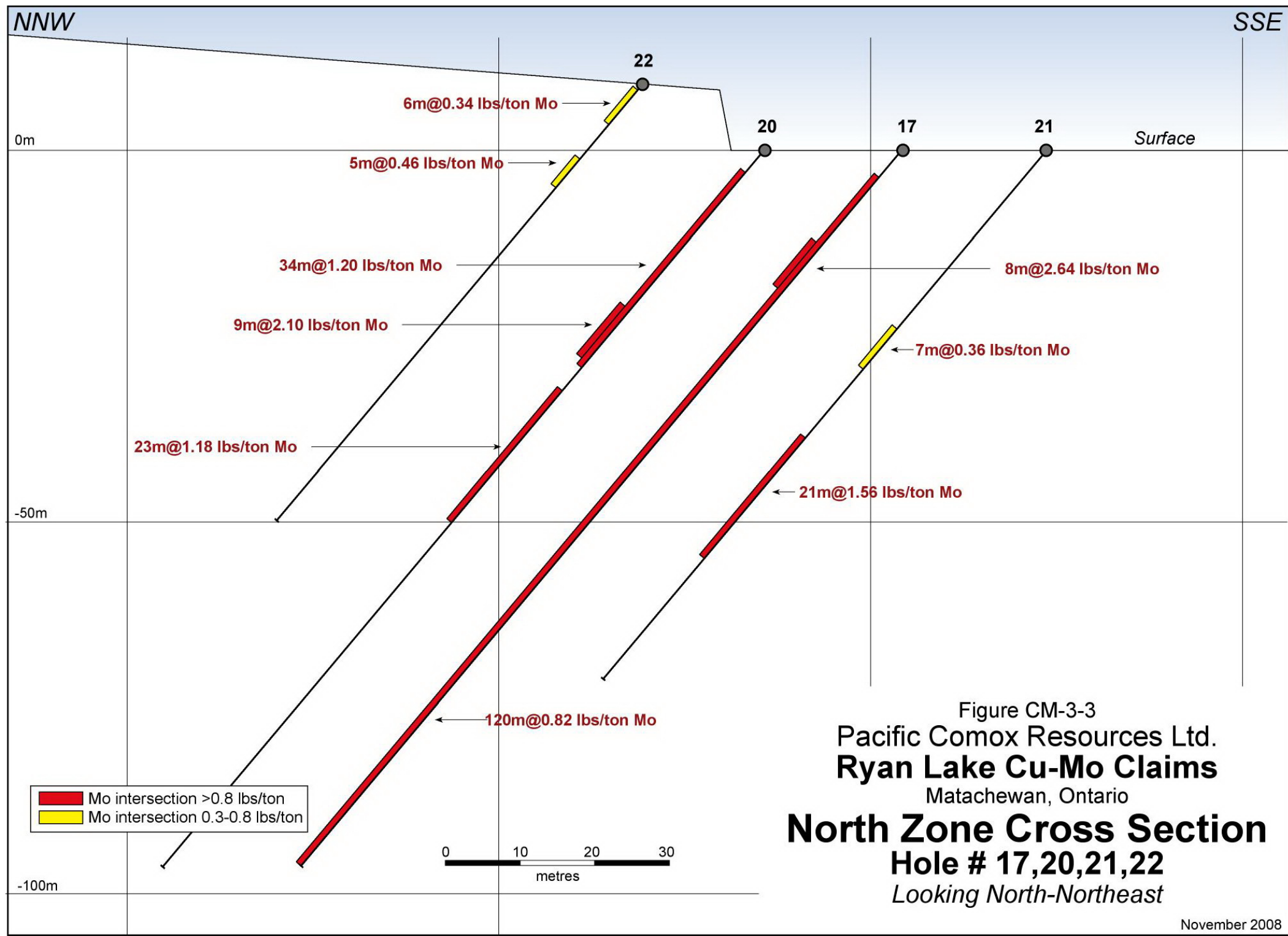
20m@4.04 lbs/ton Mo

-100m

- Mo intersection >0.8 lbs/ton
- Mo intersection 0.3-0.8 lbs/ton

Figure CM-3-2
 Pacific Comox Resources Ltd.
Ryan Lake Cu-Mo Claims
 Matachewan, Ontario
North Zone Cross Section
Hole # 13,14,23,24,25
Looking West-Northwest





SW

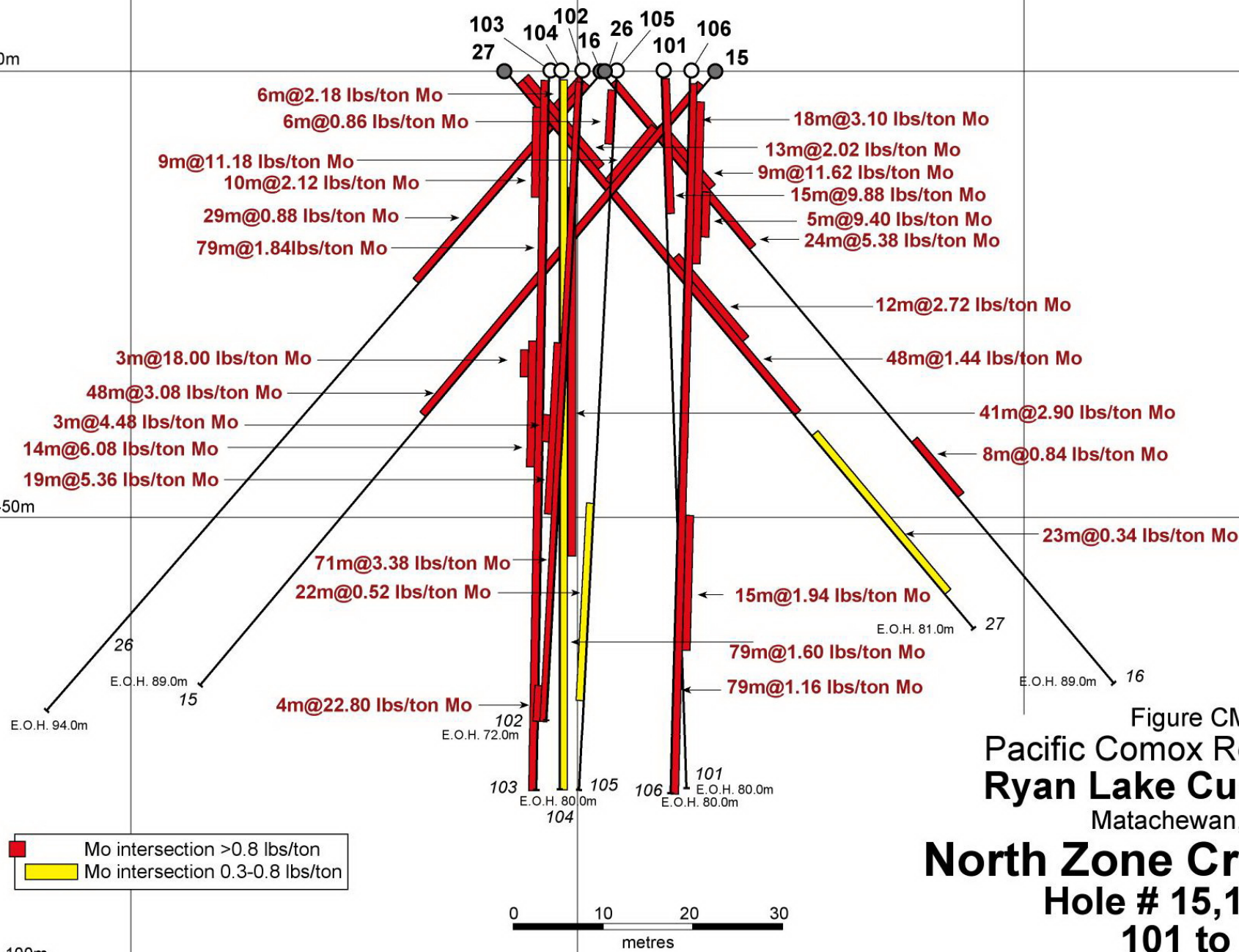
NE

0m

Surface

-50m

-100m



Mo intersection >0.8 lbs/ton
 Mo intersection 0.3-0.8 lbs/ton

Figure CM-3-4
 Pacific Comox Resources Ltd.
Ryan Lake Cu-Mo Claims
 Matachewan, Ontario
North Zone Cross Section
Hole # 15,16,26,27,
101 to 106
Looking North-Northeast