

Figure 1: Location of Drilling and Geological Mapping

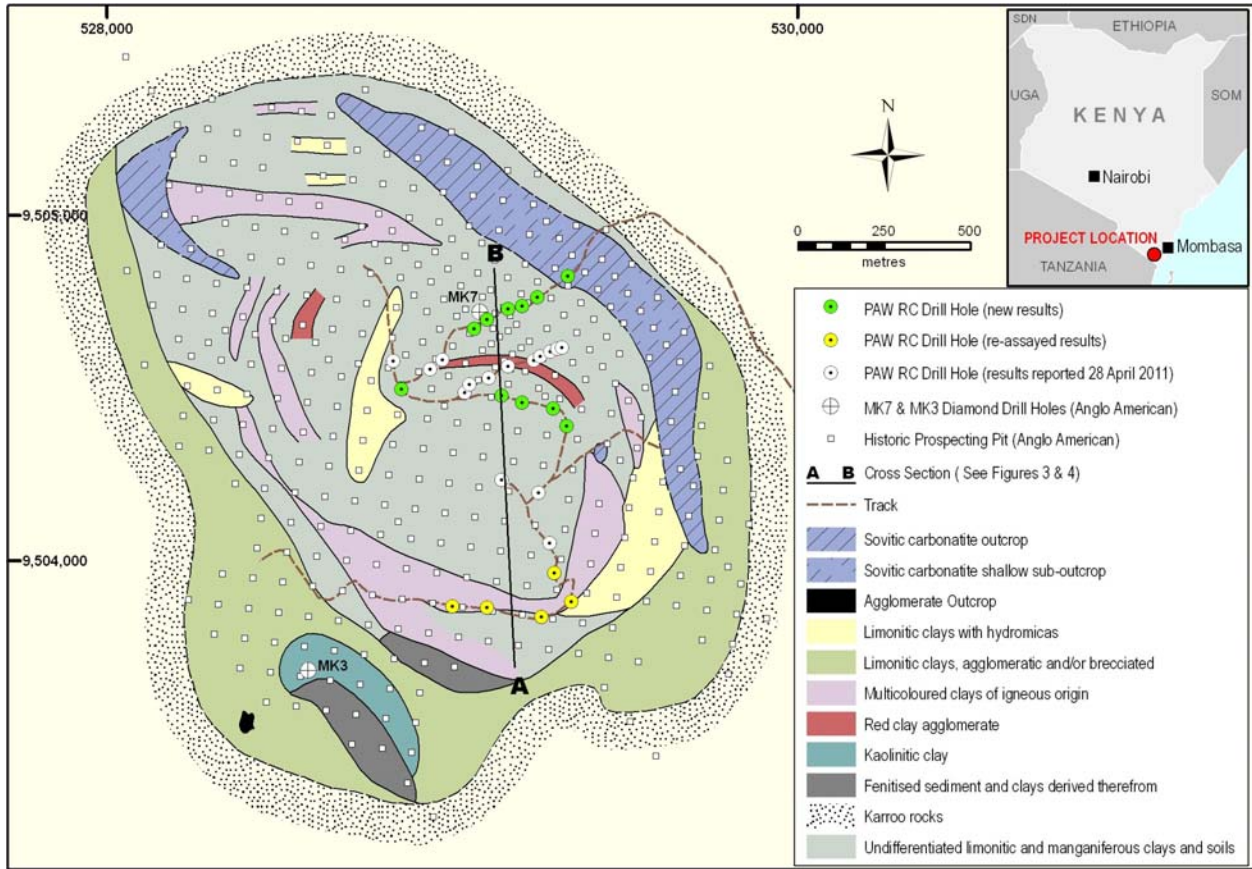


Figure 2: RC Drilling Results

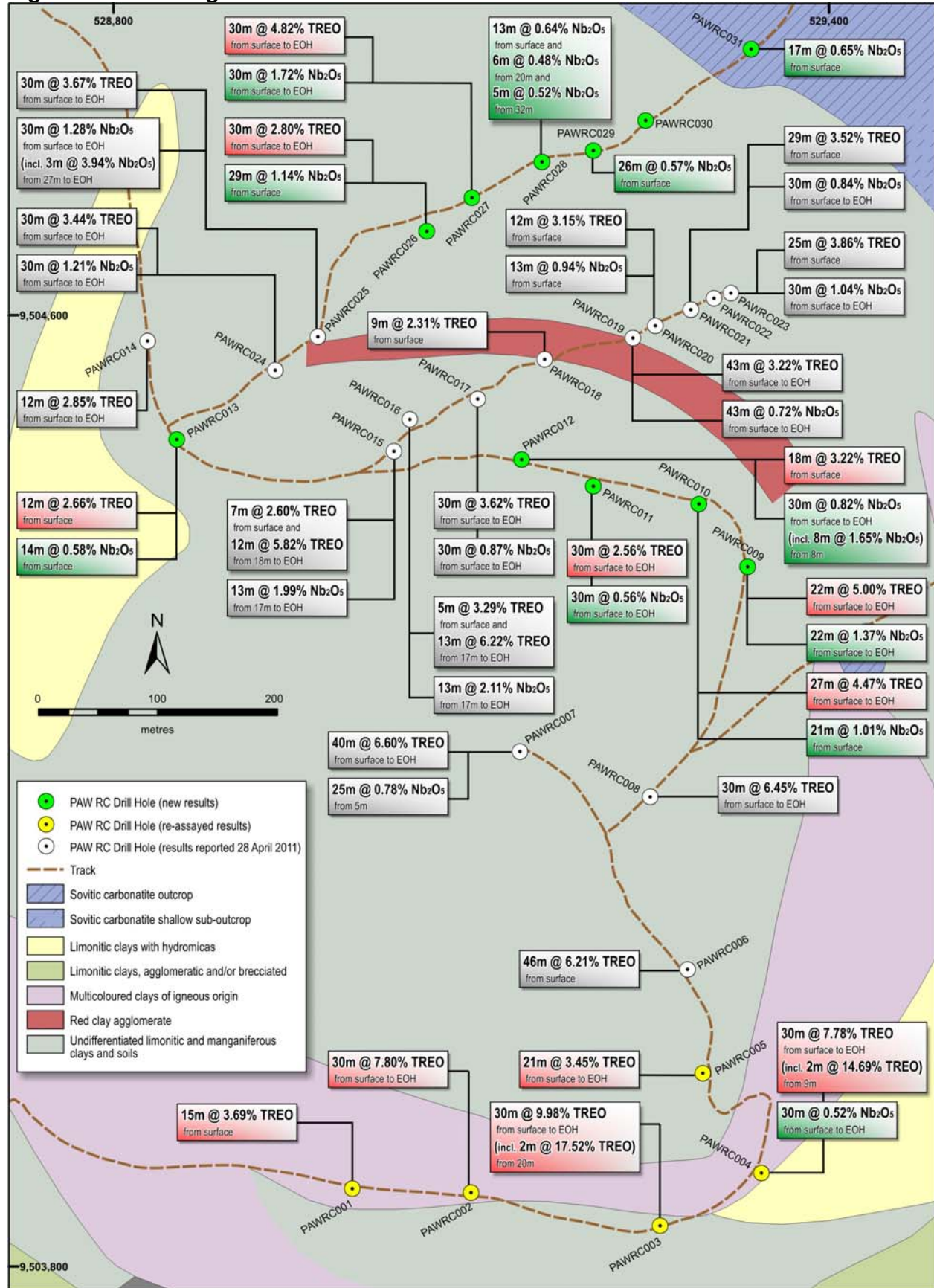


Figure 3: Conceptual Cross Section A-B Showing Niobium Intersections

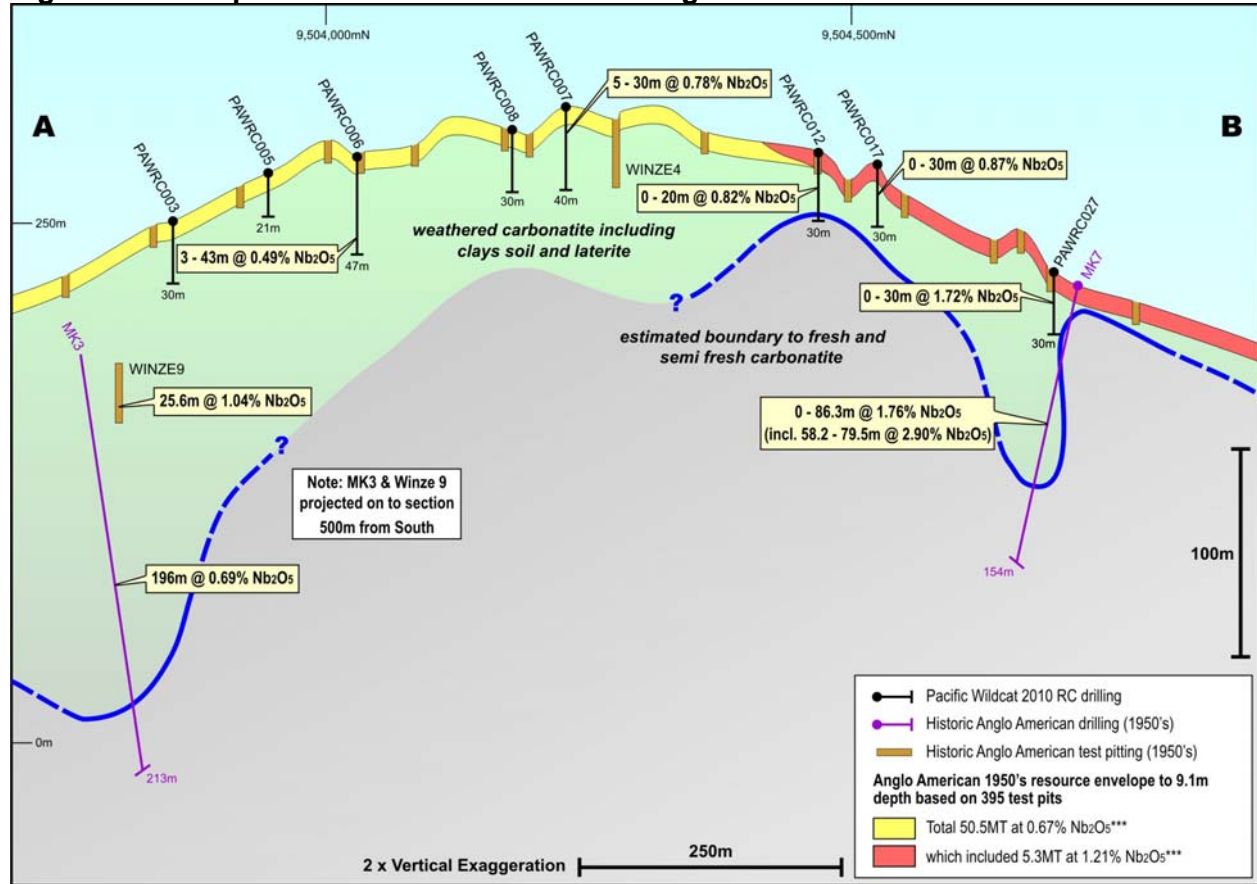
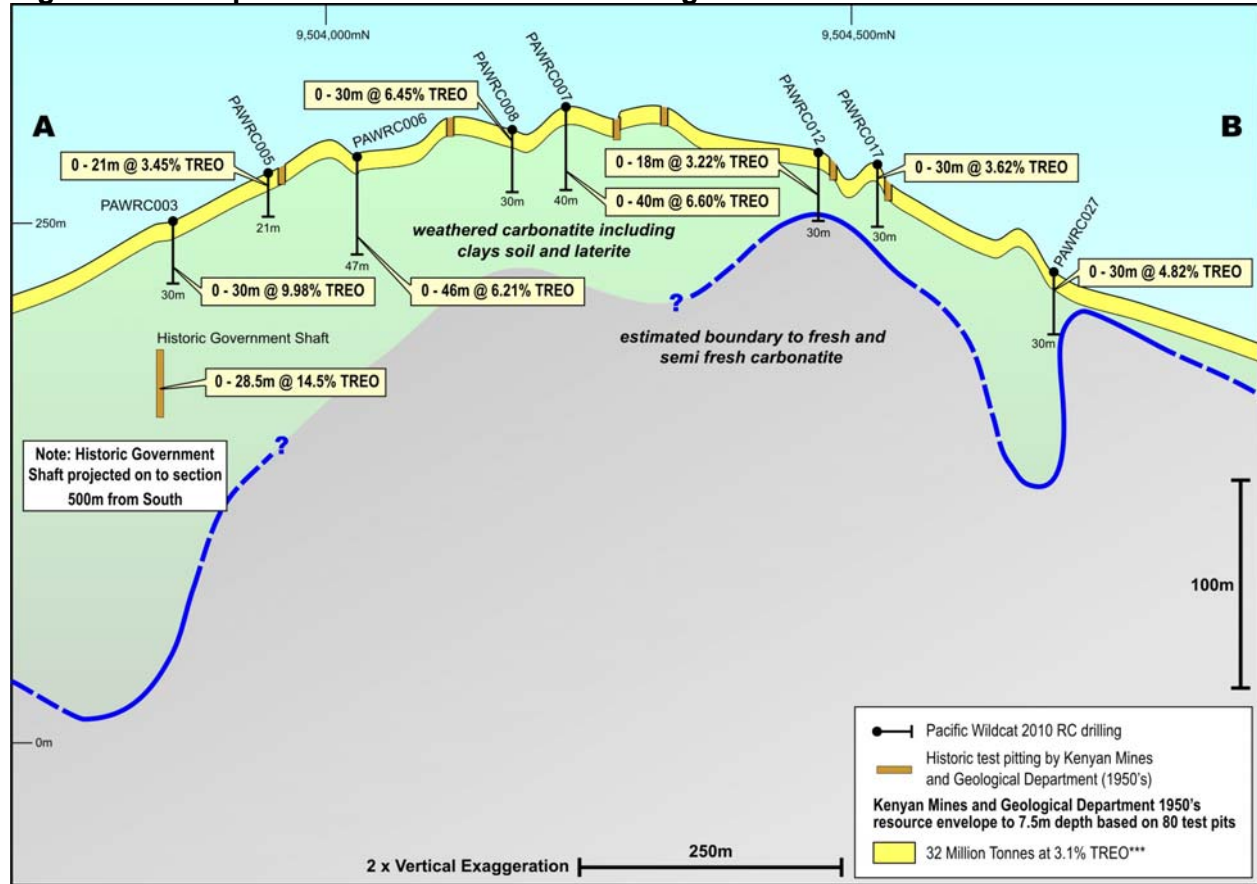


Figure 4: Conceptual Cross Section A-B Showing Rare Earth Intersections



***Note that the potential quantities and grades of the above estimates are conceptual in nature, and there is insufficient exploration to date to define a current mineral resource and therefore it is uncertain if further exploration will result in the target being delineated as a current mineral resource. A "qualified person" as defined under National Instrument 43-101 has not completed sufficient work to classify the above mentioned historical estimate as a current mineral resource. The Company is not treating the historical estimate as a current mineral resource. The historical estimate is not compliant with NI 43-101 and should not be relied upon.

Table 1: Mrima Hill RC Drill Results +1% Rare Earth Oxides (including Yttrium)

Hole Id	COORDINATES			INTERCEPTS			REO-LIGHT					REO-HEAVY										U	Th			
	East	North	Total Depth	From	To	Interval	Total REO	LREO	HREO	La ₂ O ₃	Ce ₂ O ₃	Pr ₂ O ₃	Nd ₂ O ₃	Sm ₂ O ₃	Eu ₂ O ₃	Gd ₂ O ₃	Tb ₂ O ₃	Dy ₂ O ₃	Ho ₂ O ₃	Er ₂ O ₃	Tm ₂ O ₃			Yb ₂ O ₃	Lu ₂ O ₃	Y ₂ O ₃
	m	m	m	m	m	m	%	%	%	ppm	ppm	ppm	ppm	ppm	ppm	ppm	ppm	ppm	ppm	ppm	ppm			ppm	ppm	ppm
PAWRC001*	529001	9503867	32	0	15	15	3.69	3.39	0.30	11816	14970	1535	4921	646	181	486	58	288	49	119	14	75	11	1740	9	299
			and	23	29	6	1.95	1.89	0.06	6239	9274	790	2296	280	70	159	17	73	10	20	2	13	2	283	5	237
PAWRC002*	529100	9503864	30	0	30	30	7.80	7.39	0.41	22502	35617	3413	10978	1396	370	858	91	428	73	157	18	97	13	1983	4	993
PAWRC003*	529259	9503836	30	0	30	30	9.98	9.71	0.27	35351	44536	4152	11881	1178	291	634	69	302	46	99	11	53	7	1207	6	294
			including	20	22	2	17.52	17.12	0.40	60103	84758	6514	18138	1663	456	1081	118	514	72	141	16	79	9	1524	5	305
PAWRC004*	529344	9503880	30	0	30	30	7.78	7.39	0.39	24572	34624	3092	10153	1412	402	1009	118	508	66	132	14	66	8	1577	11	586
			including	9	11	2	14.69	13.76	0.93	49888	58975	5670	19782	3307	1013	2560	288	1148	143	281	29	135	15	3640	15	425
PAWRC005*	529295	9503964	21	0	21	21	3.45	3.35	0.10	8987	17713	1406	4739	610	141	260	29	119	17	40	5	28	4	395	16	456
PAWRC006	529282	9504050	47	0	46	46	6.21	5.86	0.35	19764	26349	2571	8873	1065	290	691	80	367	58	140	16	85	11	1745	10	684
PAWRC007	529142	9504233	40	0	40	40	6.60	6.06	0.54	20775	25303	2840	10290	1398	418	1145	146	672	98	217	26	139	17	2504	23	822
PAWRC008	529250	9504196	30	0	30	30	6.45	6.19	0.26	20842	27981	2795	9305	997	239	515	53	236	40	101	13	75	11	1313	8	482
PAWRC009*	529332	9504389	22	0	22	22	5.00	4.45	0.55	10655	19854	2374	9989	1586	432	1113	129	585	91	212	26	144	20	2784	27	780
PAWRC010*	529292	9504441	27	0	27	27	4.47	4.03	0.44	12244	15880	2331	8561	1303	370	912	116	538	82	188	24	133	17	2036	24	783
PAWRC011*	529203	9504457	30	0	30	30	2.56	2.36	0.20	5787	11761	1091	4355	651	168	376	43	201	34	85	11	65	9	980	18	405
PAWRC012*	529143	9504478	30	0	18	18	3.22	2.67	0.55	6313	12187	1362	5813	1029	307	851	117	601	104	254	32	175	24	3074	29	621
PAWRC013*	528853	9504497	30	0	12	12	2.66	2.33	0.33	6008	11453	1114	4124	619	172	460	60	315	58	153	20	116	17	1886	39	338
PAWRC014	528829	9504578	12	0	12	12	2.85	2.57	0.28	7274	12375	1194	4218	594	175	434	60	307	54	131	16	83	11	1553	34	313
PAWRC015	529036	9504486	30	0	7	7	2.60	2.42	0.18	5822	12525	1108	4163	608	173	384	47	212	32	73	9	49	7	821	38	343
			and	18	30	12	5.82	5.47	0.35	14759	26597	2652	9429	1275	355	814	100	456	67	144	17	83	10	1418	55	404
PAWRC016	529049	9504511	30	0	5	5	3.29	3.07	0.22	7620	14515	1584	6163	865	241	530	65	286	39	82	10	53	7	861	43	349
			and	17	30	13	6.22	5.68	0.54	14175	27245	2954	10840	1607	464	1112	151	741	117	249	28	138	16	2401	72	534
PAWRC017	529105	9504529	30	0	30	30	3.62	2.76	0.86	6705	13387	1431	5284	813	247	680	105	651	149	426	55	281	41	5974	83	474
PAWRC018	529162	9504563	30	0	9	9	2.31	2.15	0.17	5057	11848	930	3178	441	126	302	38	186	31	72	9	48	7	862	31	472
PAWRC019	529236	9504580	43	0	43	43	3.22	2.55	0.67	6913	12123	1225	4469	726	230	605	95	526	114	337	41	222	31	4515	83	796
PAWRC020	529254	9504591	30	0	12	12	3.15	2.79	0.36	7058	13743	1360	4997	760	225	555	78	370	62	156	18	99	13	2001	55	478
PAWRC021	529284	9504605	30	0	29	29	3.52	2.89	0.62	7894	13837	1383	5034	774	237	631	99	560	115	309	35	181	25	4044	79	575
PAWRC022	529304	9504614	30	0	5	5	2.21	1.96	0.25	4851	9775	938	3464	563	171	433	59	275	46	120	15	86	11	1324	55	387
PAWRC023	529317	9504618	30	0	25	25	3.86	2.99	0.87	7658	13989	1540	5817	921	278	862	130	798	165	446	56	319	40	5567	125	463
			and	28	30	2	2.45	2.05	0.40	4853	9463	1071	4343	778	240	651	90	418	73	184	20	99	10	2197	33	413
PAWRC024	528936	9504554	30	0	30	30	3.44	2.87	0.56	7219	13522	1485	5568	908	281	832	118	612	113	283	36	212	26	3136	93	672
PAWRC025	528972	9504582	30	0	30	30	3.67	3.30	0.36	8479	15876	1650	6095	924	258	687	84	357	61	163	19	106	13	1887	20	359
PAWRC026	529063	9504672	30	0	30	30	2.80	2.53	0.27	6186	12329	1307	4801	679	186	493	60	268	47	122	15	83	10	1400	26	283
PAWRC027*	529101	9504699	30	0	30	30	4.82	4.25	0.57	10495	20038	2247	8411	1357	405	1012	128	611	100	216	23	112	15	3035	29	344
PAWRC028*	529161	9504729	50	0	6	6	2.23	1.95	0.28	4895	9459	994	3612	530	154	389	51	269	49	126	16	92	13	1684	52	275
PAWRC029*	529203	9504738	50	0	10	10	2.42	2.13	0.29	5353	10484	1060	3854	574	169	428	55	280	50	124	15	85	12	1700	66	300
PAWRC030*	529247	9504764	30	0	2	2	3.17	2.83	0.33	7058	14367	1310	4904	698	206	504	63	334	59	148	18	88	13	1897	61	435
PAWRC031*	529334	9504824	30	0	17	17	2.46	2.18	0.28	5492	10847	1038	3841	572	168	429	53	283	50	128	16	84	12	1567	61	320

Notes:

1. Coordinate system UTM Zone 37S WGS84.
2. Holes **PAWRC001-005***, **PAWRC009-013*** and **PAWRC027-031*** are new intercepts (including re-assays for PAWRC001-005) being reported.
3. 1m assay undertaken by Genalysis assay labs in Perth Western Australia by peroxide fusion sample dissolution followed by ICPMS.
4. Intersections calculated using a 1% TREO lower cut with a 1m maximum internal dilution.
5. PAWRC005 17-18m and PAWRC006 4-5m sample lost. Waste value substituted
6. HREO Heavy Rare Earth includes Yttrium.

Table 2: Individual REO as a Percentage to Total REO (All 31 RC Holes)

REO-LIGHT = 90.61%					REO-HEAVY = 4.21%									Yttrium 5.18%
La ₂ O ₃	Ce ₂ O ₃	Pr ₂ O ₃	Nd ₂ O ₃	Sm ₂ O ₃	Eu ₂ O ₃	Gd ₂ O ₃	Tb ₂ O ₃	Dy ₂ O ₃	Ho ₂ O ₃	Er ₂ O ₃	Tm ₂ O ₃	Yb ₂ O ₃	Lu ₂ O ₃	Y ₂ O ₃
27.00	42.09	4.29	15.12	2.11	0.60	1.52	0.19	0.96	0.17	0.42	0.05	0.27	0.04	5.18

Notes:

1. Average relative REO components are calculated using individual Rare Earth grades in intersections using a 1% REO lower cut for all 31 RC holes in the drill program

Table 3: Mrima Hill RC Drill Results, +0.20% Niobium

Hole Id	CORDINATES			INTERCEPTS						
	East	North	Total Depth	From	To	Interval	Nb ₂ O ₅	MnO ₂	U	Th
	m	m	m	m	m	m	%	%	ppm	ppm
PAWRC001*	529001	9503867	32	5	8	3	0.36	16.5	10	482
PAWRC002*	529100	9503864	30	10	21	11	0.23	19.0	6	511
PAWRC003*	529259	9503836	30	23	30	7	0.45	20.2	6	373
PAWRC004*	529344	9503880	30	0	30	30	0.52	15.7	11	586
PAWRC005*	529295	9503964	21	0	21	21	0.30	15.1	16	456
PAWRC006	529282	9504050	47	3	43	40	0.49	11.2	10	733
PAWRC007	529142	9504233	40	5	30	25	0.78	13.6	24	776
PAWRC008	529250	9504196	30	0	30	30	0.47	13.6	8	482
PAWRC009*	529332	9504389	22	0	22	22	1.37	17.4	27	780
PAWRC010*	529292	9504441	27	0	21	21	1.01	15.0	25	925
PAWRC011*	529203	9504457	30	0	30	30	0.56	10.2	18	405
PAWRC012*	529143	9504478	30	0	30	30	0.82	5.9	20	457
			including	8	16	8	1.65	9.5	36	773
PAWRC013*	528853	9504497	30	0	14	14	0.58	9.2	38	310
PAWRC014	528829	9504578	12	0	12	12	0.58	9.0	34	313
PAWRC015	529036	9504486	30	0	7	7	0.49	13.6	38	292
			and	17	30	13	1.99	13.3	55	404
PAWRC016	529049	9504511	30	0	5	5	0.59	11.1	43	349
			and	17	30	13	2.11	15.0	72	534
PAWRC017	529105	9504529	30	0	30	30	0.87	10.9	83	474
PAWRC018	529162	9504563	30	0	10	10	0.42	7.9	30	466
PAWRC019	529236	9504580	43	0	43	43	0.72	12.9	83	796
PAWRC020	529254	9504591	30	0	13	13	0.94	12.0	55	478
			and	23	30	7	0.34	14.1	28	171
PAWRC021	529284	9504605	30	0	30	30	0.84	8.9	81	568
PAWRC022	529304	9504614	30	0	9	9	0.39	6.8	37	251
PAWRC023	529317	9504618	30	0	30	30	1.04	9.2	110	435
PAWRC024	528936	9504554	30	0	30	30	1.21	9.8	93	572
PAWRC025	528972	9504582	30	0	30	30	1.28	7.3	20	359
			including	27	30	3	3.94	7.1	8	265
PAWRC026	529063	9504672	30	0	29	29	1.14	8.7	26	290
PAWRC027*	529101	9504699	30	0	30	30	1.72	10.7	29	344
PAWRC028*	529161	9504729	50	0	13	13	0.64	4.3	26	166
			and	20	26	6	0.48	3.1	2	30
			and	32	37	5	0.52	2.7	2	84
PAWRC029*	529203	9504738	50	0	26	26	0.57	4.4	29	133
PAWRC030*	529247	9504764	30	0	8	8	0.37	4.5	22	161
PAWRC031*	529334	9504824	30	0	17	17	0.65	14.8	61	320

Notes:

1. Coordinate system UTM Zone 37S WGS84.
2. Holes **PAWRC001-005***, **PAWRC009-013*** and **PAWRC027-031*** are new intercepts (including re-assays for PAWRC001-005) being reported.
3. 1m assay undertaken by Genalysis assay labs in Perth Western Australia by peroxide fusion sample dissolution followed by ICPMS.
4. Intersections calculated using a 0.20% Nb₂O₅ lower cut with a maximum 2m internal dilution.
5. PAWRC005 17-18m and PAWRC006 4-5m sample lost. Waste value substituted