

APPENDIX:

Figure 1: NAP's gold properties illustrated on the simplified geological map of the area.

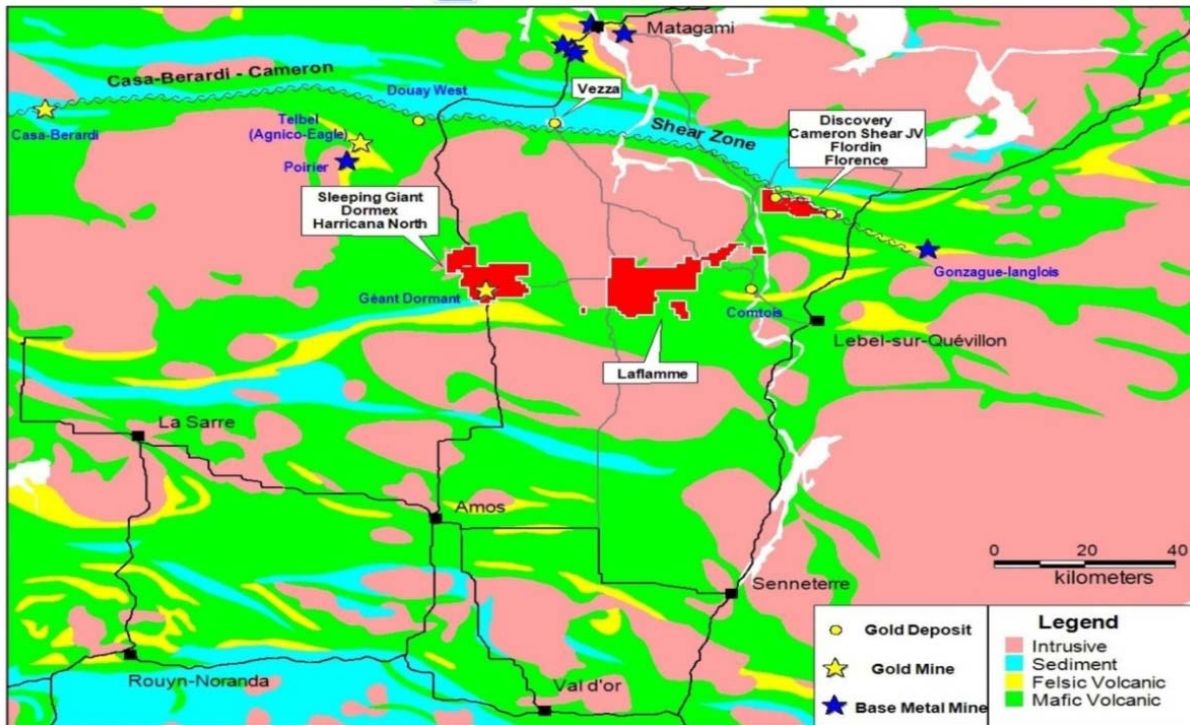


Figure 2: Vezza project. vertical section of the gold zone located at the contact between sedimentary and volcanic rocks. 2011 underground drilling results are shown in yellow, with the previous results in grey. Section 16540E.

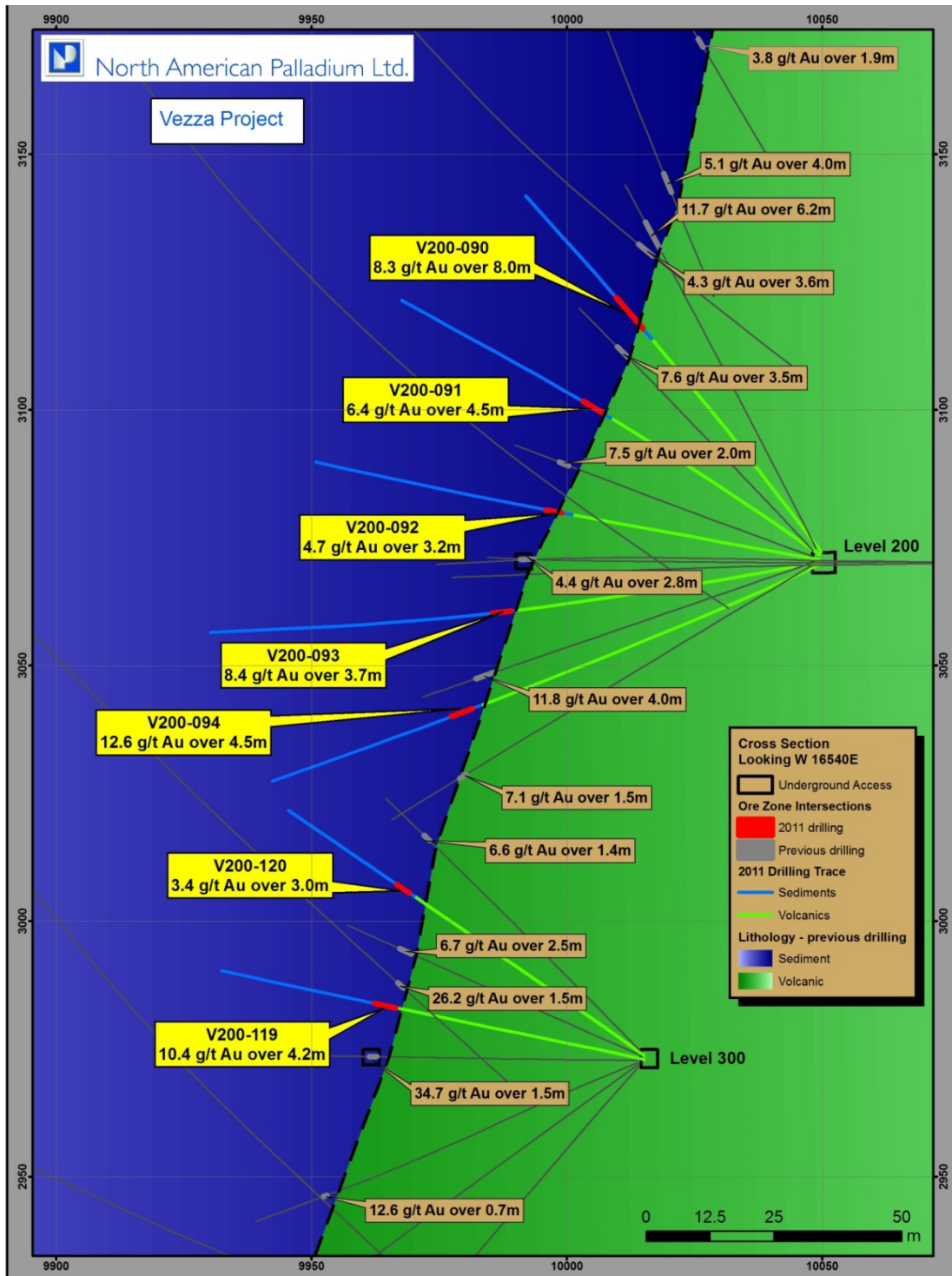


Figure 3: Sleeping Giant mine longitudinal section.

A composite vertical section of the Sleeping Giant gold mine showing the depth extensions of currently known zones, as well as significant new drill intersections. Level 1175 is the deepest of the three new levels being prepared for mining.

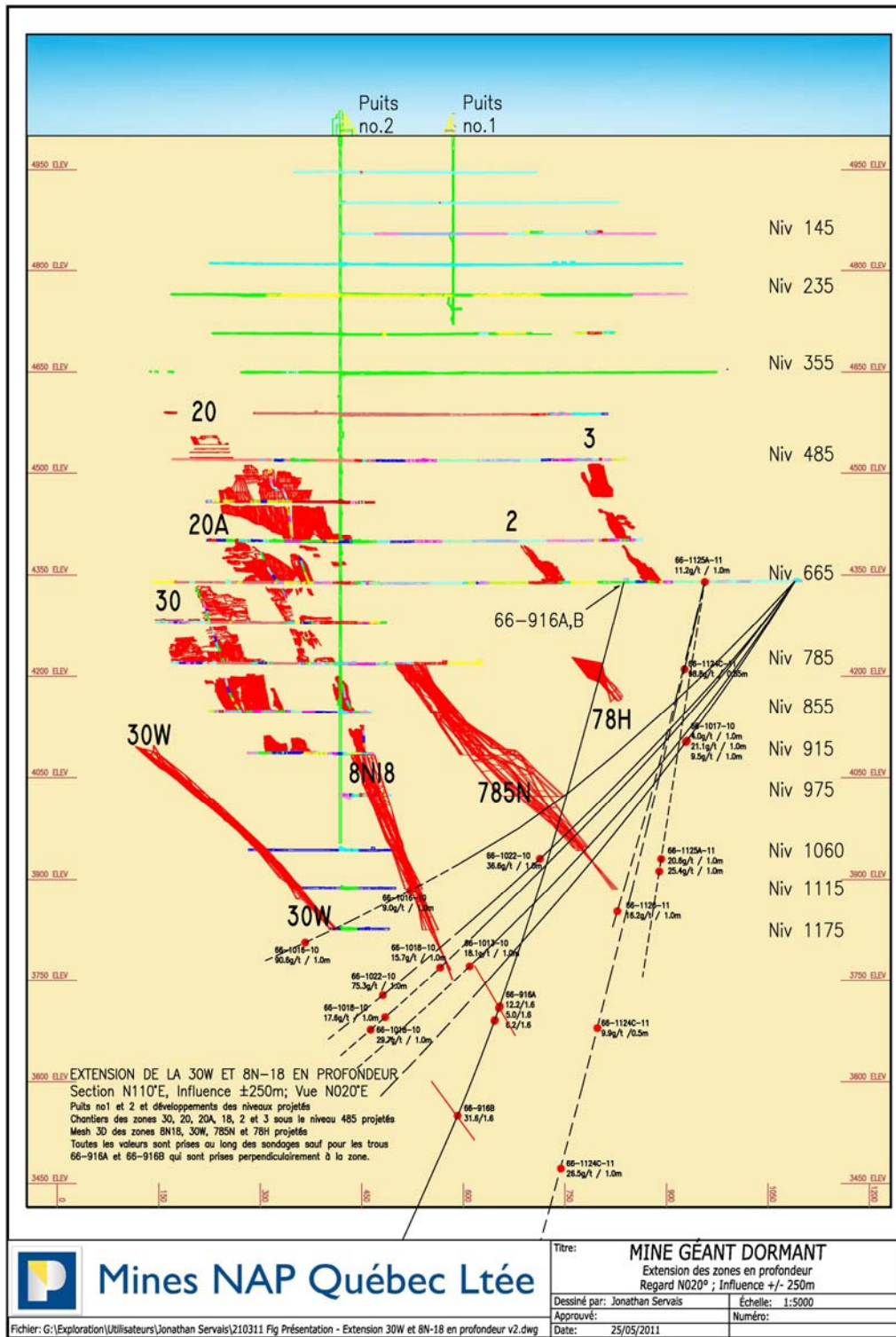


Figure 4: Flordin property outline showing the area of the current mineral resource estimate and the extent of recent drilling. (Each square is 1 kilometre long.)



Figure 5: Vertical longitudinal section of Discovery Zone 1200 East, looking northeast.

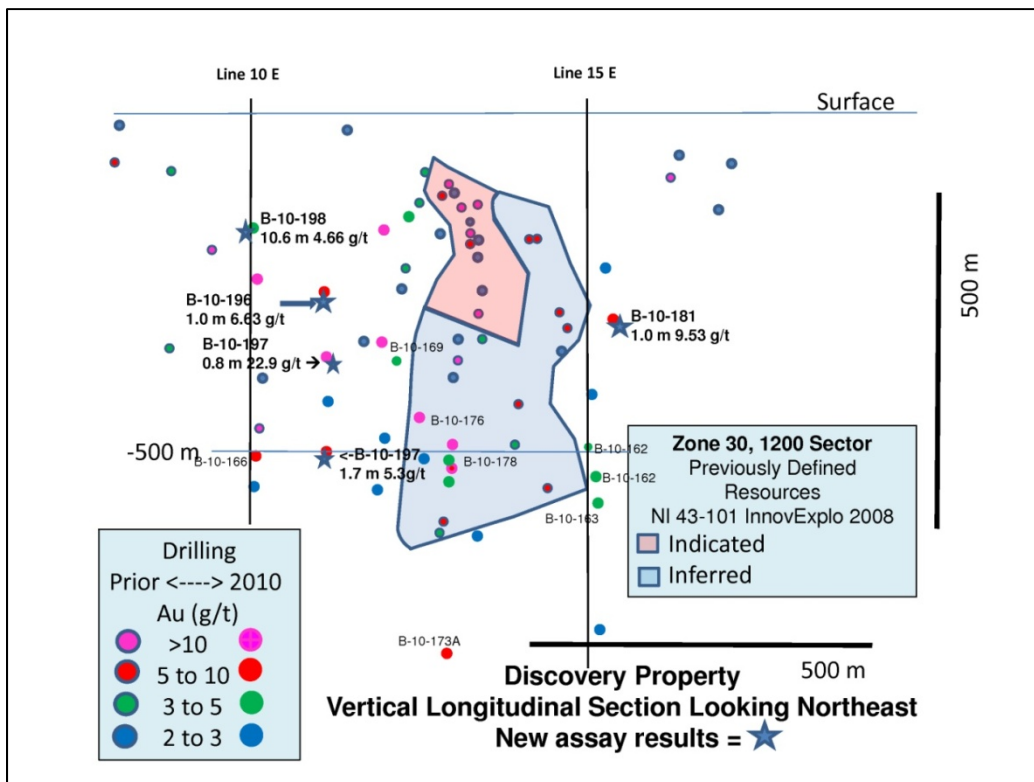


Figure 6: Laflamme property-scale geology as currently published with the locations of two significant new discoveries.

