

**Figure 1: Location of Drilling and Geological Mapping**

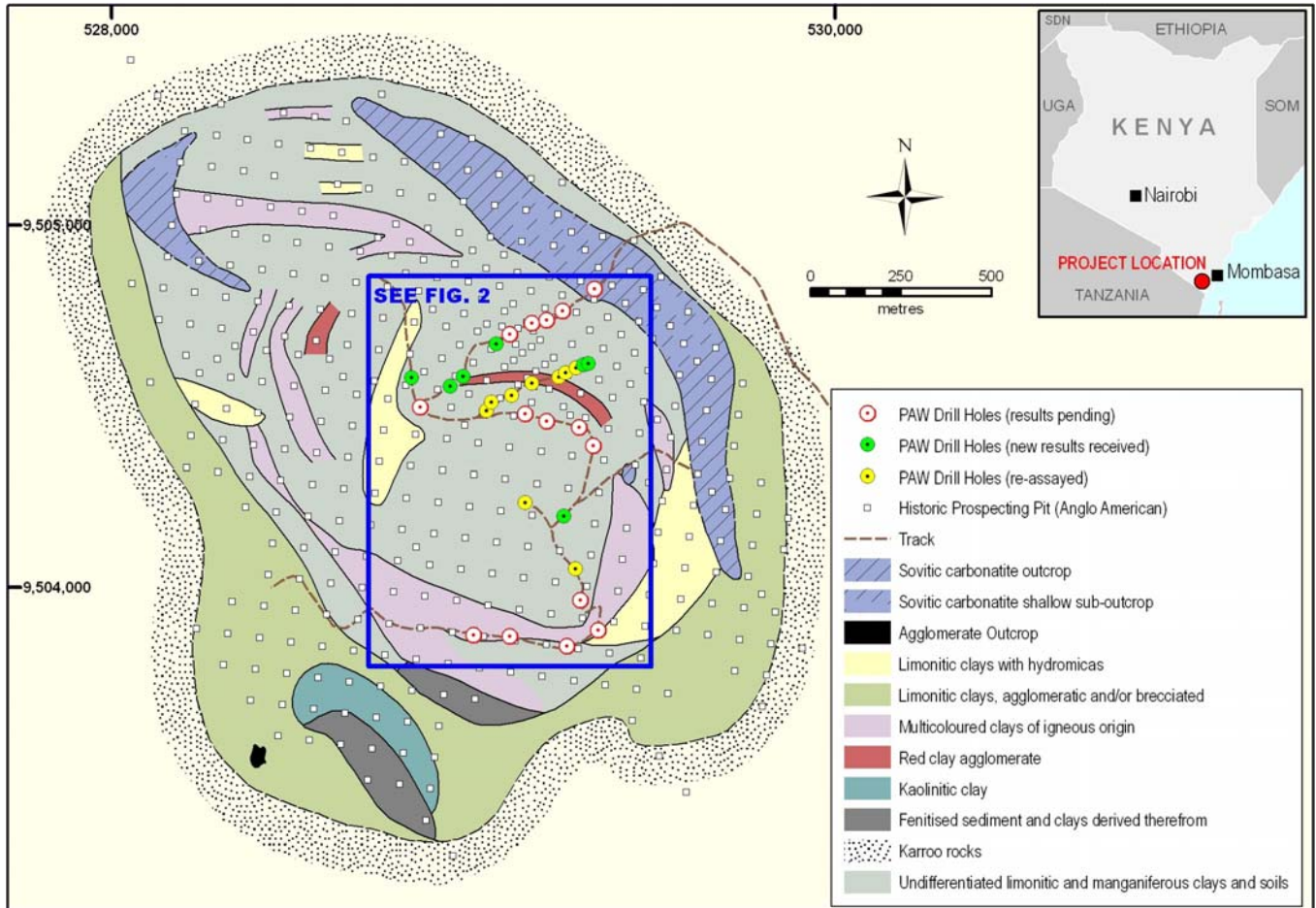
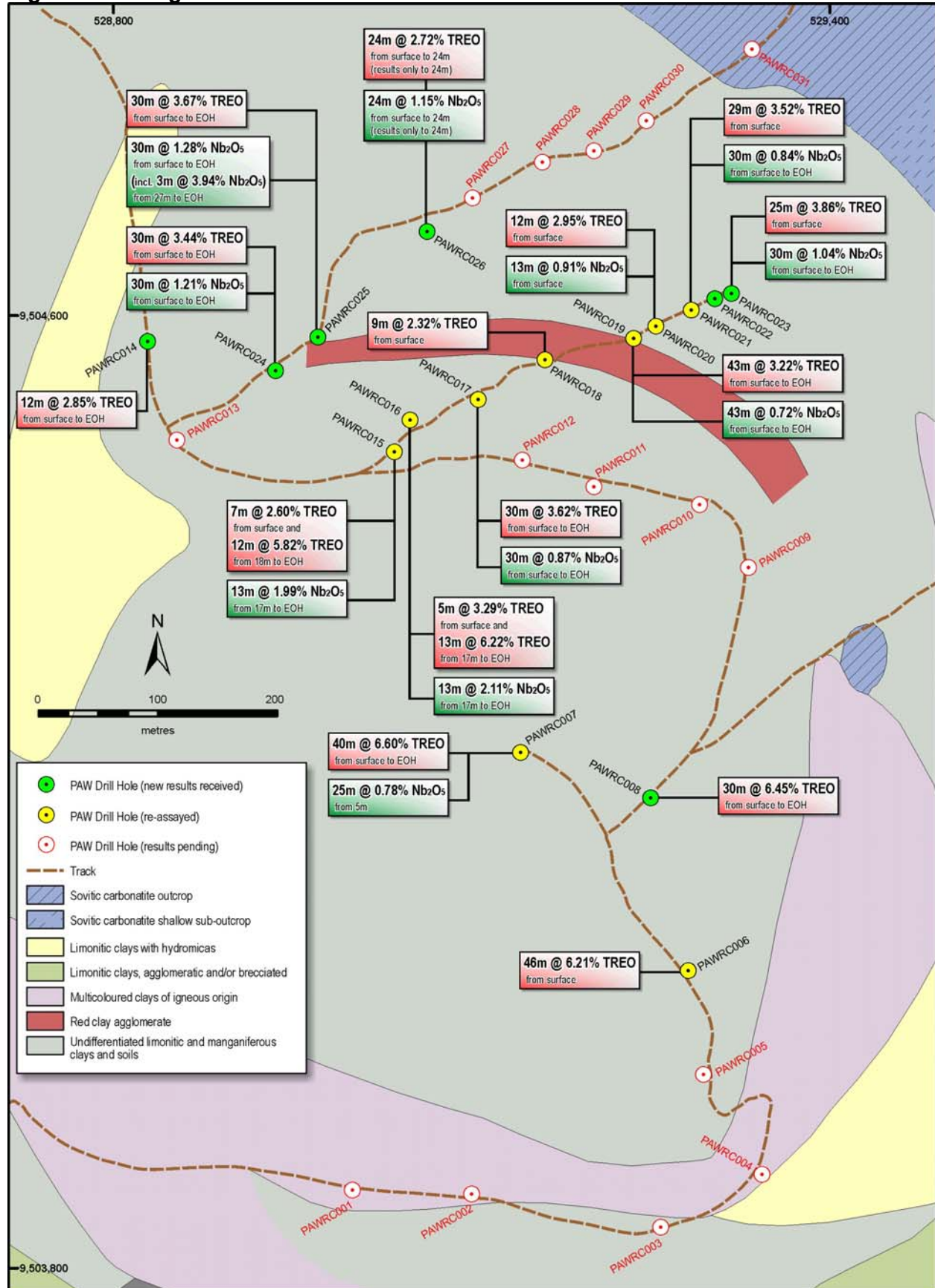


Figure 2: Drilling Results



**Table 1: Mrima Hill RC Drill Results +1% Rare Earth Oxides (including yttrium)**

Hole Id	COORDINATES			INTERCEPTS			REO-LIGHT								REO-HEAVY										U	Th	
	East	North	Total Depth	From	To	Interval	Total REO	LREO	HREO	La <sub>2</sub> O <sub>3</sub>	Ce <sub>2</sub> O <sub>3</sub>	Pr <sub>2</sub> O <sub>3</sub>	Nd <sub>2</sub> O <sub>3</sub>	Sm <sub>2</sub> O <sub>3</sub>	Eu <sub>2</sub> O <sub>3</sub>	Gd <sub>2</sub> O <sub>3</sub>	Tb <sub>2</sub> O <sub>3</sub>	Dy <sub>2</sub> O <sub>3</sub>	Ho <sub>2</sub> O <sub>3</sub>	Er <sub>2</sub> O <sub>3</sub>	Tm <sub>2</sub> O <sub>3</sub>	Yb <sub>2</sub> O <sub>3</sub>	Lu <sub>2</sub> O <sub>3</sub>	Y <sub>2</sub> O <sub>3</sub>			
	m	m	m	m	m	m	%	%	%	ppm	ppm	ppm	ppm	ppm	ppm	ppm	ppm	ppm	ppm	ppm	ppm	ppm	ppm	ppm			ppm
PAWRC001	529001	9503867		32																							
PAWRC002	529100	9503864		30																							
PAWRC003	529259	9503836		30																							
PAWRC004	529344	9503880		30																							
PAWRC005	529295	9503964		21																							
PAWRC006	529282	9504050		47	0	46	46	6.21	5.86	0.35	19764	26349	2571	8873	1065	290	691	80	367	58	140	16	85	11	1745	10	684
PAWRC007	529142	9504233		40	0	40	40	6.60	6.06	0.54	20775	25303	2840	10290	1398	418	1145	146	672	98	217	26	139	17	2504	23	822
PAWRC008	529250	9504196		30	0	30	30	6.45	6.19	0.26	20842	27981	2795	9305	997	239	515	53	236	40	101	13	75	11	1313	8	482
PAWRC009	529332	9504389		22																							
PAWRC010	529292	9504441		27																							
PAWRC011	529203	9504457		30																							
PAWRC012	529143	9504478		30																							
PAWRC013	528853	9504497		30																							
PAWRC014	528829	9504578		12	0	12	12	2.85	2.57	0.28	7274	12375	1194	4218	594	175	434	60	307	54	131	16	83	11	1553	34	313
PAWRC015	529036	9504486		30	0	7	7	2.60	2.42	0.18	5822	12525	1108	4163	608	173	384	47	212	32	73	9	49	7	821	38	343
			and	18	30	12		5.82	5.47	0.35	14759	26597	2652	9429	1275	355	814	100	456	67	144	17	83	10	1418	55	404
PAWRC016	529049	9504511		30	0	5	5	3.29	3.07	0.22	7620	14515	1584	6163	865	241	530	65	286	39	82	10	53	7	861	43	349
			and	17	30	13		6.22	5.68	0.54	14175	27245	2954	10840	1607	464	1112	151	741	117	249	28	138	16	2401	72	534
PAWRC017	529105	9504529		30	0	30	30	3.62	2.76	0.86	6705	13387	1431	5284	813	247	680	105	651	149	426	55	281	41	5974	83	474
PAWRC018	529162	9504563		30	0	9	9	2.31	2.15	0.17	5057	11848	930	3178	441	126	302	38	186	31	72	9	48	7	862	31	472
PAWRC019	529236	9504580		43	0	43	43	3.22	2.55	0.67	6913	12123	1225	4469	726	230	605	95	526	114	337	41	222	31	4515	83	796
PAWRC020	529254	9504591		30	0	12	12	2.95	2.61	0.34	6597	12811	1271	4684	721	215	527	74	354	60	151	17	95	13	1927	55	478
PAWRC021	529284	9504605		30	0	29	29	3.52	2.89	0.62	7894	13837	1383	5034	774	237	631	99	560	115	309	35	181	25	4044	79	575
PAWRC022	529304	9504614		30	0	5	5	2.21	1.96	0.25	4851	9775	938	3464	563	171	433	59	275	46	120	15	86	11	1324	55	387
PAWRC023	529317	9504618		30	0	25	25	3.86	2.99	0.87	7658	13989	1540	5817	921	278	862	130	798	165	446	56	319	40	5567	125	463
			and	28	30	2		2.45	2.05	0.40	4853	9463	1071	4343	778	240	651	90	418	73	184	20	99	10	2197	33	413
PAWRC024	528936	9504554		30	0	30	30	3.44	2.87	0.56	7219	13522	1485	5568	908	281	832	118	612	113	283	36	212	26	3136	93	672
PAWRC025	528972	9504582		30	0	30	30	3.67	3.30	0.36	8479	15876	1650	6095	924	258	687	84	357	61	163	19	106	13	1887	20	359
PAWRC026	529063	9504672		30	0	24	24	2.72	2.43	0.29	5951	11836	1239	4613	678	188	518	64	284	50	132	16	88	11	1501	30	304
PAWRC027	529101	9504699		30																							
PAWRC028	529161	9504729		50																							
PAWRC029	529203	9504738		50																							
PAWRC030	529247	9504764		30																							
PAWRC031	529334	9504824		30																							

**Notes:**

1. Coordinate system UTM Zone 37S WGS84.
2. 1m assay undertaken by Genalysis assay labs in Perth Western Australia by peroxide fusion sample dissolution followed by ICPMS.
3. Intersections calculated using a 1% TREO lower cut with a 1m maximum internal dilution.
4. PAWRC006 4-5m sample lost. Waste value substituted.
5. PAWRC026 Results available for 0-24m only
6. HREO1 Heavy Rare Earth includes Yttrium.

**Table 2: Individual REO as a Percentage to Total REO (first 16 RC hole results)**

REO-LIGHT = 88.66%					REO-HEAVY = 4.76%									Yttrium 6.58%
La <sub>2</sub> O <sub>3</sub>	Ce <sub>2</sub> O <sub>3</sub>	Pr <sub>2</sub> O <sub>3</sub>	Nd <sub>2</sub> O <sub>3</sub>	Sm <sub>2</sub> O <sub>3</sub>	Eu <sub>2</sub> O <sub>3</sub>	Gd <sub>2</sub> O <sub>3</sub>	Tb <sub>2</sub> O <sub>3</sub>	Dy <sub>2</sub> O <sub>3</sub>	Ho <sub>2</sub> O <sub>3</sub>	Er <sub>2</sub> O <sub>3</sub>	Tm <sub>2</sub> O <sub>3</sub>	Yb <sub>2</sub> O <sub>3</sub>	Lu <sub>2</sub> O <sub>3</sub>	Y <sub>2</sub> O <sub>3</sub>
26.05	41.01	4.23	15.23	2.14	0.62	1.62	0.22	1.11	0.20	0.53	0.06	0.35	0.05	6.58

Notes:

1. Average relative REO components are calculated using individual rare earth grades in intersections using a 1% REO lower cut in the 16 RC holes reported on in this Announcement.

**Table 3: Mrima Hill RC Drill Results, +0.20% Niobium**

Hole Id	CORDINATES			INTERCEPTS						
	East	North	Total Depth	From	To	Interval	Nb <sub>2</sub> O <sub>5</sub>	MnO <sub>2</sub>	U	Th
	m	m	m	m	m	m	%	%	ppm	ppm
PAWRC001	529001	9503867	32							
PAWRC002	529100	9503864	30							
PAWRC003	529259	9503836	30							
PAWRC004	529344	9503880	30							
PAWRC005	529295	9503964	21							
PAWRC006	529282	9504050	47	3	43	40	0.49	11.2	10	733
PAWRC007	529142	9504233	40	5	30	25	0.78	13.6	24	776
PAWRC008	529250	9504196	30	0	30	30	0.47	13.6	8	482
PAWRC009	529332	9504389	22							
PAWRC010	529292	9504441	27							
PAWRC011	529203	9504457	30							
PAWRC012	529143	9504478	30							
PAWRC013	528853	9504497	30							
PAWRC014	528829	9504578	12	0	12	12	0.58	9.0	34	313
PAWRC015	529036	9504486	30	0	7	7	0.49	13.6	38	292
			and	17	30	13	1.99	13.3	55	404
PAWRC016	529049	9504511	30	0	5	5	0.59	11.1	43	349
			and	17	30	13	2.11	15.0	72	534
PAWRC017	529105	9504529	30	0	30	30	0.87	10.9	83	474
PAWRC018	529162	9504563	30	0	10	10	0.42	7.9	30	466
PAWRC019	529236	9504580	43	0	43	43	0.72	12.9	83	796
PAWRC020	529254	9504591	30	0	13	13	0.91	11.9	55	478
			and	23	30	7	0.34	14.1	28	171
PAWRC021	529284	9504605	30	0	30	30	0.84	8.9	81	568
PAWRC022	529304	9504614	30	0	9	9	0.39	6.8	37	251
PAWRC023	529317	9504618	30	0	30	30	1.04	9.2	110	435
PAWRC024	528936	9504554	30	0	30	30	1.21	9.8	93	572
PAWRC025	528972	9504582	30	0	30	30	1.28	7.3	20	359
			including	27	30	3	3.94	7.1	8	265
PAWRC026	529063	9504672	30	0	24	24	1.15	8.2	30	304
PAWRC027	529101	9504699	30							
PAWRC028	529161	9504729	50							
PAWRC029	529203	9504738	50							
PAWRC030	529247	9504764	30							
PAWRC031	529334	9504824	30							

**Notes:**

1. Coordinate system UTM Zone 37S WGS84.
2. 1m assay undertaken by Genalysis assay labs in Perth Western Australia by peroxide fusion sample dissolution followed by ICPMS.
3. Intersections calculated using a 0.20% Nb<sub>2</sub>O<sub>5</sub> lower cut with a maximum 2m internal dilution.
4. PAWRC006 4-5m sample lost. Waste value substituted.
5. PAWRC026 Results available for 0-24m only