

264500

265000

265500

266000

8707000

8707000

8706500

8706500

8706000

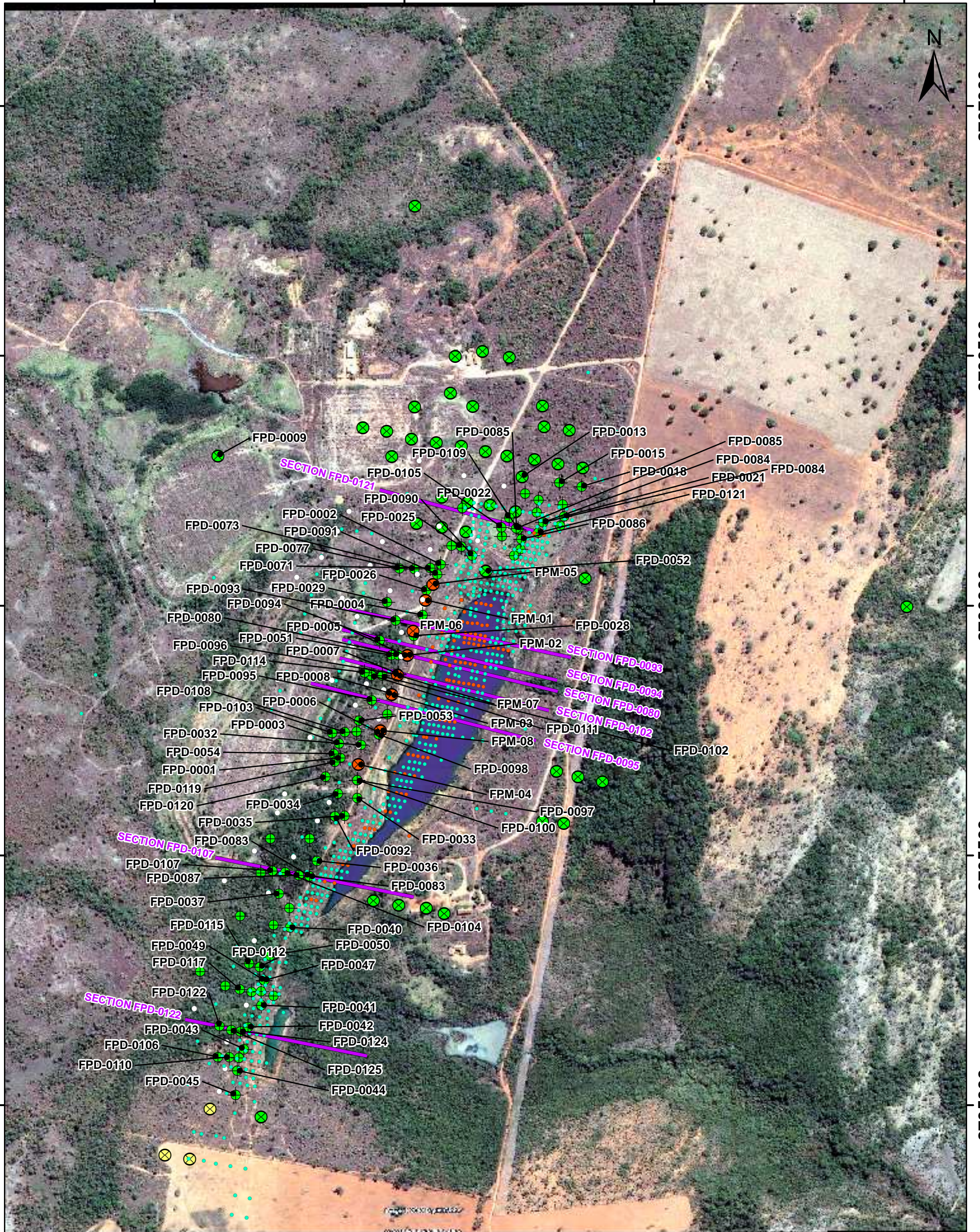
8706000

8705500

8705500

8705000

8705000



264500

265000

265500

266000

- | | |
|-------------------------|-----------|
| Drilling | Drilling |
| Type/Status | • METAGO |
| ● Extension/Executed | ○ MSE |
| ● Extension/In Progress | ● VALE |
| ● Extension/Programmed | — Section |
| ● In Fill/Executed | |
| ● In Fill/In Progress | |
| ● In Fill/Programmed | |
| ● Metal | |

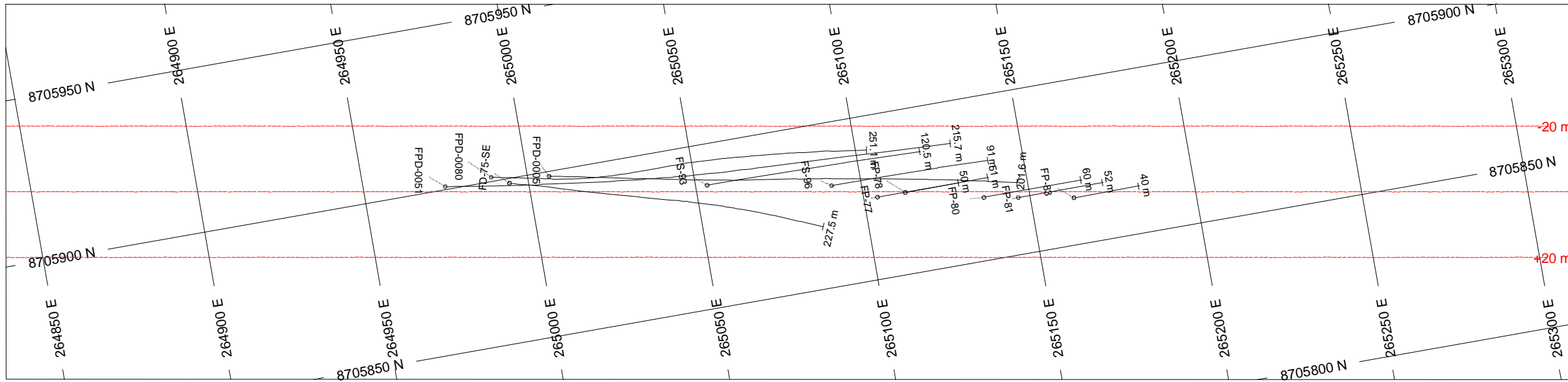


1:7500
 0 75 150 225 m

**ALMAS PROJECT
 ALMAS
 TOCANTINS STATE**

DRILLING AND
 GOOGLE EARTH MAP
 PAIOL TARGET

SAD69 - UTM 23S
 SOURCE: RIO NOVO GOLD, ANEEL,
 IBGE, ANA, CPRM
 DATE: 2011/01/12

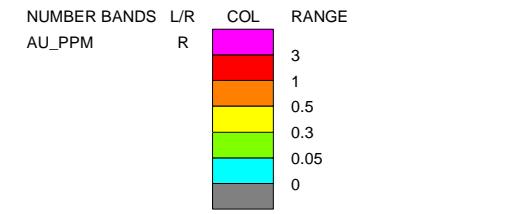
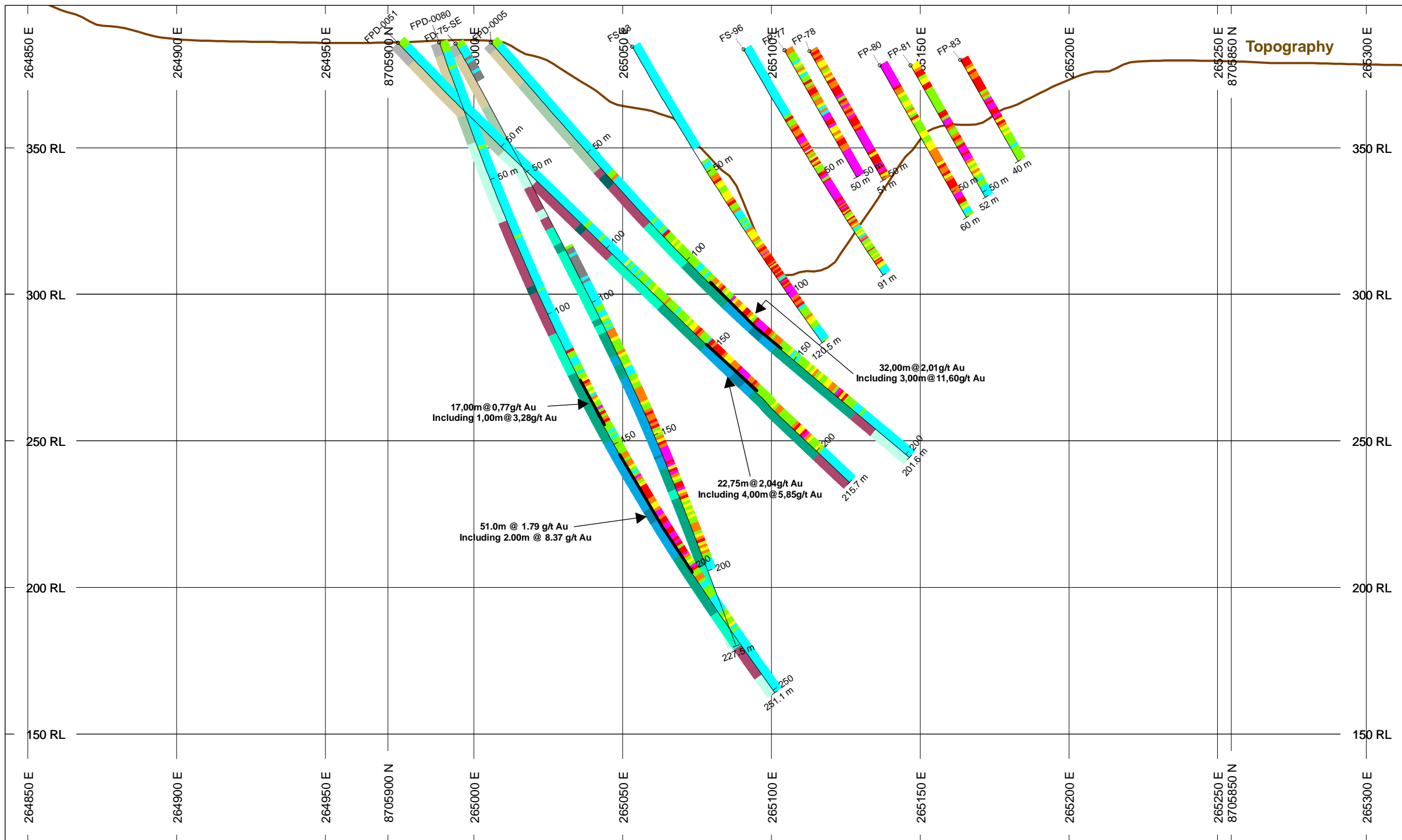


HOLES PLOTTED

TOTAL 11

FD-75-SE	FP-77	FP-78	FP-80
FP-81	FP-83	FPD-0005	FPD-0051
FPD-0080	FS-93	FS-96	

**SECTION FPD-0080
PAIOL TARGET
ALMAS PROJECT**

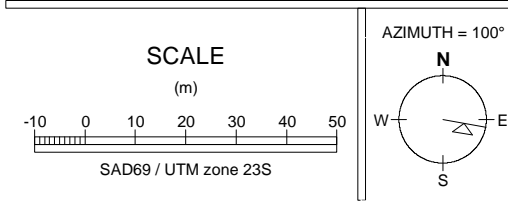


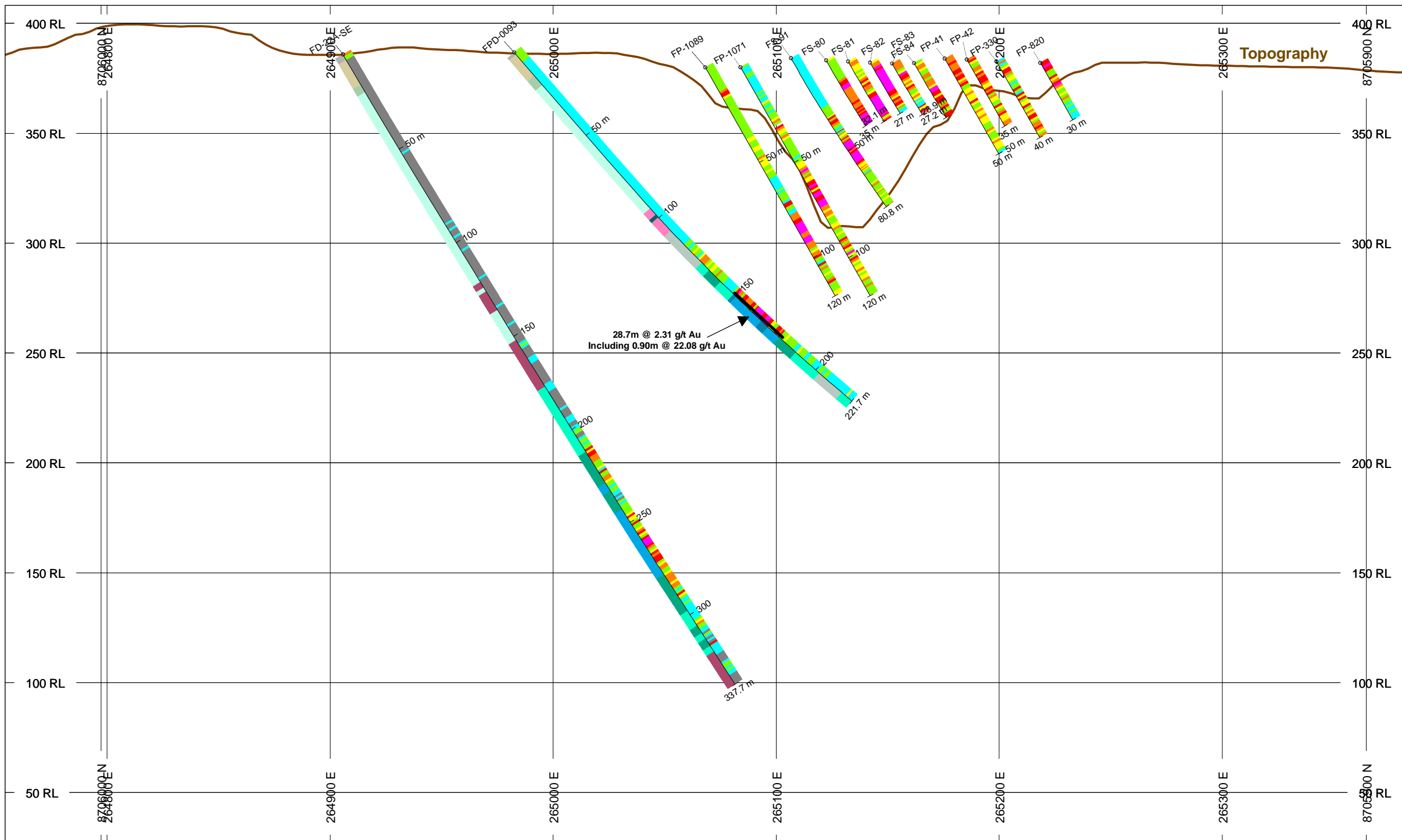
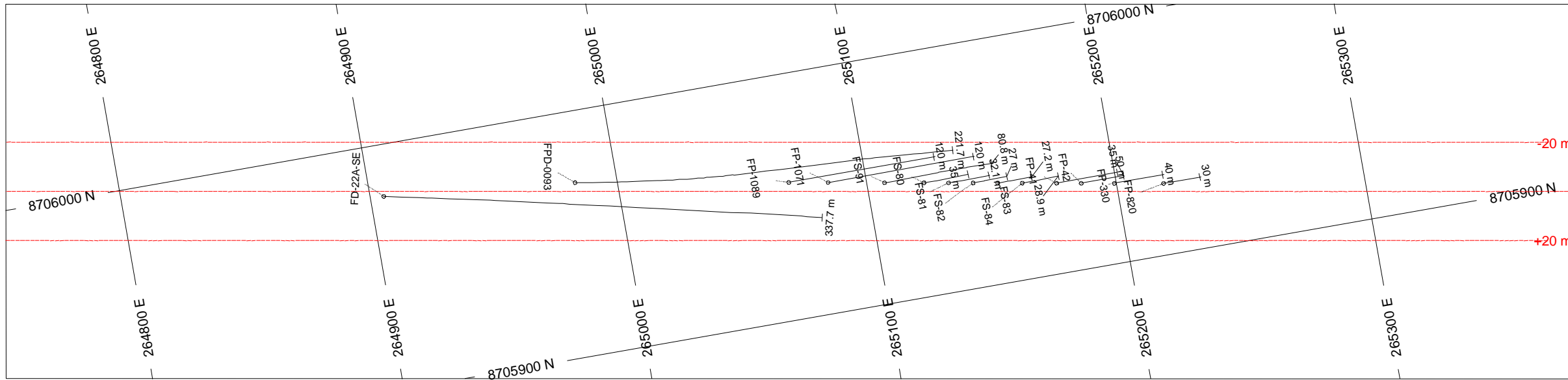
ROCK CODES	PAT	LABEL	DESCRIPTION
Rock_Code		SO	Soil
		SP	Saprolite
		RI	Weathered Rock
		CAAX	Chlorite-Albite-Amphibole Schists
		SDCX	Sericite-ankerite-chlorite Schists
		SCDX	Sericite-chlorite-Ankerite Schists
		SDQX	Sericite-Ankerite-Quartz Schists
		ADQX	Albite-Ankerite-Quartz Schists
		CCQX	Calcite-Chlorite-Quartz Schist
		RSI	Semi Weathered Rock
		QSCXb	

POSTED TEXT	L/R	TEXT	ITEMS
AU_PPM_Labels	R	-----	All
Rock_Code	L	-----	All

SECTION SPECS:

REF. PT. E, N	265079 m	8705881 m
EXTENTS	480.2 m	286.1 m
SECTION TOP, BOT	398.6 m	112.5 m
TOLERANCE +/-		20 m





HOLES PLOTTED

TOTAL 14

FD-22A-SE	FP-1071	FP-1089	FP-330
FP-41	FP-42	FP-820	FPD-0093
FS-80	FS-81	FS-82	FS-83
FS-84	FS-91		

**SECTION FPD-0093
PAIOL TARGET
ALMAS PROJECT**

NUMBER BANDS	L/R	COL	RANGE
AU_PPM	R		3
			1
			0.5
			0.3
			0.05
			0

ROCK CODES	PAT	LABEL	DESCRIPTION
Rock_Code		SO	Soil
		SP	Saprolite
		RI	Weathered Rock
		CAAX	Chlorite-Albite-Amphibole Schists
		SDCX	Sericite-ankerite-chlorite Schists
		SCDX	Sericite-chlorite-Ankerite Schists
		SDQX	Sericite-Ankerite-Quartz Schists
		ADQX	Albite-Ankerite-Quartz Schists
		CCQX	Calcite-Chlorite-Quartz Schist
		CQCX	Carbonate-Quartz-Chlorite Schist
		CQSX	Chlorite-Quartz-Sericite Schist
		QSCXb	

POSTED TEXT	L/R	TEXT	ITEMS
AU_PPM_Labels	R	-----	All
Rock_Code	L	-----	All

SECTION SPECS:

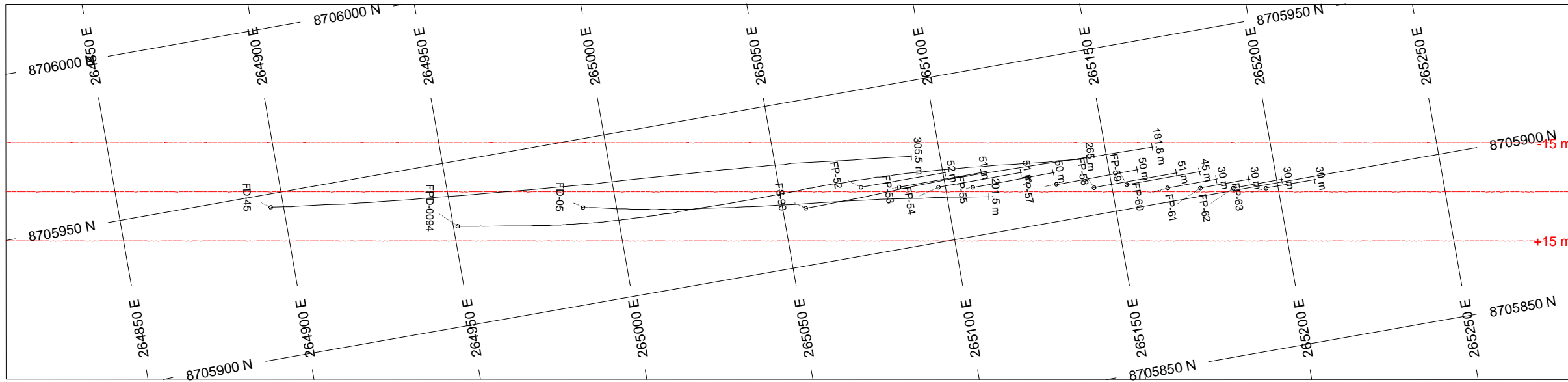
REF. PT. E, N	265070 m	8705952 m
EXTENTS	640.2 m	381.4 m
SECTION TOP, BOT	408.1 m	26.7 m
TOLERANCE +/-	20 m	

SCALE

(m)

SAD69 / UTM zone 23S

AZIMUTH = 100°

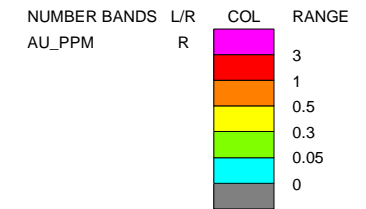
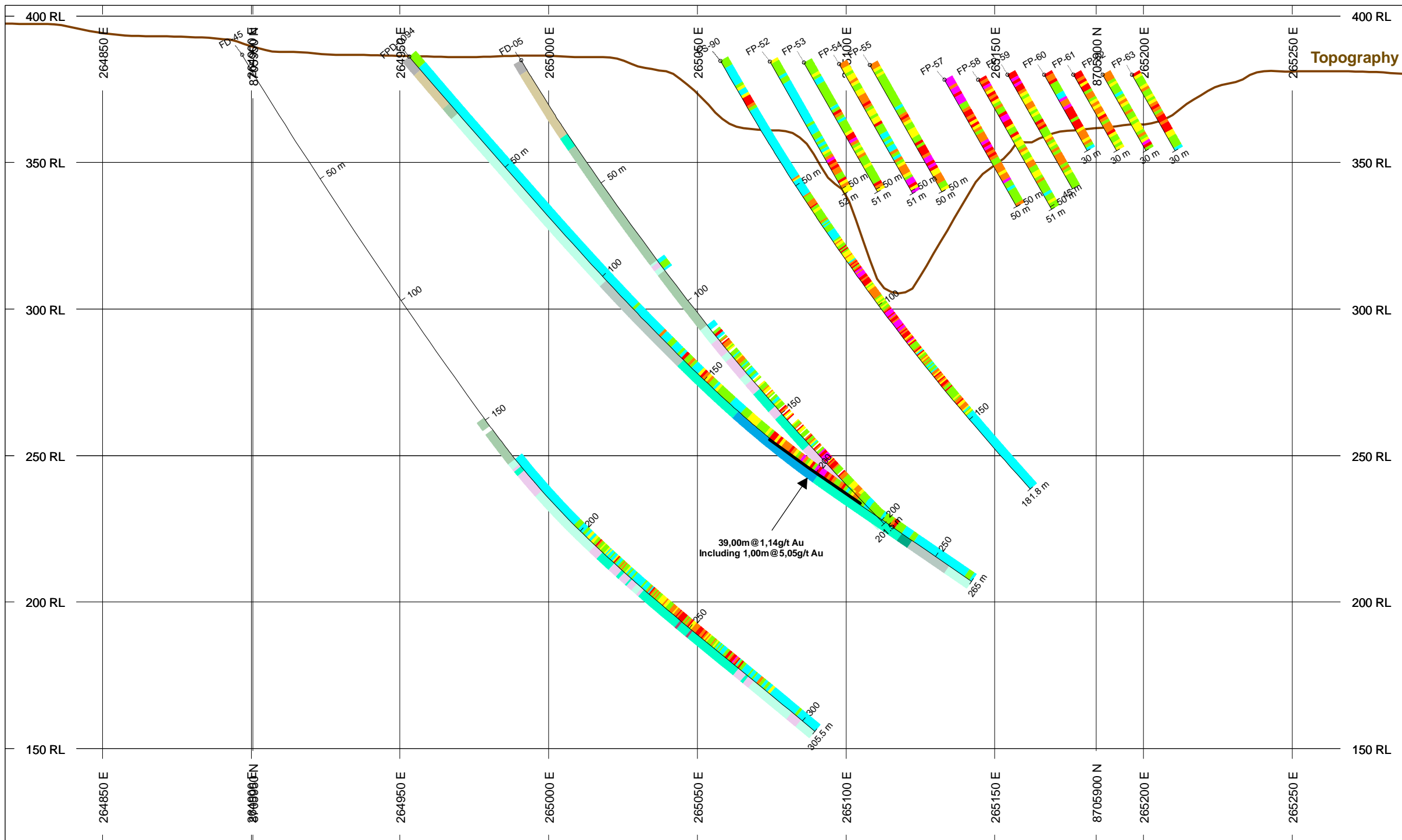


HOLES PLOTTED

TOTAL 15

FD-05	FD-45	FP-52	FP-53
FP-54	FP-55	FP-57	FP-58
FP-59	FP-60	FP-61	FP-62
FP-63	FPD-0094	FS-90	

**SECTION FPD-0094
PAIOL TARGET
ALMAS PROJECT**

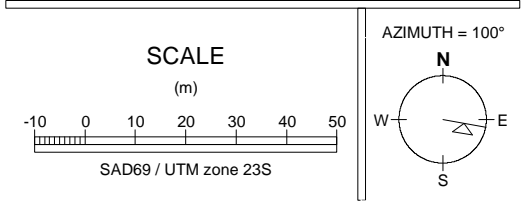


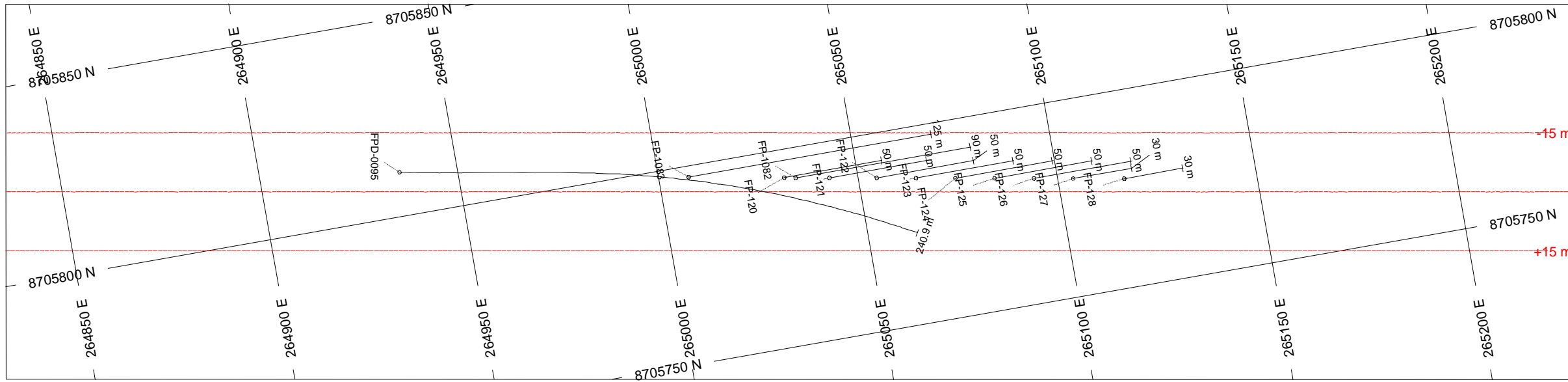
ROCK CODES	PAT	LABEL	DESCRIPTION
Rock_Code		SO	Soil
		SP	Saprolite
		RI	Weathered Rock
		CAAX	Chlorite-Albite-Amphibole Schists
		SDCX	Sericite-ankerite-chlorite Schists
		SCDX	Sericite-chlorite-Ankerite Schists
		SDQX	Sericite-Ankerite-Quartz Schists
		CCQX	Calcite-Chlorite-Quartz Schist
		CQCX	Carbonate-Quartz-Chlorite Schist
		DCQX	Dolomite-Chlorite-Quartz Schist
		RSI	Semi Weathered Rock

POSTED TEXT	L/R	TEXT	ITEMS
AU_PPM_Labels	R	-----	All
Rock_Code	L	-----	All

SECTION SPECS:

REF. PT. E, N	265054 m	8705923 m
EXTENTS	480.2 m	286.1 m
SECTION TOP, BOT	403.6 m	117.5 m
TOLERANCE +/-	15 m	



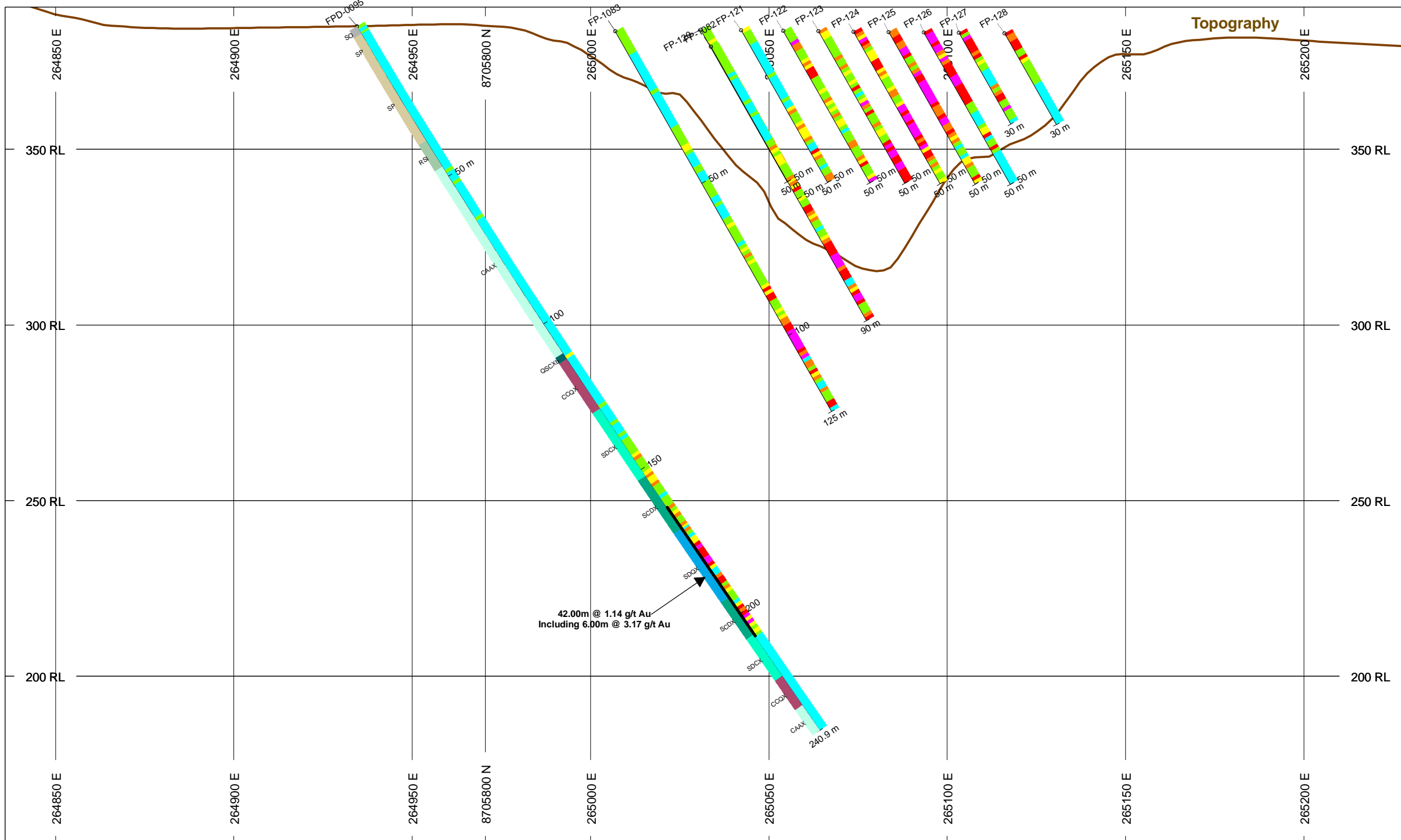


HOLES PLOTTED

TOTAL 12

FP-1082	FP-1083	FP-120	FP-121
FP-122	FP-123	FP-124	FP-125
FP-126	FP-127	FP-128	FPD-0095

**SECTION FPD-0095
PAIOL TARGET
ALMAS PROJECT**



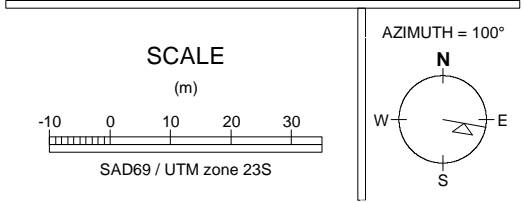
NUMBER BANDS	L/R	COL	RANGE
AU_PPM	R		3
			1
			0.5
			0.3
			0.05
			0

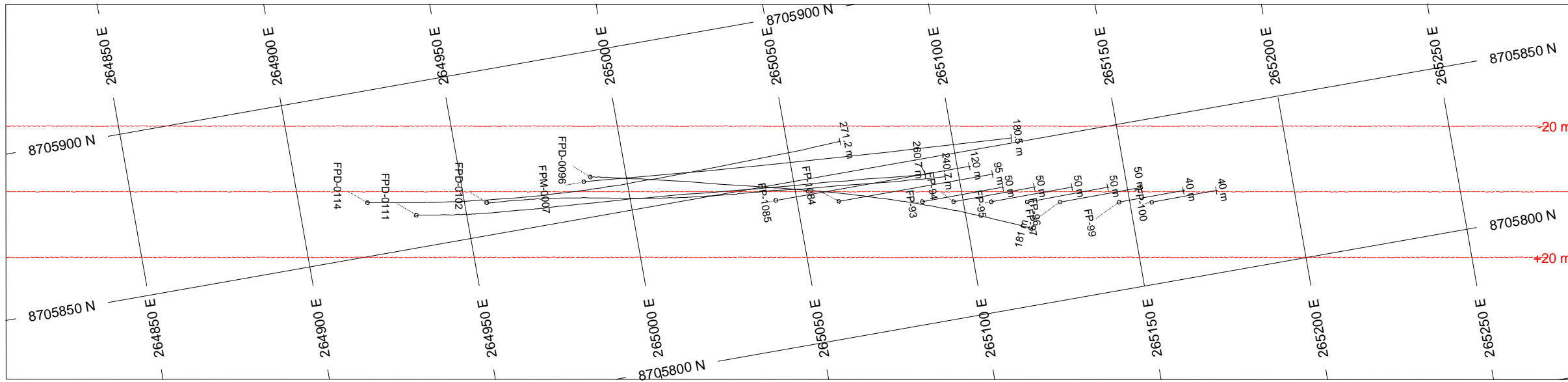
ROCK CODES	PAT	LABEL	DESCRIPTION
Rock_Code	SO	SO	Soil
	SP	SP	Saprolite
	CAAX	CAAX	Chlorite-Albite-Amphybole Schists
	SDCX	SDCX	Sericite-ankerite-chlorite Schists
	SCDX	SCDX	Sericite-chlorite-Ankerite Schists
	SDQX	SDQX	Sericite-Ankerite-Quartz Schists
	CCQX	CCQX	Calcite-Chlorite-Quartz Schist
	RSI	RSI	Semi Weathered Rock
	QSCXb	QSCXb	

POSTED TEXT	L/R	TEXT	ITEMS
AU_PPM_Labels	R	-----	All
Rock_Code	L	-----	All

SECTION SPECS:

REF. PT. E, N	265033 m	8705789 m
EXTENTS	400.1 m	238.4 m
SECTION TOP, BOT	390.4 m	152 m
TOLERANCE +/-	15 m	



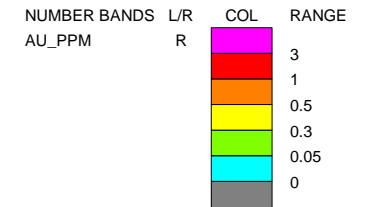
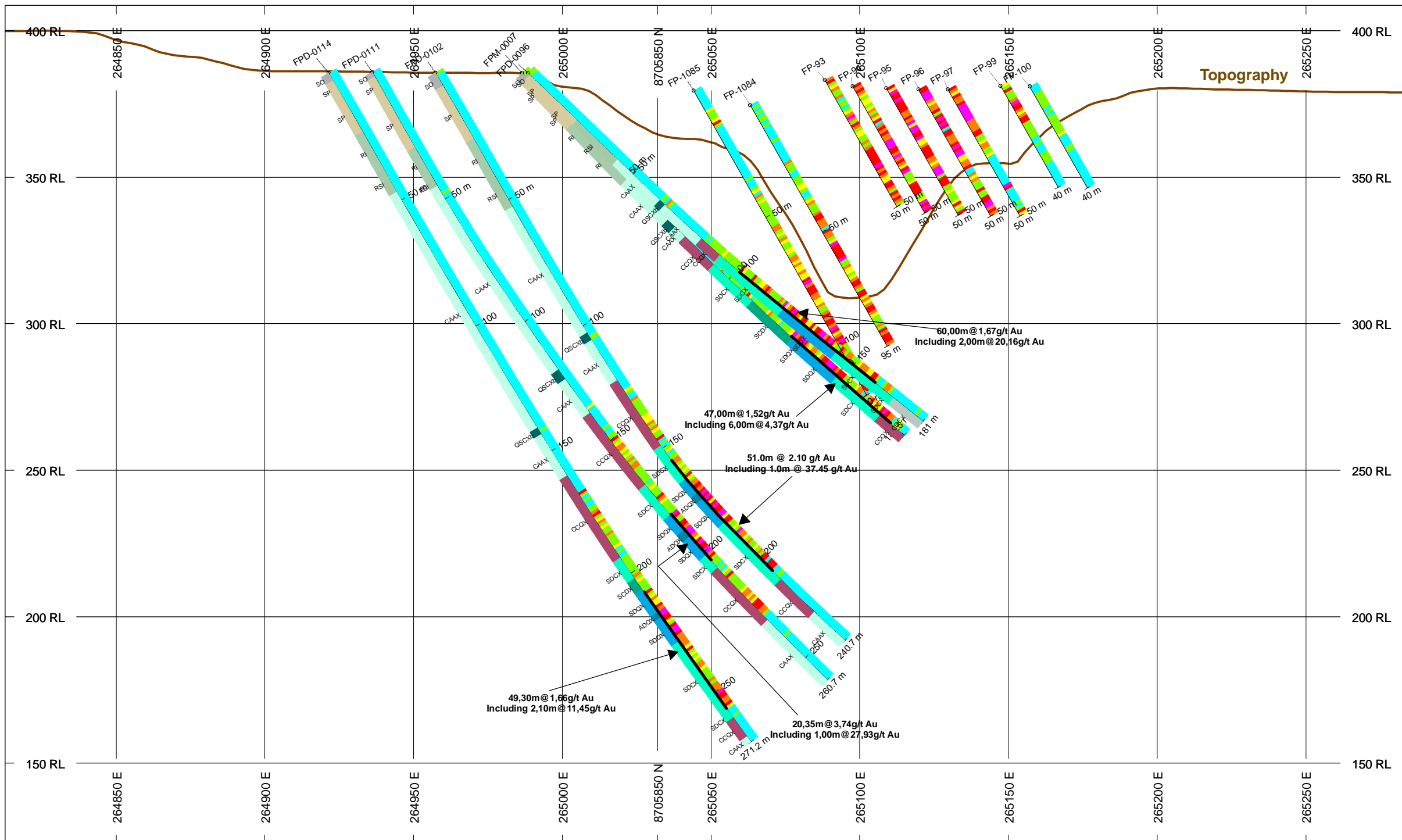


HOLES PLOTTED

TOTAL 14

FP-100	FP-1084	FP-1085	FP-93
FP-94	FP-95	FP-96	FP-97
FP-99	FPM-0096	FPD-0102	FPD-0111
FPD-0114	FPM-0007		

**SECTION FPD-0102
PAIOL TARGET
ALMAS PROJECT**

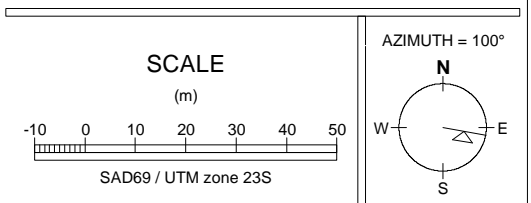


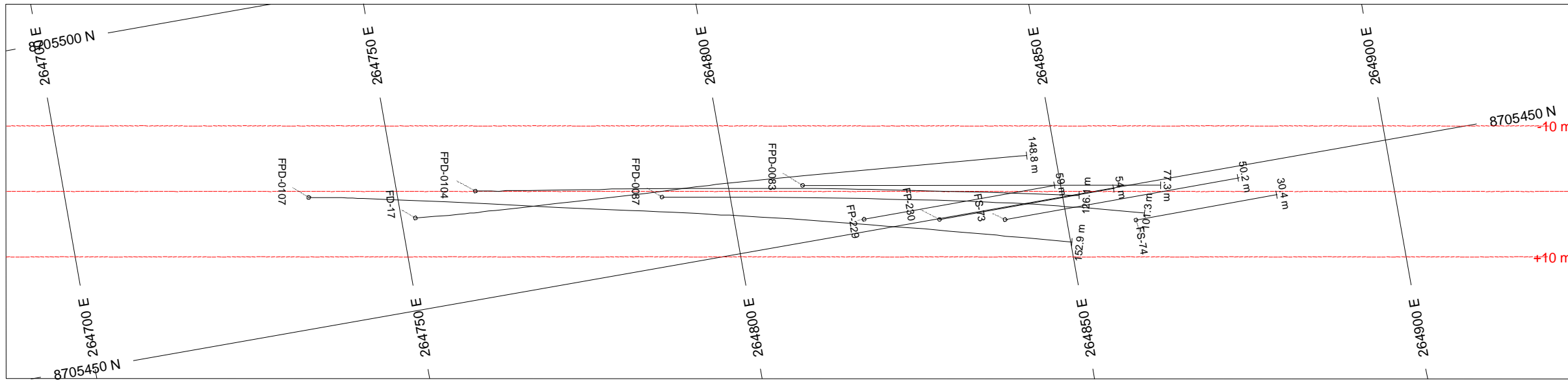
ROCK CODES	PAT	LABEL	DESCRIPTION
Rock_Code	SO	Soil	Soil
	SP	Saprolite	Saprolite
	RI	Weathered Rock	Weathered Rock
	CAAX	Chlorite-Albite-Amphybole Schists	Chlorite-Albite-Amphybole Schists
	SDCX	Sericite-ankerite-chlorite Schists	Sericite-ankerite-chlorite Schists
	SCDX	Sericite-chlorite-Ankerite Schists	Sericite-chlorite-Ankerite Schists
	SDQX	Sericite-Ankerite-Quartz Schists	Sericite-Ankerite-Quartz Schists
	ADQX	Albite-Ankerite-Quartz Schists	Albite-Ankerite-Quartz Schists
	CCQX	Calcite-Chlorite-Quartz Schist	Calcite-Chlorite-Quartz Schist
	CQCX	Carbonate-Quartz-Chlorite Schist	Carbonate-Quartz-Chlorite Schist
	RSI	Semi Weathered Rock	Semi Weathered Rock
	QSCXb	Quartz-Chlorite-Sericite Schist Breccia	Quartz-Chlorite-Sericite Schist Breccia

POSTED TEXT	L/R	TEXT	ITEMS
AU_PPM_Labels	R	-----	All
Rock_Code	L	-----	All

SECTION SPECS:

REF. PT. E, N	265049 m	8705847 m
EXTENTS	480.2 m	286.1 m
SECTION TOP, BOT	408.6 m	122.5 m
TOLERANCE +/-	20 m	



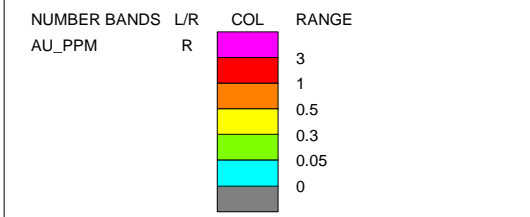
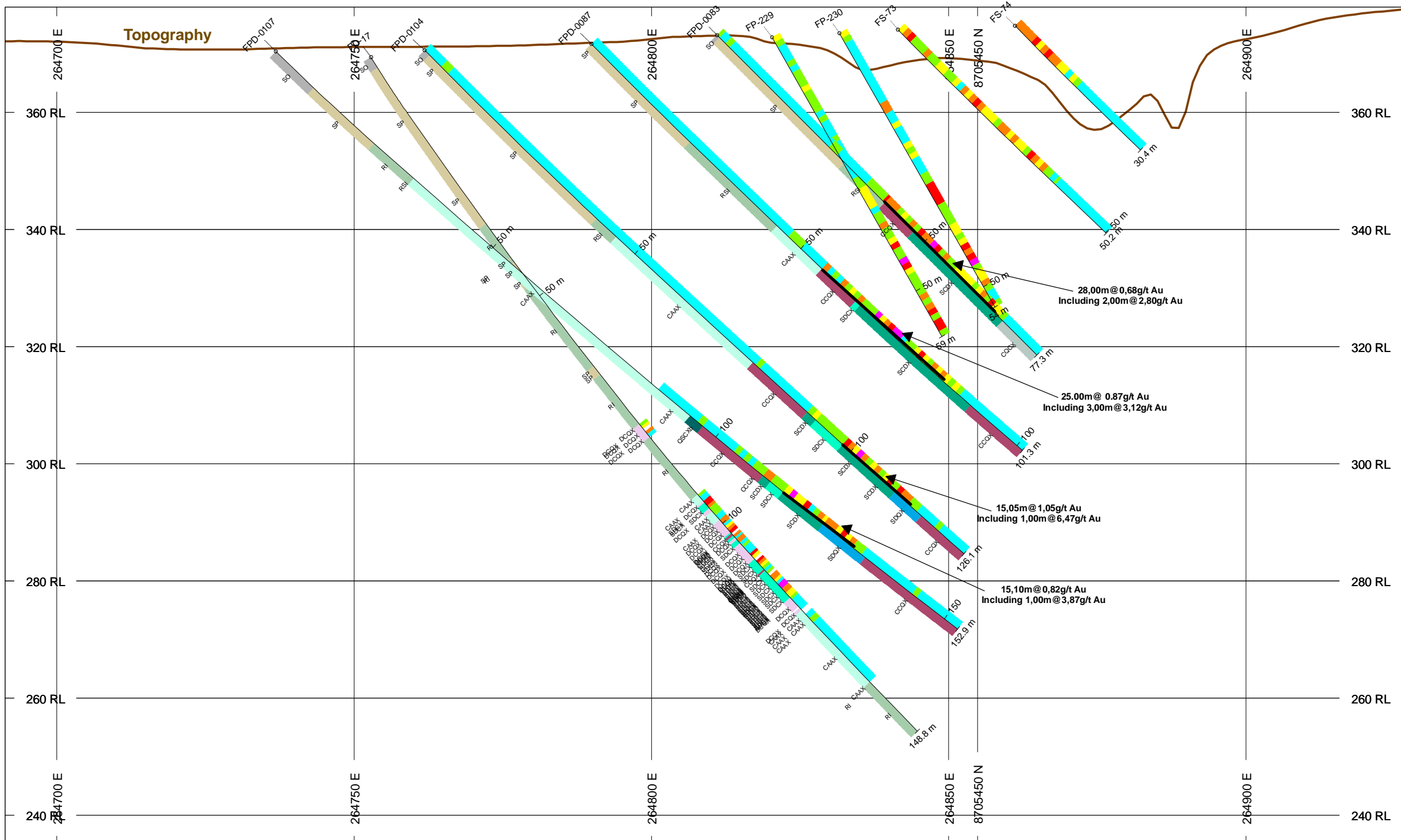


HOLES PLOTTED

TOTAL 9

FD-17	FP-229	FP-230	FPD-0083
FPD-0087	FPD-0104	FPD-0107	FS-73
FS-74			

**SECTION FPD-0107
PAIOL TARGET
ALMAS PROJECT**

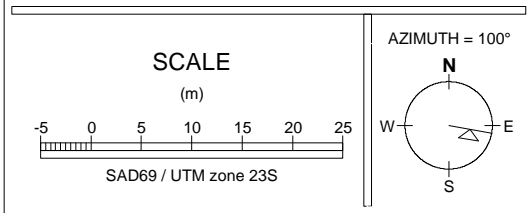


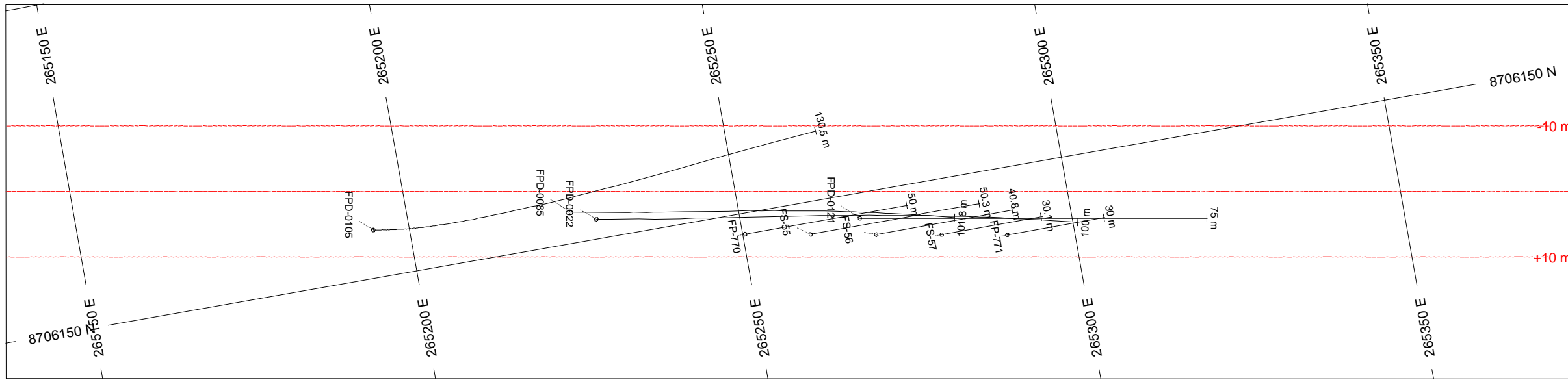
ROCK CODES	PAT	LABEL	DESCRIPTION
Rock_Code	SO	SO	Soil
	SP	SP	Saprolite
	RI	RI	Weathered Rock
	CAAX	CAAX	Chlorite-Albite-Amphibole Schists
	SDCX	SDCX	Sericite-ankerite-chlorite Schists
	SCDX	SCDX	Sericite-chlorite-Ankerite Schists
	SDQX	SDQX	Sericite-Ankerite-Quartz Schists
	CCQX	CCQX	Calcite-Chlorite-Quartz Schist
	CQCX	CQCX	Carbonate-Quartz-Chlorite Schist
	DCQX	DCQX	Dolomite-Chlorite-Quartz Schist
	RSI	RSI	Semi Weathered Rock
	QSCXb	QSCXb	

POSTED TEXT	L/R	TEXT	ITEMS
AU_PPM_Labels	R	-----	All
Rock_Code	L	-----	All

SECTION SPECS:

REF. PT. E, N	264810 m	8705458 m
EXTENTS	240.1 m	143 m
SECTION TOP, BOT	378 m	235 m
TOLERANCE +/-		10 m



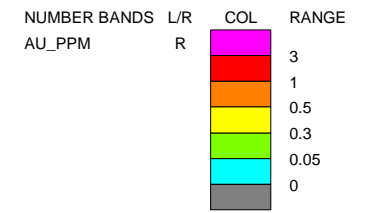


HOLES PLOTTED

TOTAL 9

FP-770 FP-771 FPD-0022 FPD-0085
 FPD-0105 FPD-0121 FS-55 FS-56
 FS-57

**SECTION FPD-0121
 PAIOL TARGET
 ALMAS PROJECT**

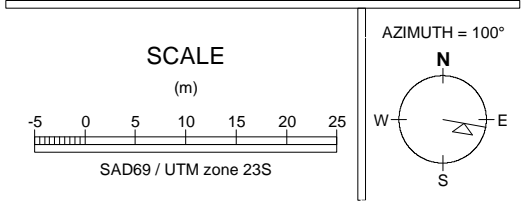
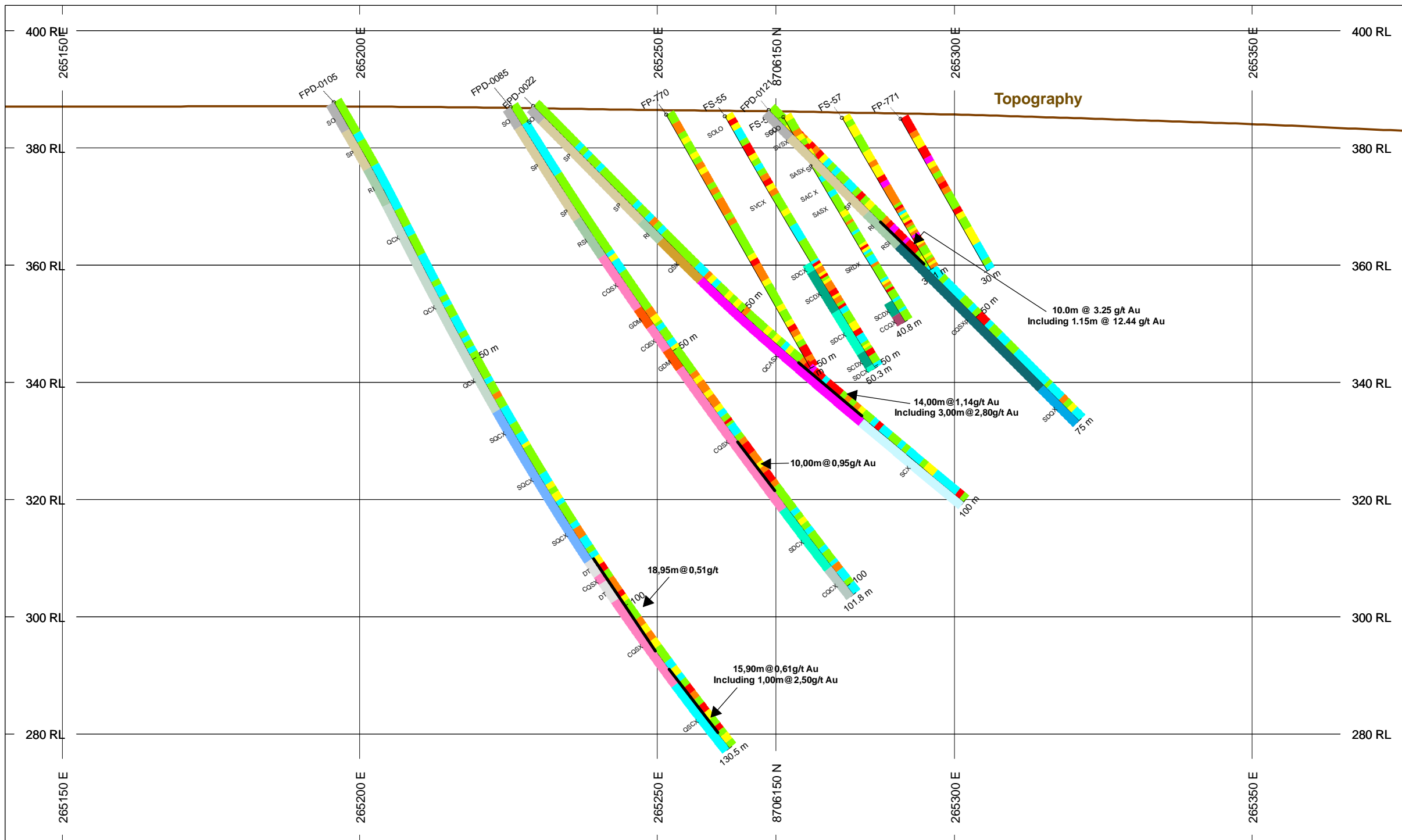


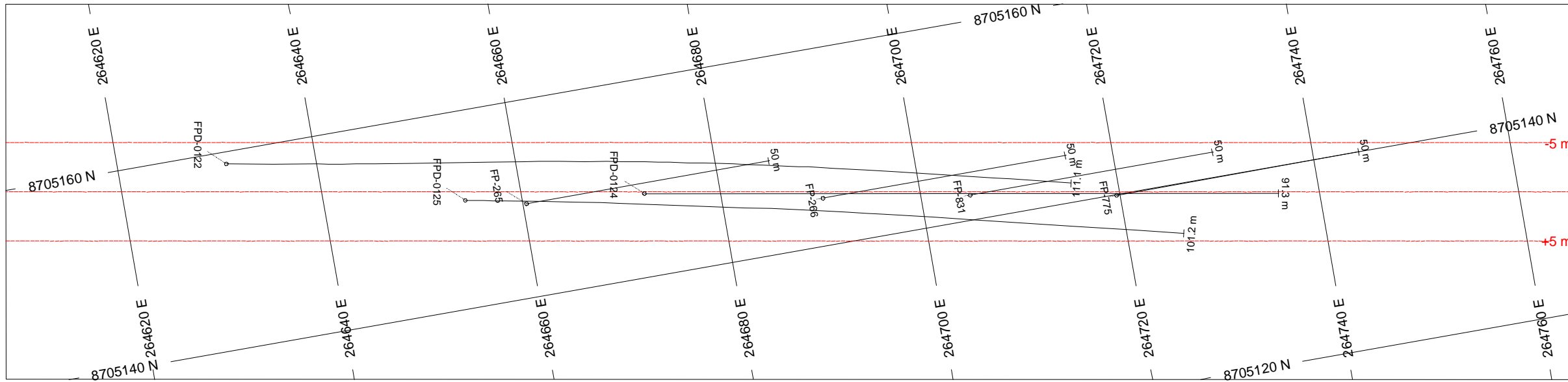
ROCK CODES	PAT	LABEL	DESCRIPTION
Rock_Code	SO	SO	Soil
	SP	SP	Saprolite
	RI	RI	Weathered Rock
	SDCX	SDCX	Sericite-ankerite-chlorite Schists
	SCDX	SCDX	Sericite-chlorite-Ankerite Schists
	SDQX	SDQX	Sericite-Ankerite-Quartz Schists
	CCQX	CCQX	Calcite-Chlorite-Quartz Schist
	SQCX	SQCX	Sericite-Quartz-Chlorite Schists
	CQCX	CQCX	Carbonate-Quartz-Chlorite Schist
	QSCX	QSCX	Quartz-Sericite-Chlorite Schist
	QSX	QSX	Quartz-Sericite Schist
	CQSX	CQSX	Chlorite-Quartz-Sericite Schist
	QCASX	QCASX	Quartz-Carbonate-Sericite Schist
	QCX	QCX	Quartz-Chlorite Schist
	SCX	SCX	Sericite-Chlorite Schist
	RSI	RSI	Semi Weathered Rock
	DT	DT	Tonalite Dike
	CQSXp	CQSXp	Chlorite-Quartz-Sericite Schist Proximal
	GDM	GDM	Milonite Granodiorite

POSTED TEXT	L/R	TEXT	ITEMS
AU_PPM_Labels	R	-----	All
Rock_Code	L	-----	All

SECTION SPECS:

REF. PT. E, N	265259 m	8706152 m
EXTENTS	240.1 m	143 m
SECTION TOP, BOT	404.3 m	261.3 m
TOLERANCE +/-	10 m	



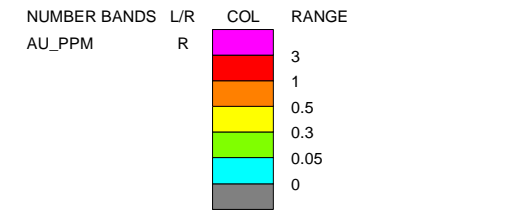
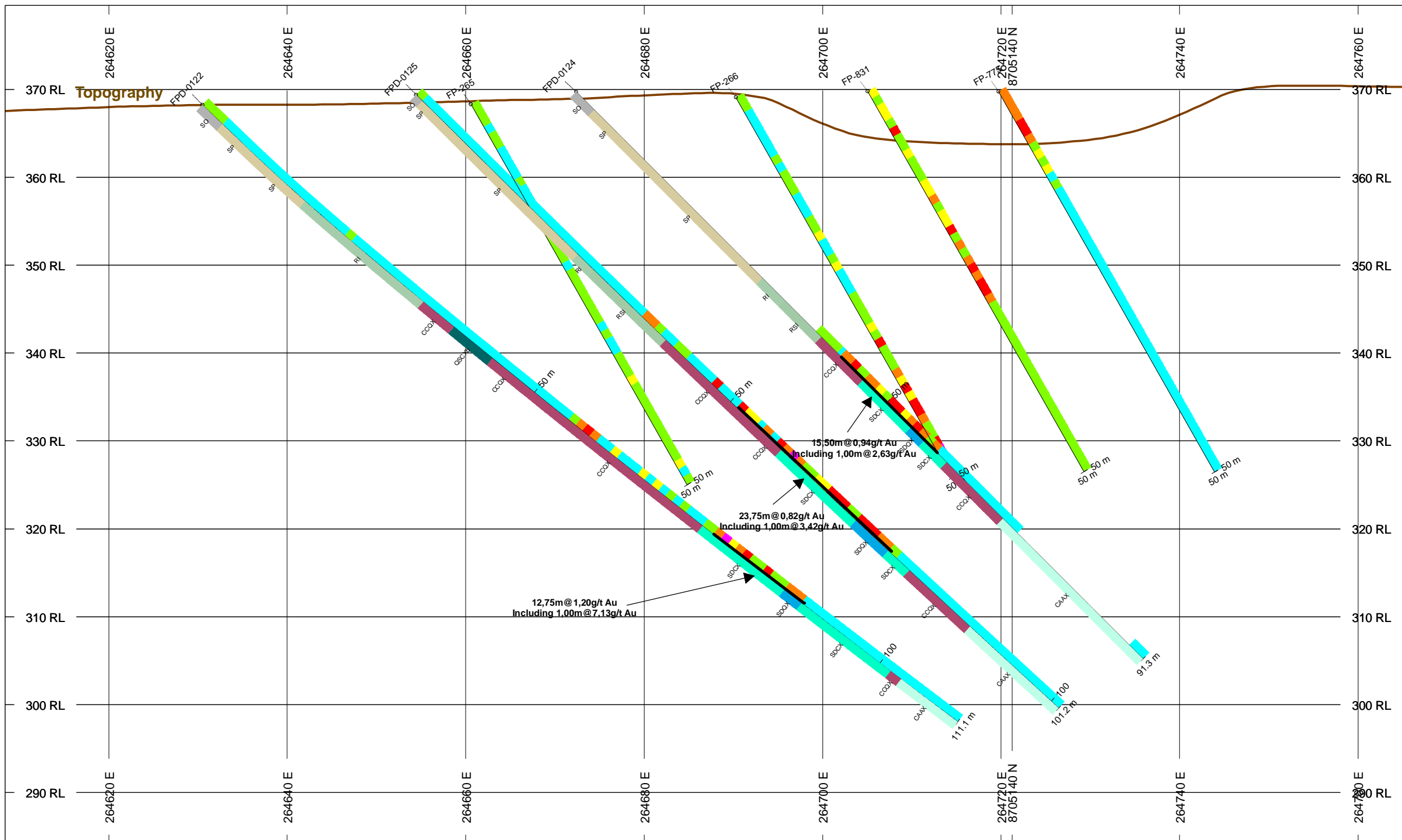


HOLES PLOTTED

TOTAL 7

FP-265 FP-266 FP-775 FP-831
 FPD-0122 FPD-0124 FPD-0125

**SECTION FPD-0122
 PAIOL TARGET
 ALMAS PROJECT**



ROCK CODES	PAT	LABEL	DESCRIPTION
Rock_Code	SO	SO	Soil
	SP	SP	Saprolite
	RI	RI	Weathered Rock
	CAAX	CAAX	Chlorite-Albite-Amphibole Schists
	SDCX	SDCX	Sericite-ankerite-chlorite Schists
	SDQX	SDQX	Sericite-Ankerite-Quartz Schists
	CCQX	CCQX	Calcite-Chlorite-Quartz Schist
	RSI	RSI	Semi Weathered Rock
	QSCXb	QSCXb	

POSTED TEXT	L/R	TEXT	ITEMS
AU_PPM_Labels	R	-----	All
Rock_Code	L	-----	All

SECTION SPECS:

REF. PT. E, N	264687 m	8705146 m
EXTENTS	160.1 m	95.36 m
SECTION TOP, BOT	379.5 m	284.2 m
TOLERANCE +/-	5 m	

