



El Gallo Complex Development Photo Update

June 22, 2012



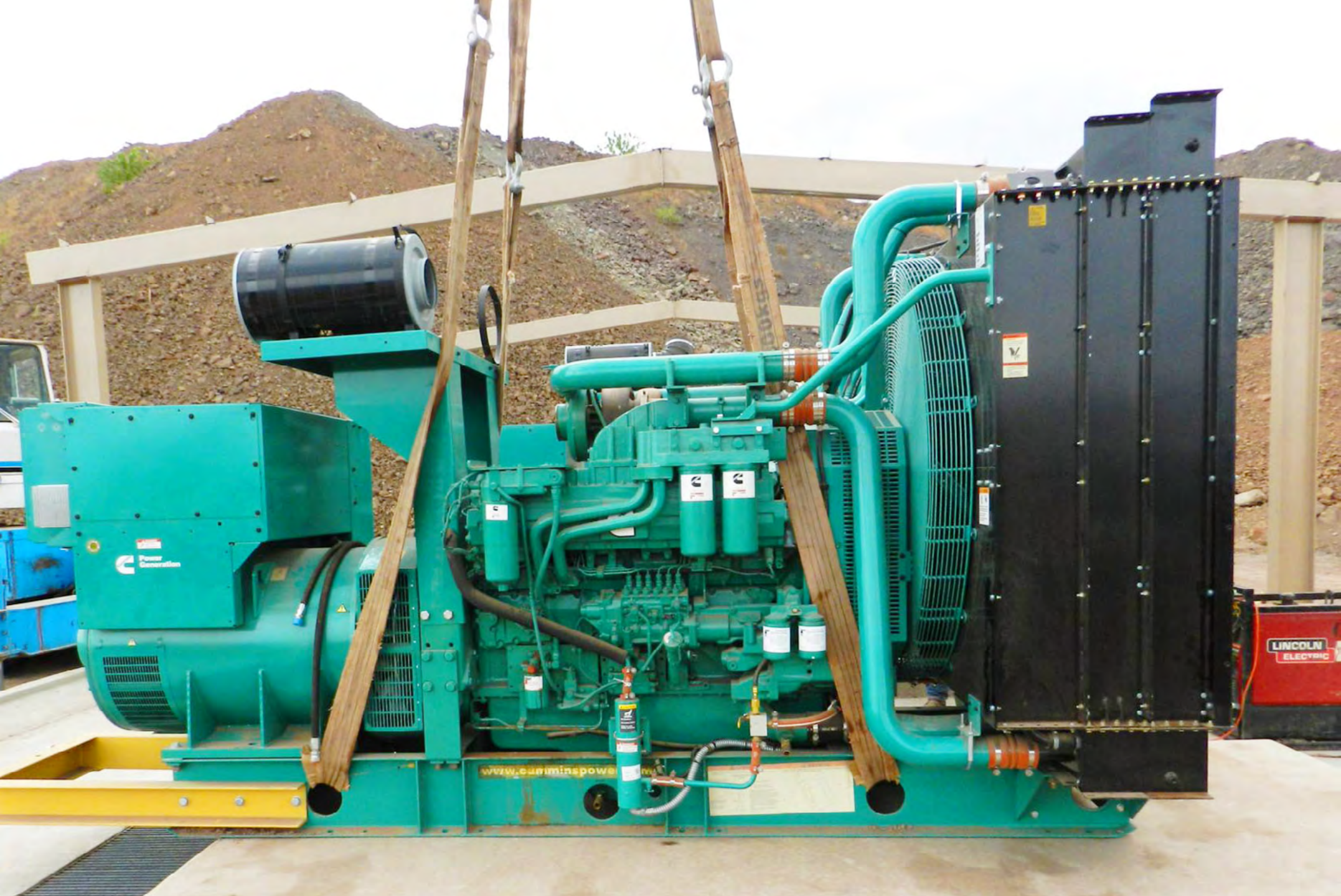
Heap leach construction 75% complete.



Process plant construction 90% complete.



Mining at Samaniego open pit continues.



Installing generators for the crushers.



Installing generators for the crushers.



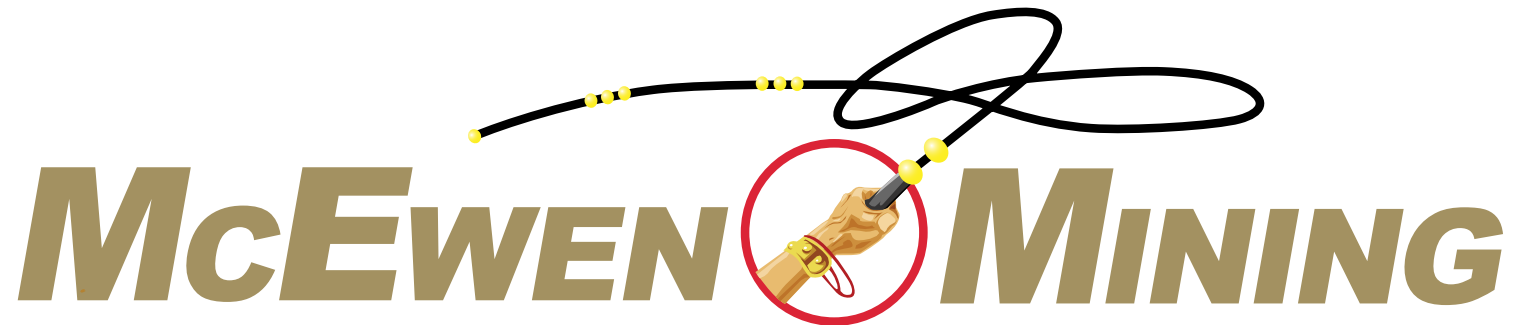
Final assembly of the crushers.



Final assembly of the crushers.



Final assembly of the crushers.



For further information please contact:

Jenya Meshcheryakova

Investor Relations

Tel: (647) 258-0395 x 410

Toll Free: (866) 441-0690

Fax: (647) 258-0408

Email: info@mcewenmining.com