



Photo 1: 8m wide mineralized zone at surface.



Photo 2: Massive sulphide sample adjacent to cross cutting fault.

797,000 mE

798,000 mE

Drill Hole Status

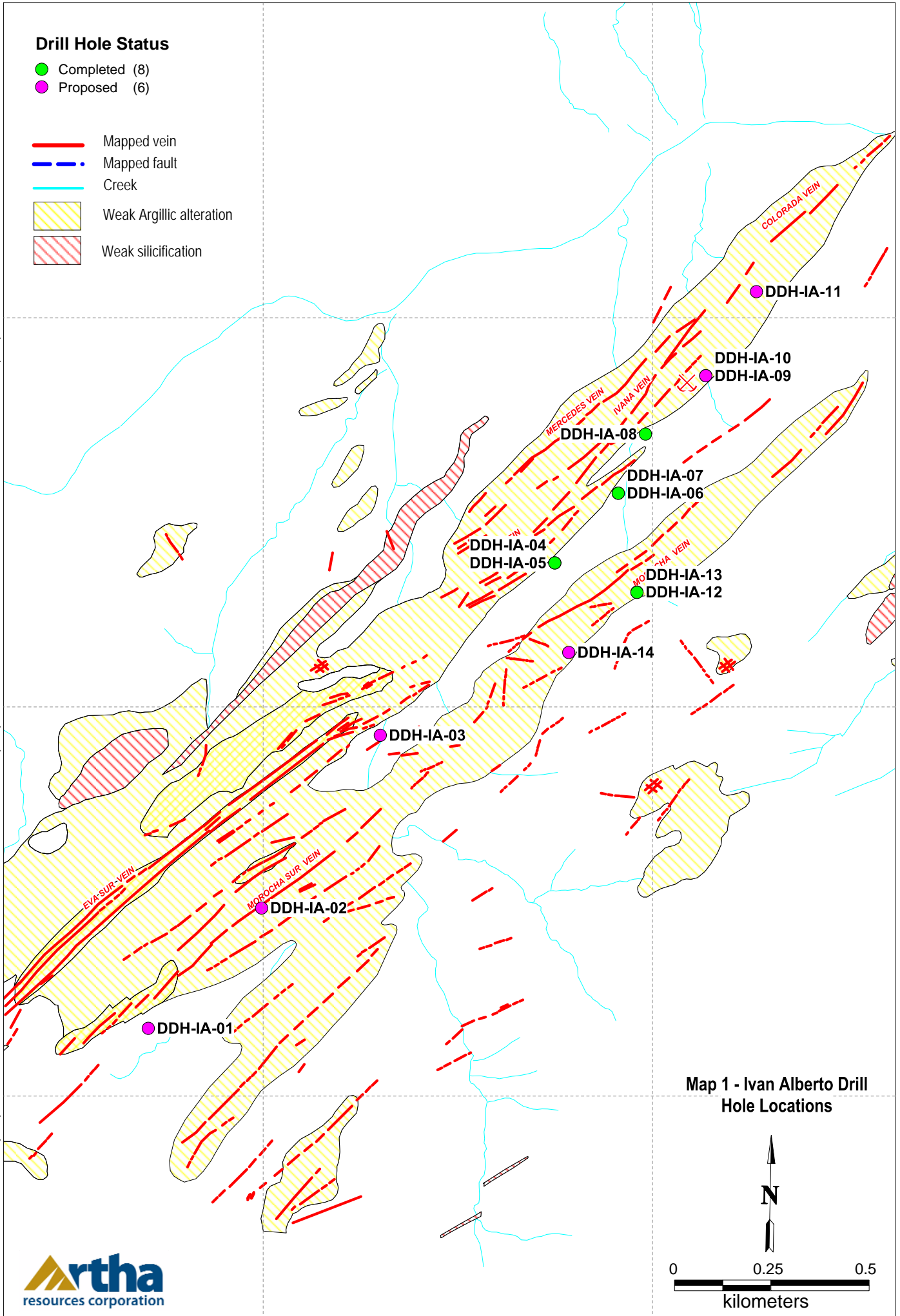
- Completed (8)
- Proposed (6)

- Mapped vein
- - - Mapped fault
- Creek
- Weak Argillic alteration
- Weak silicification

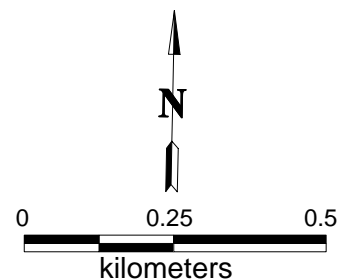
7,480,000 mN

7,479,000 mN

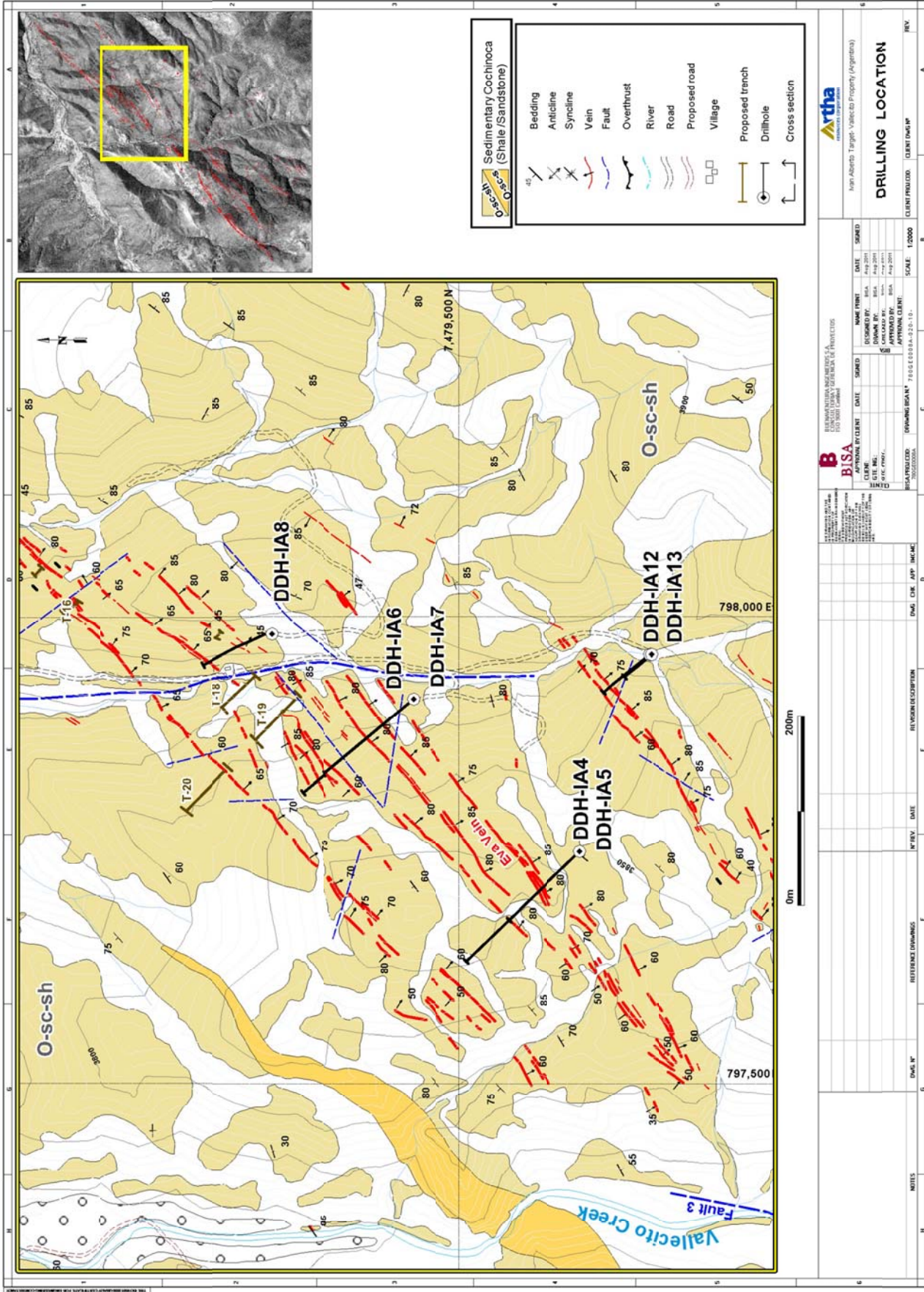
7,478,000 mN

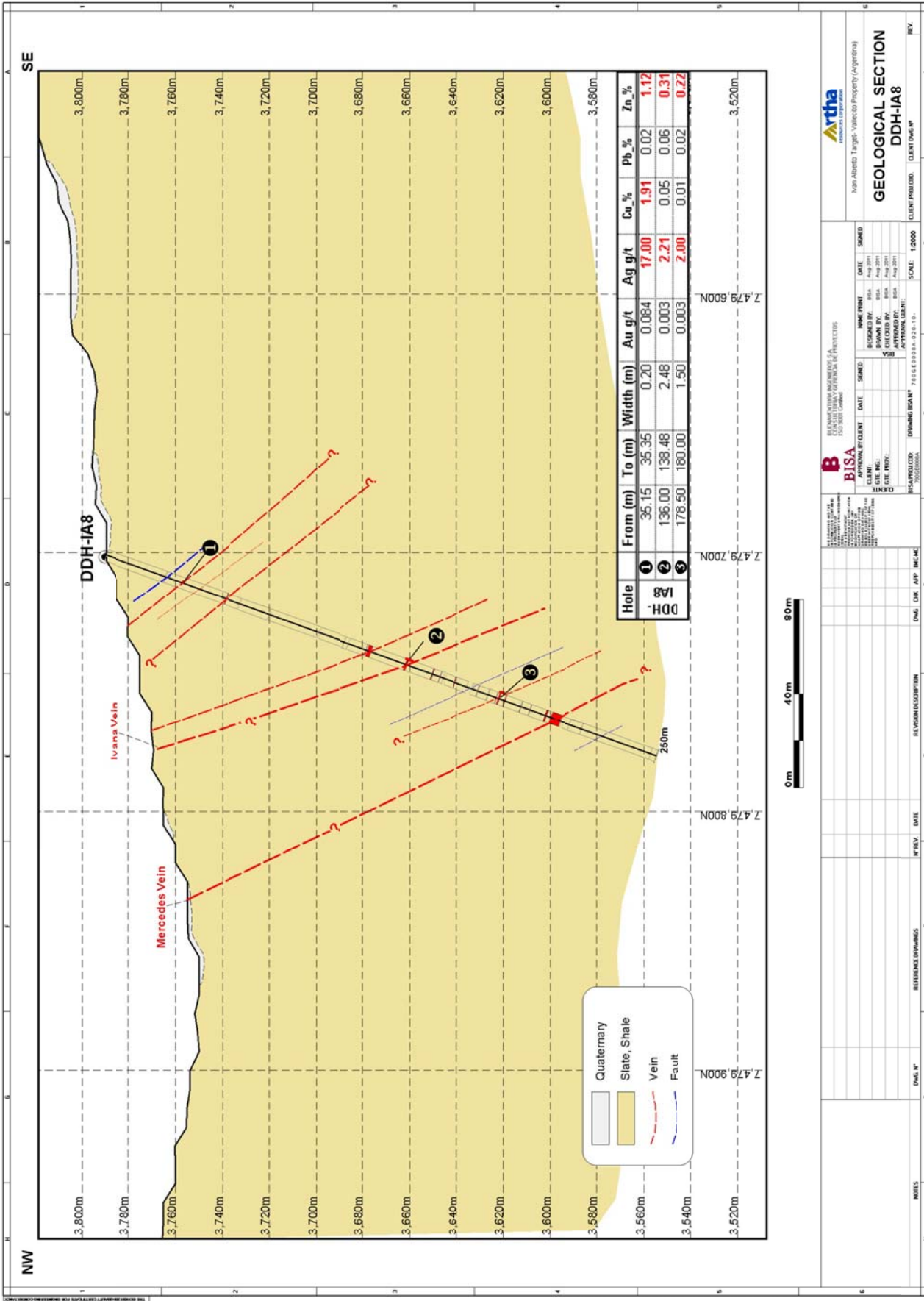


Map 1 - Ivan Alberto Drill Hole Locations



Map 2: Drill hole surface traces





BISA
BUREAU INGENIERIA S.A.
INGENIERIA DE PROYECTOS
CALLE 1000 LOMAS

Artha
resources corporation

APPROVED BY CLIENT	DATE	SIGNED	NAME PRINT	DATE	SIGNED
APPROVED BY:	Aug 2011		DESIGNED BY:	Aug 2011	
CHECKED BY:	BISA		CHECKED BY:	BISA	
DATE PRINT:			APPROVED BY:	Aug 2011	

PROYECTO: DDH-IA08
PROFESION: INGENIERIA

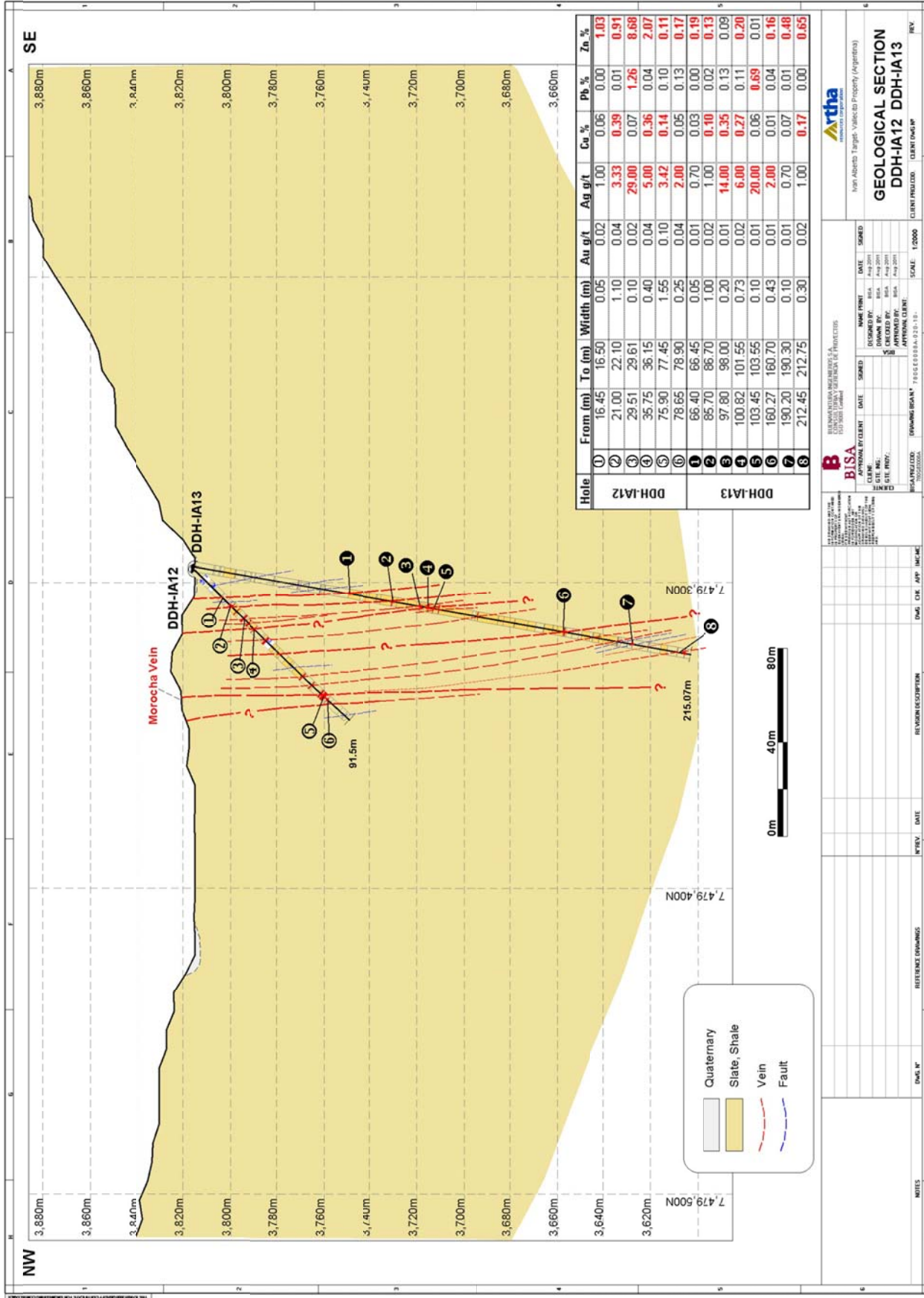
NO.	REVISION DESCRIPTION	DATE	BY	CHK	APP.	SCALE

CLIENT: Non Albero Target - Valcoco Property (Argentina)
GEOLOGICAL SECTION
DDH-IA8
CLIENT PROJECT: DDH-IA08
CLIENT OWNER: REV

DATE	BY	DATE	BY	DATE	BY

NOTES

Map 4: Cross section DDH-IA13 and DDH-IA12



Hole	From (m)	To (m)	Width (m)	Au g/t	Ag g/t	Cu %	Pb %	Zn %
DDH-IA12	1	16.45	16.50	0.02	1.00	0.06	0.00	1.03
	2	21.00	22.10	1.10	0.04	3.33	0.01	0.91
	3	29.51	29.61	0.10	0.02	29.00	0.07	1.26
	4	35.75	36.15	0.40	0.04	5.00	0.36	0.04
	5	75.90	77.45	1.55	0.10	3.42	0.14	0.10
	6	78.65	78.90	0.25	0.04	2.00	0.05	0.13
	7	66.40	66.45	0.05	0.01	0.70	0.03	0.00
	8	85.70	86.70	1.00	0.02	1.00	0.10	0.02
DDH-IA13	1	97.80	98.00	0.20	0.01	14.00	0.35	0.13
	2	100.82	101.55	0.73	0.02	6.00	0.27	0.11
	3	103.45	103.55	0.10	0.01	20.00	0.06	0.69
	4	160.27	160.70	0.43	0.01	2.00	0.01	0.04
	5	190.20	190.30	0.10	0.01	0.70	0.07	0.01
	6	212.45	212.75	0.30	0.02	1.00	0.17	0.00
	7	215.07m						
	8	215.07m						

BISA
BIOGEOCHEMICAL ANALYSIS
1101 001 Canada

CLIENT: **Artha Resources Corporation**
PROJECT: **DDH-IA12 DDH-IA13**
DRAWING NO: **PROG0000A-020-10**

DESIGNED BY: **BSA** DATE: **Aug 2011**
DRAWN BY: **BSA** DATE: **Aug 2011**
CHECKED BY: **BSA** DATE: **Aug 2011**
APPROVED BY: **BSA** DATE: **Aug 2011**

SCALE: 1:2000

Artha
resources corporation

Non-Alberta Target, Valeco Property (Argentina)

GEOLOGICAL SECTION
DDH-IA12 DDH-IA13

CLIENT PROJECT: CLIENT DRAWING: REV

DATE: INTREV: DATE: REVISION DESCRIPTION: DWG: CHK: APP: INCH: MCH

NOTES: REFERENCE DRAWINGS: