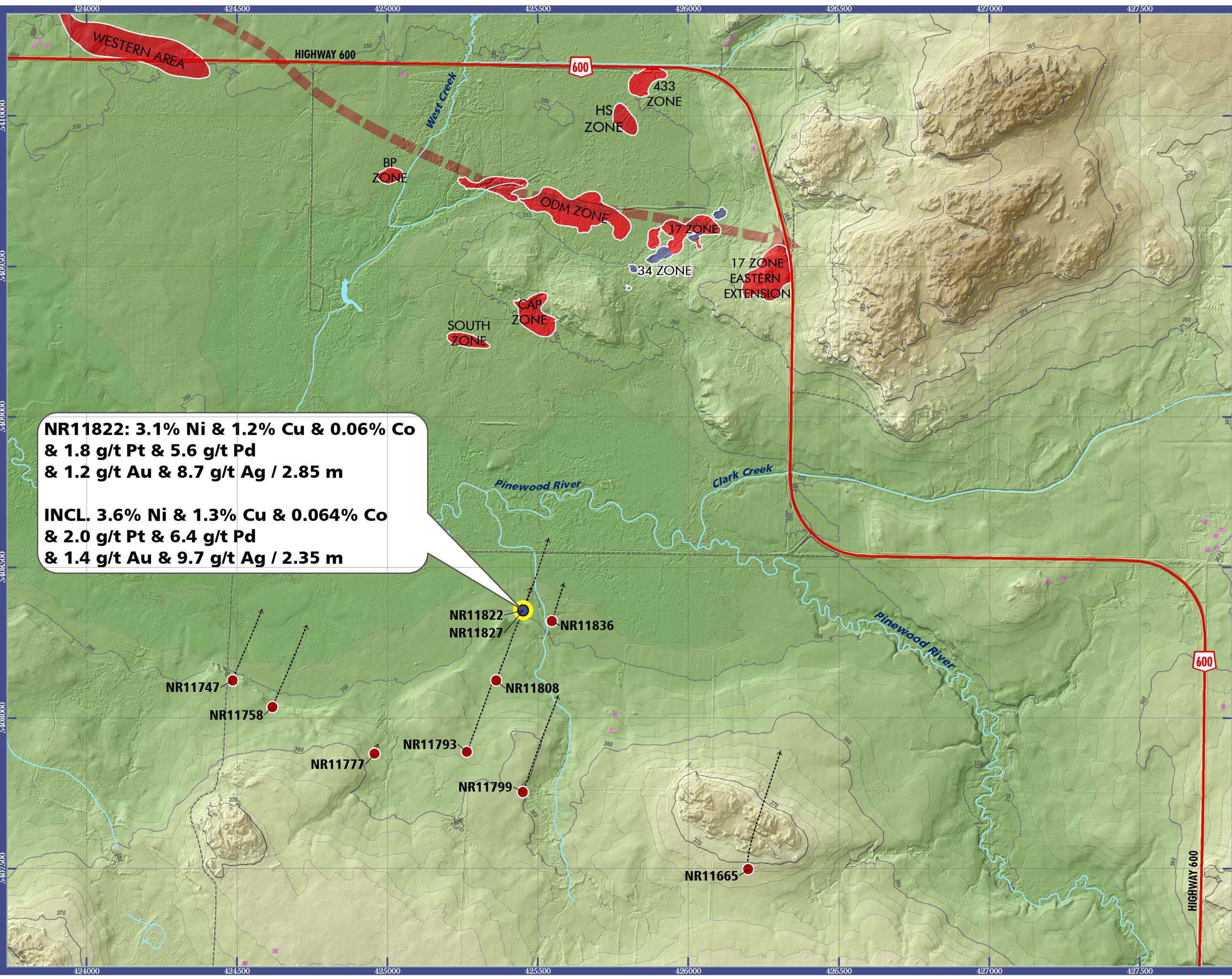


PINEWOOD SOUTH DISCOVERY

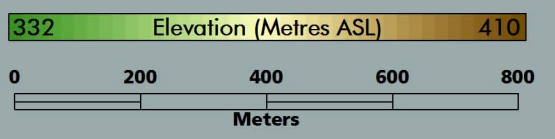
September 28, 2011



**NR11822: 3.1% Ni & 1.2% Cu & 0.06% Co
& 1.8 g/t Pt & 5.6 g/t Pd
& 1.2 g/t Au & 8.7 g/t Ag / 2.85 m**

**INCL. 3.6% Ni & 1.3% Cu & 0.064% Co
& 2.0 g/t Pt & 6.4 g/t Pd
& 1.4 g/t Au & 9.7 g/t Ag / 2.35 m**

- New Discovery
- Drillhole Collar Location
- Drillhole Tracer
- Zone (Au, Ag)
- Zone (Ni, Cu, Co, PGE)
- Magnetic Trend Line (Interpreted)
- Building Location
- Arterial Road
- Interpreted Road / Trail
- Waterbody
- Watercourse



Copyright © Rainy River Resources Ltd. 2011

