

7480500 N

7480000 N

7479500 N

7479000 N

7479500 N

7478000 N

7480500 N

7480000 N

7479500 N

7479000 N

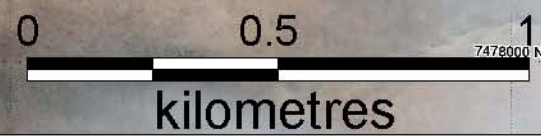
78500 N

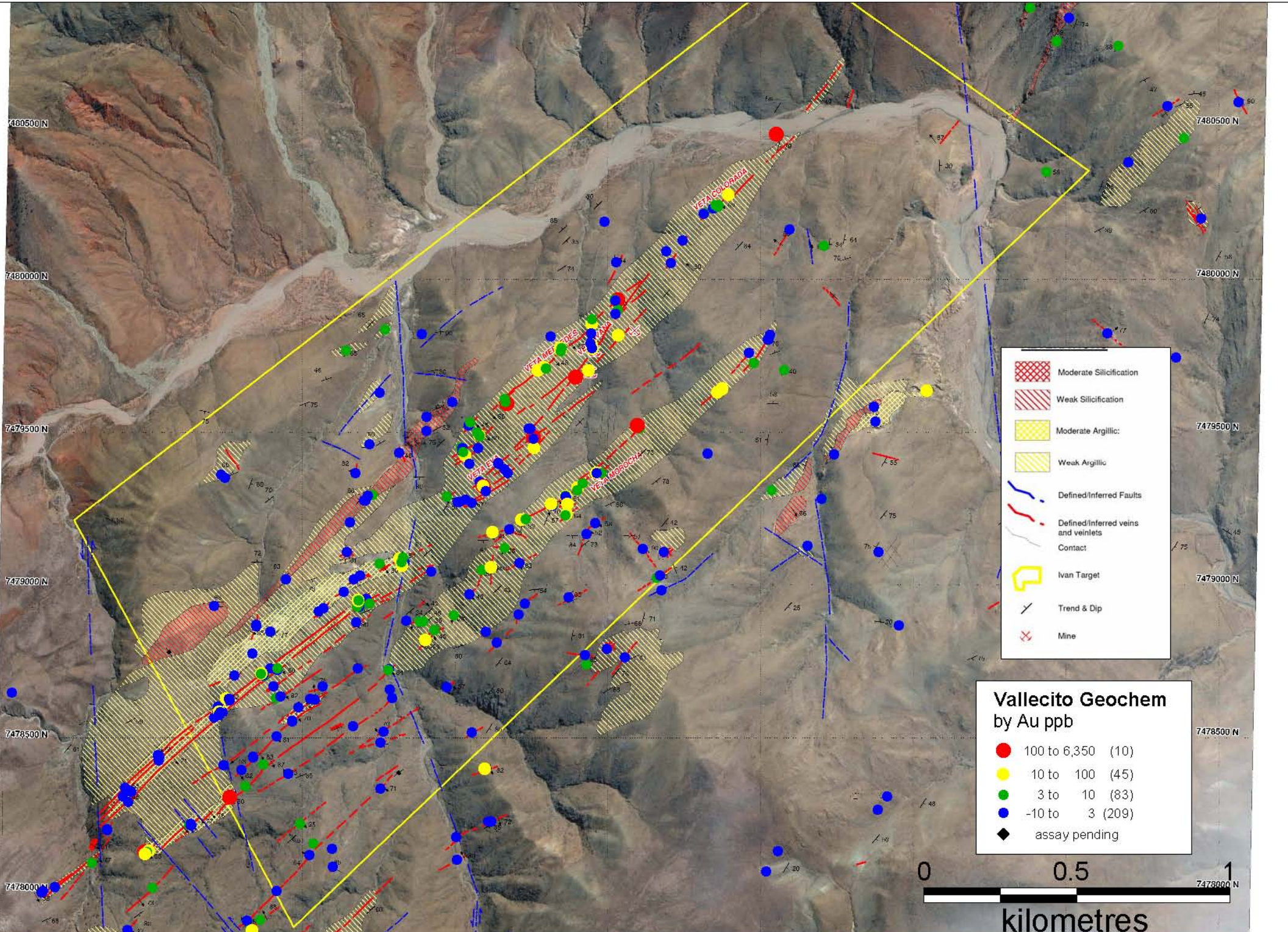
7478000 N

- Moderate Silicification
- Weak Silicification
- Moderate Argillic
- Weak Argillic
- Defined/Inferred Faults
- Defined/Inferred veins and veinlets
- Contact
- Ivan Target
- Trend & Dip
- Mine

**Vallecito Geochem**  
by Ag ppm

- 5 to 50 (4)
- 1 to 5 (22)
- 0.2 to 1 (38)
- 0 to 0.2 (282)
- assay pending

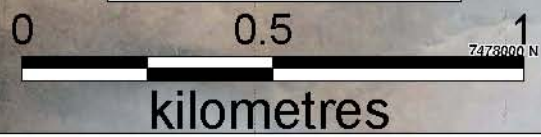


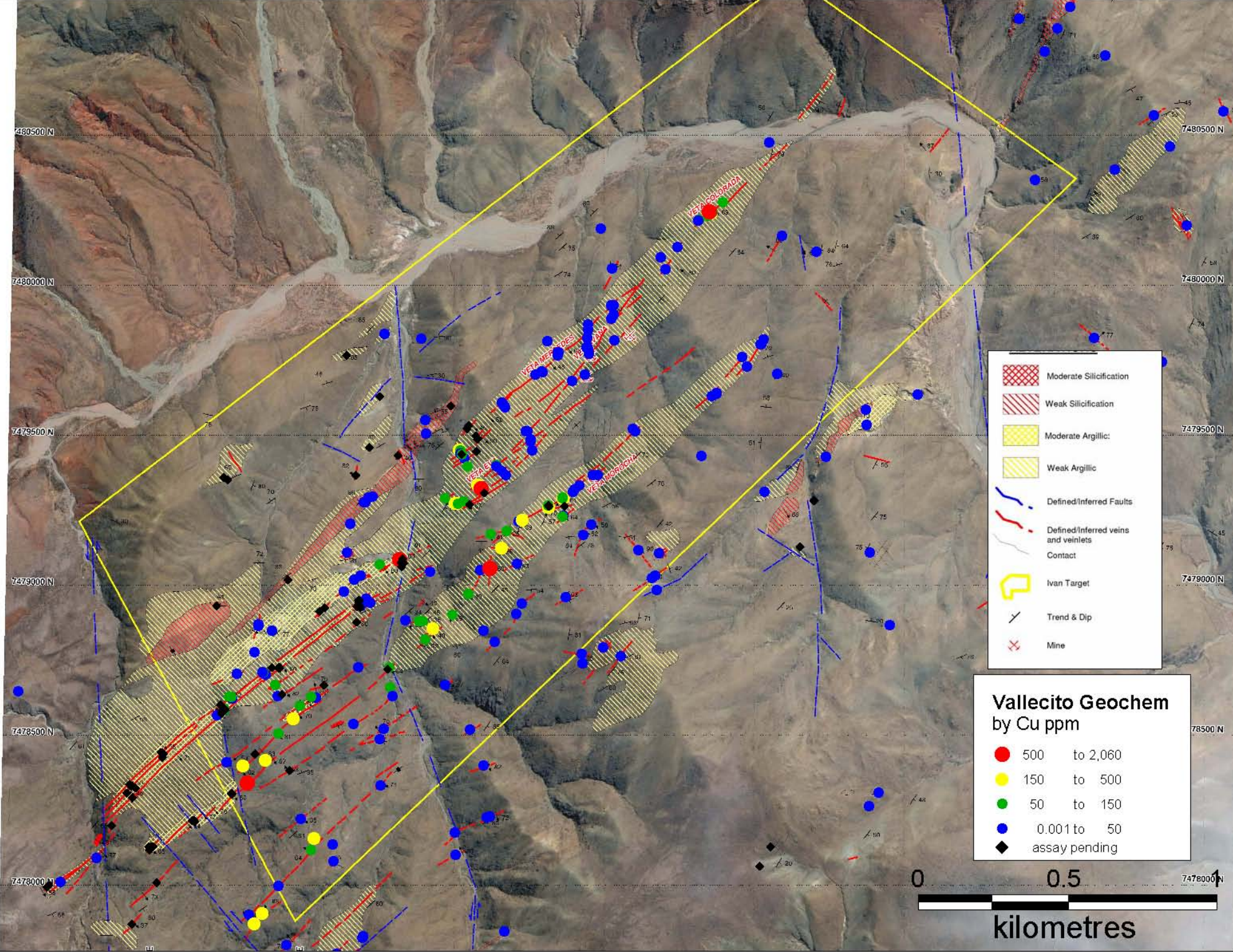


|  |                                     |
|--|-------------------------------------|
|  | Moderate Silicification             |
|  | Weak Silicification                 |
|  | Moderate Argillic:                  |
|  | Weak Argillic                       |
|  | Defined/Inferred Faults             |
|  | Defined/Inferred veins and veinlets |
|  | Contact                             |
|  | Ivan Target                         |
|  | Trend & Dip                         |
|  | Mine                                |

**Vallecito Geochem  
by Au ppb**

|  |                   |
|--|-------------------|
|  | 100 to 6,350 (10) |
|  | 10 to 100 (45)    |
|  | 3 to 10 (83)      |
|  | -10 to 3 (209)    |
|  | assay pending     |

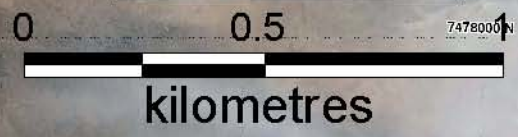




- Moderate Silicification
- Weak Silicification
- Moderate Argillic
- Weak Argillic
- Defined/Inferred Faults
- Defined/Inferred veins and veinlets
- Contact
- Ivan Target
- Trend & Dip
- Mine

**Vallecito Geochem**  
by Cu ppm

- 500 to 2,060
- 150 to 500
- 50 to 150
- 0.001 to 50
- assay pending



7480500 N

7480000 N

7479500 N

7479000 N

7478500 N

7478000 N

7480500 N

7480000 N

7479500 N

7479000 N

7478500 N

7478000 N

