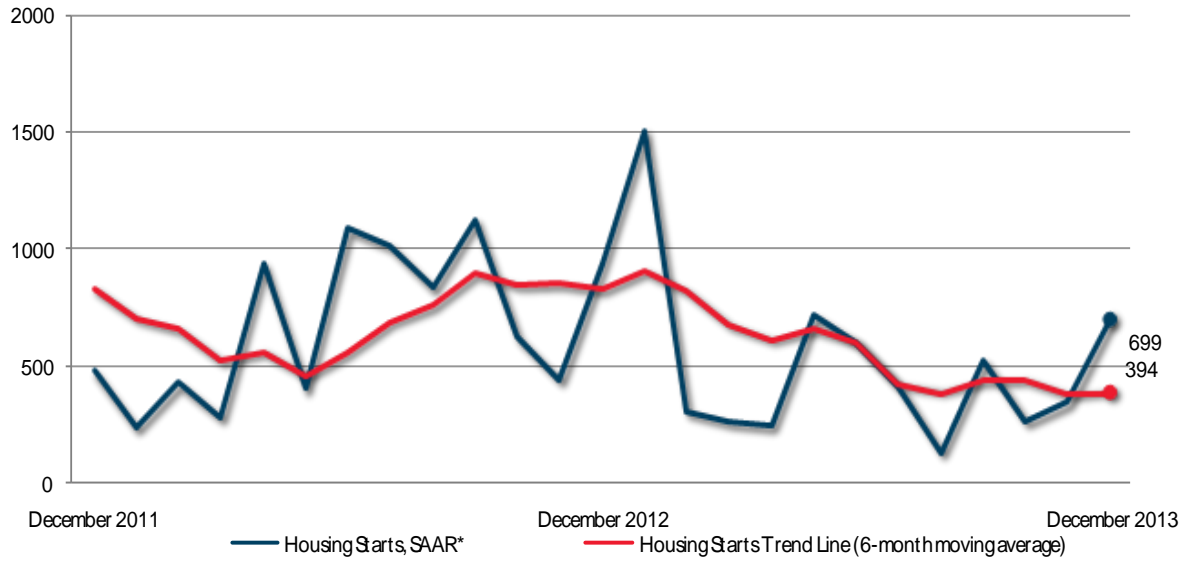


Prince Edward Island Housing Starts - Urban Areas



Preliminary Housing Start Data December 2013		
Prince Edward Island, Centres 10,000+	November 2013	December 2013
<i>Trend</i> ¹ , urban centres ²	378	394
SAAR, urban centres ²	342	699
	December 2012	December 2013
Actual, urban centres ²		
December - Single-Detached	25	11
December - Multiples	50	46
December - Total	75	57
January to December - Single-Detached	249	177
January to December - Multiples	430	325
January to December - Total	679	502

Source: CMHC

¹The trend is a six-month moving average of the monthly seasonally adjusted annual rates (SAAR).

²Urban centres with a population of 10,000 and over.

Detailed data available upon request

Prince Edward Island Preliminary Actual Housing Start Data Fourth Quarter / 2012-2013							
Urban Centres	Single-Detached		Multiples		Total		
	2012	2013	2012	2013	2012	2013	
Charlottetown CA	23	11	50	46	73	57	
Summerside CA	2	0	0	0	2	0	
Total Urban Centres¹	25	11	50	46	75	57	

Prince Edward Island Preliminary Actual Housing Start Data January to December / 2012-2013							
Urban Centres	Single-Detached		Multiples		Total		
	2012	2013	2012	2013	2012	2013	
Charlottetown CA	224	160	388	278	612	438	
Summerside CA	25	17	42	47	67	64	
Total Urban Centres¹	249	177	430	325	679	502	

¹Urban centres with a population of 10,000 and over.

Canada 

