



Centerra Gold Inc.- Kara-Beldyr Drilling Results

Period June 1st 2009 to September 30th, 2010

Page 1 of 2

Drill Hole	Location	Drill Section	From (m)	To (m)	Core Length (m)	Au (g/t)
KB-019	Gord	13	173.8	174.6	0.8	1.80
KB-011	Gord	14	61.4	62.3	0.9	2.10
			83.3	86.0	2.7	0.88
			136.0	138.0	2.0	1.18
			145.0	151.0	6.0	1.27
KB-002	Gord	15	65.0	69.0	4.0	2.06
			94.0	101.9	7.9	1.56
			<i>includes</i> 101.0	101.9	0.9	5.24
			128.0	131.0	3.0	3.78
KB-012	Gord	15	24.0	30.0	6.0	0.50
			37.0	40.0	3.0	0.54
			47.0	55.0	8.0	1.00
			64.0	64.8	0.8	1.11
			76.0	78.0	2.0	1.50
			82.0	89.3	7.3	2.52
KB-006	Gord	16	8.0	18.0	10.0	2.27
			<i>includes</i> 10.0	11.0	1.0	12.32
			24.0	32.2	8.2	2.63
			<i>includes</i> 30.0	31.2	1.2	6.60
			51.0	68.0	17.0	0.75
KB-010	Gord	16	82.0	96.0	14.0	1.48
			104.0	112.0	8.0	1.90
			<i>includes</i> 108.0	109.0	1.0	7.72
			125.0	131.1	6.1	0.60
			137.9	143.0	5.1	2.33
			<i>includes</i> 141.8	143.0	1.2	7.10
KB-008	Gord	17	149.0	150.0	1.0	1.03
			37.0	39.0	2.0	2.09
			43.0	54.0	11.0	1.35
			<i>includes</i> 43.0	44.0	1.0	8.72
			77.0	78.0	1.0	5.15
			95.0	102.0	7.0	1.46
			144.0	145.0	1.0	4.87
155.0	156.0	1.0	4.04			
KB-018	Gord	17	57.2	64.2	7.0	1.35
			97.8	99.8	2.0	1.42
			102.8	104.8	2.0	4.92
			<i>includes</i> 103.8	104.8	1.0	6.29
			129.0	132.0	3.0	1.10

Notes: All assays reported are actual values with no top cutting factor applied
Significant mineralized intervals are greater than 0.5 g/t
True widths for mineralized zones are about 70% to 90% of stated down hole interval
This information should be read together with our news release of November 15th, 2010. Ian Atkinson, a Certified Professional Geologist, is Centerra's qualified person for the purpose of National Instrument 43-101
Tables are current as of September 30th, 2010.



Centerra Gold Inc.- Kara-Beldyr Drilling Results

Period June 1st 2009 to September 30th, 2010

Page 2 of 2

Drill Hole	Location	Drill Section	From (m)	To (m)	Core Length (m)	Au (g/t)	
KB-001	Gord	18	34.0	45.0	11.0	1.18	
			60.0	64.0	4.0	6.38	
			<i>includes</i>	63.0	64.0	1.0	23.89
			68.0	83.0	15.0	1.53	
			<i>includes</i>	81.0	82.0	1.0	10.30
			107.0	115.0	8.0	3.09	
			<i>includes</i>	111.0	112.0	1.0	18.32
			120.0	142.0	22.0	10.28	
			<i>includes</i>	123.0	125.0	2.0	32.60
	<i>includes</i>	132.0	134.0	2.0	29.66		
	<i>includes</i>	136.0	137.0	1.0	61.90		
			198.0	200.0	2.0	0.89	
KB-017	Gord	18	15.8	18.0	2.2	4.54	
			42.0	59.0	17.0	1.49	
			<i>includes</i>	47.0	48.0	1.0	12.09
			76.0	88.1	12.1	4.22	
	<i>includes</i>	79.8	83.0	3.2	11.04		
KB-003	Gord	19	6.0	21.2	15.2	2.40	
			31.5	43.5	12.0	1.53	
			<i>includes</i>	36.5	37.5	1.0	7.06
KB-004	Gord	19	22.6	30.1	7.5	0.59	
			48.0	51.0	3.0	1.02	
			76.4	79.3	2.9	0.61	
KB-007	Gord	19	76.0	81.0	5.0	0.57	
			89.0	92.0	3.0	1.82	
			99.0	117.0	18.0	4.37	
			<i>includes</i>	106.0	108.0	2.0	25.50
			<i>includes</i>	116.0	117.0	1.0	16.16
			131.0	132.0	1.0	6.94	
KB-009	Gord	19	68.0	69.3	1.3	1.30	
			133.0	134.0	1.0	1.08	
			172.0	178.0	6.0	7.26	
			<i>includes</i>	173.0	174.0	1.0	41.14
			183.0	184.0	1.0	1.82	
			200.0	213.0	13.0	4.81	
	<i>includes</i>	205.0	209.0	4.0	12.80		
KB-015	Gord	20	73.0	74.0	1.0	2.61	
			81.0	85.8	4.8	1.10	
			99.0	102.0	3.0	0.70	
KB-016	Gord	21	72.0	81.0	9.0	1.10	
			159.0	160.1	1.1	3.67	
			195.2	199.8	4.6	0.98	

Notes: All assays reported are actual values with no top cutting factor applied

Significant mineralized intervals are greater than 0.50 g/t Au

True widths for mineralized zones are about 70% to 90% of stated down hole interval

This information should be read together with our news release of November 15th, 2010. Ian Atkinson, a Certified Professional Geologist, is Centerra's qualified person for the purpose of National Instrument 43-101

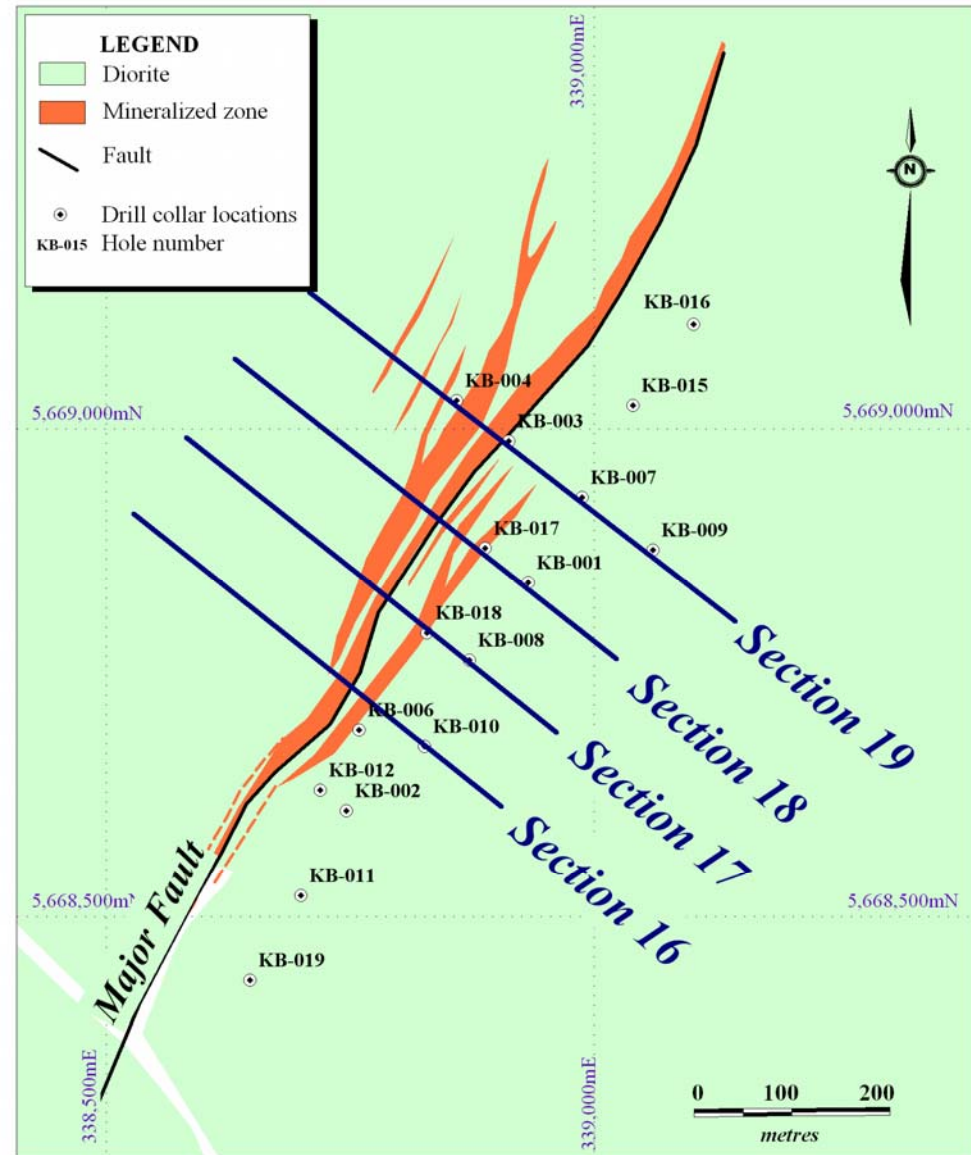
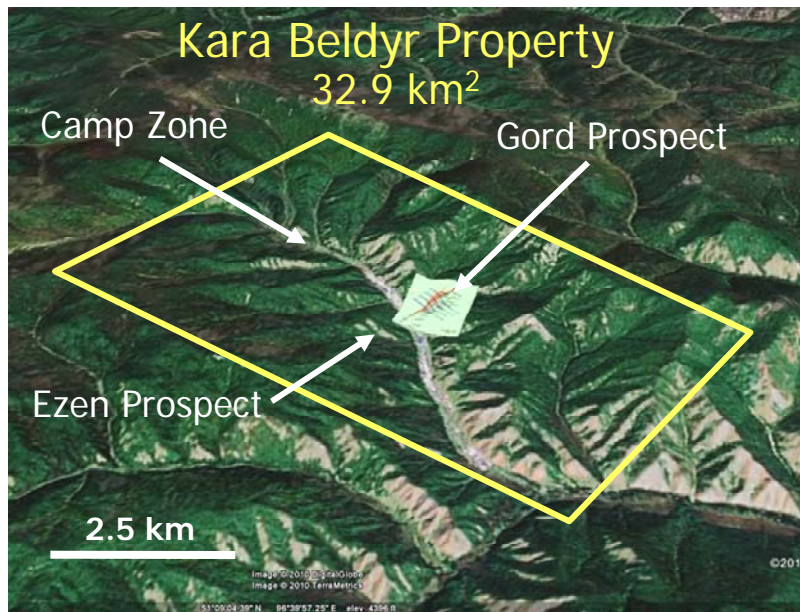
Tables are current as of September 30th, 2010.

Kara Beldyr - Q3 2010 – Gord Prospect, Drillhole Plan Map



RUSSIA

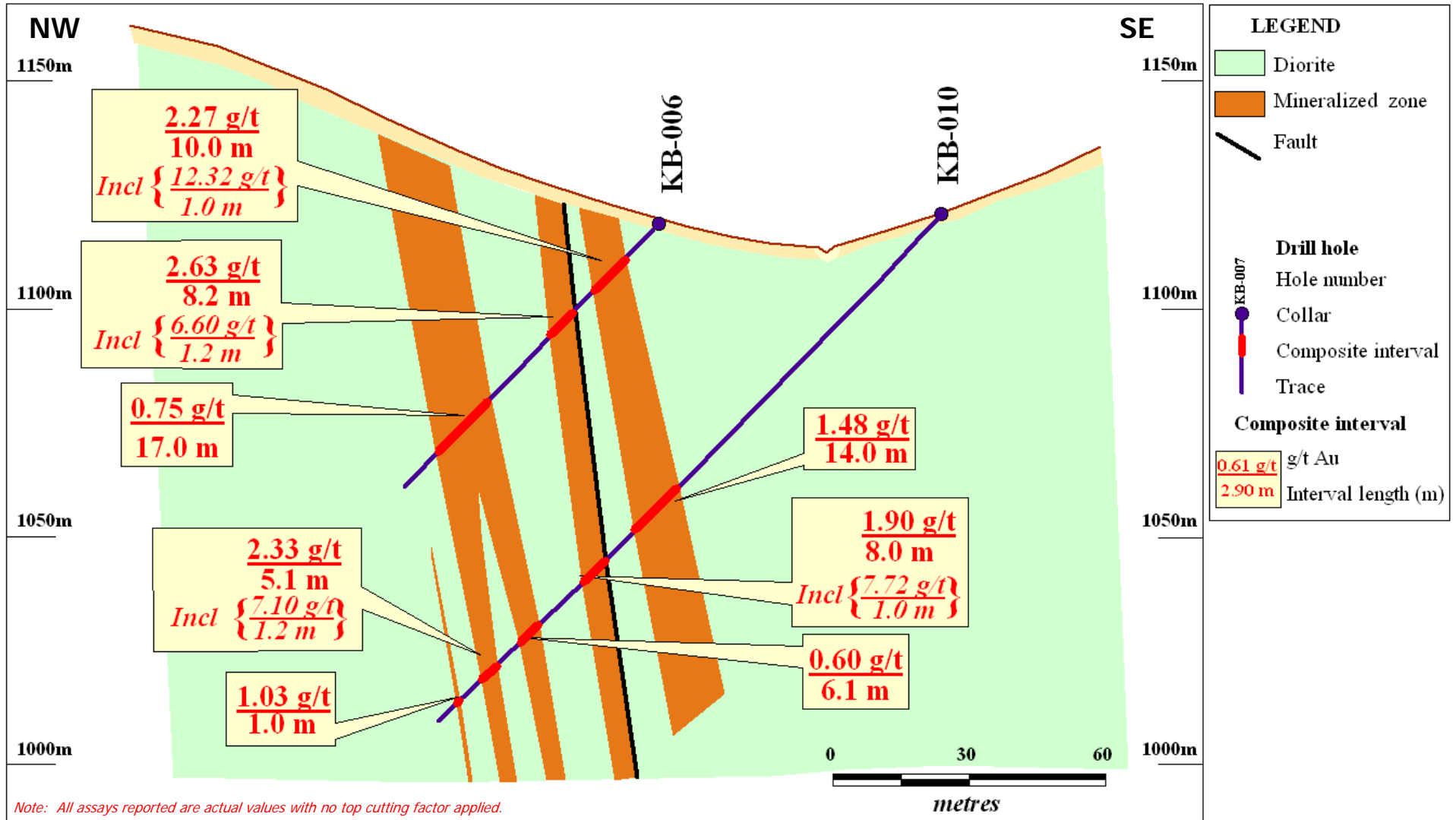
Tyva
Republic



This information should be read together with our news release of November 15th, 2010.
Ian Atkinson, a Certified Professional Geologist, is Centerra's qualified person for the purpose of National Instrument 43-101.

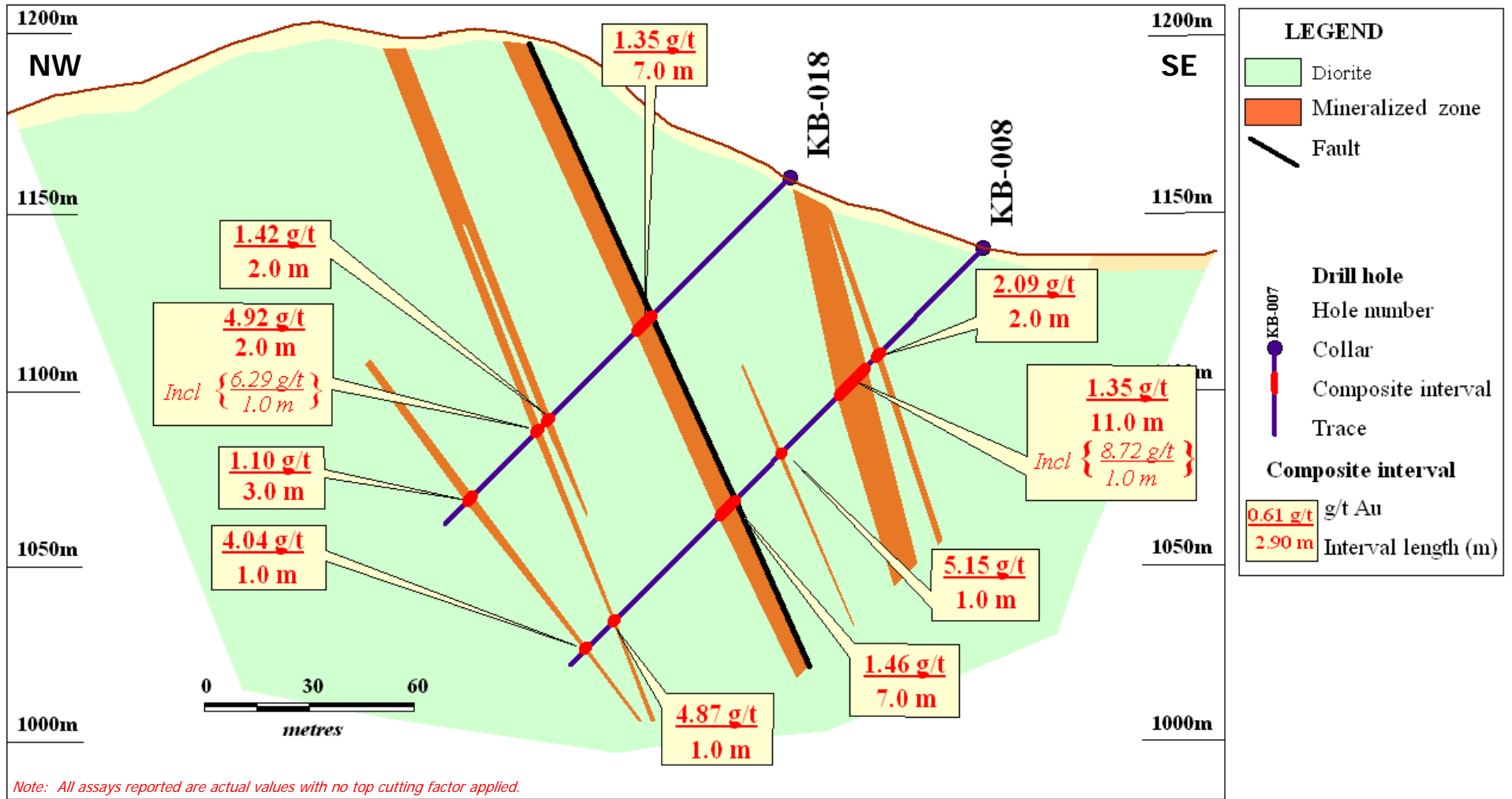
Kara Beldyr - Q3 2010

Gord Section 16



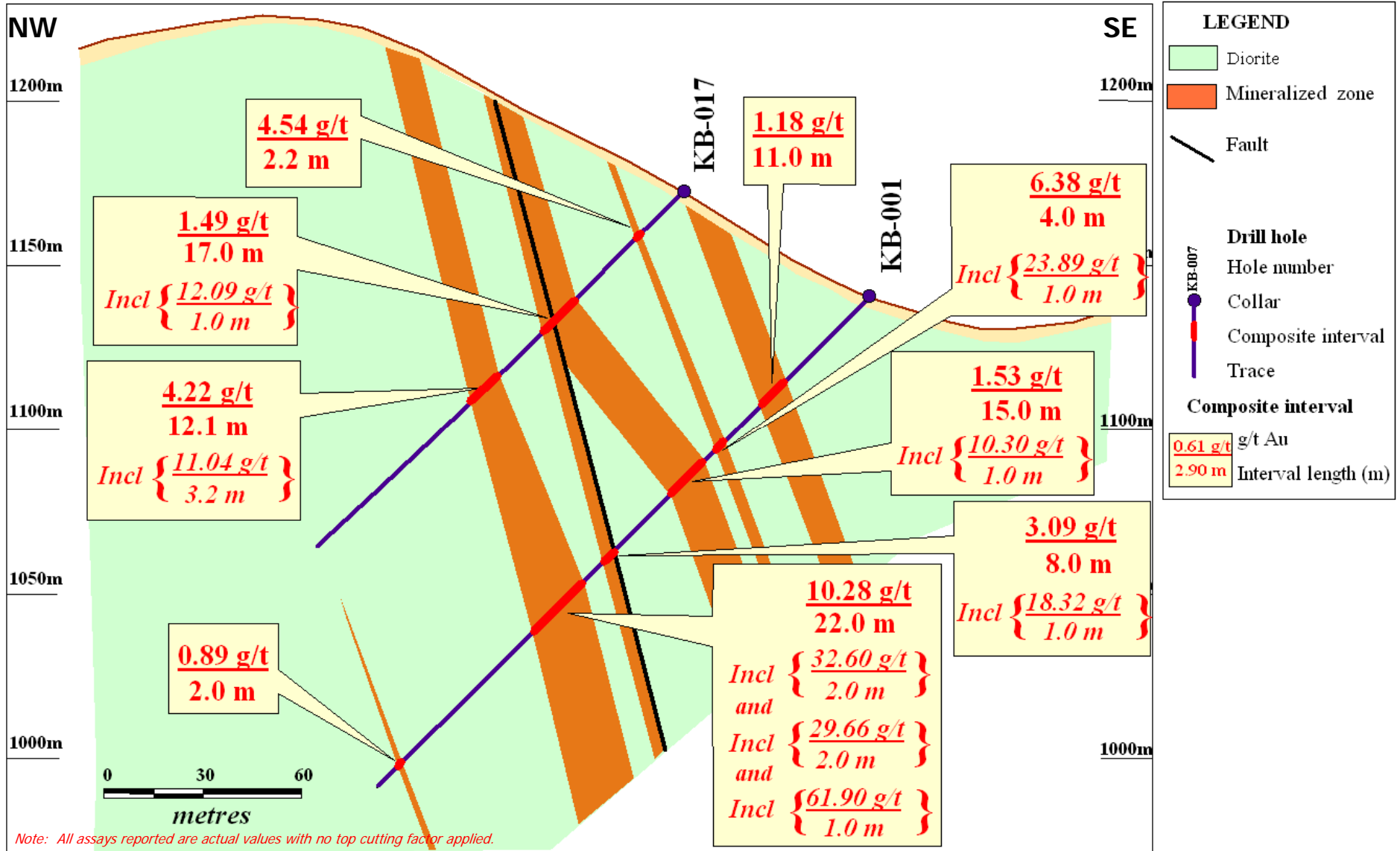
This information should be read together with our news release of November 15th, 2010. Ian Atkinson, a Certified Professional Geologist, is Centerra's qualified person for the purpose of National Instrument 43-101.

Kara Beldyr - Q3 2010 Gord Section 17



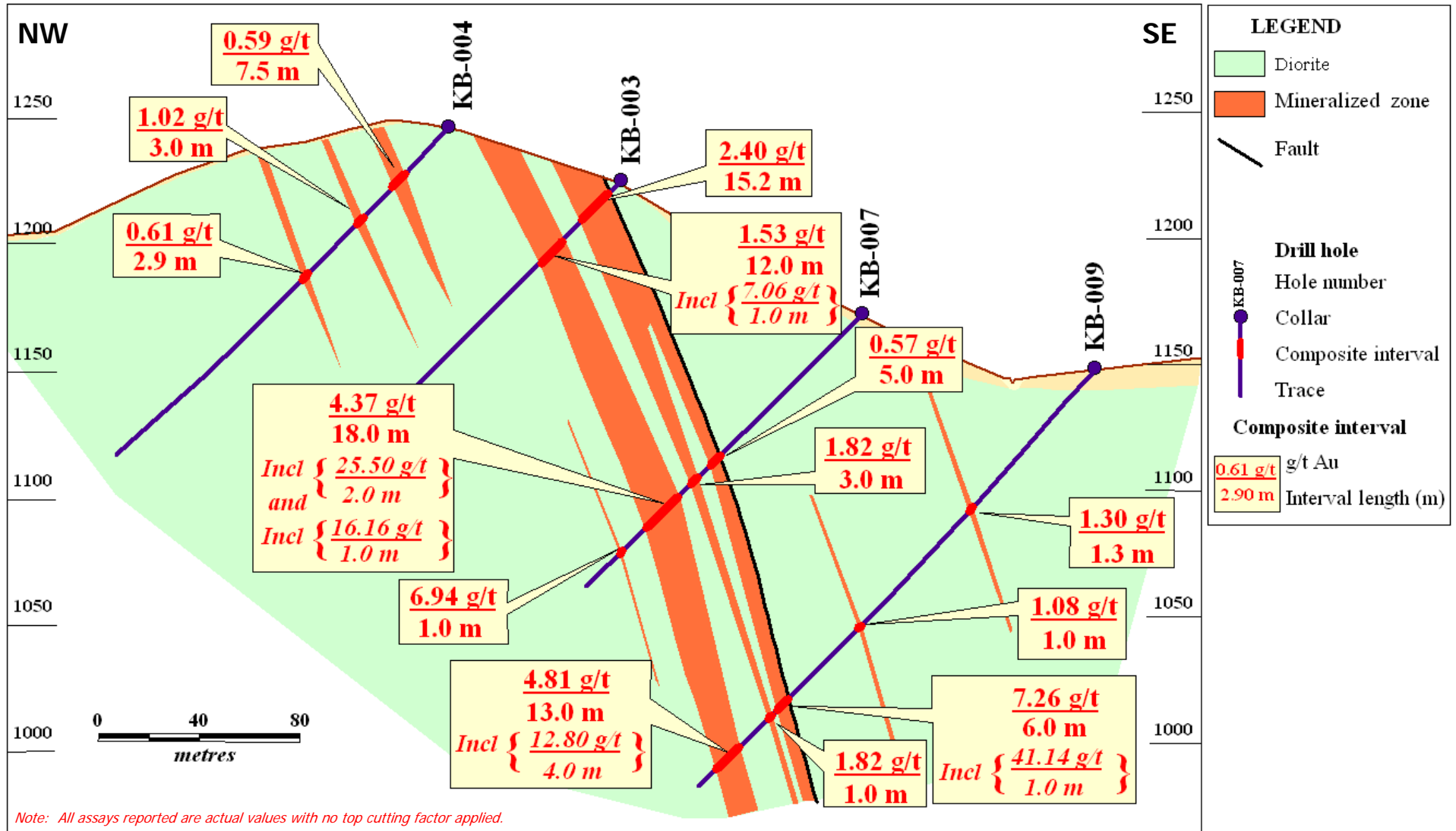
This information should be read together with our news release of November 15th, 2010. Ian Atkinson, a Certified Professional Geologist, is Centerra's qualified person for the purpose of National Instrument 43-101.

Kara Beldyr - Q3 2010 Gord Section 18



This information should be read together with our news release of November 15th, 2010. Ian Atkinson, a Certified Professional Geologist, is Centerra's qualified person for the purpose of National Instrument 43-101.

Kara Beldyr - Q3 2010 Gord Section 19



This information should be read together with our news release of November 15th, 2010. Ian Atkinson, a Certified Professional Geologist, is Centerra's qualified person for the purpose of National Instrument 43-101.