

Figure 1: Underground development remaining to projected initial production (as of April 12, 2015)

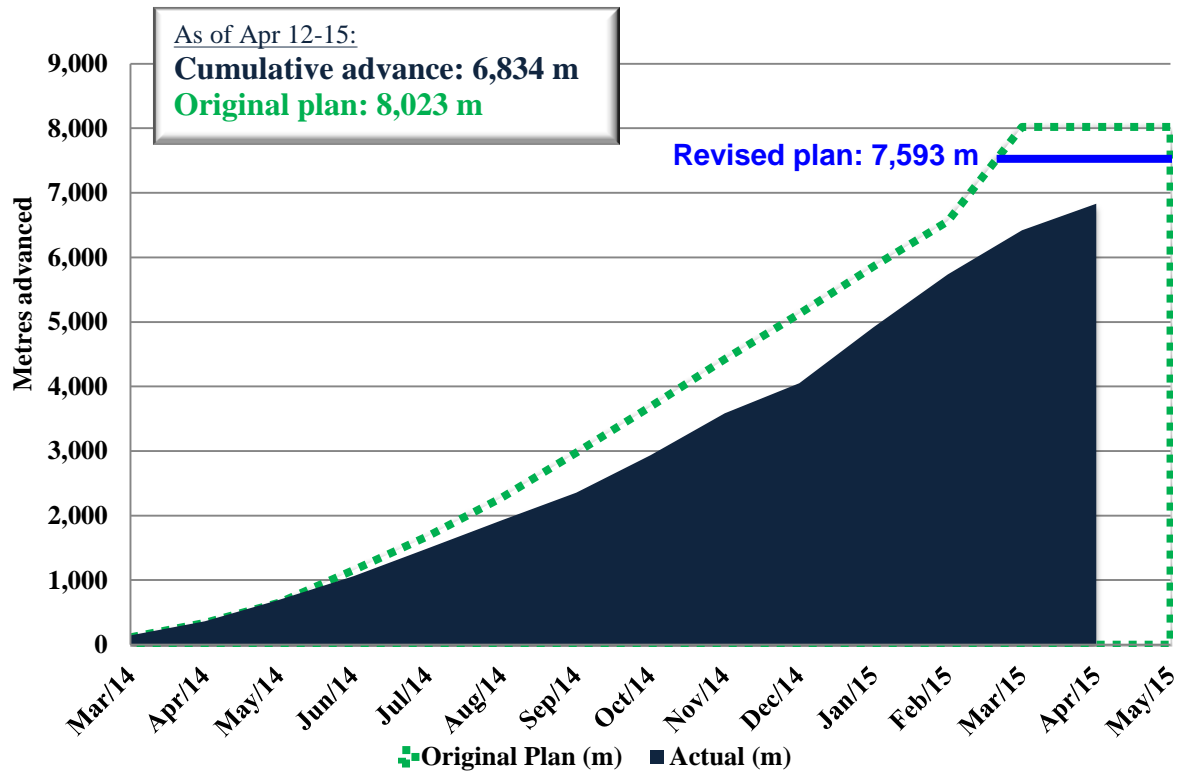


Figure 2: Crusher installation above 305-metre level

Planned upper-level underground development

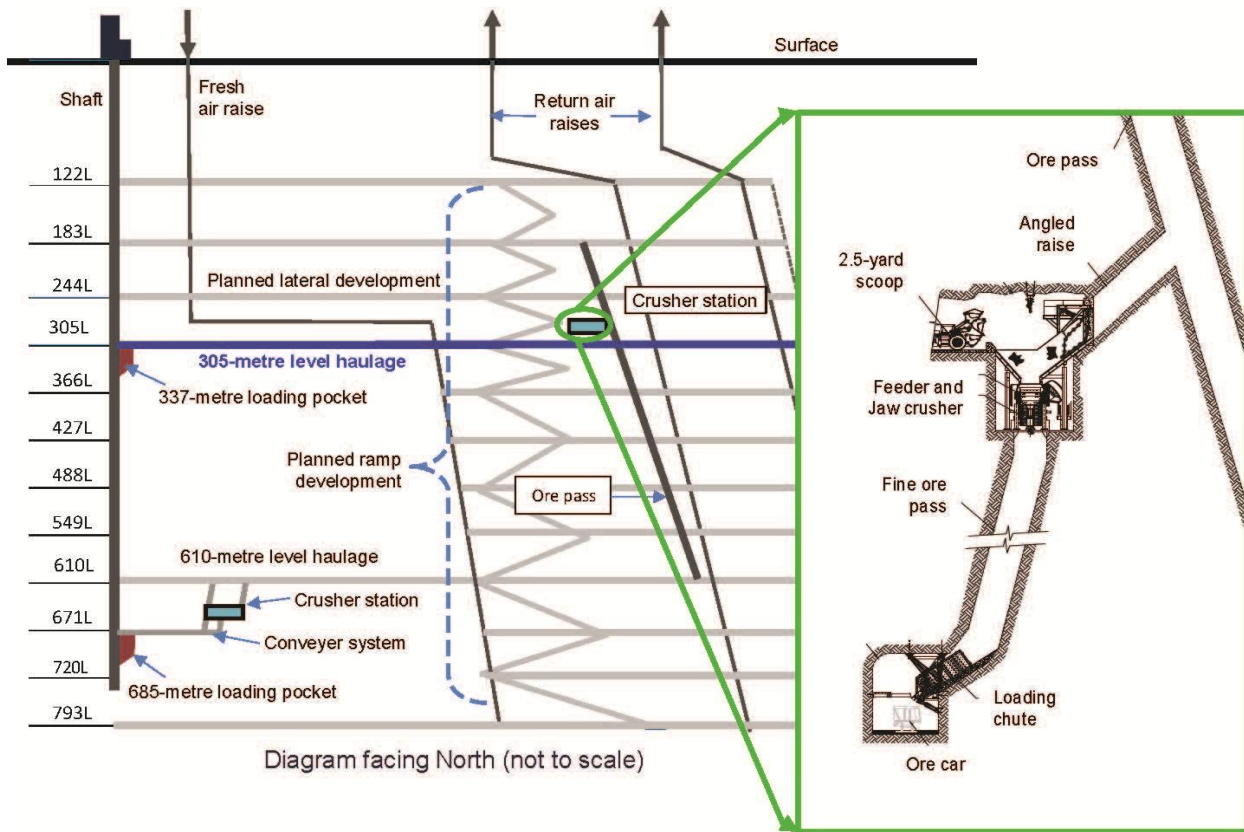


Figure 3: Pictures of Mill, Surface and On-Site Construction



Carbon elution plant commissioning



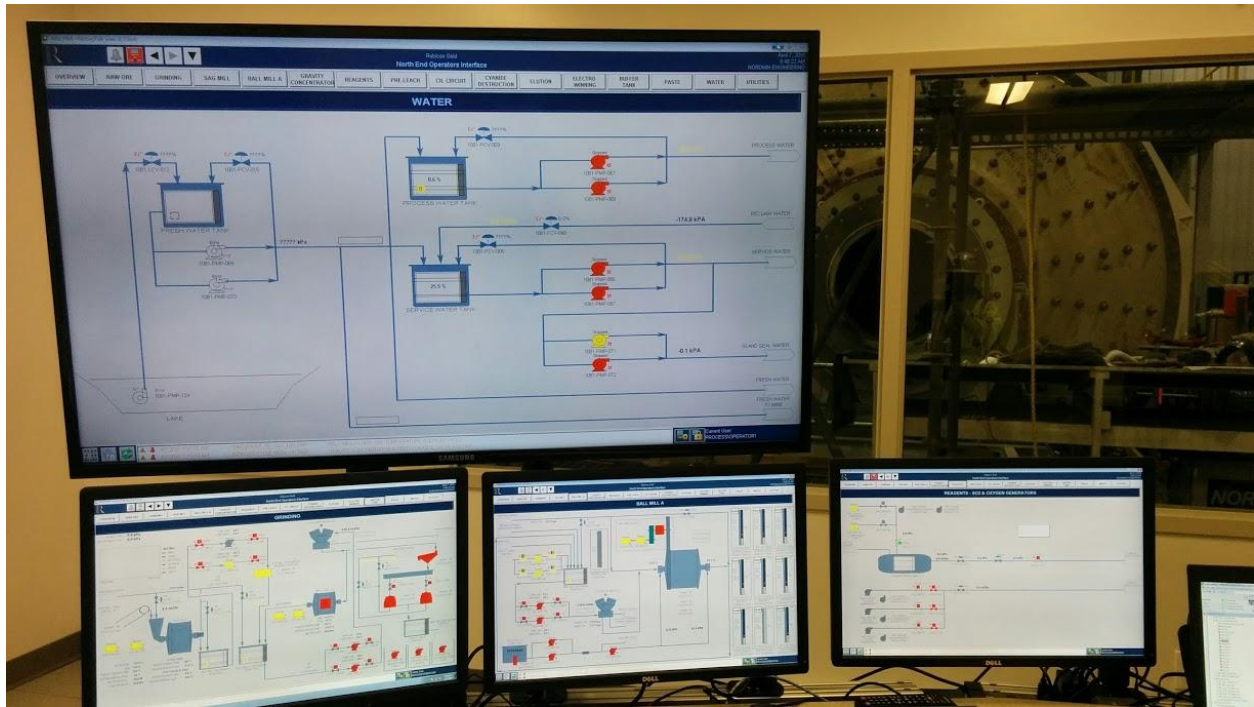
SAG and ball mill installation



Installation of pumps in the grinding area



Reagents area commissioning



Control room equipment commissioning



Compressor building installation



Top of the carbon-in-leach tanks with platforms installed



View of the completed crushed ore bin, construction of the conveyor system, and mill thickener outside the mill building.



Underground crusher on site in preparation for installation above the 305-metre level