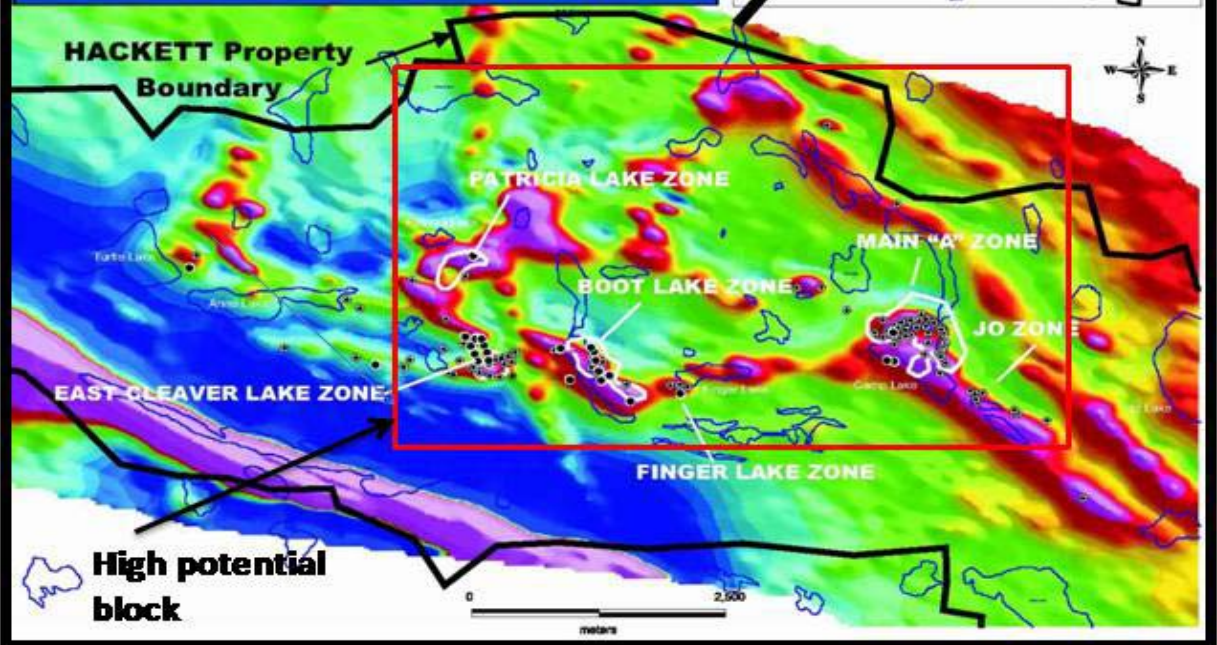
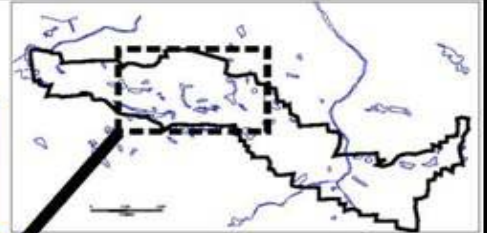




### AIRBORNE MAGNETIC SURVEY HACKETT PROPERTY

- SABINA'S 2004 DDHs
- PREVIOUS DDHs (other companies)
- GRAVITY TARGETS



| Summary of 2008 Drill Hole Composite Assays       |                   |              |          |                       |        |              |        |          |        |        |          |                     |
|---|-------------------|--------------|----------|-----------------------|--------|--------------|--------|----------|--------|--------|----------|---------------------|
| Hackett River Project - Sabina Silver Corporation |                   |              |          |                       |        |              |        |          |        |        |          |                     |
| Hole ID   | Zone              | Section Line | Sub Unit | From (m)              | To (m) | Interval (m) | Zn (%) | Ag (g/T) | Cu (%) | Pb (%) | Au (g/T) | True Width Estimate |
| SHR-08-25   | East Cleaver Zone | KN4002N      | 1        | 210.00                | 212.75 | 2.75         | 2.65   | 76.5     | 2.01   | 0.01   | 0.30     | 0.75                |
|   |                   |              | 2        | 220.20                | 224.75 | 4.55         | 0.70   | 53.3     | 1.23   | 0.00   | 0.75     |                     |
|   |                   |              | 3        | 281.35                | 282.50 | 1.15         | 4.79   | 75.6     | 0.03   | 0.40   | 0.76     |                     |
| SHR-08-39   | JO Zone           | JO101.5N     | 1        | 25.40                 | 30.80  | 5.40         | 18.37  | 235.3    | 0.13   | 1.47   | 0.04     | 0.98                |
|   |                   |              | incl.    | 26.90                 | 29.30  | 2.40         | 40.29  | 483.8    | 0.20   | 3.23   | 0.06     |                     |
| SHR-08-40   | JO Zone           | JO100.5N     | 1        | 13.35                 | 30.60  | 17.25        | 6.96   | 235.1    | 0.22   | 0.91   | 0.18     | 0.92                |
|   |                   |              | incl.    | 14.25                 | 20.15  | 5.90         | 11.79  | 308.6    | 0.19   | 1.71   | 0.15     |                     |
|   |                   |              | and      | 25.40                 | 28.45  | 3.05         | 11.97  | 110.1    | 0.08   | 0.19   | 0.20     |                     |
|   |                   |              | 2        | 34.55                 | 43.35  | 8.80         | 4.18   | 501.6    | 8.32   | 0.26   | 0.45     |                     |
|   |                   |              | incl.    | 38.80                 | 43.35  | 4.55         | 3.93   | 756.8    | 13.88  | 0.04   | 0.68     |                     |
| SHR-08-41   | JO Zone           | JO101.5N     | 1        | 31.95                 | 39.65  | 7.70         | 18.51  | 413.1    | 0.06   | 1.61   | 0.12     | 0.81                |
|   |                   |              | incl.    | 33.85                 | 38.35  | 4.50         | 31.48  | 486.8    | 0.06   | 2.49   | 0.07     |                     |
|   |                   |              | and      | 34.40                 | 37.55  | 3.15         | 37.12  | 548.4    | 0.05   | 2.81   | 0.07     |                     |
| SHR-08-42   | JO Zone           | JO100.5N     | 1        | 27.05                 | 39.60  | 12.55        | 4.78   | 379.5    | 0.27   | 1.47   | 0.37     | 0.78                |
|   |                   |              | incl.    | 27.85                 | 31.10  | 3.25         | 6.35   | 802.0    | 0.56   | 3.60   | 0.67     |                     |
|   |                   |              | 2        | 49.15                 | 65.00  | 15.85        | 6.74   | 122.6    | 1.26   | 0.20   | 0.17     |                     |
|   |                   |              | incl.    | 49.15                 | 50.60  | 1.45         | 4.42   | 564.2    | 4.89   | 0.58   | 0.29     |                     |
|   |                   |              | incl.    | 57.00                 | 59.60  | 2.60         | 18.81  | 61.0     | 0.20   | 0.50   | 0.06     |                     |
| SHR-08-43   | JO Zone           | JO102n       |          | No Significant Values |        |              |        |          |        |        |          | 0.98                |