

LEGEND

- | | |
|---|--|
| <ul style="list-style-type: none"> Undifferentiated granites. Various areas of granitic lithology located in the Butare Complex. Gw. Gishwati Complex, undifferentiated metaquartzite, quartzitic and mica schists metasediments, amphiboles and numerous mylonites. Ho: Valley alluviums, low and middle terraces, fan deltas. Undifferentiated Holocene and Pleistocene. RUREMBO CONCESSION | <ul style="list-style-type: none"> (St) Satsinyi Complex: Phyllites (Biotite, chloritoids, garnet), chloritochists, quartzite, probable metavolcanic rocks and several basic intrusions (amphiboles). -Cr: Cyurugeyo Super formation (1100 to 1500 m). The top (Kibuye Formation) is pelitic, fine laminated grey quartzophyllites while the base (Cyurugeyo Formation) is arenaceous and pellic with alternating centimetric to metric sequences of dark quartzite, quartzophyllites and dark phyllites. Millimetric or decimetric levels of probably volcanic origin; locally massive or diffuse dolomite. -Uv: Uwinka Formation (500m). Phyllites dominant: banded bicoloured quartzophyllites, generally black/light grey or black/red. Bumbogo Formation(Bb): Alternation of sandstone or quartzite and phyllites shales with dominant fine grained sandstone in small layers towards the top of the Formation. Volcanic rocks of the Birunga chain (undifferentiated) Volcanic rocks of the Birunga chain (undifferentiated) |
|---|--|

Figure One: Regional Geological Setting of the Rurembo Licence Area

NO. 0185/MINIREM/A/2012

TOPOGRAPHIC MAP OF PTR_4 AND PTR_3

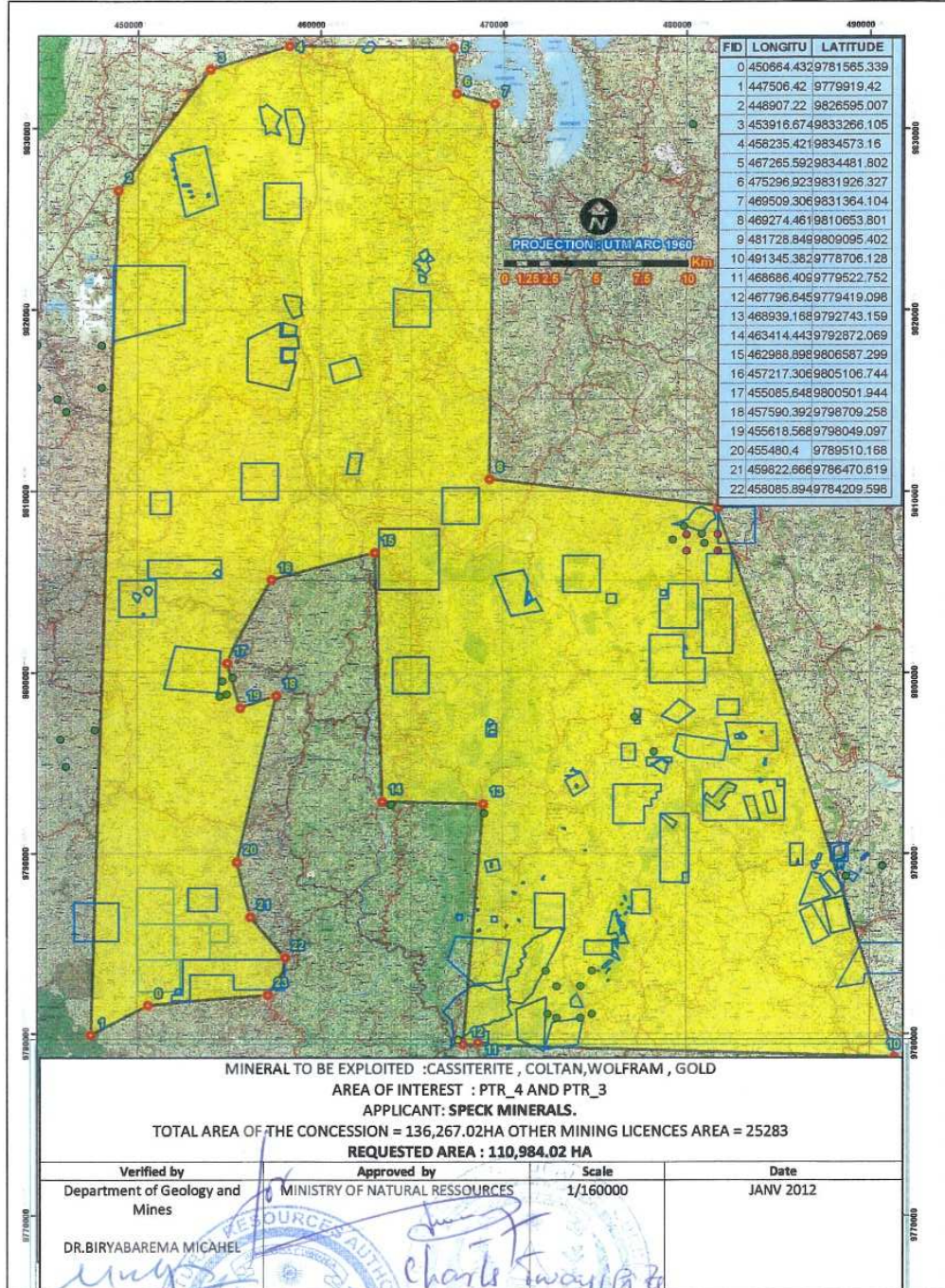


Figure Two: The Rurembo Prospecting Licence Area with Artisanal Mine Locations shown within the Tenure Boundares.