

355000

360000

365000

6780000

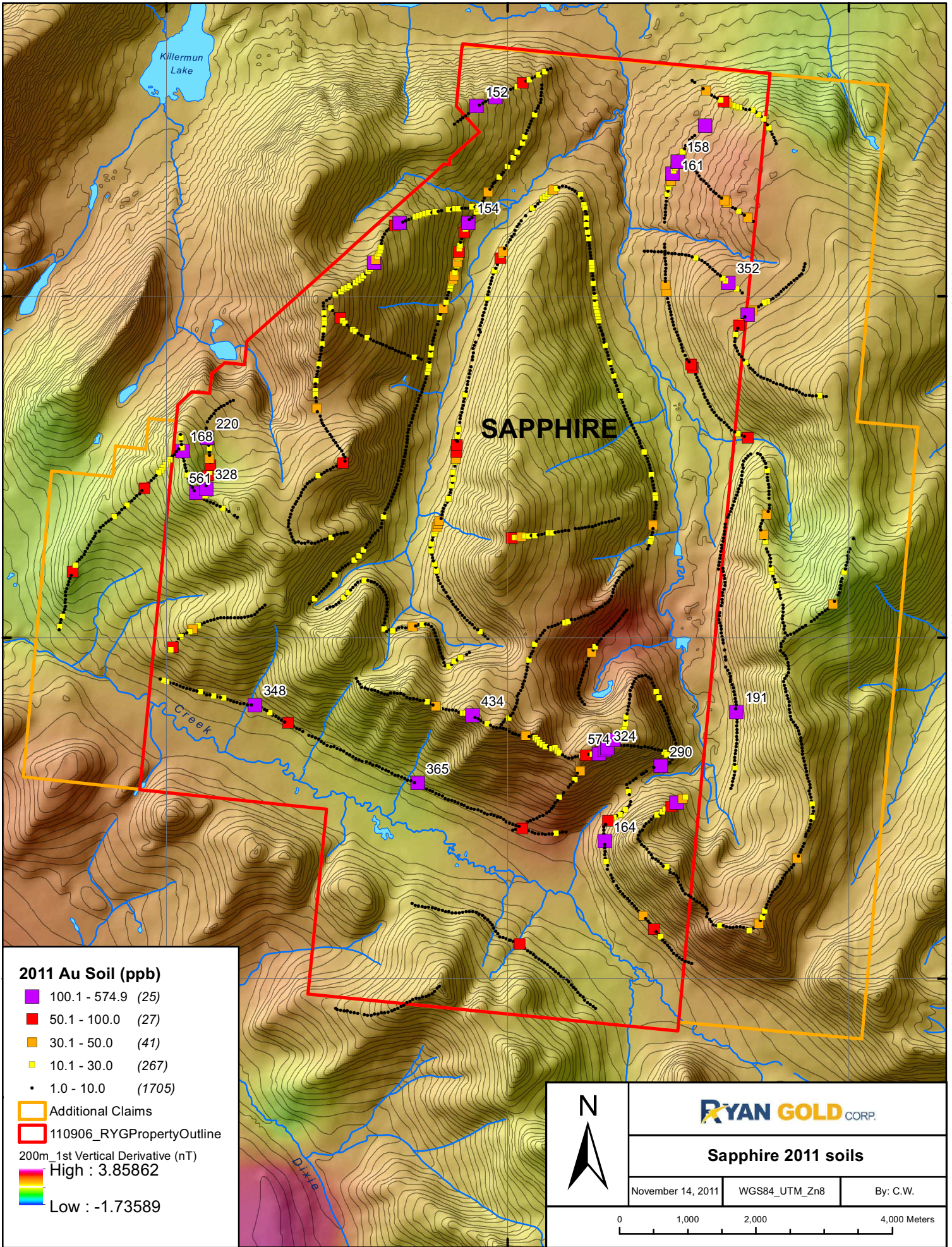
6780000

6775000

6775000

6770000

6770000



SAPPHIRE

Creek

Dixie

2011 Au Soil (ppb)

- 100.1 - 574.9 (25)
- 50.1 - 100.0 (27)
- 30.1 - 50.0 (41)
- 10.1 - 30.0 (267)
- 1.0 - 10.0 (1705)

- Additional Claims
- 110906_RYGPropertyOutline

200m_1st Vertical Derivative (nT)
█ High : 3.85862
█ Low : -1.73589



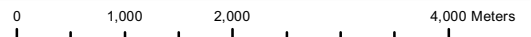
RYAN GOLD CORP.

Sapphire 2011 soils

November 14, 2011

WGS84_UTM_Zn8

By: C.W.



355000

360000

365000