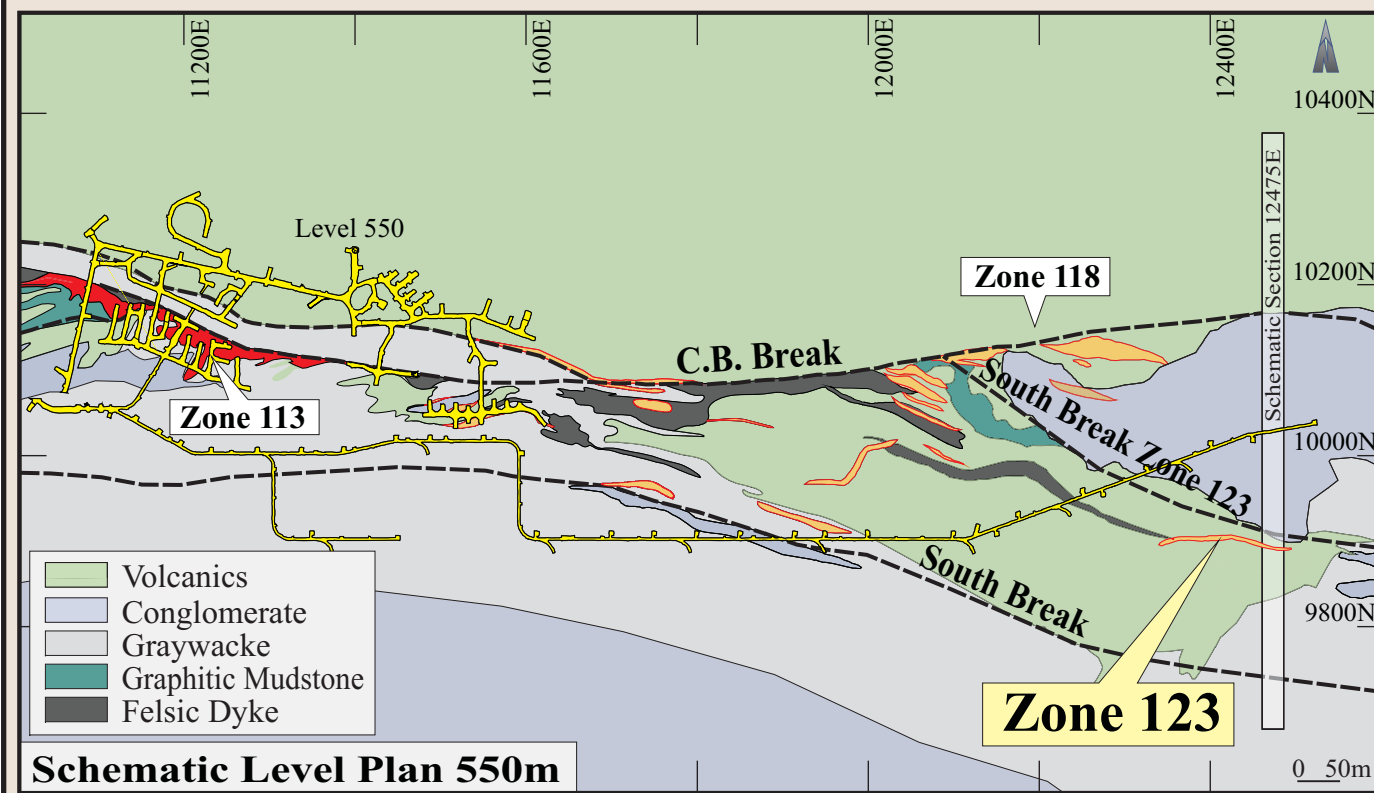
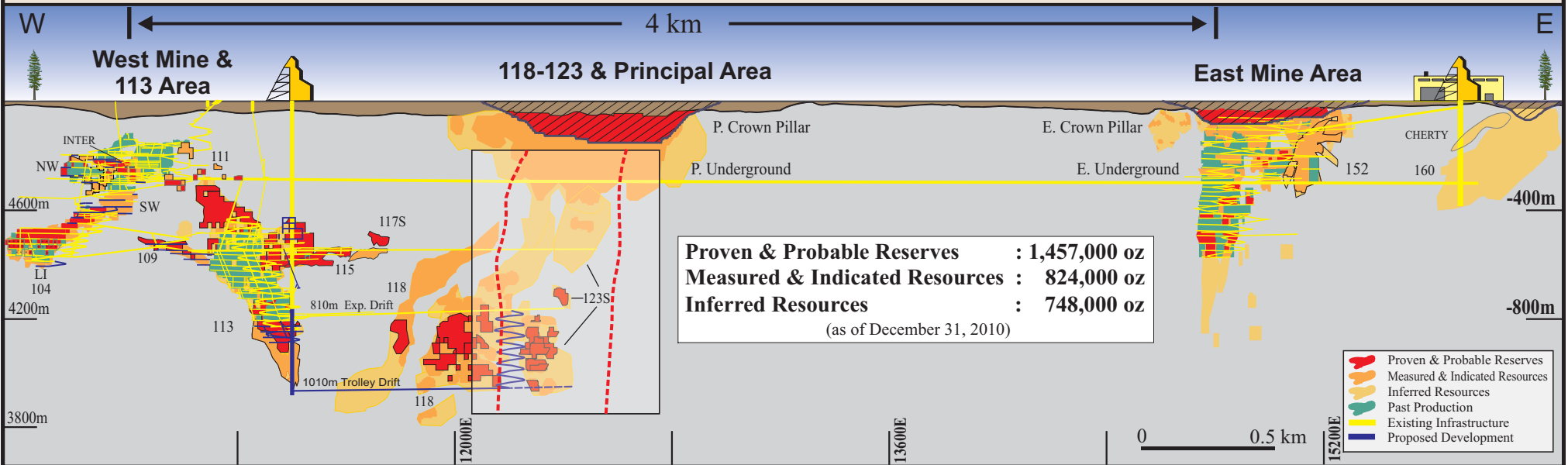


CASA BERARDI MINE

Composite Longitudinal Section



- ★ New hole - intercept $\geq 3\text{g/t}$ and/or metal factor ≥ 10
 - ★ New hole - intercept $< 3\text{g/t}$ and/or metal factor < 10
 - ▲ Previously released by Aurizon - intercept $\geq 3\text{g/t}$ and/or metal factor ≥ 10
 - ▲ Previously released by Aurizon - intercept $< 3\text{g/t}$ and/or metal factor < 10
 - Historical hole - intercept $\geq 3\text{g/t}$ and/or metal factor ≥ 10
 - Historical hole - intercept $< 3\text{g/t}$ and/or metal factor < 10
 - - - Favorable Gold Corridor
- 2.4/15.0 =grams per tonne gold / metres (true width)
- Metal Factor = grade x width



CASA BERARDI GOLD MINE
(Quebec)

Follow Up Drilling Along the
123 Zone

September 6, 2011