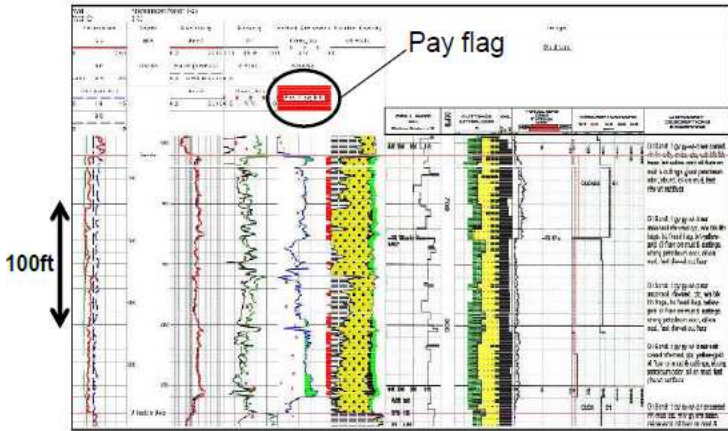
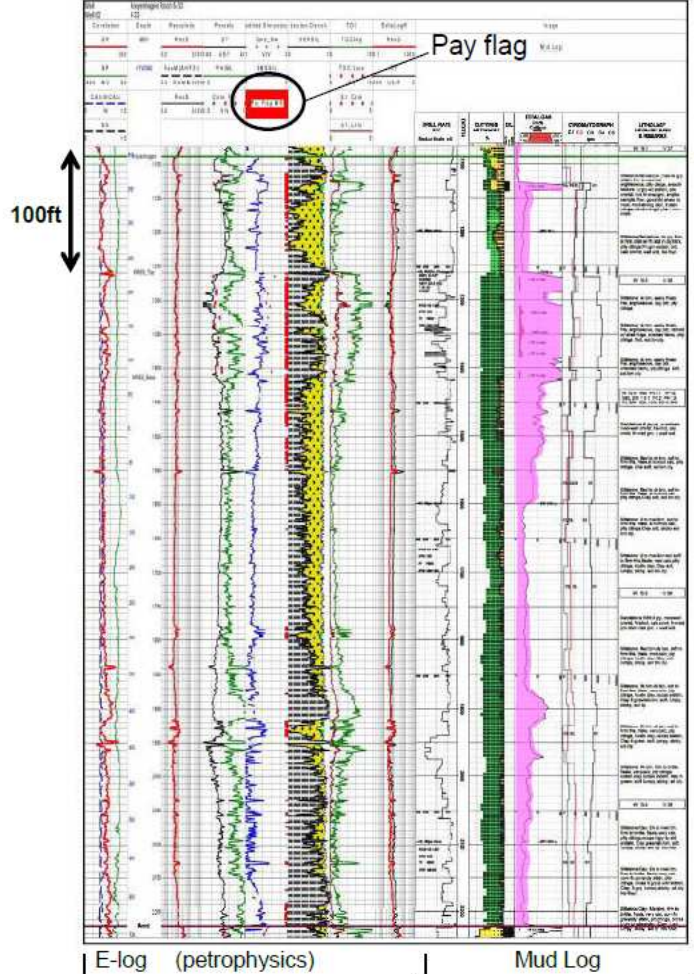


# Potential Oil Payzones\* interpreted from well data (Mud logs and E-logs)

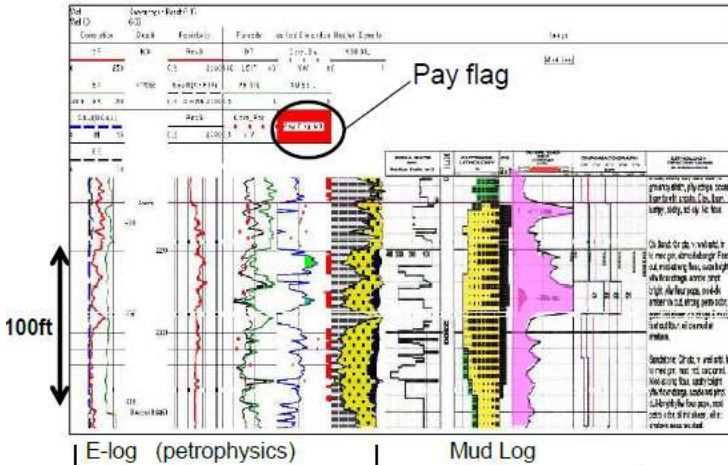
**Tembler Heavy oil zone (proven oil productive)  
Well 1-33**



**Kreyenhagen Shale light oil zone (early evaluation)  
Well 6-33**



**Avenal light oil zone (tested oil and gas)  
Well 6-33**



\*Reference: Resource Assessment of Certain P&NG Holdings in the Kreyenhagen Area for Solimar Energy Limited (as of 31 October, 2011) - By Sproule Unconventional Limited. This report was highlighted in a release to the ASX and Canada on 18 November, 2011. A copy is on Solimar Energy's website under "Investor Centre" and "Resource Reports".