

Figure 1: Mill Throughput Tonnes per Day

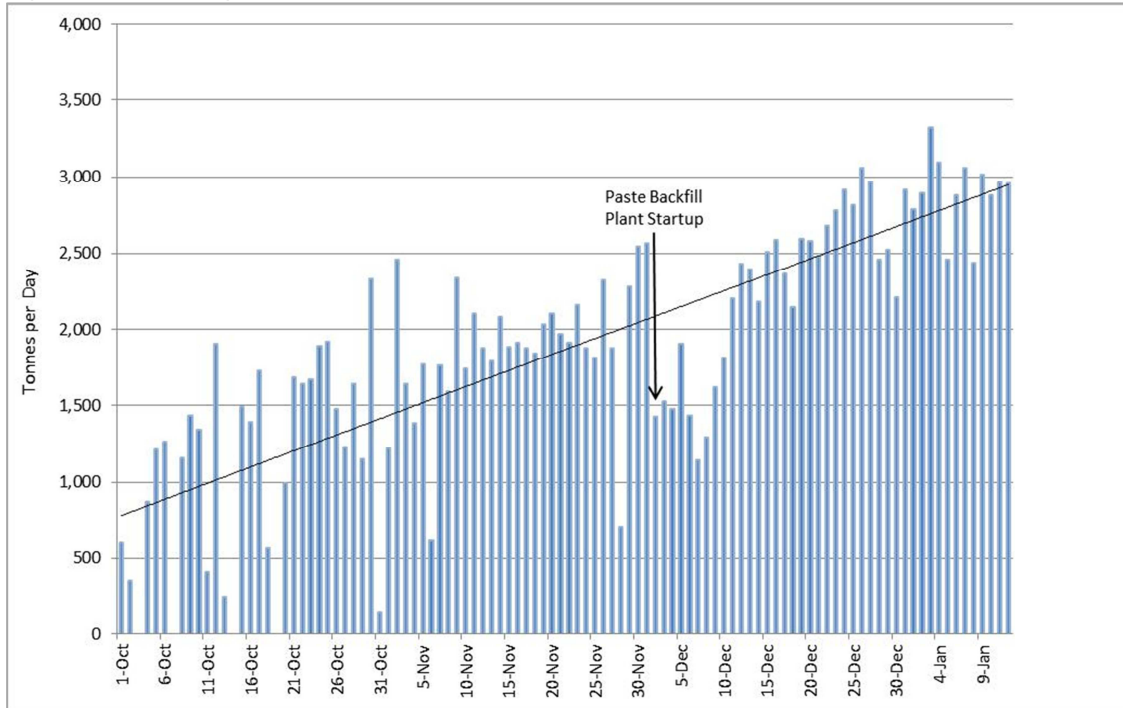


Figure 2: Silver Recovery to Concentrate

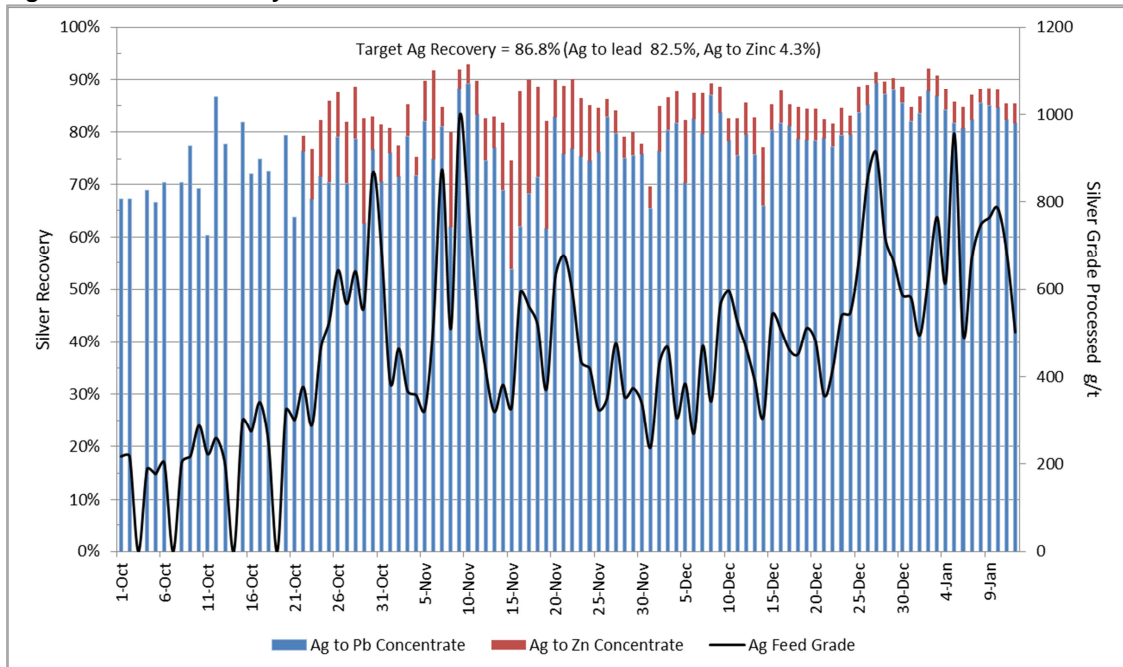


Figure 3: Silver Grade in Lead Concentrate

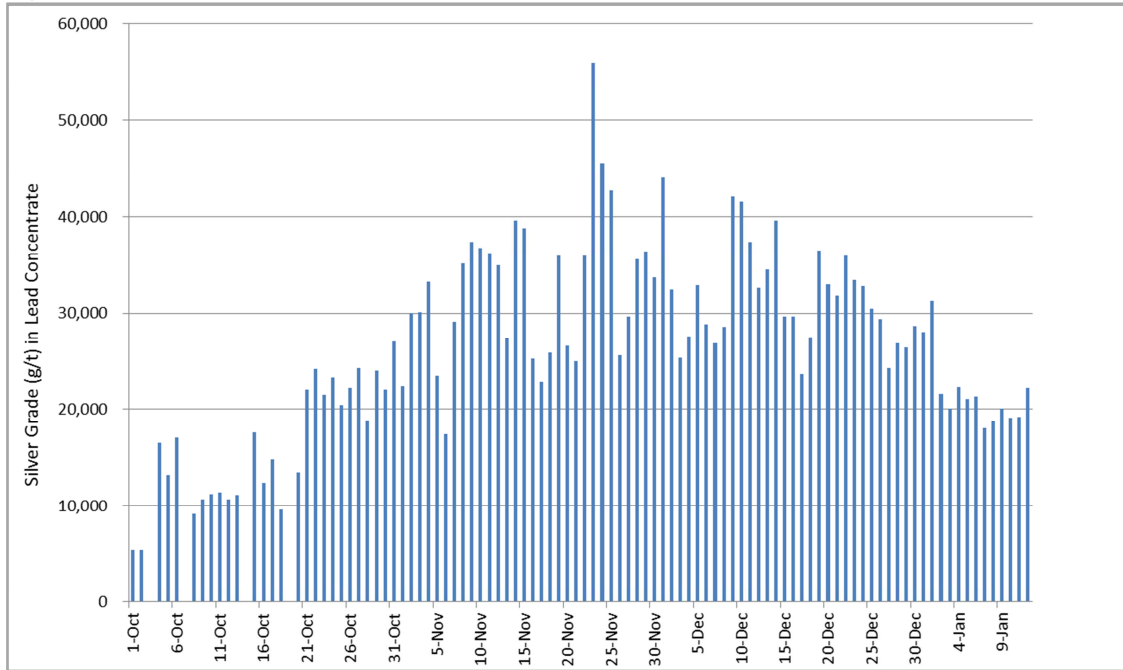
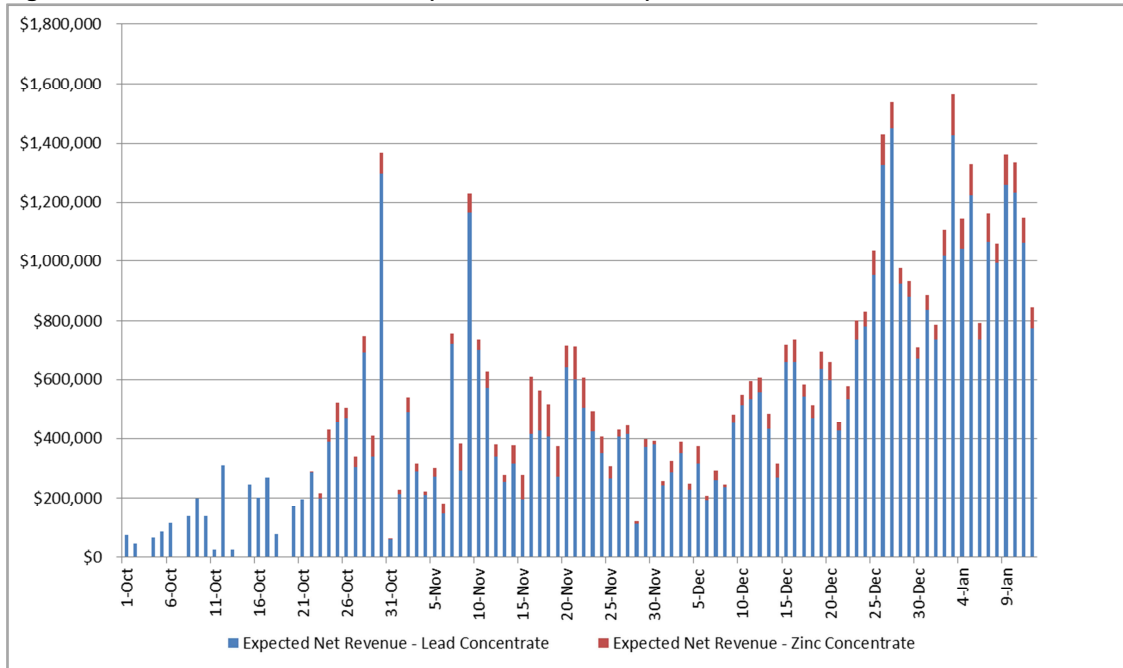


Figure 4: Estimated Production Value (Net Smelter Return)



Note: Metals prices used for net revenue calculations are \$20.00 per ounce Ag; \$1,200.00 per ounce Au; \$0.95 per pound Pb; \$0.90 per pound Zn.