

Smarts Deposit						
Mineral Resource Estimate						
Cut-off	Indicated			Inferred		
	Tonnes t	Au g/t	Au Ounces	Tonnes t	Au g/t	Au Ounces
0.5g/t	3,040,000	4.6	446,800	6,261,000	3.2	638,900
1.0g/t	2,914,000	4.7	442,000	5,538,000	3.5	621,000
2.0g/t	2,507,000	5.2	423,000	3,773,000	4.4	537,100
Hicks Deposit						
Mineral Resource Estimate						
Cut-off	Indicated			Inferred		
	Tonnes t	Au g/t	Au Ounces	Tonnes t	Au g/t	Au Ounces
0.5g/t				11,500,000	1.7	640,000
1.0g/t				8,652,000	2.1	571,000
2.0g/t				3,100,000	3.2	320,000
Total West Omai Project						
Mineral Resource Estimate						
Cut-off	Indicated			Inferred		
	Tonnes t	Au g/t	Au Ounces	Tonnes t	Au g/t	Au Ounces
0.5g/t	3,040,000	4.6	446,800	17,761,000	2.2	1,278,900
1.0g/t	2,914,000	4.7	442,000	14,190,000	2.6	1,192,000
2.0g/t	2,507,000	5.2	423,000	6,873,000	3.9	857,100

Table 1 – Mineral Resource Estimate – West Omai Project

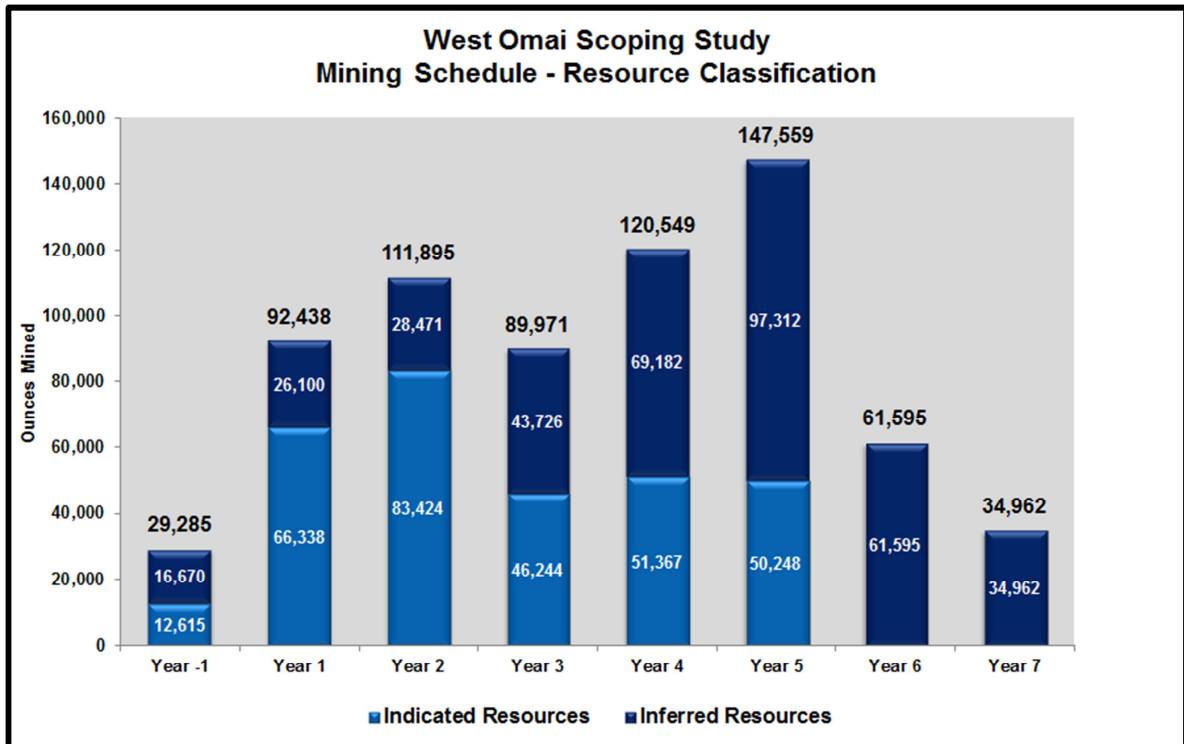


Figure 1 – Resource Classification

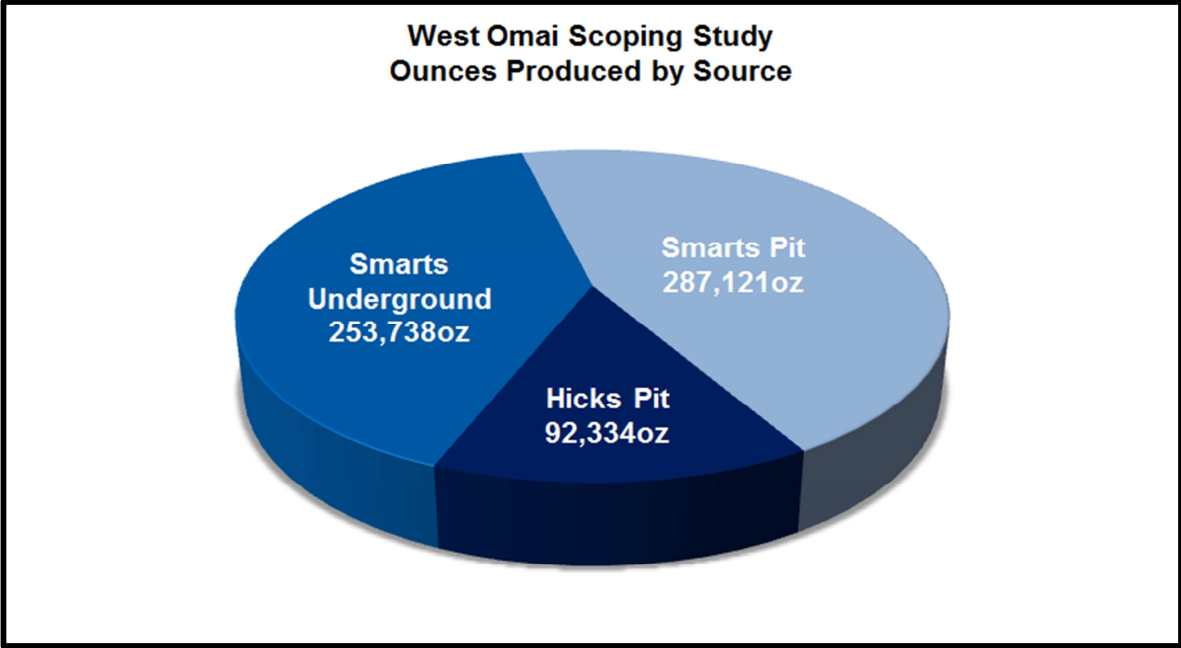


Figure 2 – Ounces Produced by Source

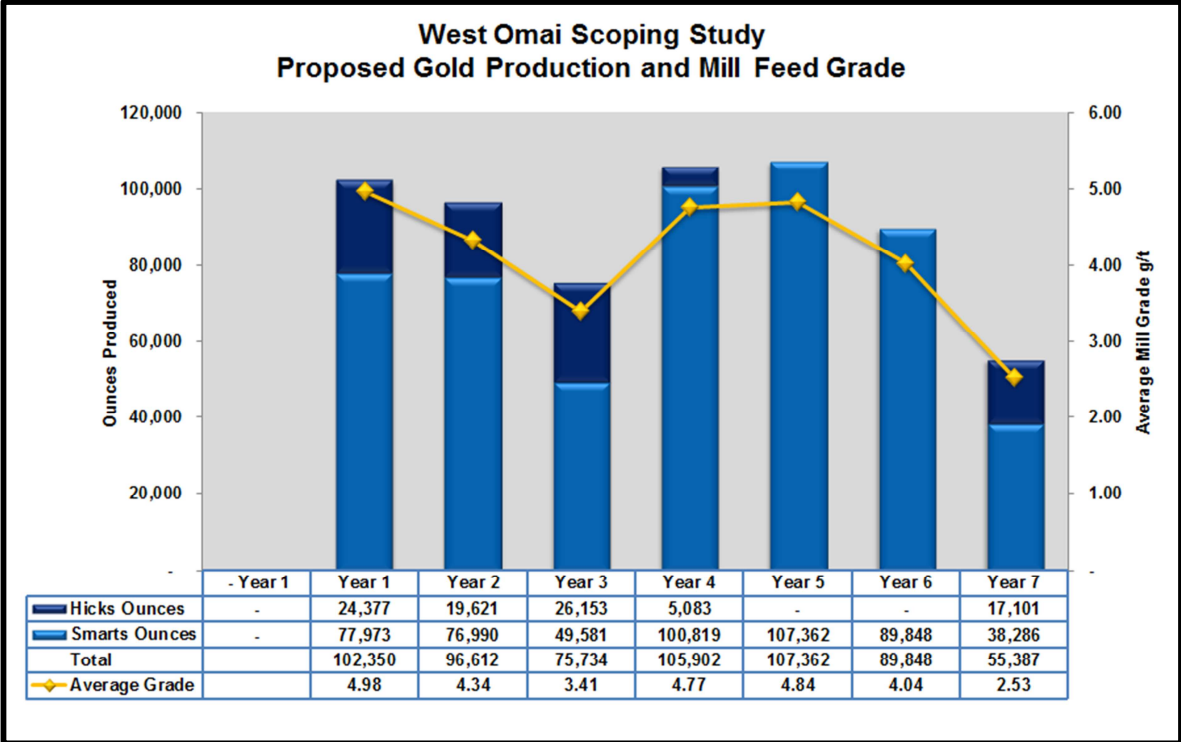


Figure 3 – Proposed Gold Production and Mill Feed Grade

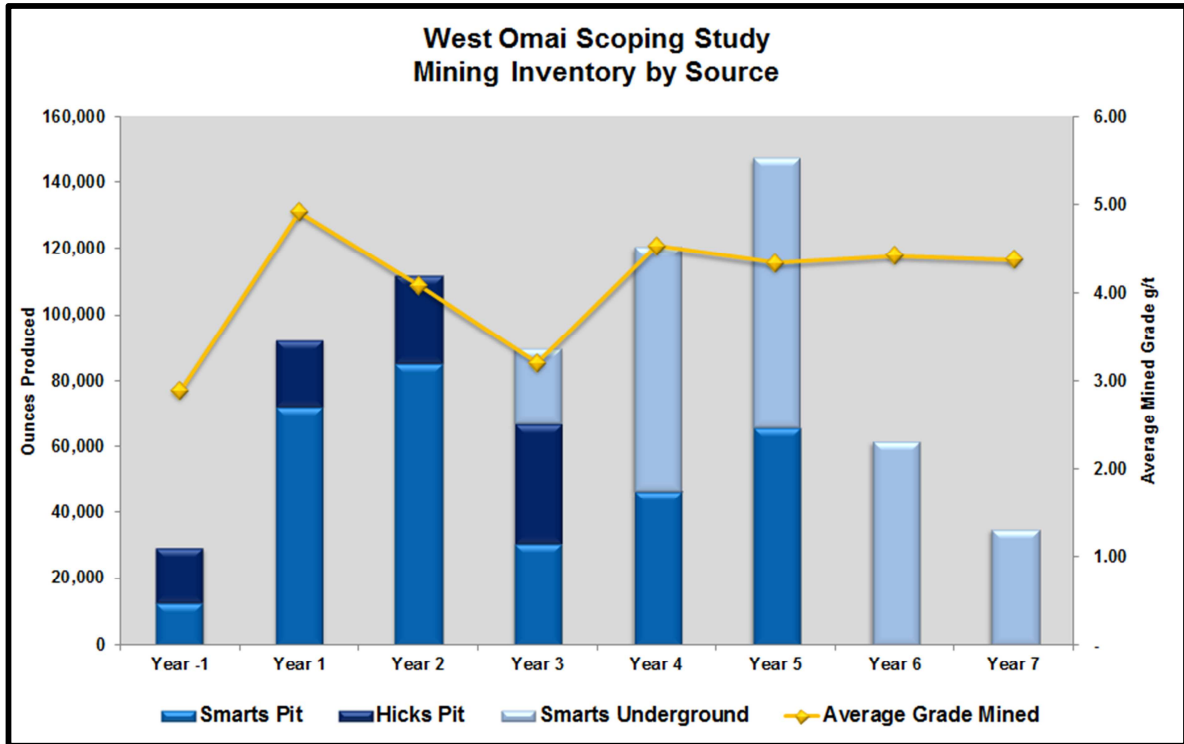


Figure 4 – Mining Inventory by Source

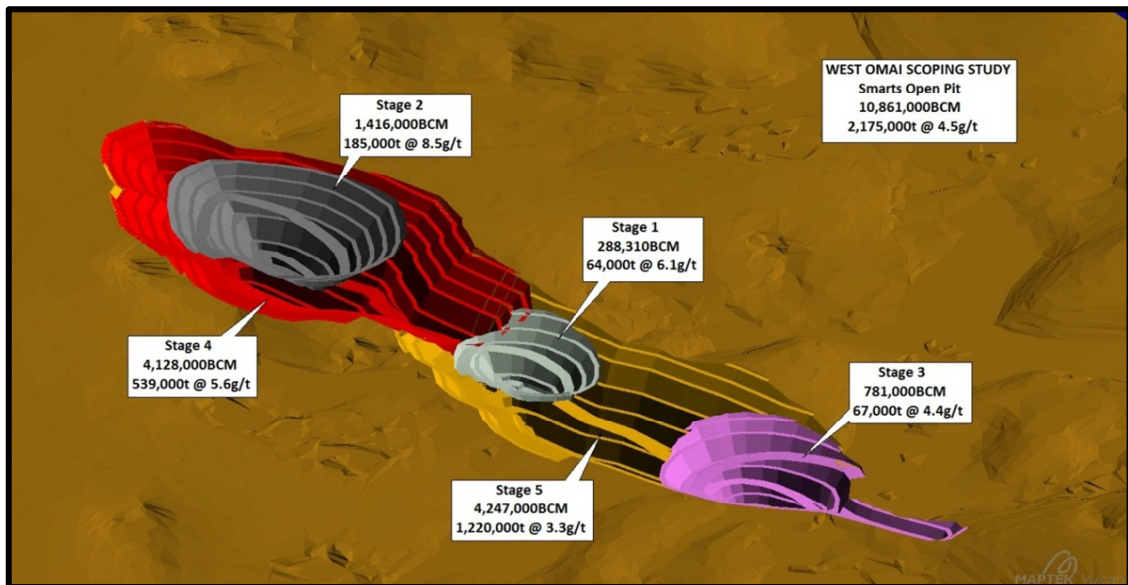


Figure 5 – Development of Smarts Deposit

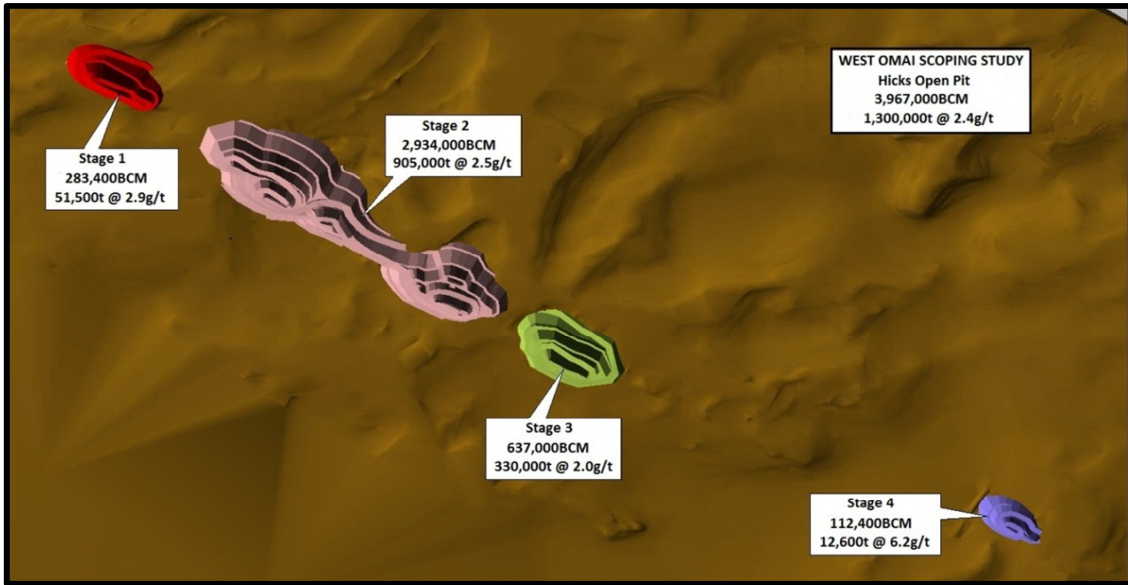


Figure 6 – Development of Hicks Deposit

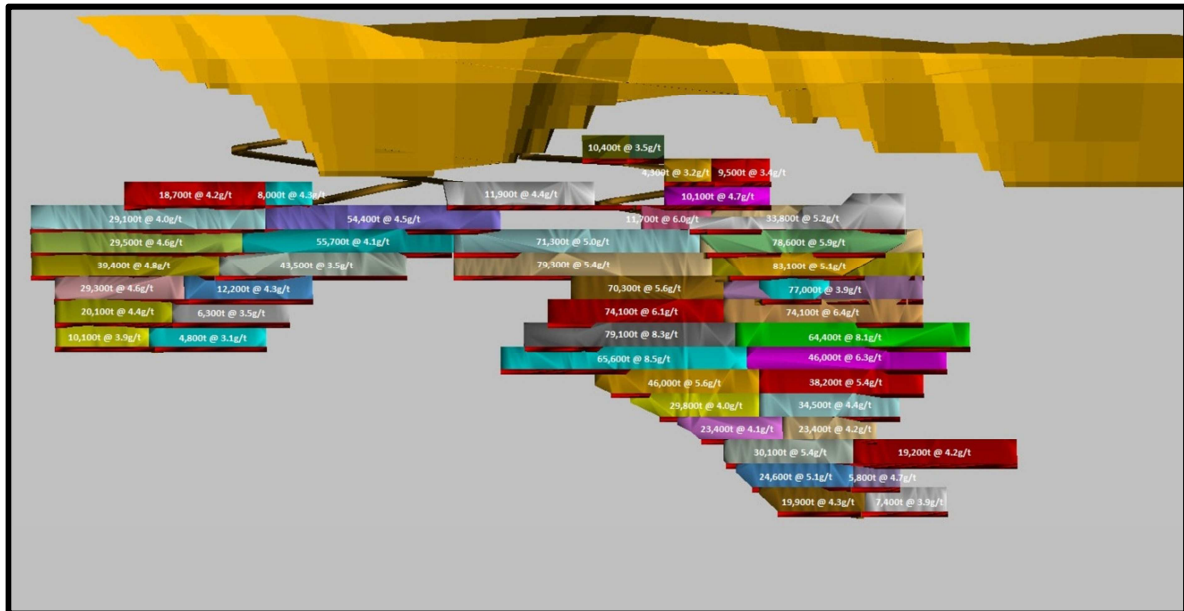
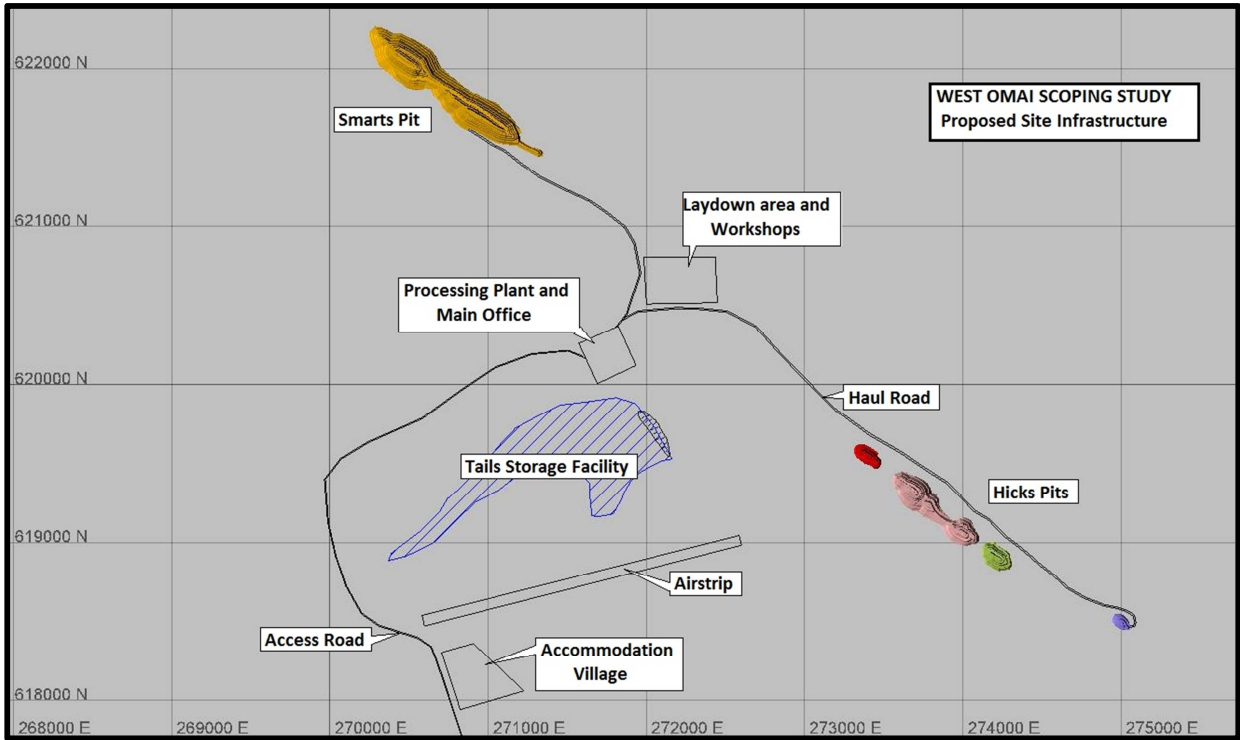
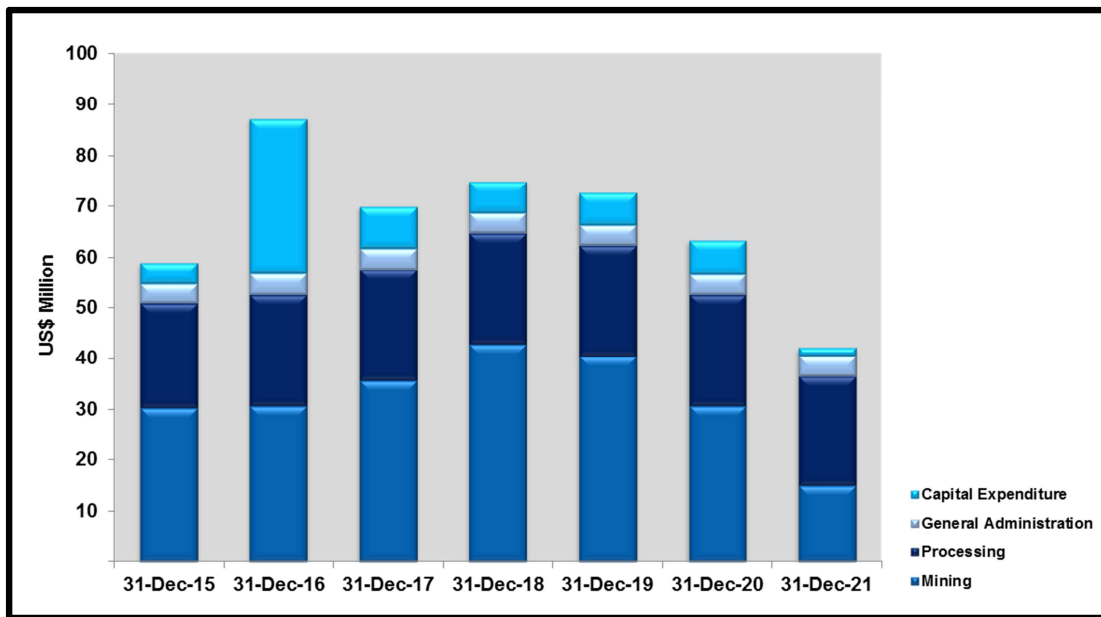


Figure 7 – Smarts Underground



**Figure 8 – Site Layout**



**Figure 9 – Total Cost Summary**

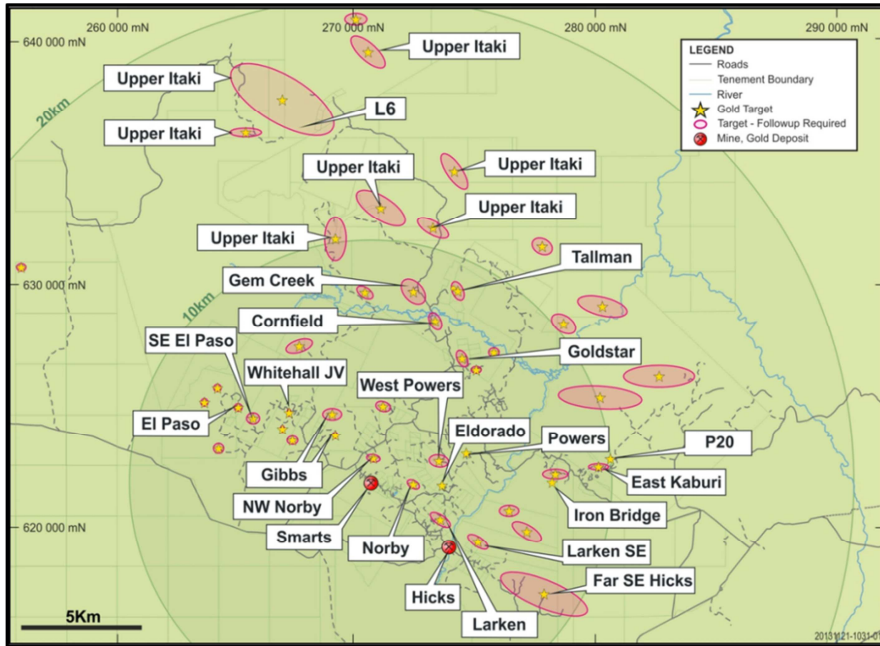


Figure 10 – Exploration Targets

### PROJECT LOCATIONS

