



TSX Venture Exchange: DON
Frankfurt Stock Exchange Symbol: D4M

Table 1: McLeod – McLeod Deep Drill Program

| DDH (Depth) | UTM Location NAD 83 Zone 18 | Angle / direction (True N) | Horizon | From (metres) | To (metres) | Core Length (metres) | ETW (metres) | Zn % | Cu % | Ag g/t | Au g/t |
|-------------------------|-----------------------------|----------------------------|-----------|---------------|-------------|----------------------|--------------|----------------|------|--------|--------|
| MCL-13-25 (1102 metres) | 308210E, 5504964N | -86°/024° | KT | 932.40 | 945.20 | 12.80 | 7.33 | 9.42 | 2.51 | 35.71 | 0.81 |
| | | | Pipe | 995.50 | 1,001.70 | 6.20 | 3.59 | Assays Pending | | | |
| | | | Pipe | 1,014.90 | 1,017.20 | 2.30 | 1.34 | Assays Pending | | | |
| MCL-13-26 (1208 metres) | 308380E, 5504890N | -85°/009° | KT | 1,141.40 | 1,150.70 | 9.30 | 3.59 | 5.77 | 1.16 | 26.52 | 0.76 |
| | | | including | 1,141.40 | 1,148.00 | 6.60 | 2.55 | 7.90 | 1.14 | 27.30 | 0.90 |
| | | | FW | 1,158.50 | 1,160.50 | 2.00 | 0.77 | 5.99 | 0.40 | 7.45 | 0.17 |

ETW = Estimated true width. IS = insufficient sample. Depth = Total depth drilled in metres. KT = Key Tuffite horizon. HW = Hanging wall to the Key Tuffite. FW = Footwall to the Key Tuffite. Pipe = Hydrothermal alteration that occurs below and in close proximity to sulphide-bearing massive and semi-massive sulphide deposits. "Pipe" alteration is defined as intense chlorite alteration typically underlying or surrounding zones of massive sulphide development and is indicative of a hydrothermal vent system associated with mineralization in the Matagami Camp. Magnetite, chalcopyrite, pyrite, sphalerite, silica and talc may occur with chlorite.

Neither the TSX Venture Exchange nor its regulation services provider (as that term is defined in the policies of the TSX Venture Exchange) accepts responsibility for the adequacy or accuracy of this news release.

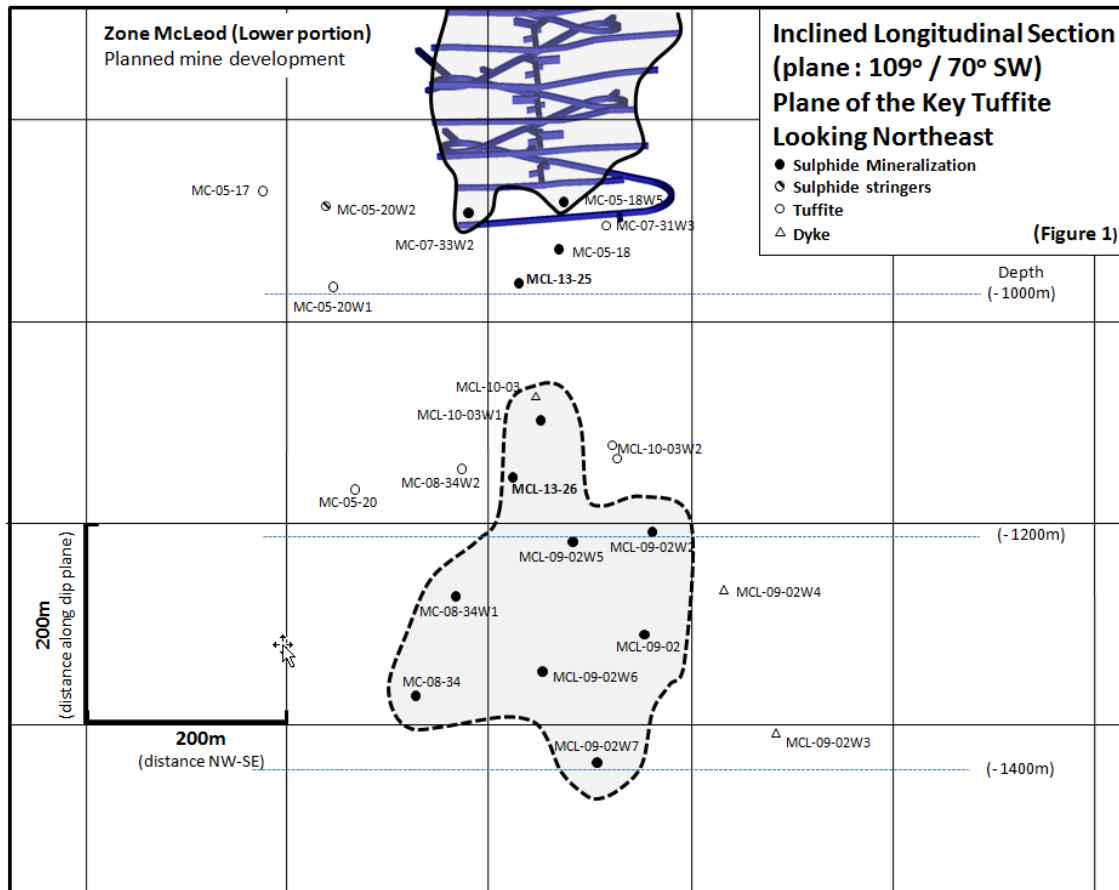


Table 2: McLeod Deep area diamond drill intersections

| Hole | From | To | Core Length (metres) | ETW (metres) | Zn % | Cu % | Ag g/t | Au g/t |
|------------------------------------|---------|---------|----------------------|--------------|-------|------|--------|--------|
| McLeod Deep Intersections | | | | | | | | |
| MC-08-34* | 1333.10 | 1335.22 | 2.12 | 1.02 | 10.8 | 1.35 | 37.8 | 0.59 |
| MCL-09-02* | 1280.40 | 1309.00 | 28.60 | 14.97 | 5.5 | 1.55 | 55.3 | 1.27 |
| MCL-09-02W2* | 1201.65 | 1212.55 | 10.90 | 7.78 | 8.00 | 3.00 | 43.6 | 0.89 |
| MCL-09-02W5* | 1215.10 | 1239.55 | 24.45 | 17.05 | 9.10 | 0.63 | 28.9 | 1.25 |
| MC-08-34W1* | 1247.05 | 1255.00 | 7.95 | 4.31 | 8.90 | 0.92 | 30.0 | 0.67 |
| MCL-10-03W1* | 1088.32 | 1100.00 | 11.68 | 5.92 | 7.60 | 0.31 | 9.2 | 0.41 |
| MCL-09-02W6* | 1302.55 | 1326.87 | 24.32 | 13.38 | 12.90 | 1.05 | 47.9 | 1.25 |
| MCL-09-02W7* | 1388.70 | 1391.55 | 2.85 | 1.30 | 12.40 | 2.66 | 51.90 | 1.50 |
| MC-05-18W5* | 891.60 | 892.18 | 0.58 | 0.37 | 11.70 | 2.21 | 36.40 | 0.01 |
| Other Related Intersections | | | | | | | | |
| MC-07-33W2* | 920.60 | 922.00 | 1.40 | 0.93 | 13.01 | 0.81 | 14.30 | 0.23 |
| MCL-05-18 | 925.10 | 925.95 | 0.85 | 0.56 | 22.70 | 0.46 | 0.00 | 0.47 |

(*previously reported in the Technical Report and Feasibility Study for the Bracemac-McLeod Project, Matagami Area, Quebec produced by GENIVAR Limited Partnership and Xstrata Zinc Canada, 2010)

Neither the TSX Venture Exchange nor its regulation services provider (as that term is defined in the policies of the TSX Venture Exchange) accepts responsibility for the adequacy or accuracy of this news release.