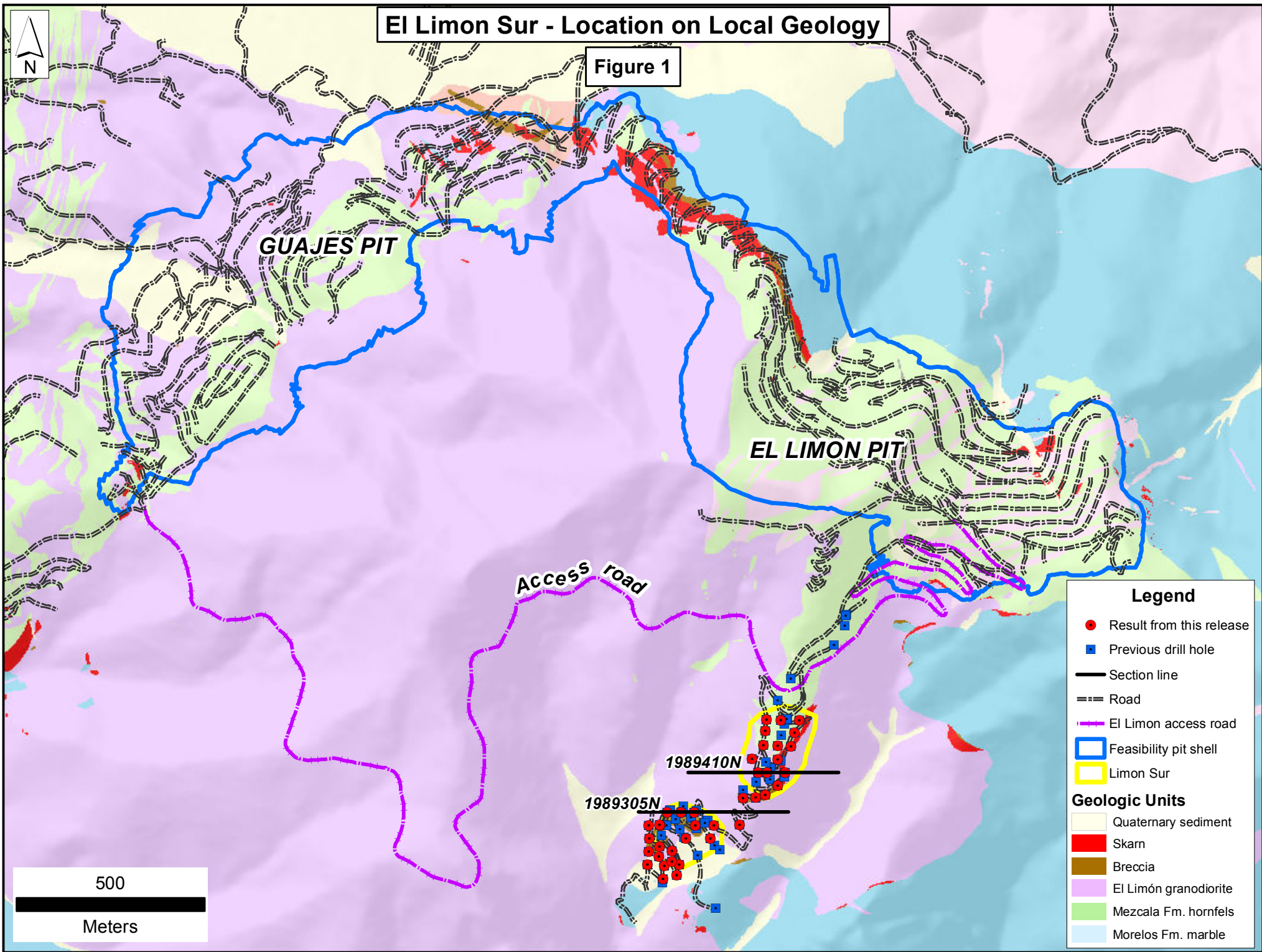


El Limon Sur - Location on Local Geology

Figure 1



Legend

- Result from this release
- Previous drill hole
- Section line
- == Road
- El Limon access road
- Feasibility pit shell
- Limon Sur

Geologic Units

- Quaternary sediment
- Skarn
- Breccia
- El Limón granodiorite
- Mezcala Fm. hornfels
- Morelos Fm. marble

El Limon Sur - Mineralized Area on Detailed Geology



Figure 2

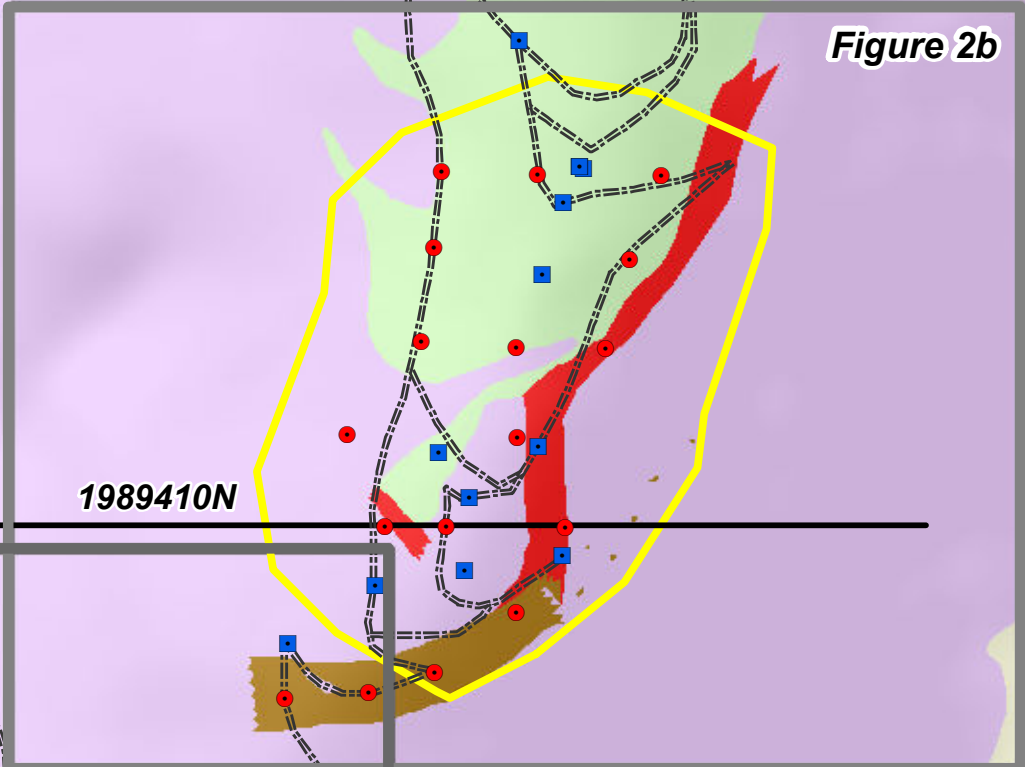
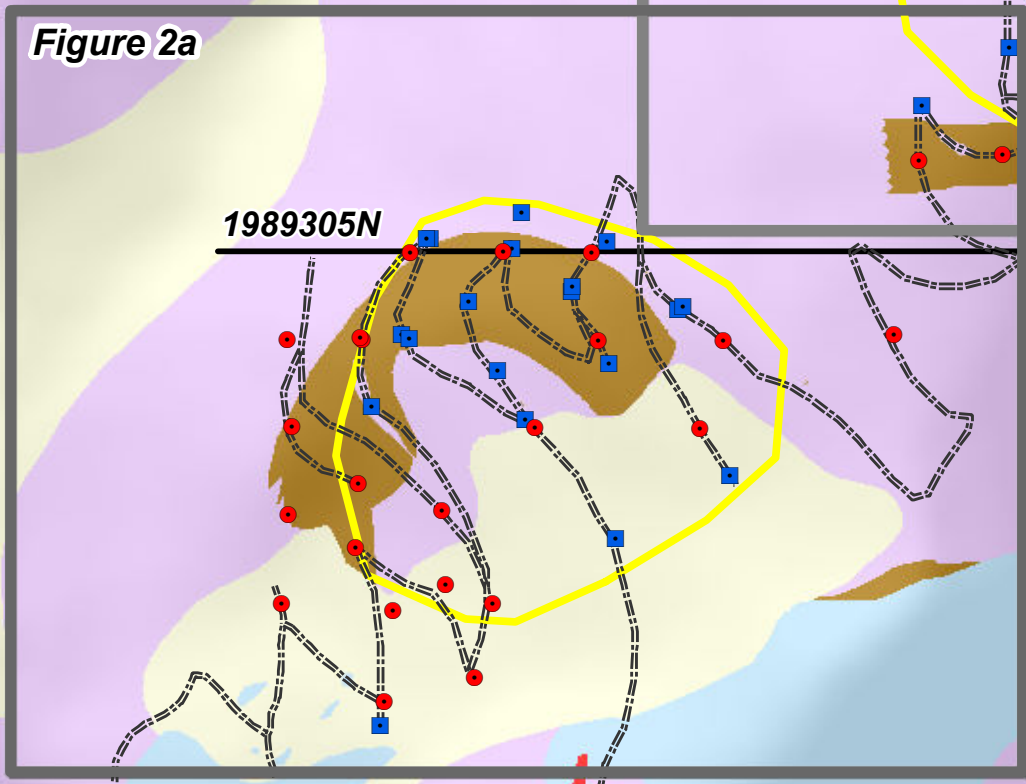


Figure 2a

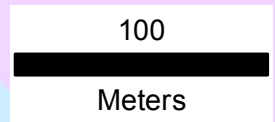


Legend

- Result from this release
- Previous drill hole
- Road
- Section line
- El Limon access road
- ▭ Mineralized zone

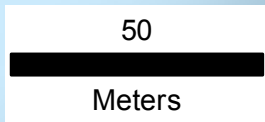
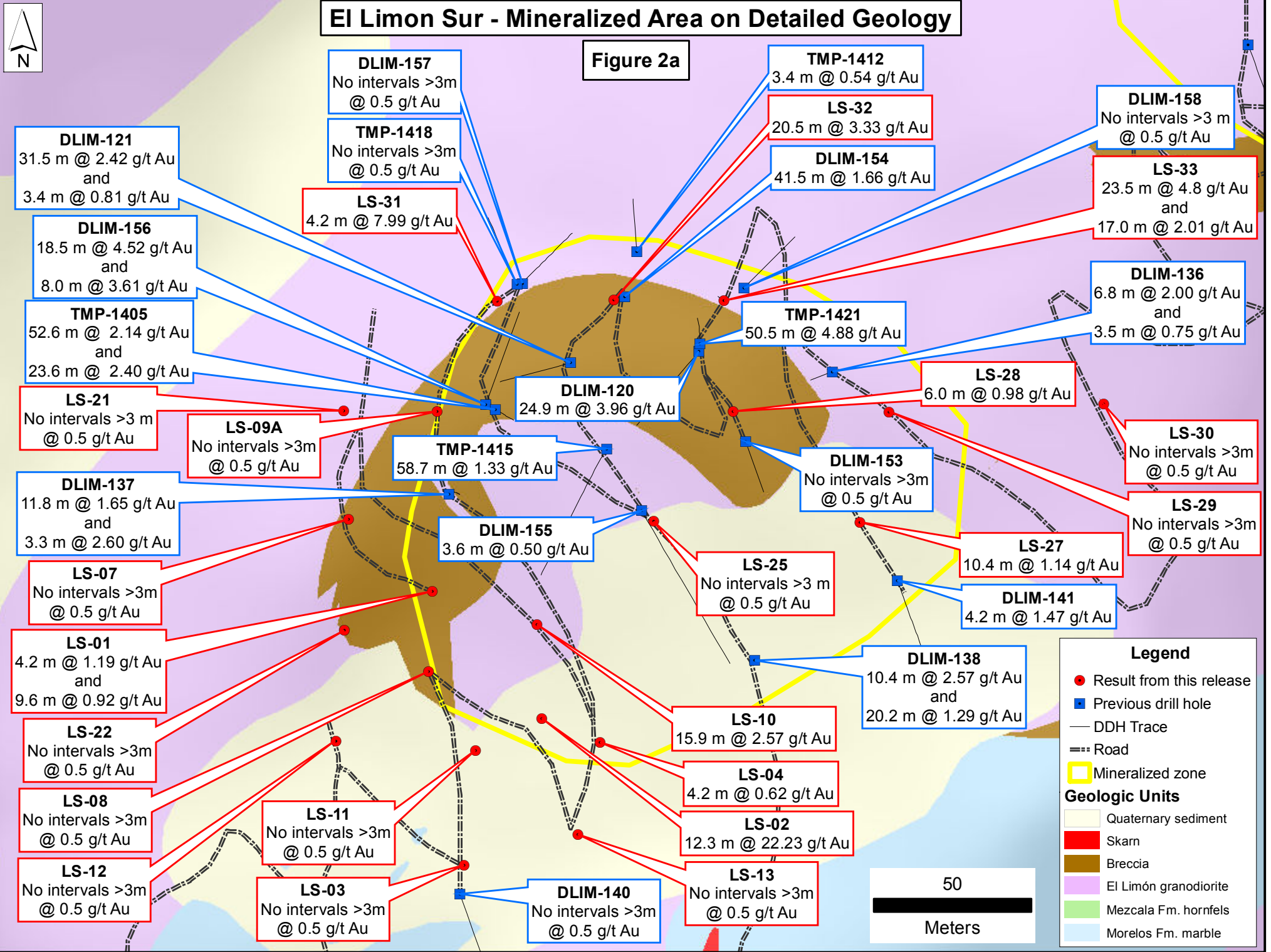
Geologic Units

- Quaternary sediment
- Skarn
- Breccia
- El Limón granodiorite
- Mezcala Fm. hornfels
- Morelos Fm. marble



El Limon Sur - Mineralized Area on Detailed Geology

Figure 2a



Legend

- Result from this release
- Previous drill hole
- DDH Trace
- == Road
- Mineralized zone

Geologic Units

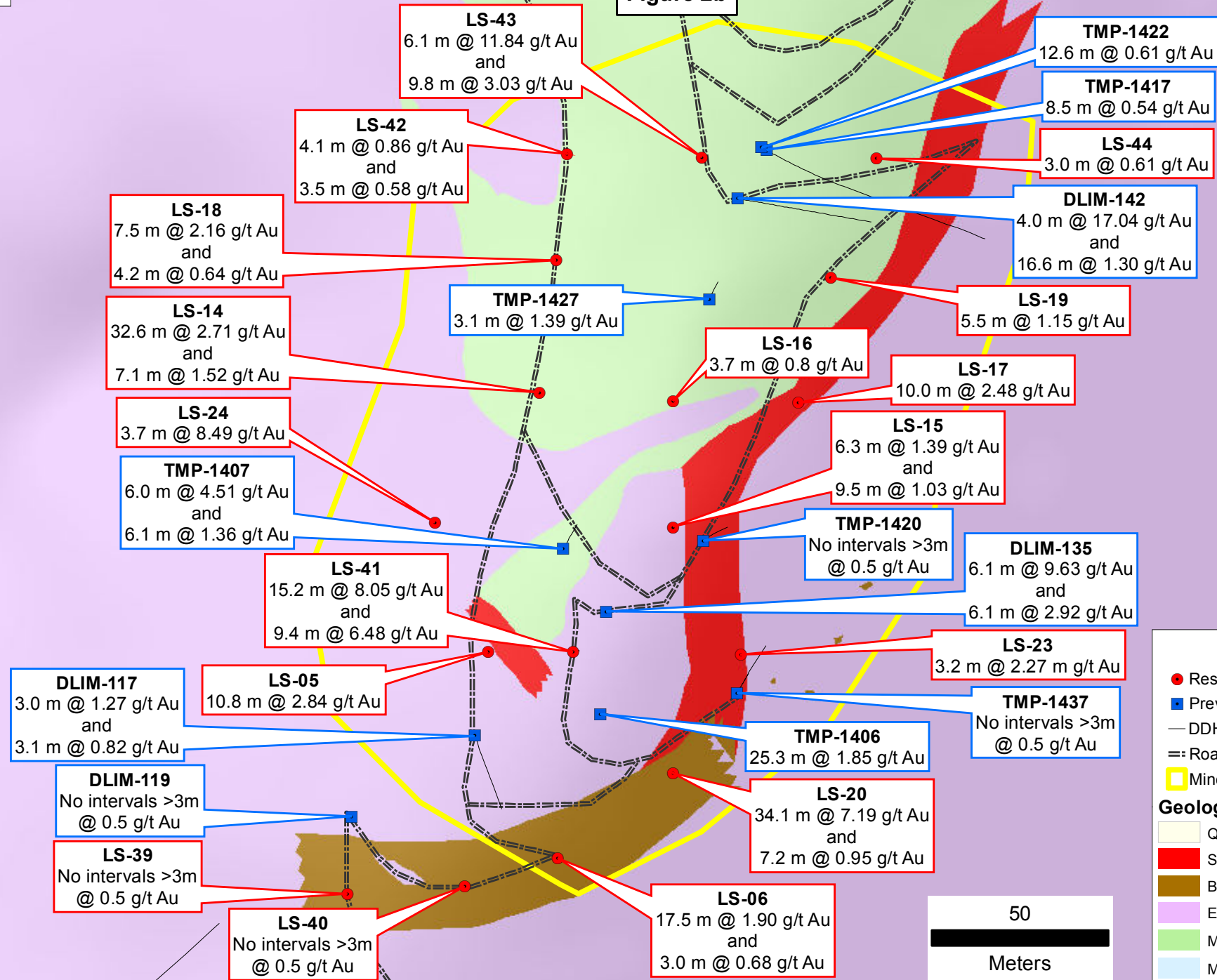
- Quaternary sediment
- Skarn
- Breccia
- El Limón granodiorite
- Mezcala Fm. hornfels
- Morelos Fm. marble

- DLIM-157**
No intervals >3m @ 0.5 g/t Au
- TMP-1418**
No intervals >3m @ 0.5 g/t Au
- LS-31**
4.2 m @ 7.99 g/t Au
- DLIM-121**
31.5 m @ 2.42 g/t Au and 3.4 m @ 0.81 g/t Au
- DLIM-156**
18.5 m @ 4.52 g/t Au and 8.0 m @ 3.61 g/t Au
- TMP-1405**
52.6 m @ 2.14 g/t Au and 23.6 m @ 2.40 g/t Au
- LS-21**
No intervals >3m @ 0.5 g/t Au
- LS-09A**
No intervals >3m @ 0.5 g/t Au
- DLIM-137**
11.8 m @ 1.65 g/t Au and 3.3 m @ 2.60 g/t Au
- LS-07**
No intervals >3m @ 0.5 g/t Au
- LS-01**
4.2 m @ 1.19 g/t Au and 9.6 m @ 0.92 g/t Au
- LS-22**
No intervals >3m @ 0.5 g/t Au
- LS-08**
No intervals >3m @ 0.5 g/t Au
- LS-12**
No intervals >3m @ 0.5 g/t Au
- LS-11**
No intervals >3m @ 0.5 g/t Au
- LS-03**
No intervals >3m @ 0.5 g/t Au
- DLIM-140**
No intervals >3m @ 0.5 g/t Au
- DLIM-155**
3.6 m @ 0.50 g/t Au
- TMP-1415**
58.7 m @ 1.33 g/t Au
- DLIM-120**
24.9 m @ 3.96 g/t Au
- DLIM-153**
No intervals >3m @ 0.5 g/t Au
- LS-25**
No intervals >3m @ 0.5 g/t Au
- DLIM-141**
4.2 m @ 1.47 g/t Au
- DLIM-138**
10.4 m @ 2.57 g/t Au and 20.2 m @ 1.29 g/t Au
- LS-10**
15.9 m @ 2.57 g/t Au
- LS-04**
4.2 m @ 0.62 g/t Au
- LS-02**
12.3 m @ 22.23 g/t Au
- LS-13**
No intervals >3m @ 0.5 g/t Au
- TMP-1412**
3.4 m @ 0.54 g/t Au
- LS-32**
20.5 m @ 3.33 g/t Au
- DLIM-154**
41.5 m @ 1.66 g/t Au
- DLIM-158**
No intervals >3m @ 0.5 g/t Au
- LS-33**
23.5 m @ 4.8 g/t Au and 17.0 m @ 2.01 g/t Au
- DLIM-136**
6.8 m @ 2.00 g/t Au and 3.5 m @ 0.75 g/t Au
- LS-28**
6.0 m @ 0.98 g/t Au
- LS-30**
No intervals >3m @ 0.5 g/t Au
- LS-29**
No intervals >3m @ 0.5 g/t Au
- LS-27**
10.4 m @ 1.14 g/t Au

El Limon Sur - Mineralized Area on Detailed Geology



Figure 2b

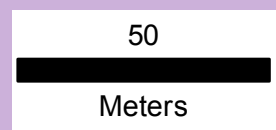


Legend

- Result from this release
- Previous drill hole
- DDH Trace
- == Road
- Mineralized zone

Geologic Units

- Quaternary sediment
- Skarn
- Breccia
- El Limón granodiorite
- Mezcala Fm. hornfels
- Morelos Fm. marble



LS-43
6.1 m @ 11.84 g/t Au
and
9.8 m @ 3.03 g/t Au

TMP-1422
12.6 m @ 0.61 g/t Au

LS-42
4.1 m @ 0.86 g/t Au
and
3.5 m @ 0.58 g/t Au

TMP-1417
8.5 m @ 0.54 g/t Au

LS-44
3.0 m @ 0.61 g/t Au

LS-18
7.5 m @ 2.16 g/t Au
and
4.2 m @ 0.64 g/t Au

DLIM-142
4.0 m @ 17.04 g/t Au
and
16.6 m @ 1.30 g/t Au

LS-14
32.6 m @ 2.71 g/t Au
and
7.1 m @ 1.52 g/t Au

TMP-1427
3.1 m @ 1.39 g/t Au

LS-19
5.5 m @ 1.15 g/t Au

LS-16
3.7 m @ 0.8 g/t Au

LS-17
10.0 m @ 2.48 g/t Au

LS-24
3.7 m @ 8.49 g/t Au

LS-15
6.3 m @ 1.39 g/t Au
and
9.5 m @ 1.03 g/t Au

TMP-1407
6.0 m @ 4.51 g/t Au
and
6.1 m @ 1.36 g/t Au

TMP-1420
No intervals >3m
@ 0.5 g/t Au

DLIM-135
6.1 m @ 9.63 g/t Au
and
6.1 m @ 2.92 g/t Au

LS-41
15.2 m @ 8.05 g/t Au
and
9.4 m @ 6.48 g/t Au

LS-23
3.2 m @ 2.27 g/t Au

DLIM-117
3.0 m @ 1.27 g/t Au
and
3.1 m @ 0.82 g/t Au

LS-05
10.8 m @ 2.84 g/t Au

TMP-1406
25.3 m @ 1.85 g/t Au

TMP-1437
No intervals >3m
@ 0.5 g/t Au

DLIM-119
No intervals >3m
@ 0.5 g/t Au

LS-20
34.1 m @ 7.19 g/t Au
and
7.2 m @ 0.95 g/t Au

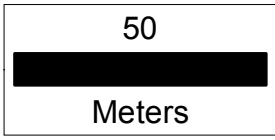
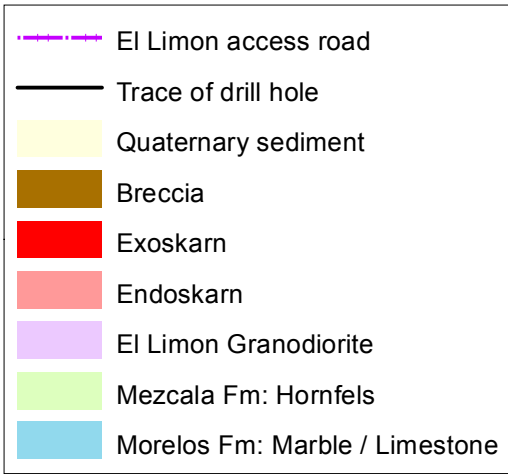
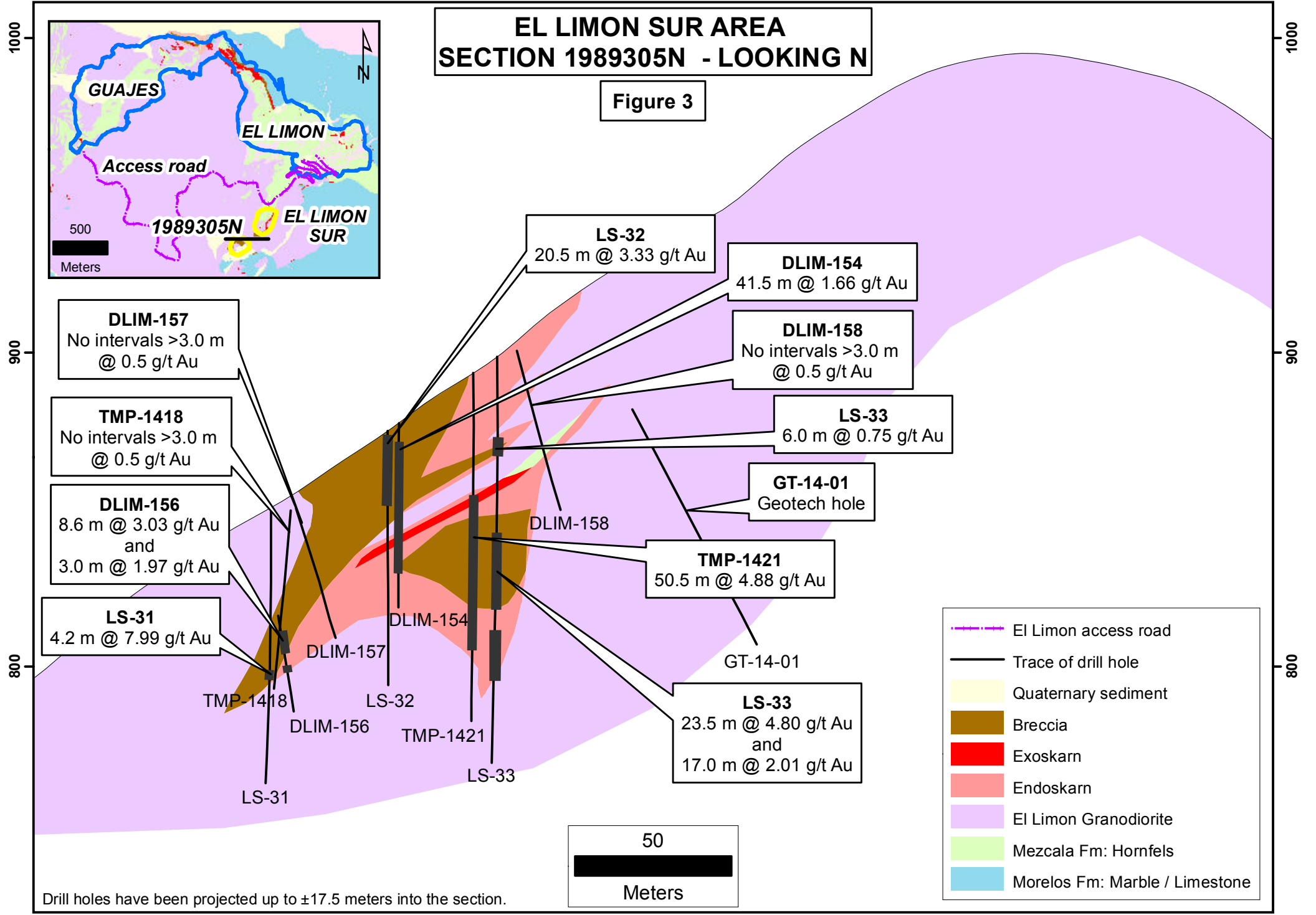
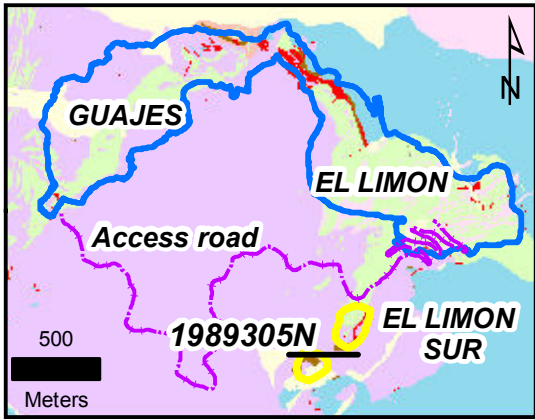
LS-39
No intervals >3m
@ 0.5 g/t Au

LS-40
No intervals >3m
@ 0.5 g/t Au

LS-06
17.5 m @ 1.90 g/t Au
and
3.0 m @ 0.68 g/t Au

EL LIMON SUR AREA SECTION 1989305N - LOOKING N

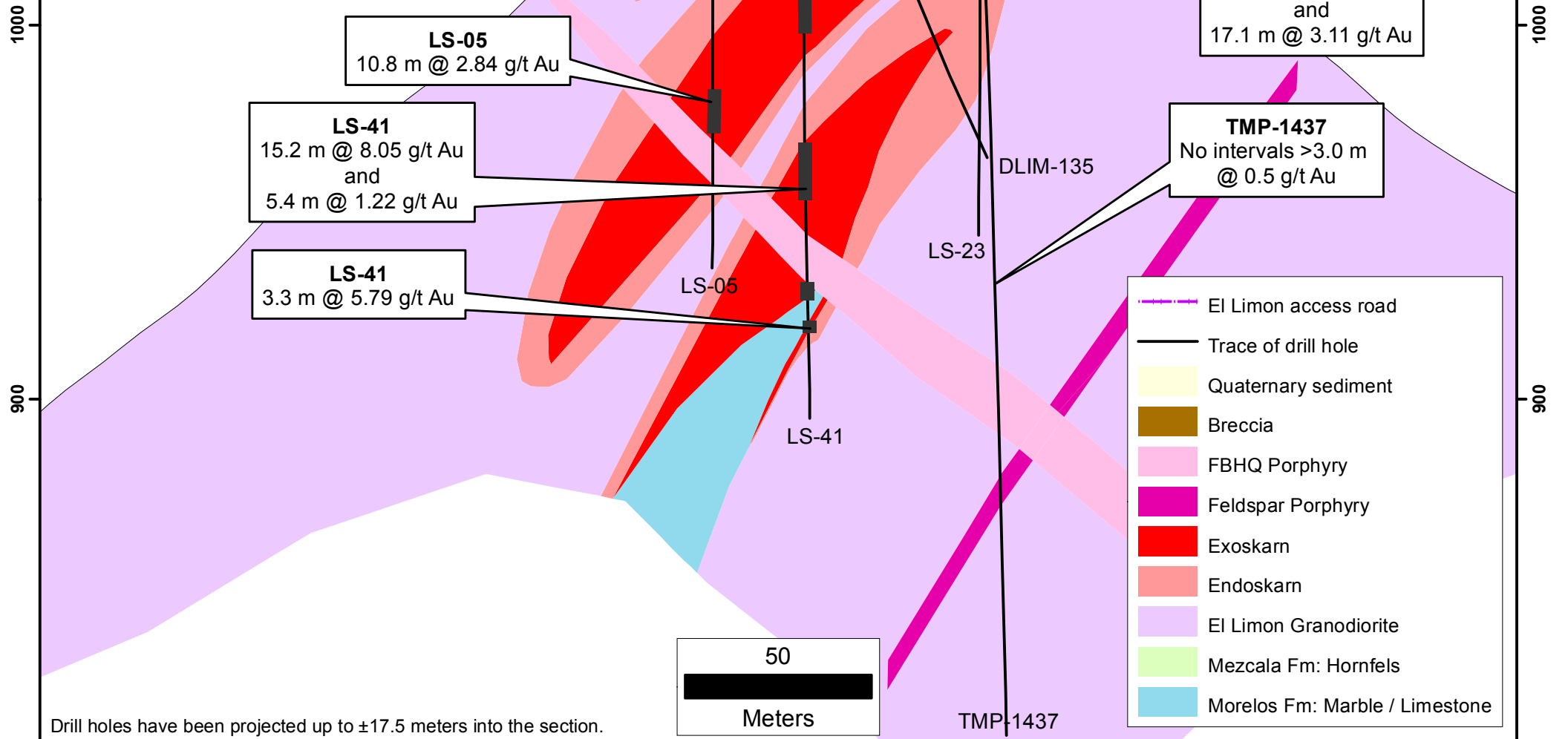
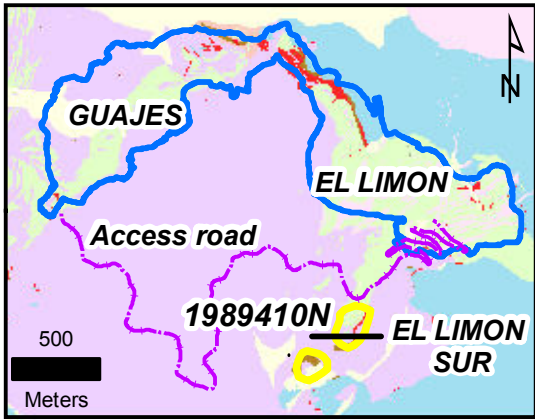
Figure 3



Drill holes have been projected up to ±17.5 meters into the section.

EL LIMON SUR AREA SECTION 1989410N - LOOKING N

Figure 4



LS-23
3.2 m @ 2.27 g/t Au

DLIM-135
6.1 m @ 9.63 g/t Au
and
6.1 m @ 2.92 g/t Au

LS-41
9.4 m @ 6.48 g/t Au
and
17.1 m @ 3.11 g/t Au

LS-05
10.8 m @ 2.84 g/t Au

LS-41
15.2 m @ 8.05 g/t Au
and
5.4 m @ 1.22 g/t Au

LS-41
3.3 m @ 5.79 g/t Au

TMP-1437
No intervals >3.0 m
@ 0.5 g/t Au

- El Limon access road
- Trace of drill hole
- Quaternary sediment
- Breccia
- FBHQ Porphyry
- Feldspar Porphyry
- Exoskarn
- Endoskarn
- El Limon Granodiorite
- Mezcala Fm: Hornfels
- Morelos Fm: Marble / Limestone

50
Meters

Drill holes have been projected up to ±17.5 meters into the section.