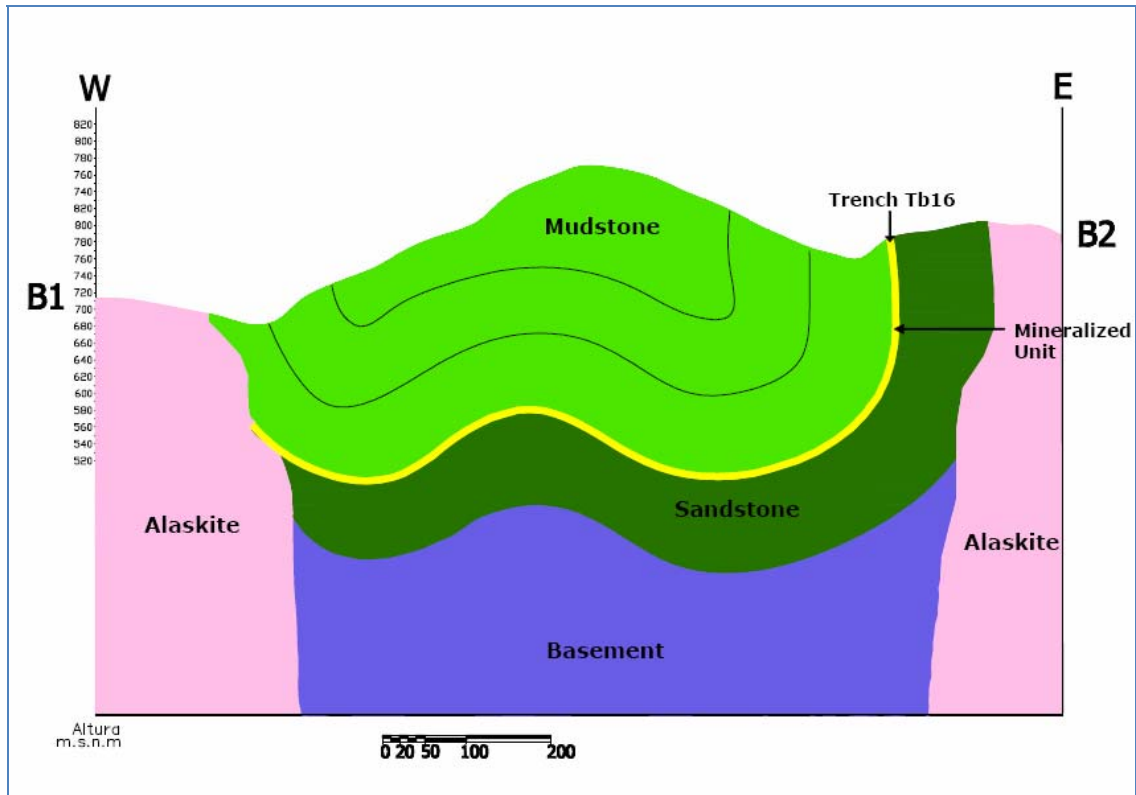


Figure 2 – Cross Section through the Fold in the Berlin Project



This figure illustrates that the alaskitic batholith cuts off the target sandstone at depth in some areas, so that the western side of the fold cannot be trenched at regular intervals. Such areas of the western arm of the fold will be explored by drilling. The location of this vertical section is shown as the line B1-B2 in the northern part of the map shown in Figure 1.