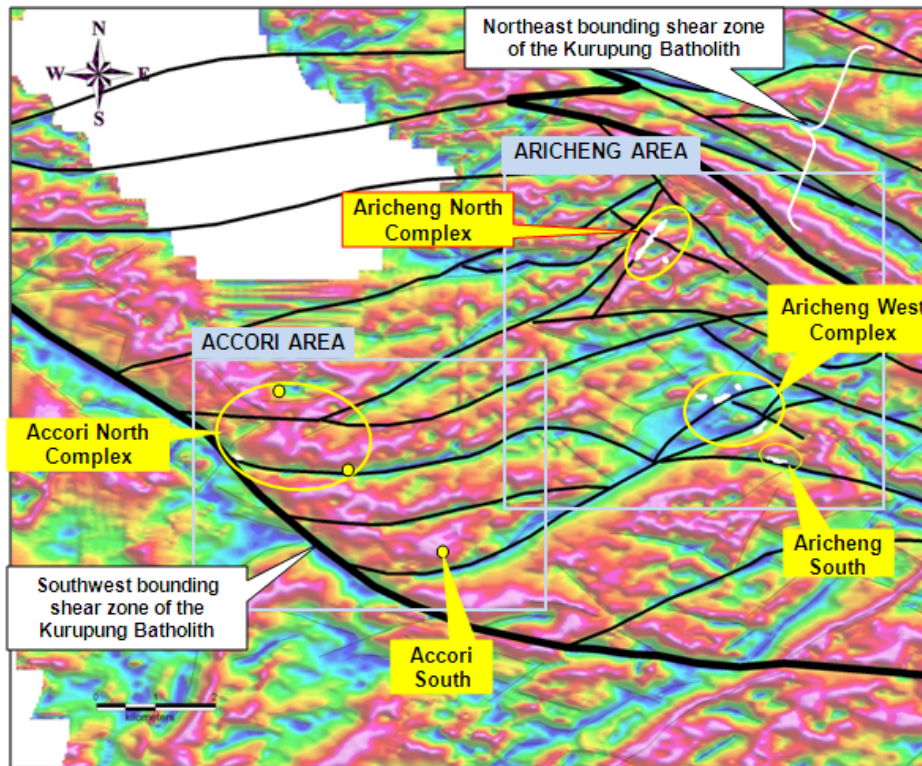


Figure 1 – Clusters of Multiple Uranium-Bearing Structures in the Kurupung Batholith



Map of airborne magnetic data from the Kurupung Batholith overlain with interpreted structures (black lines) that extend between the bounding shear zones of the batholiths (thicker black lines). Cool colours represent rocks with little magnetism while warm colours represent magnetic rocks. Most uranium found by U3O8 Corp. to date lies within demagnetized faults (cool coloured areas with interpreted principal faults marked by black lines).

To date, five areas of related uranium-bearing structures are emerging in the Kurupung Batholith within the broader Aricheng and Accori Areas (marked by blue boxes), aggregated as follows: 1) Aricheng North Complex (labelled in red and whose assay results on the extensions of the main Aricheng North structure are reported in this press release); 2) Aricheng West Complex; 3) Aricheng South; 4) Accori North; and 5) Accori South. White irregular areas (footprint of uranium mineralization) and yellow dots mark location of uranium-bearing structures drilled by U3O8 Corp. within these five areas.