

Figure 1: Candelones zones with IP Chargeability, Neita Concession, Dominican Republic

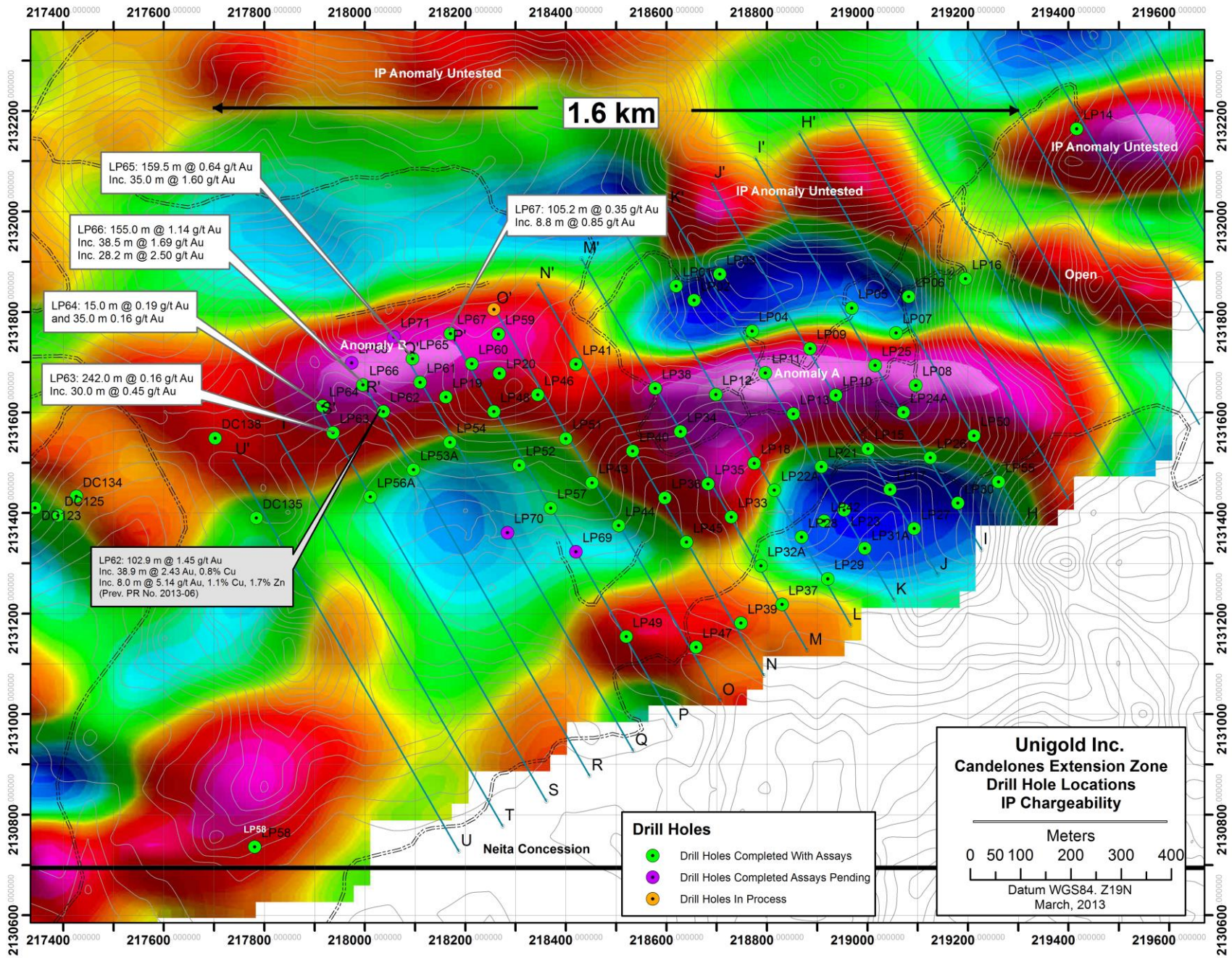


Figure 2: Candelones Extension area with IP Chargeability, Neita Concession, Dominican Republic

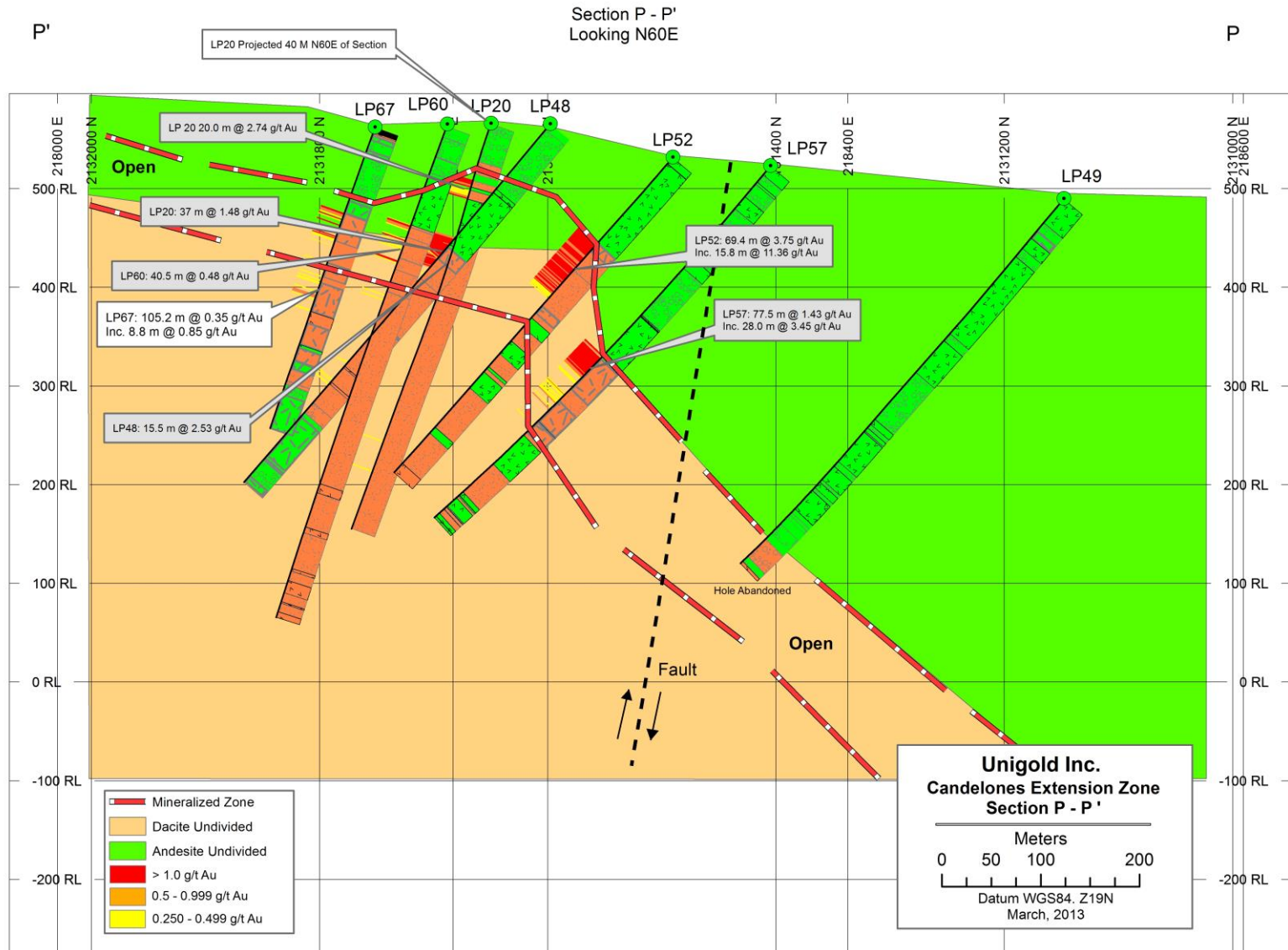


Figure 3: Section P'-P

R'

Section R - R'
Looking N60E

R

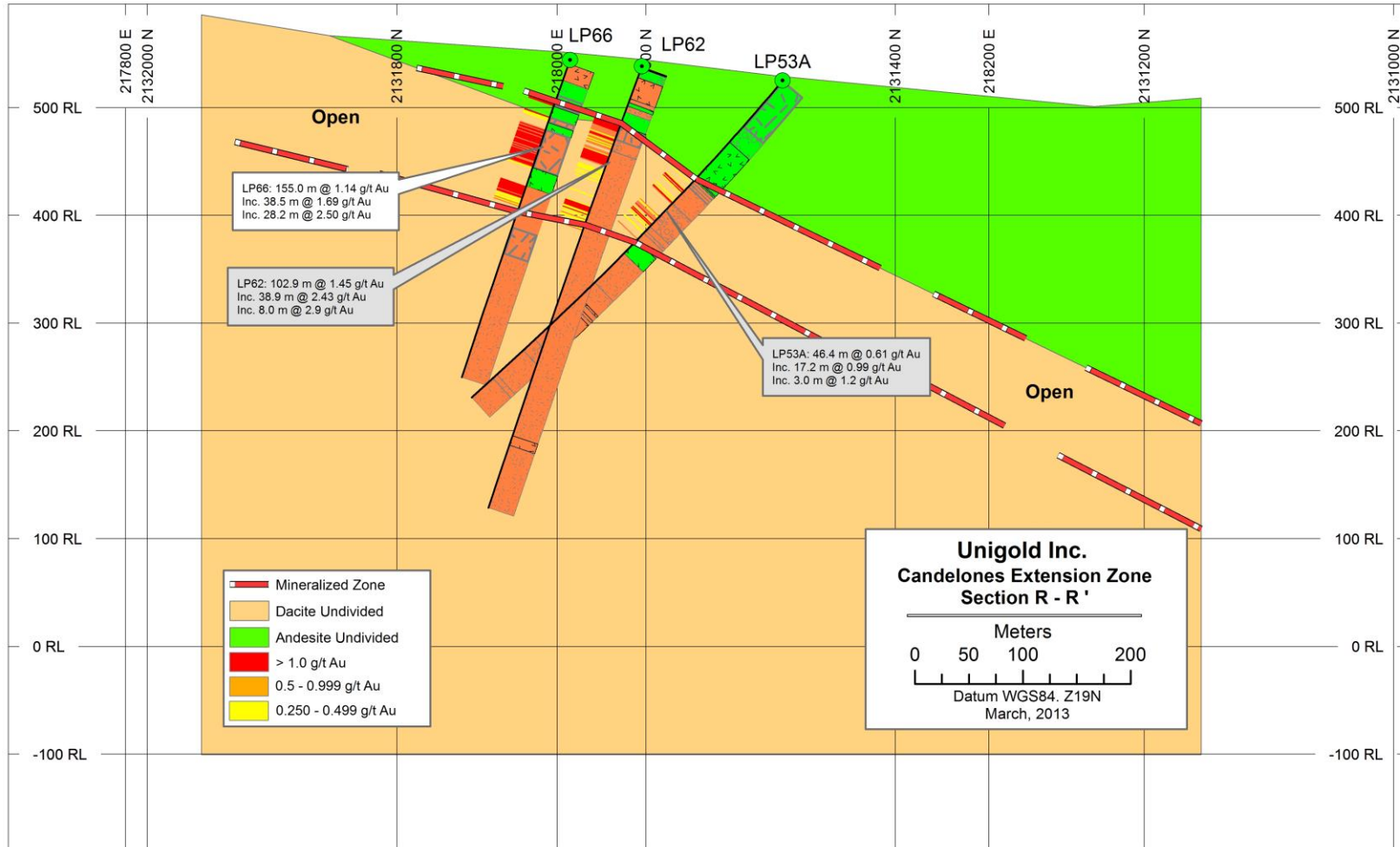


Figure 4: Section R'-R

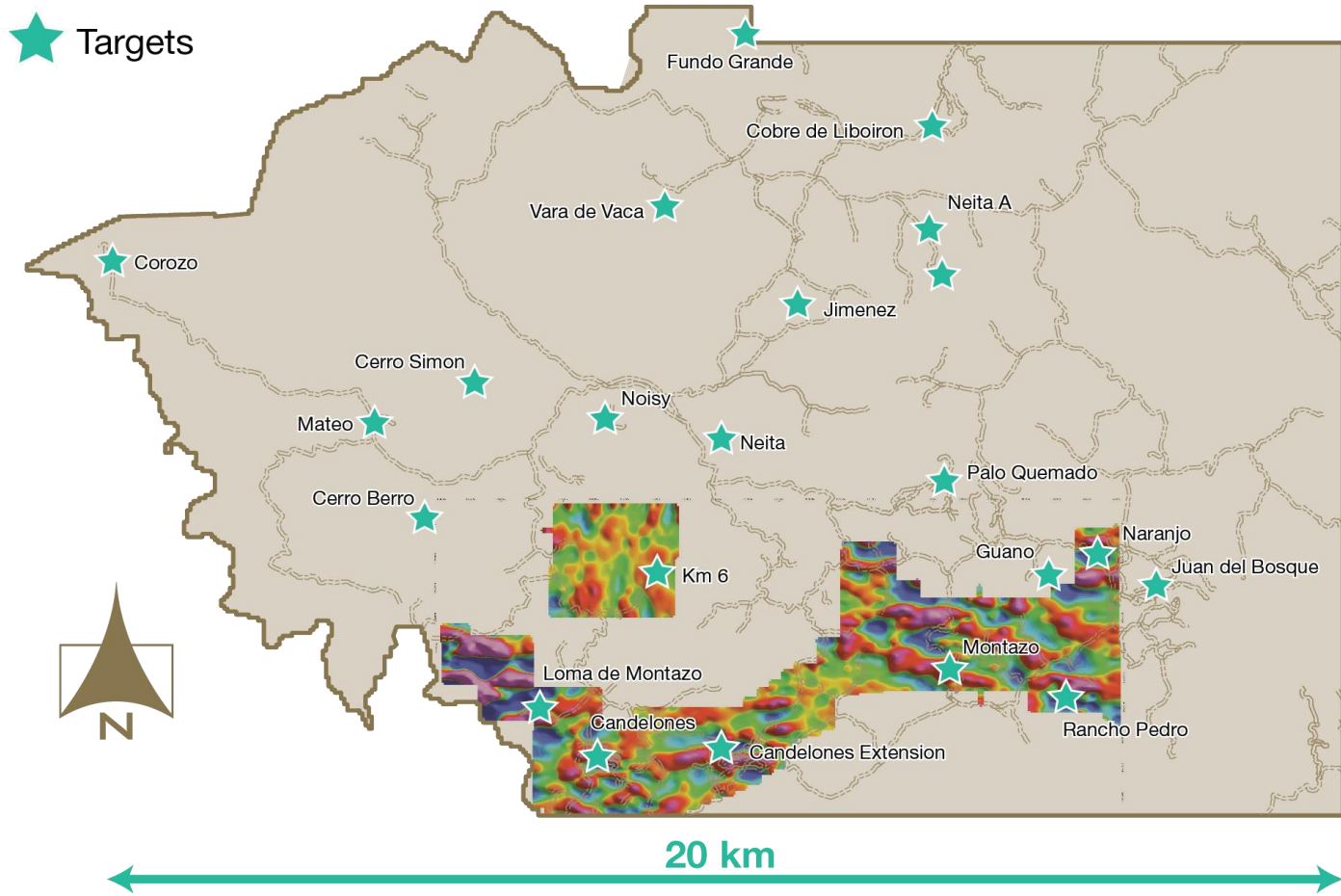


Figure 5: Neita Property, Regional IP Chargeability and targets.