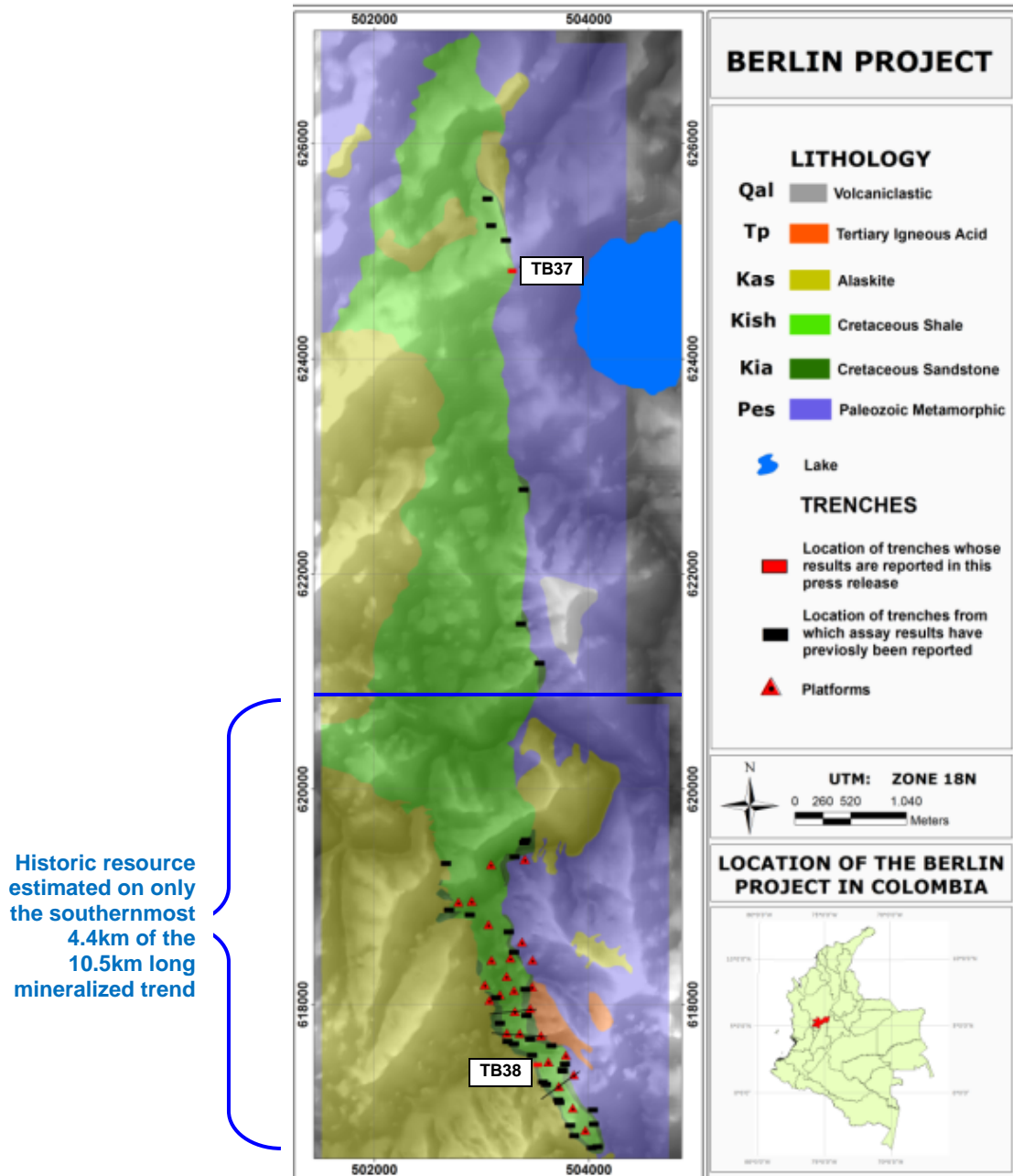


Figure 1 – Map Shows the Location of the Trenches and Drill Platforms in the Berlin Project



Geological map of the Berlin Project draped on an image of topography (pale areas are ridges and peaks and dark areas are valley bottoms). The Cretaceous strata (green shades) form a 10.5km long, canoe-shaped fold (syncline). The brown coloured areas show the large extent of the alaskite batholith on the west, and the location of smaller alaskite batholiths on the east flank of the syncline at Berlin. The alaskite is believed to have played a key role in the mineralization of the sedimentary units at Berlin. The location of trenches excavated by U3O8 Corp. is marked by rectangles. Black rectangles mark the site of trenches from which previously reported assay results and red rectangles mark the location of the trenches from which results are reported in this press release. The platforms from which bore holes were drilled are shown as triangles and the location of the three sections referred to in this press release are shown as black lines on the map.