



- Legend**
- Drilling
Type/Status
- Executed
 - ⊗ Programmed
 - Hole Projection



Rio Novo
GOLD INC

1:5,000

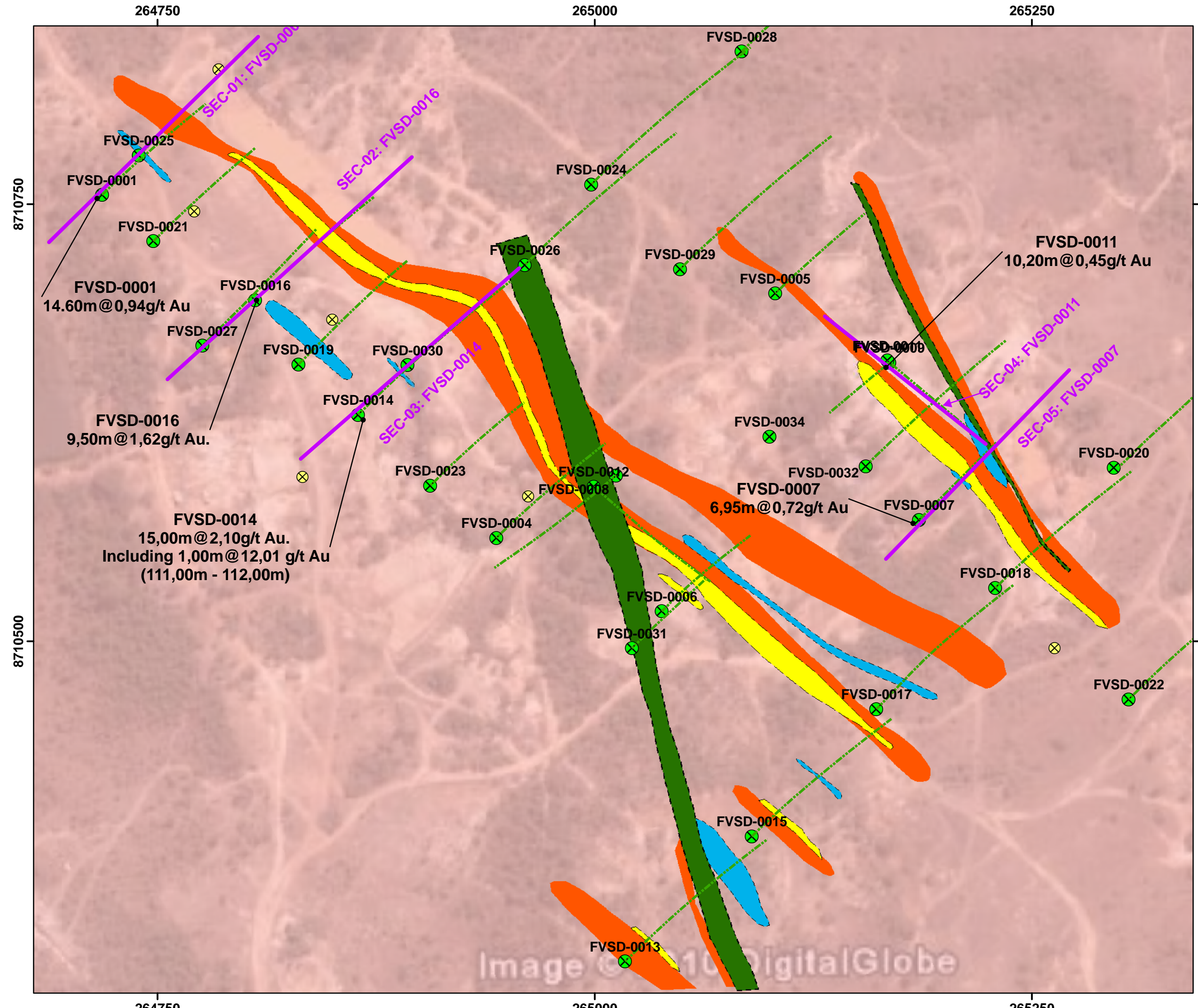
0 100 200 m



ALMAS PROJECT
ALMAS
TOCANTINS STATE

DRILLING AND
GOOGLE EARTH MAP
VIRA SAIA TARGET

SAD69 - UTM 23S
SOURCE: RIO NOVO GOLD, ANEEL,
IBGE, ANA, CPRM
DATE: 2011/08/08



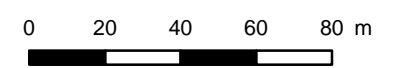
Legend

Drilling
 Type/Status
 Executed (Green X)
 Programmed (Yellow X)
 Hole Projection (Dashed Green Line)

Lithology (Rio Novo)
 Metavulcanic Rock (Dark Green)
 Pegmatite (Blue)
 Quartz Sericite Schist - QSX (Yellow)
 Granodiorite Mylonitized (Orange)
 Granodiorite (Pink)



1:2,000

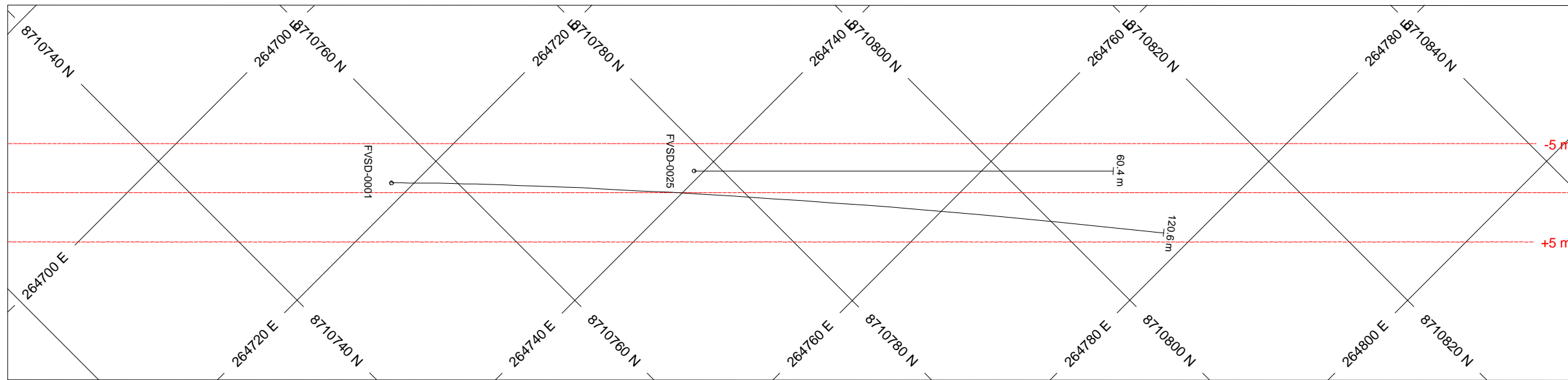


ALMAS PROJECT
ALMAS
TOCANTINS STATE

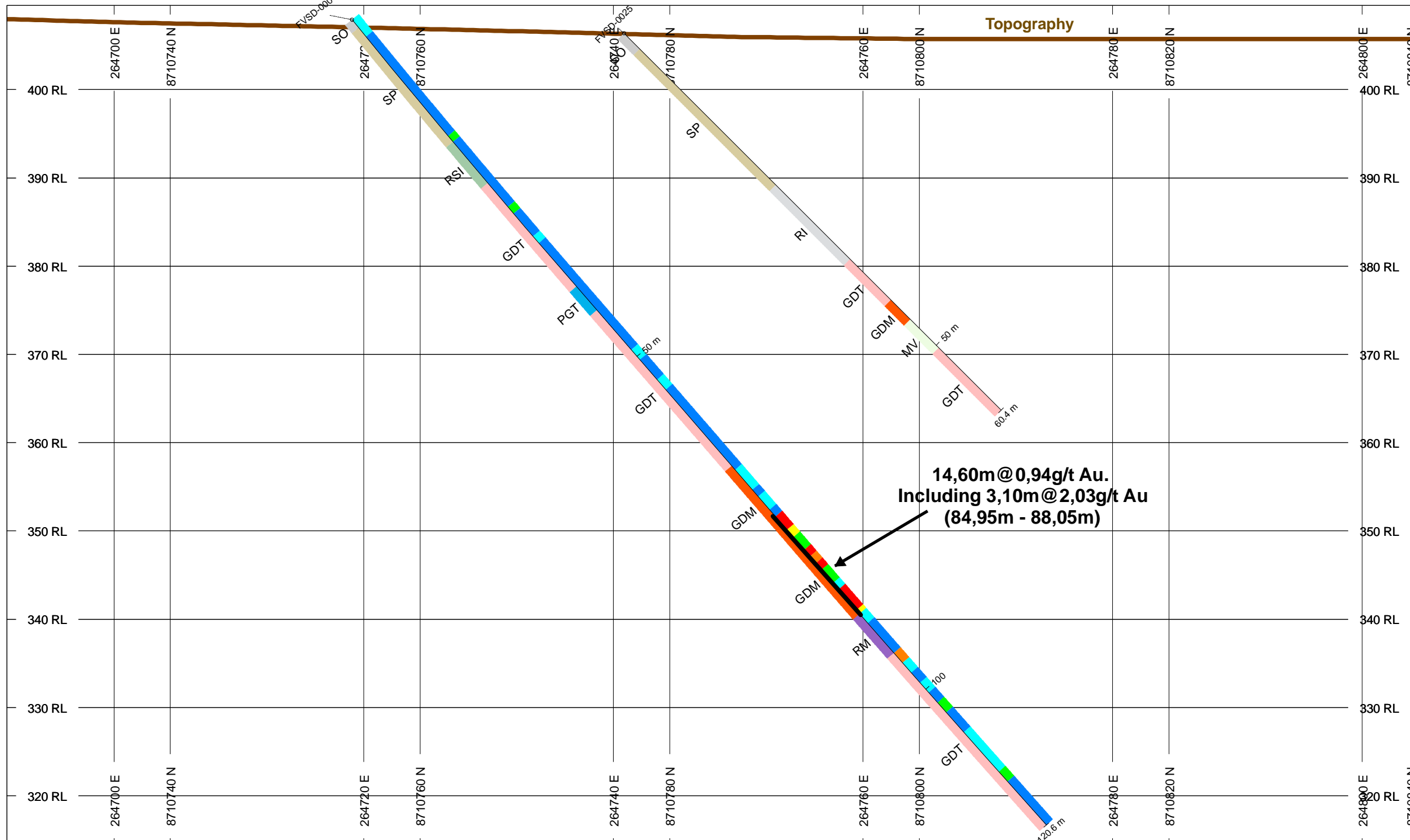
DRILLING AND
 GEOLOGICAL MAP
 VIRA SAIA TARGET

SAD69 - UTM 23S
 SOURCE: RIO NOVO GOLD, ANEEL,
 IBGE, ANA, CPRM
 DATE: 2011/08/08

Image © 2010 DigitalGlobe



HOLES PLOTTED
 TOTAL 2
 FVSD-0001 FVSD-0025
SECTION-01 FVSD-0001
VIRA SAIA TARGET
ALMAS PROJECT



TOPOGRAPHY
 Topography

NUMBER BANDS L/R COL RANGE
 AU_PPM R

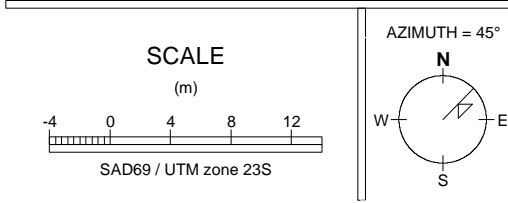
3	Red
1	Orange
0.5	Yellow
0.3	Light Green
0.05	Green
0.005	Cyan
0	Blue

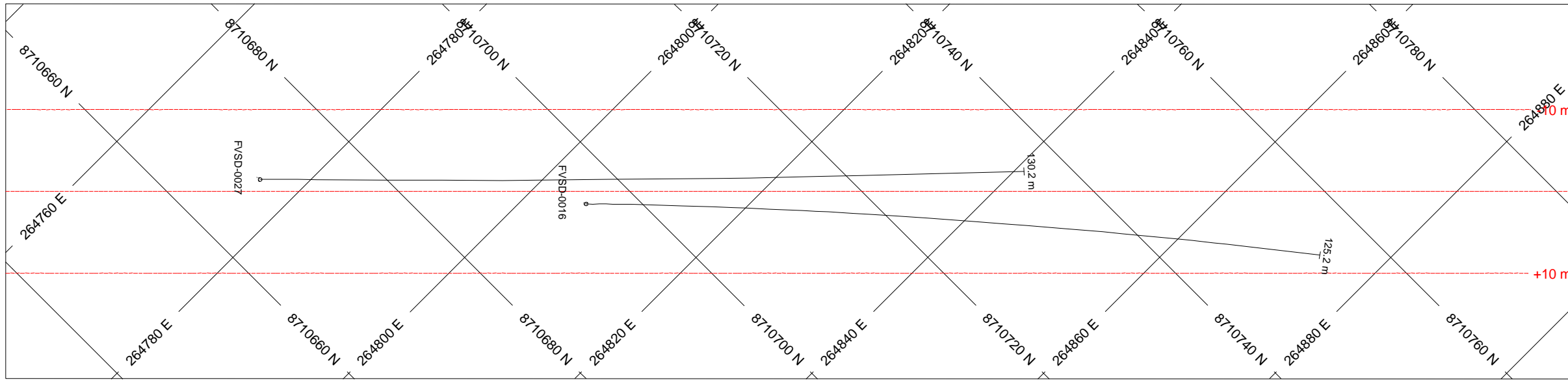
ROCK CODES PAT LABEL DESCRIPTION
 Rock_Code

SO	Soil
SP	Saprolite
RI	Weathered Rock
MV	Meta-Volcanic
RSI	Semi Weathered Rock
GDM	Mylonite Granodiorite
RM	Mafic Rock
GDT	Granodiorite
PGT	Pegmatite Quartz Feldspar

POSTED TEXT L/R TEXT ITEMS
 AU_PPM_Labels R ----- All
 Rock_Code L ----- All

SECTION SPECS:
 REF. PT. E, N 264748 m 8710784 m
 EXTENTS 160.1 m 95.36 m
 SECTION TOP, BOT 409.5 m 314.2 m
 TOLERANCE +/- 5 m

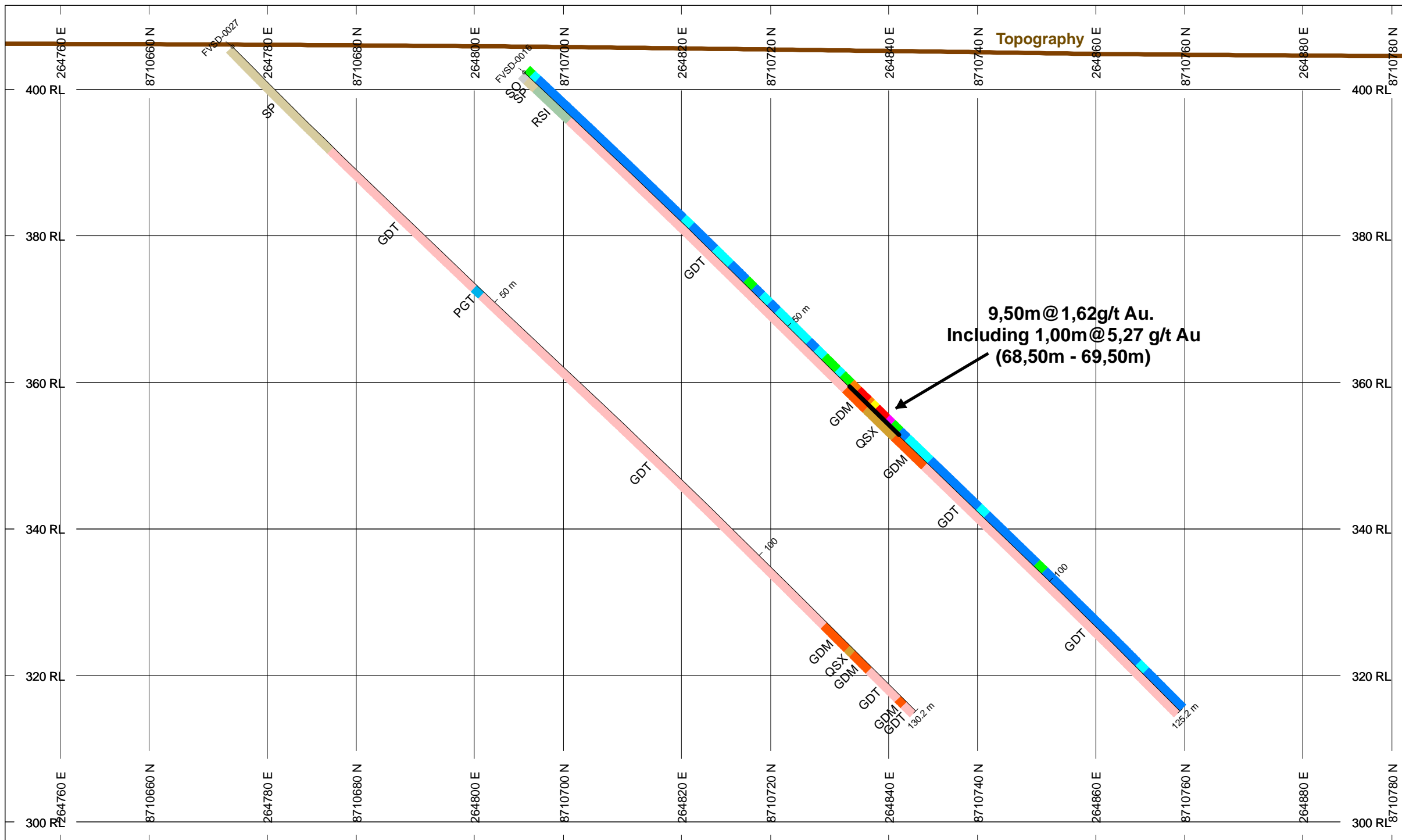




HOLES PLOTTED

TOTAL 2
FVSD-0016 FVSD-0027

**SECTION-02 FVSD-0016
VIRA SAIA TARGET
ALMAS PROJECT**



TOPOGRAPHY

Topography

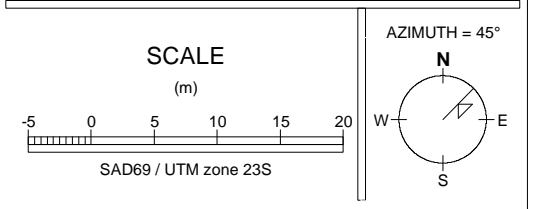
NUMBER BANDS	L/R	COL	RANGE
AU_PPM	R		
			3
			1
			0.5
			0.3
			0.05
			0.005
			0

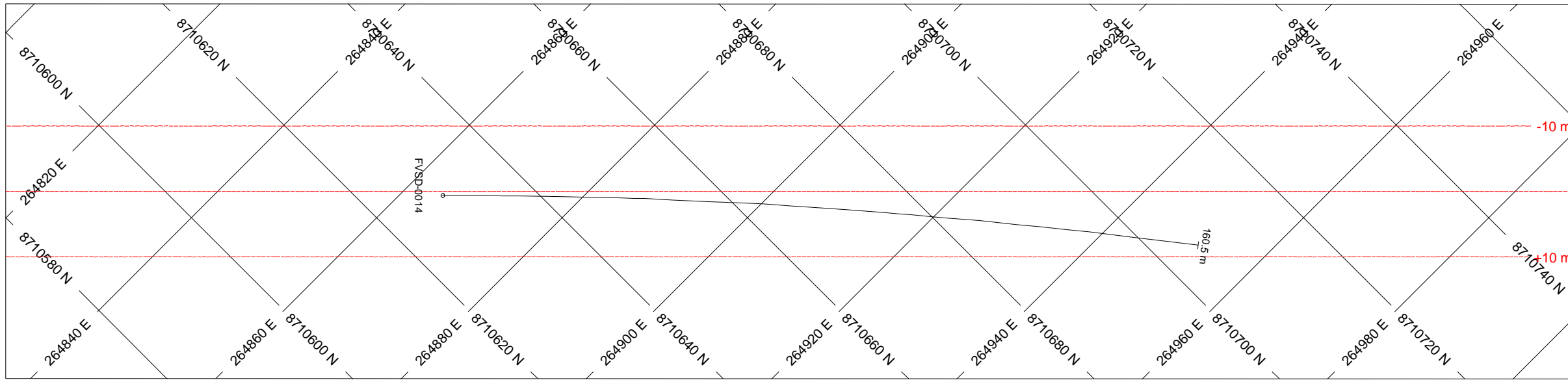
ROCK CODES	PAT	LABEL	DESCRIPTION
Rock_Code		SO	Soil
		SP	Saprolite
		QSX	Quartz-Sericite Schist
		RSI	Semi Weathered Rock
		GDM	Milonite Granodiorite
		GDT	Granodiorite
		PGT	Pegmatite Quartz Feldspar

POSTED TEXT	L/R	TEXT	ITEMS
AU_PPM_Labels	R	-----	All
Rock_Code	L	-----	All

SECTION SPECS:

REF. PT. E, N	264823 m	8710714 m
EXTENTS	192.1 m	114.4 m
SECTION TOP, BOT	411.4 m	297 m
TOLERANCE +/-	10 m	



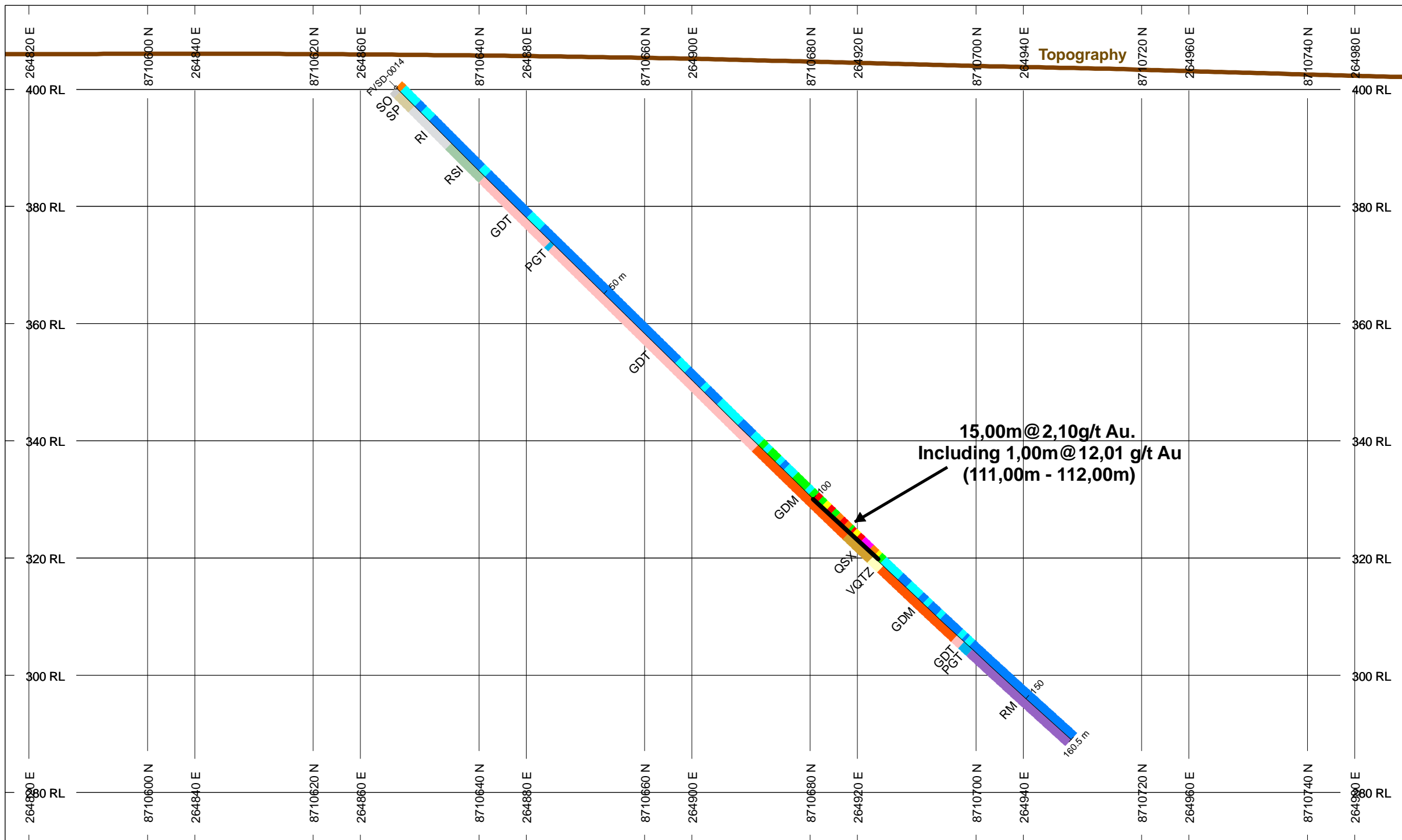


HOLES PLOTTED

TOTAL 1

FVSD-0014

**SECTION-03 FVSD-0014
VIRA SAIA TARGET
ALMAS PROJECT**



TOPOGRAPHY

Topography

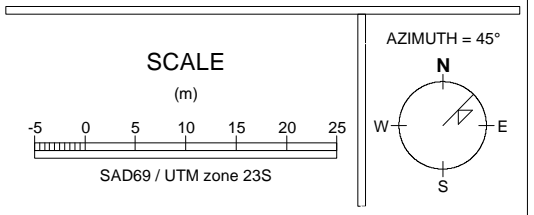
NUMBER BANDS	L/R	COL	RANGE
AU_PPM	R		
			3
			1
			0.5
			0.3
			0.05
			0.005
			0

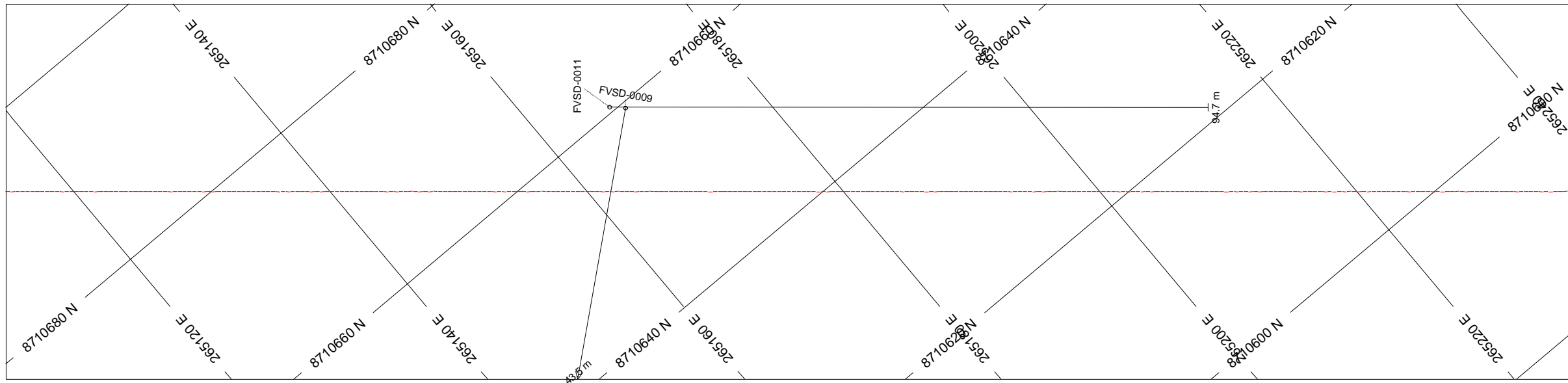
ROCK CODES	PAT	LABEL	DESCRIPTION
Rock_Code			
		SO	Soil
		SP	Saprolite
		RI	Weathered Rock
		VQTZ	Quartz Vein
		QSX	Quartz-Sericite Schist
		RSI	Semi Weathered Rock
		GDM	Milonite Granodiorite
		RM	Mafic Rock
		GDT	Granodiorite
		PGT	Pegmatite Quartz Feldspar

POSTED TEXT	L/R	TEXT	ITEMS
AU_PPM_Labels	R	-----	All
Rock_Code	L	-----	All

SECTION SPECS:

REF. PT. E, N	264902 m	8710668 m
EXTENTS	240.1 m	143 m
SECTION TOP, BOT	414.3 m	271.3 m
TOLERANCE +/-	10 m	



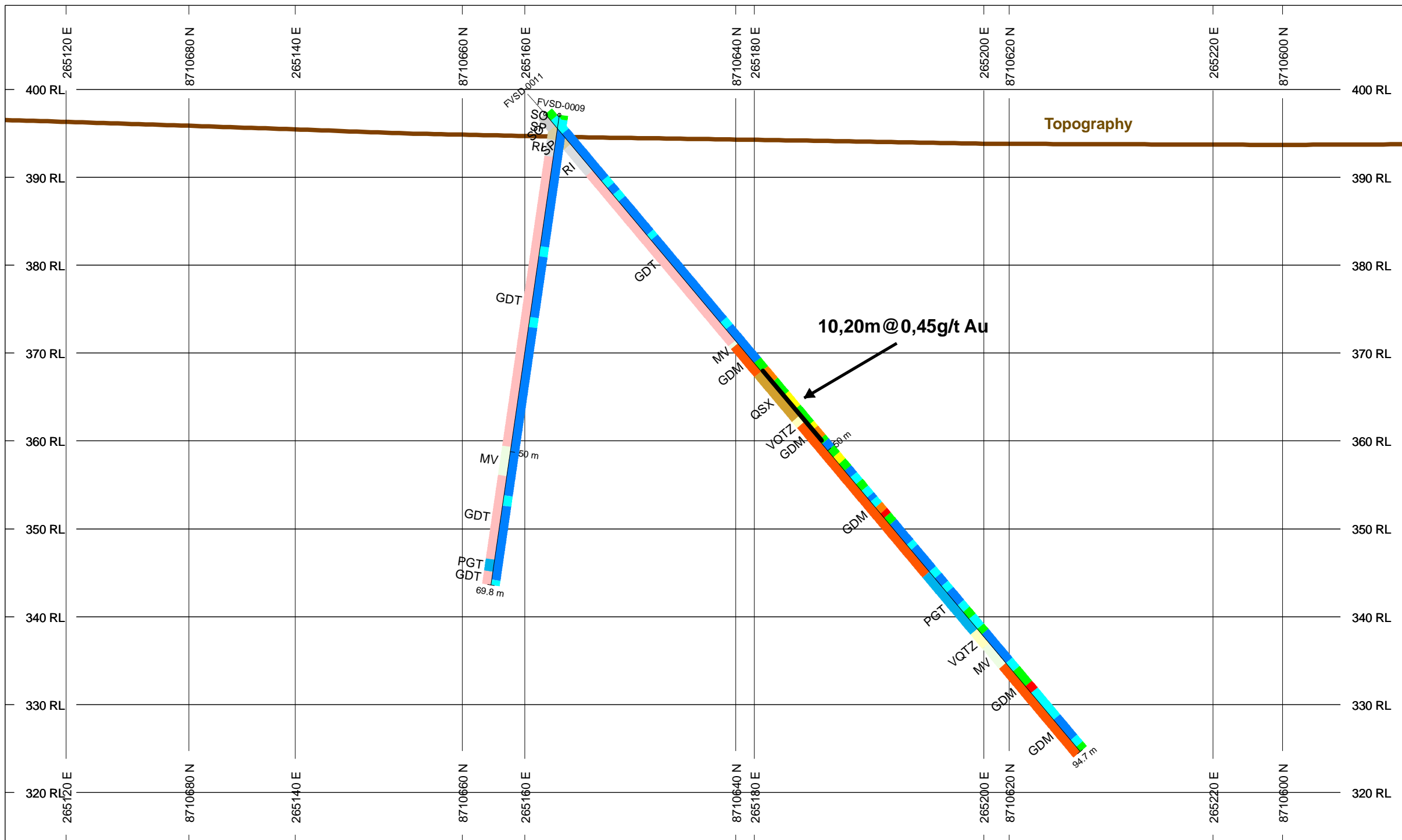


HOLES PLOTTED

TOTAL 2

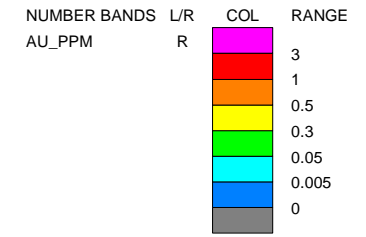
FVSD-0009 FVSD-0011

**SECTION-04 FVSD-0011
VIRA SAIA TARGET
ALMAS PROJECT**



TOPOGRAPHY

Topography

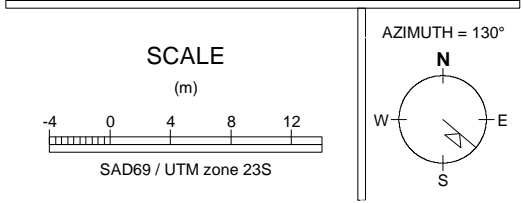


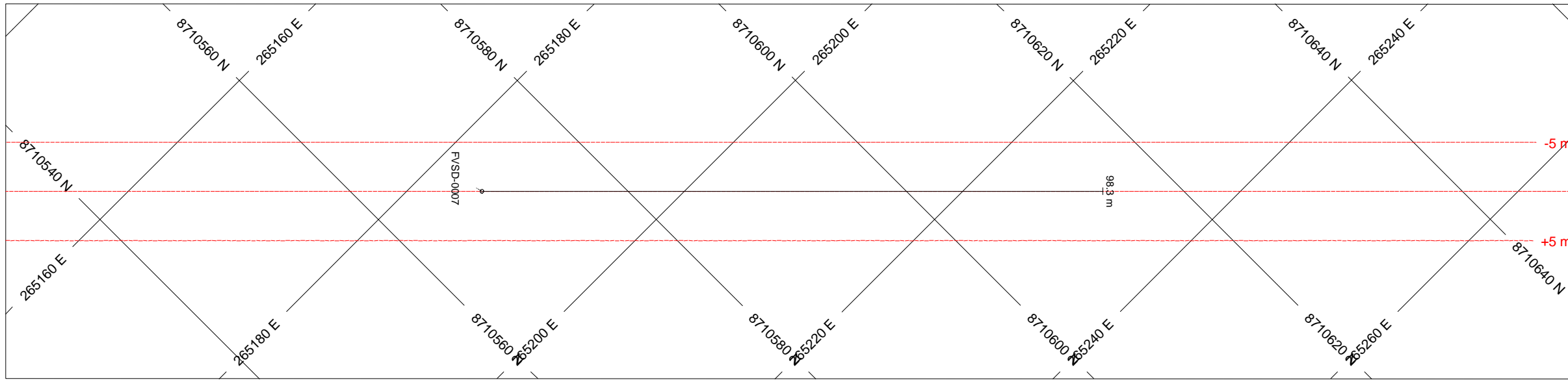
ROCK CODES	PAT	LABEL	DESCRIPTION
Rock_Code	[Pattern]	SO	Soil
	[Pattern]	SP	Saprolite
	[Pattern]	RI	Weathered Rock
	[Pattern]	VQTZ	Quartz Vein
	[Pattern]	QSX	Quartz-Sericite Schist
	[Pattern]	MV	Meta-Volcanic
	[Pattern]	GDM	Milonite Granodiorite
	[Pattern]	GDT	Granodiorite
	[Pattern]	PGT	Pegmatite Quartz Feldspar

POSTED TEXT	L/R	TEXT	ITEMS
AU_PPM_Labels	R	-----	All
Rock_Code	L	-----	All

SECTION SPECS:

REF. PT. E, N	265176 m	8710642 m
EXTENTS	160.1 m	95.36 m
SECTION TOP, BOT	409.5 m	314.2 m
TOLERANCE +/-	40 m	



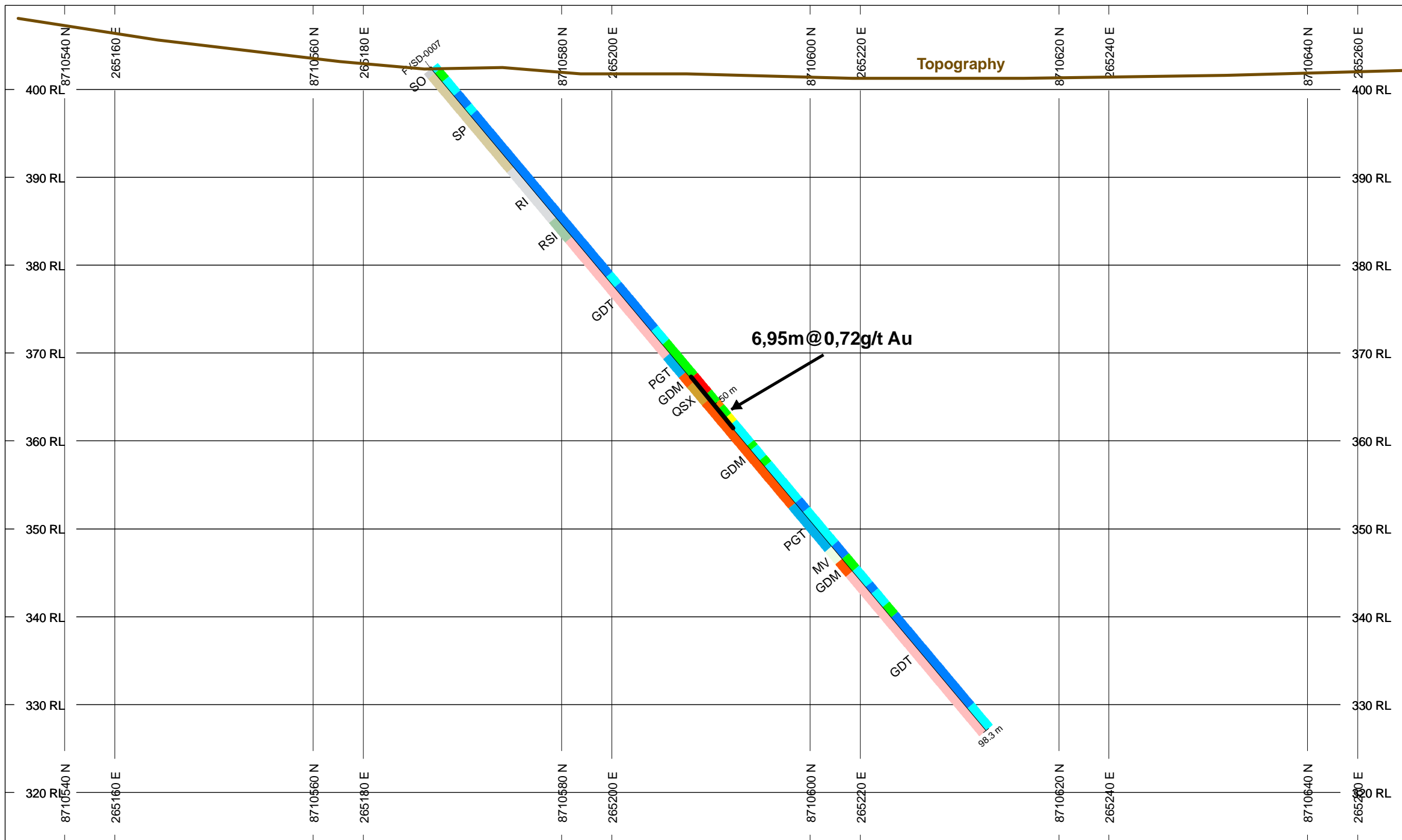


HOLES PLOTTED

TOTAL 1

FVSD-0007

**SECTION-05 FVSD-0007
VIRA SAIA TARGET
ALMAS PROJECT**



TOPOGRAPHY

Topography

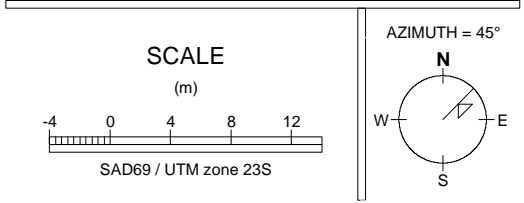
NUMBER BANDS	L/R	COL	RANGE
AU_PPM	R		
			3
			1
			0.5
			0.3
			0.05
			0.005
			0

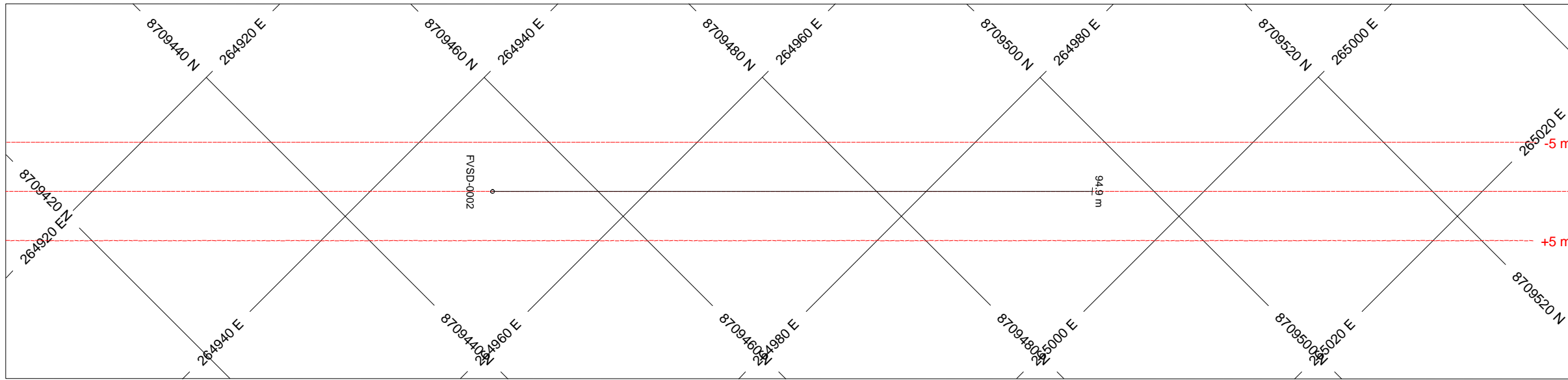
ROCK CODES	PAT	LABEL	DESCRIPTION
Rock_Code			
	SO	Soil	Soil
	SP	Saprolite	Saprolite
	RI	Weathered Rock	Weathered Rock
	QSX	Quartz-Sericite Schist	Quartz-Sericite Schist
	MV	Meta-Volcanic	Meta-Volcanic
	RSI	Semi Weathered Rock	Semi Weathered Rock
	GDM	Milonite Granodiorite	Milonite Granodiorite
	GDT	Granodiorite	Granodiorite
	PGT	Pegmatite Quartz Feldspar	Pegmatite Quartz Feldspar

POSTED TEXT	L/R	TEXT	ITEMS
AU_PPM_Labels	R	-----	All
Rock_Code	L	-----	All

SECTION SPECS:

REF. PT. E, N	265208 m	8710592 m
EXTENTS	160.1 m	95.36 m
SECTION TOP, BOT	409.5 m	314.2 m
TOLERANCE +/-	5 m	



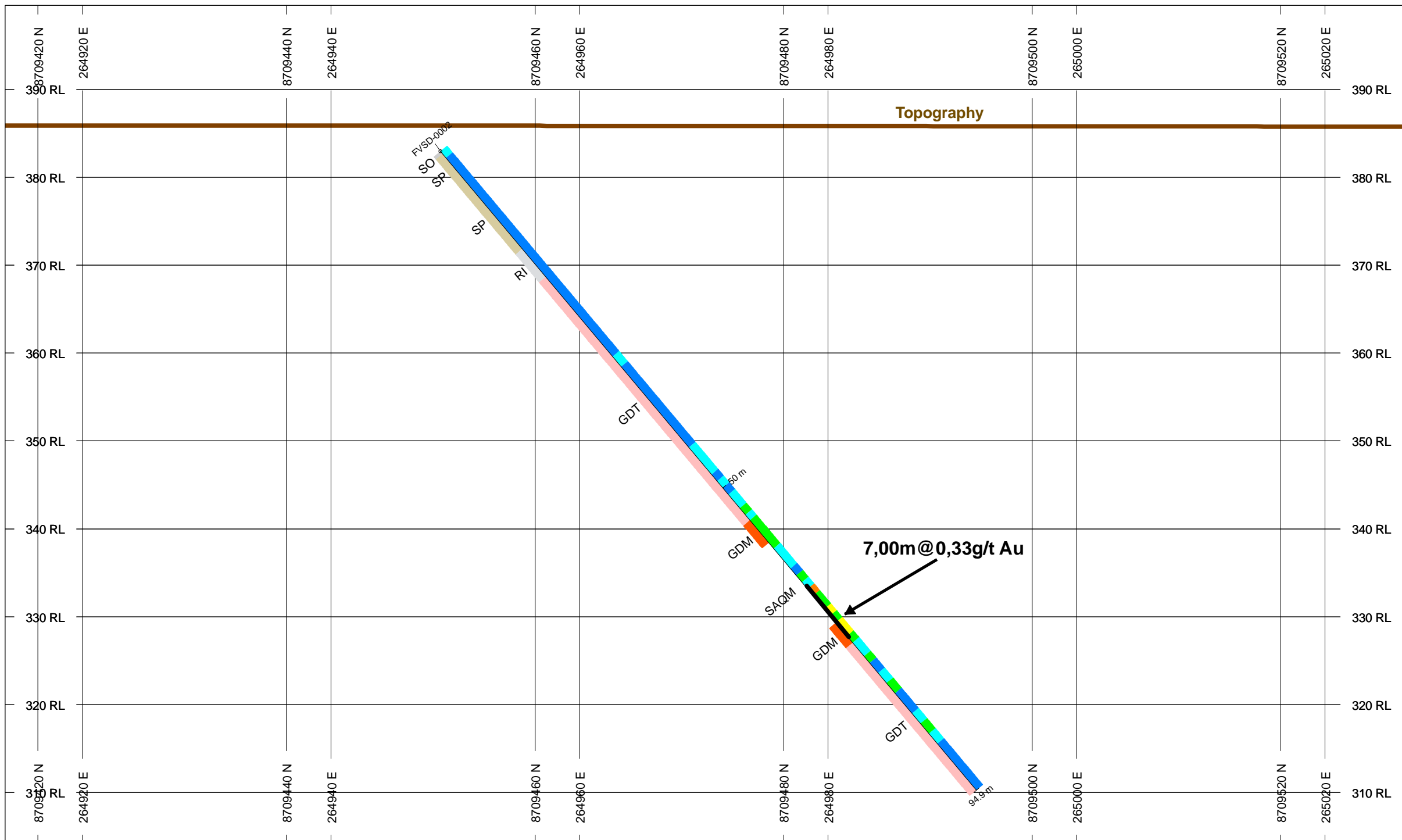


HOLES PLOTTED

TOTAL 1

FVSD-0002

**SECTION-06 FVSD-0002
VIRA SAIA TARGET
ALMAS PROJECT**



TOPOGRAPHY

Topography

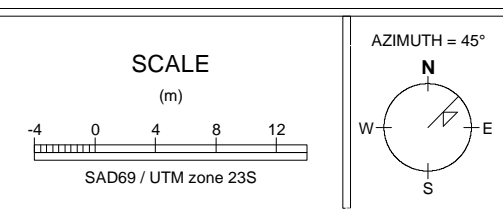
NUMBER BANDS	L/R	COL	RANGE
AU_PPM	R		
			3
			1
			0.5
			0.3
			0.05
			0.005
			0

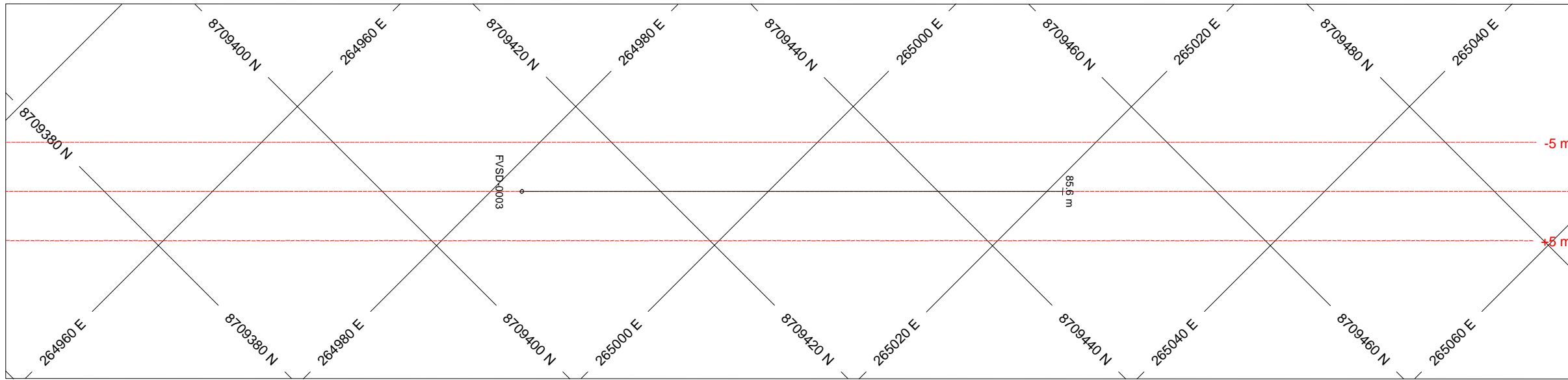
ROCK CODES	PAT	LABEL	DESCRIPTION
Rock_Code		SO	Soil
		SP	Saprolite
		RI	Weathered Rock
		GDM	Milonite Granodiorite
		GDT	Granodiorite

POSTED TEXT	L/R	TEXT	ITEMS
AU_PPM_Labels	R	-----	All
Rock_Code	L	-----	All

SECTION SPECS:

REF. PT. E, N	264970 m	8709474 m
EXTENTS	160.1 m	95.36 m
SECTION TOP, BOT	399.5 m	304.2 m
TOLERANCE +/-	5 m	



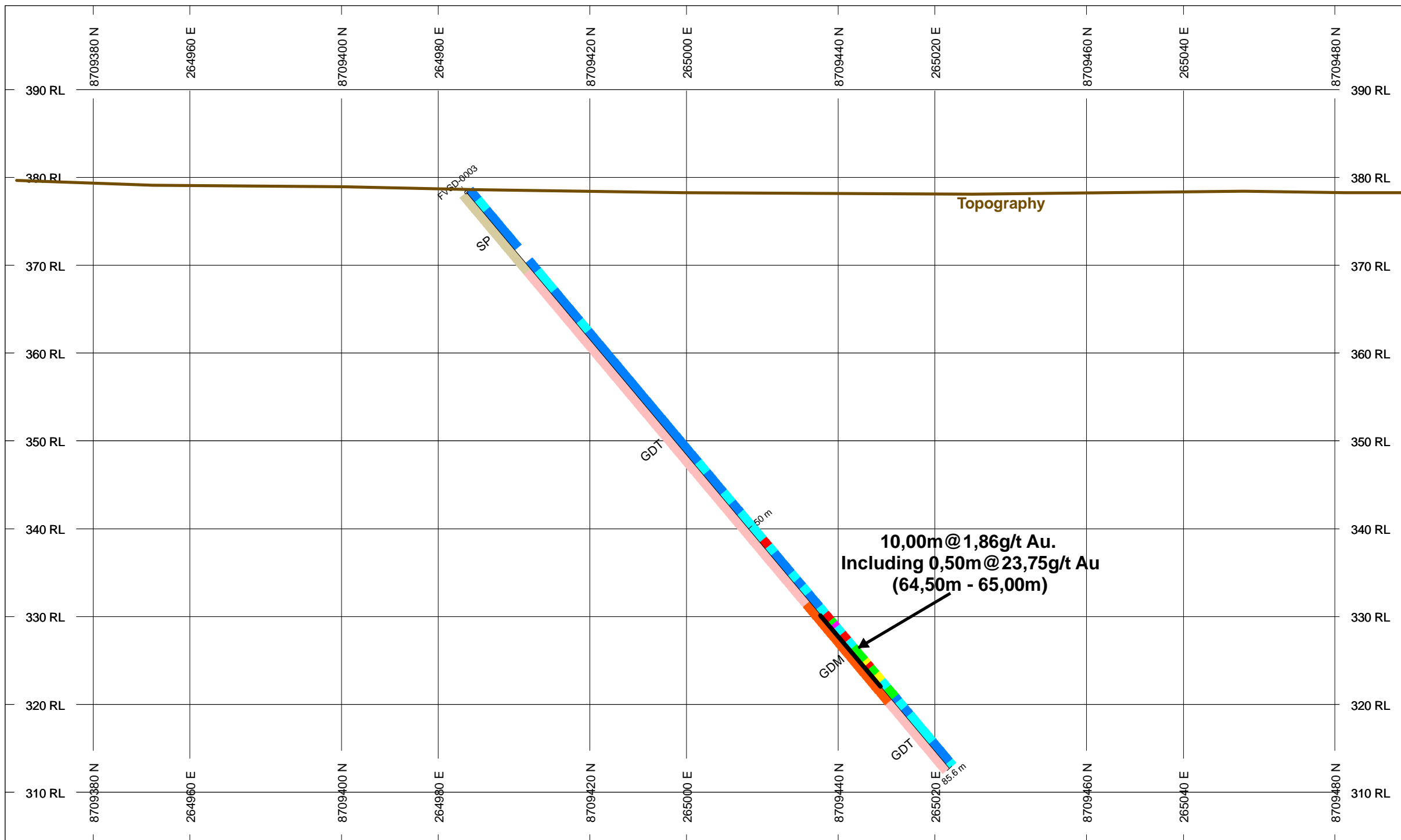


HOLES PLOTTED

TOTAL 1

FVSD-0003

**SECTION-07 FVSD-0003
VIRA SAIA TARGET
ALMAS PROJECT**



TOPOGRAPHY

Topography

NUMBER BANDS	L/R	COL	RANGE
AU_PPM	R		
			3
			1
			0.5
			0.3
			0.05
			0.005
			0

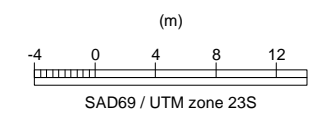
ROCK CODES	PAT	LABEL	DESCRIPTION
Rock_Code		SP	Saprolite
		GDM	Milonite Granodiorite
		GDT	Granodiorite

POSTED TEXT	L/R	TEXT	ITEMS
AU_PPM_Labels	R	-----	All
Rock_Code	L	-----	All

SECTION SPECS:

REF. PT. E, N	265002 m	8709430 m
EXTENTS	160.1 m	95.36 m
SECTION TOP, BOT	399.5 m	304.2 m
TOLERANCE +/-	5 m	

SCALE



AZIMUTH = 45°

