



Figure 1. Photo of core from CH-18 @ 511 m (0.8% Cu), showing chalcopyrite veins with a carbonate and kspars stockwork zone in metavolcanics



Figure 2. Core running about 119 g/t Ag from CH-28 @ 108 m, showing intense kspars alteration with silica and finely disseminated base-metal sulfides (strong QSP alteration)

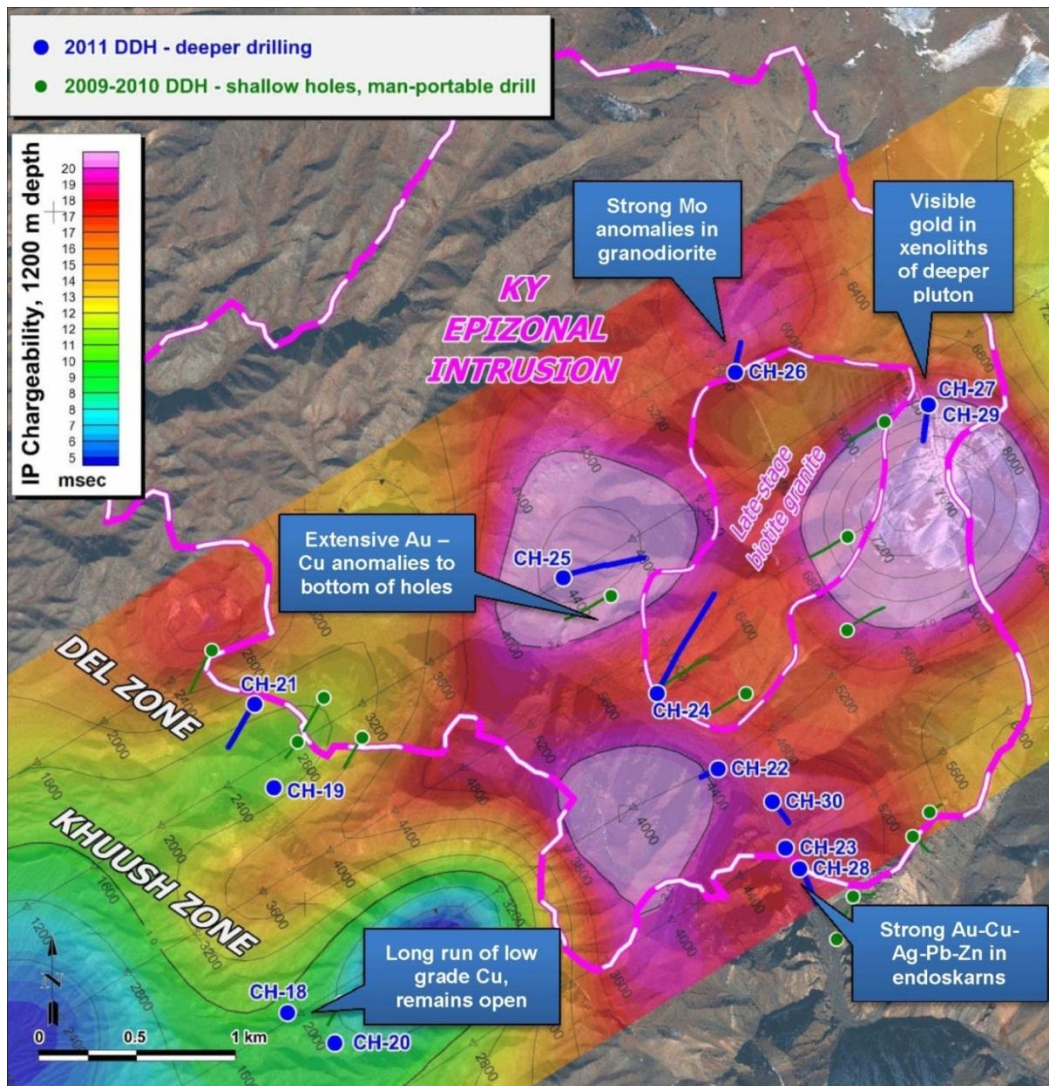


Figure 3. Drill hole location map on deep IP anomalies of the KY porphyry intrusion at the Chandman copper-gold Project in western Mongolia with 2011 deeper drill holes and 2009-2010 shallow drill holes identified.

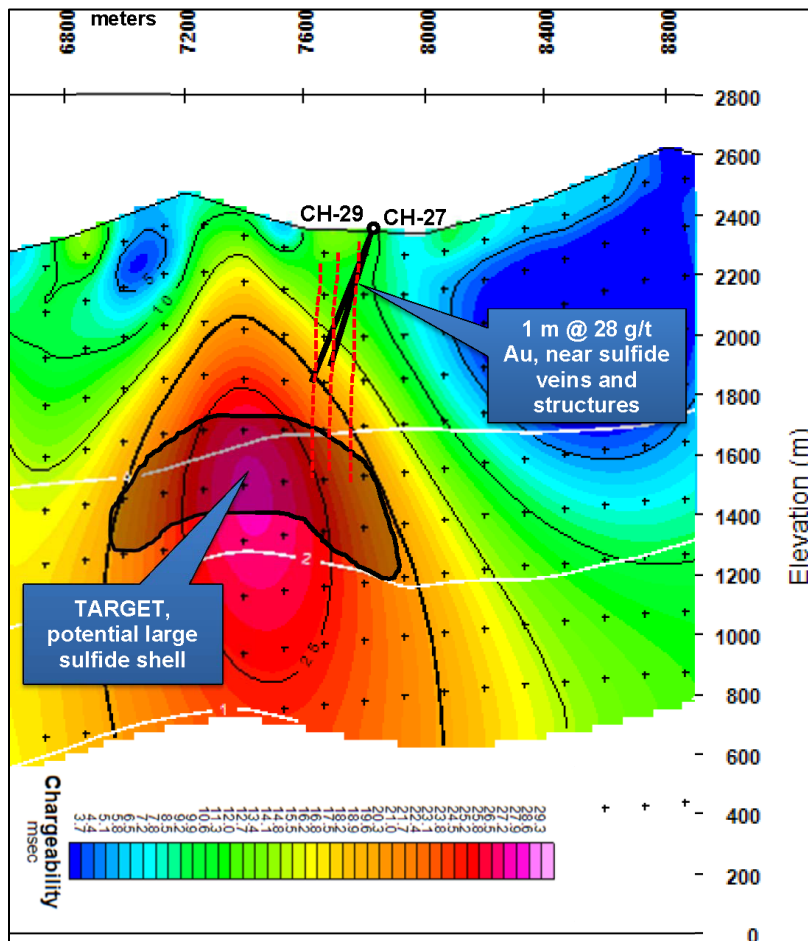


Figure 4. IP Chargeability section over the northern sector of the KY porphyry intrusion showing CH-27 and CH-29 not reaching target depth, but intersecting high-level copper and gold bearing vein systems above a very large IP anomaly