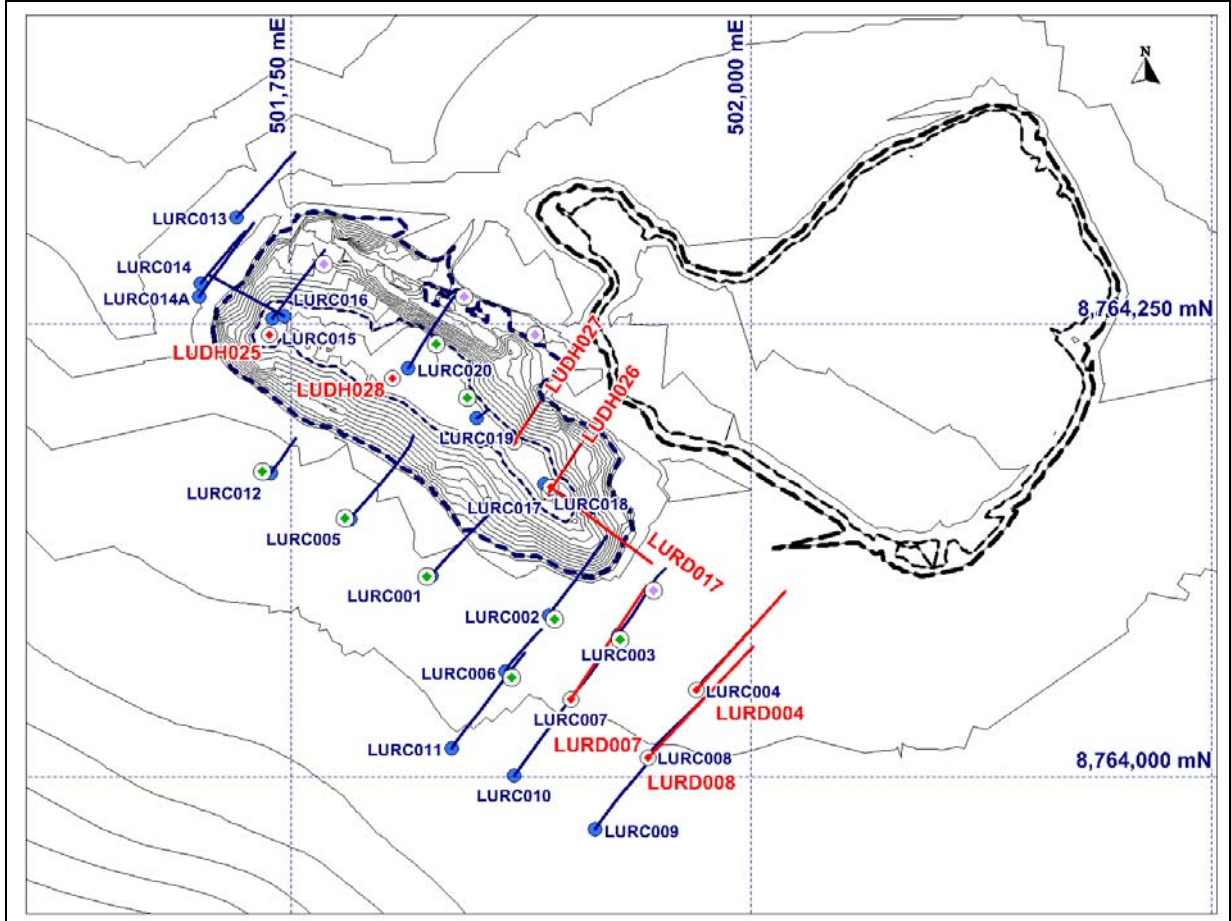




Figure 1: Luisha South Project – Diamond Drill Hole Location Map



(Note: blue circles = June RC holes; red circles = completed diamond tails and new diamond holes; green circles = diamond holes still to complete; mauve circles = possible diamond holes)



**AFRICAN METALS CORPORATION**

Plate 1: Luisha South Project – Diamond Drill core from LUDH025 (35.85m)  
Stromatolitic and dolomitic shales and siltstones of the Mines Series,  
quartz veined and fractured, with carrolite, chalcopyrite, minor chalcocite and  
bornite mineralization.

