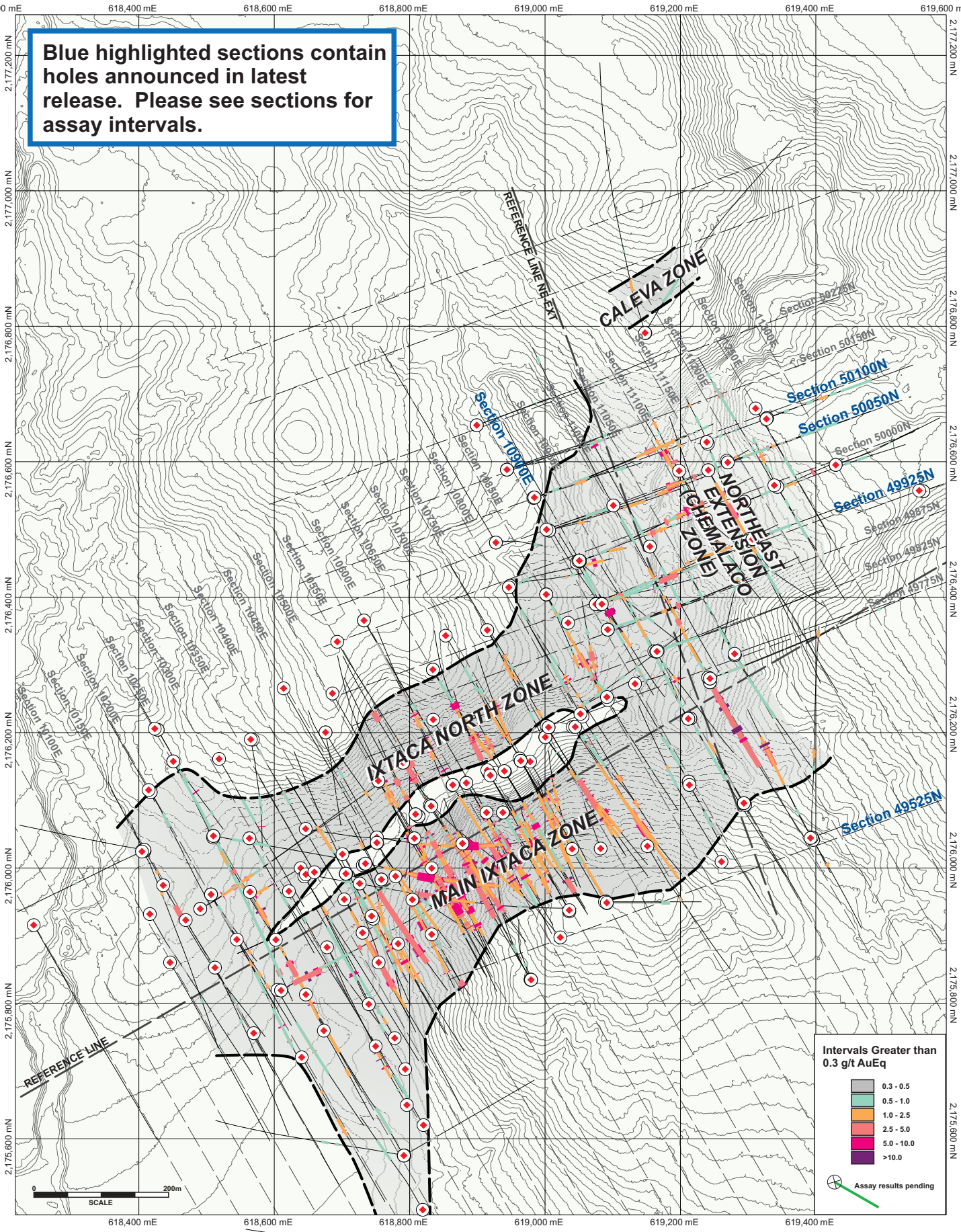


**Blue highlighted sections contain holes announced in latest release. Please see sections for assay intervals.**

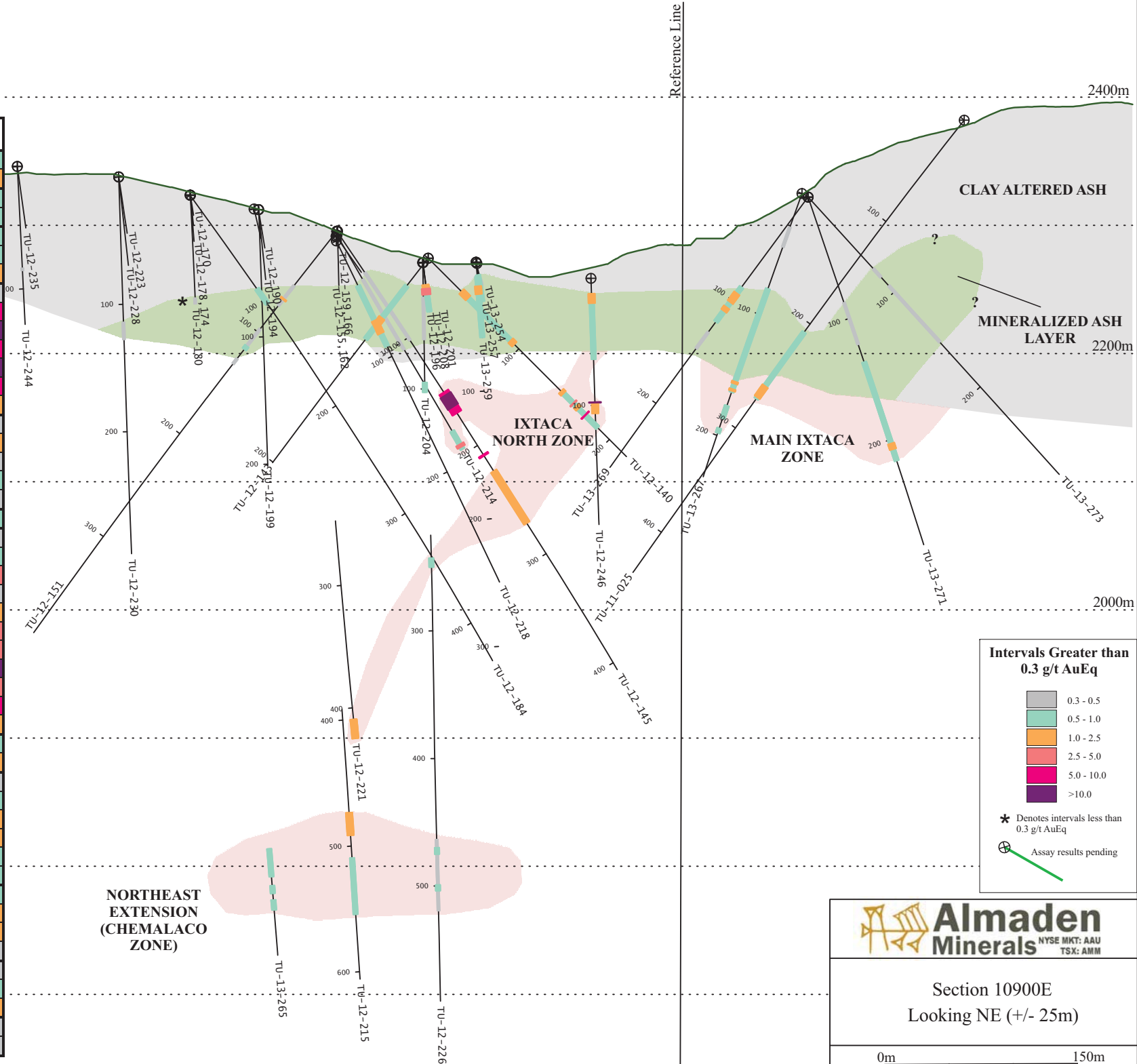


**Intervals Greater than 0.3 g/t AuEq**

0.3 - 0.5
0.5 - 1.0
1.0 - 2.5
2.5 - 5.0
5.0 - 10.0
>10.0

Assay results pending

Hole ID	From (m)	To (m)	Interval (m)	Gold (g/t)	Silver (g/t)	Gold Eq (g/t)
TU-11-025	208.00	272.00	64.00	0.34	14.6	0.6
TU-11-025	260.00	270.60	10.60	0.54	49.4	1.5
TU-12-140	36.90	95.00	58.10	0.54	6.7	0.7
TU-12-140	146.80	187.00	40.20	0.27	14.3	0.6
TU-12-143	27.42	79.70	52.28	0.48	4.5	0.6
including	53.00	67.00	14.00	0.82	1.8	0.9
including	59.00	63.50	4.50	1.07	1.7	1.1
TU-12-145	39.00	102.50	63.50	0.36	3.7	0.4
TU-12-145	151.00	170.00	19.00	0.74	369.1	8.1
including	153.40	164.40	11.00	1.09	580.7	12.7
including	153.40	169.00	15.60	0.83	443.6	9.7
including	157.60	164.40	6.80	1.13	860.7	18.3
TU-12-145	208.50	209.50	1.00	0.35	295.5	6.3
TU-12-145	223.80	271.70	47.90	0.79	41.2	1.6
TU-12-151	54.00	74.00	20.00	0.15	6.8	0.3
including	67.00	68.00	1.00	0.75	43.3	1.6
TU-12-151	97.00	117.00	20.00	0.20	7.1	0.3
including	114.00	117.00	3.00	0.33	13.2	0.6
TU-12-151	126.25	131.50	5.25	0.28	2.2	0.3
TU-12-184	90.00	104.00	14.00	0.43	6.2	0.6
TU-12-214	40.85	106.00	65.15	0.38	2.8	0.4
TU-12-214	181.10	201.70	20.60	0.13	31.3	0.8
including	193.25	195.50	2.25	0.13	145.5	3.0
TU-12-214	209.50	218.60	9.10	0.09	12.6	0.3
TU-12-214	228.50	307.50	79.00	0.20	70.5	1.6
including	249.00	277.00	28.00	0.33	126.6	2.9
including	261.60	275.00	13.40	0.45	215.2	4.8
including	269.50	272.00	2.50	0.90	901.9	18.9
including	286.50	298.20	11.70	0.20	119.0	2.6
including	293.60	297.60	4.00	0.30	263.0	5.6
including	301.50	305.00	3.50	0.29	74.2	1.8
TU-12-218	39.01	91.00	51.99	0.57	3.5	0.6
including	69.00	80.00	11.00	0.96	2.4	1.0
TU-13-267	28.00	44.50	16.50	0.22	2.7	0.3
TU-13-267	79.00	164.40	85.40	0.33	8.7	0.5
including	155.85	157.45	1.60	0.40	57.0	1.5
including	162.00	163.40	1.40	0.95	25.8	1.5
TU-13-267	175.65	185.95	10.30	0.45	5.8	0.6
TU-13-267	194.30	198.00	3.70	0.19	15.3	0.5
TU-13-269	87.50	121.00	33.50	0.83	2.4	0.9
including	93.50	102.00	8.50	1.34	1.9	1.4
including	107.00	110.50	3.50	1.13	2.5	1.2
TU-13-269	131.00	147.00	16.00	0.32	4.5	0.4
TU-13-271	87.00	121.50	34.50	0.19	4.5	0.3
TU-13-271	136.00	217.00	81.00	0.34	6.4	0.5
including	203.00	207.60	4.60	1.53	34.4	2.2
TU-13-273	75.59	84.50	8.91	0.18	5.4	0.3
TU-13-273	93.50	153.00	59.50	0.32	3.7	0.4

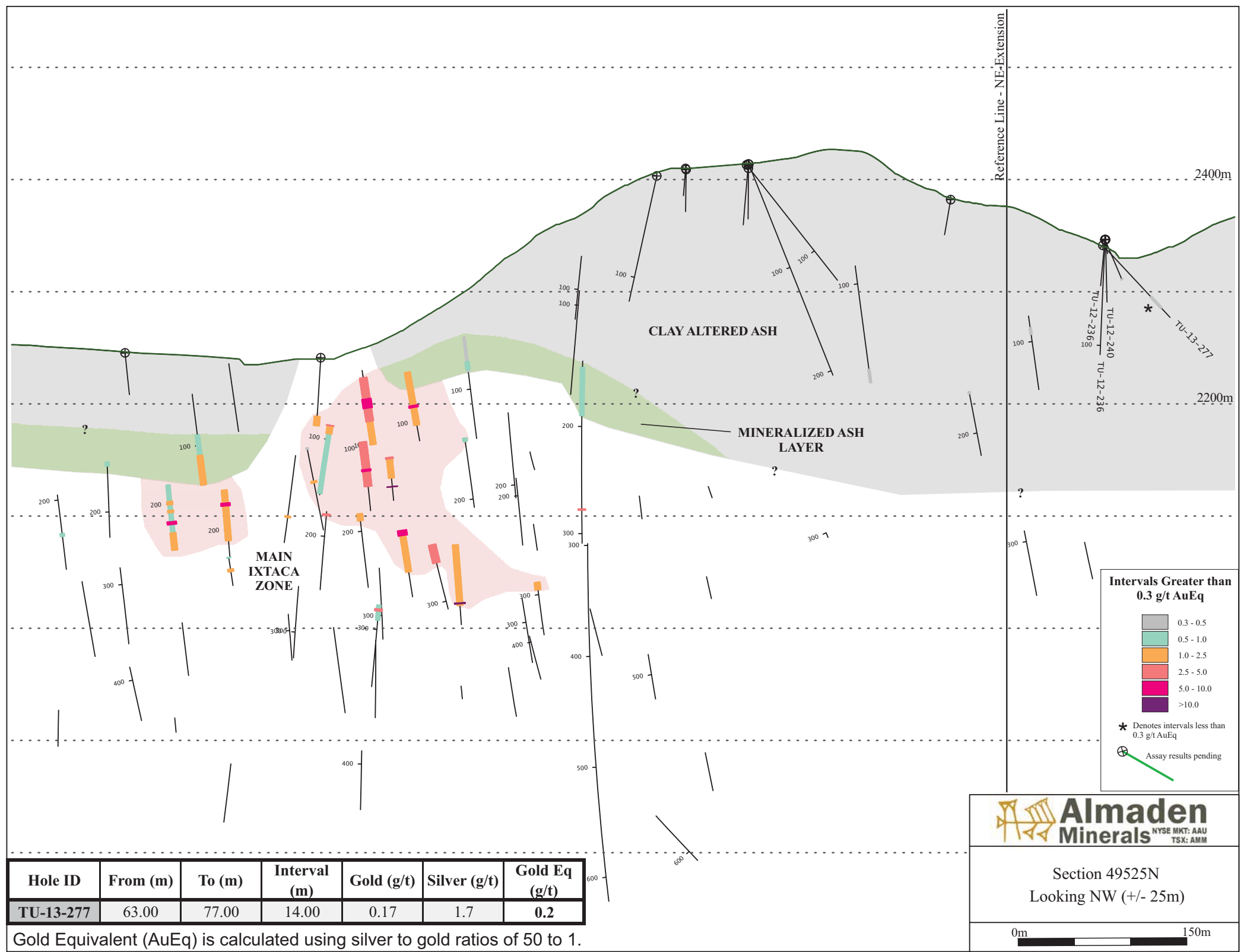


**Almaden Minerals**  
 NYSE MKT: AAU  
 TSX: AMM

Section 10900E  
 Looking NE (+/- 25m)

0m 150m

Gold Equivalent (AuEq) is calculated using silver to gold ratios of 50 to 1.



Reference Line - NE-Extension

2400m

2200m

CLAY ALTERED ASH

MINERALIZED ASH LAYER


MAIN IXTACA ZONE

**Intervals Greater than 0.3 g/t AuEq**

- 0.3 - 0.5
- 0.5 - 1.0
- 1.0 - 2.5
- 2.5 - 5.0
- 5.0 - 10.0
- >10.0

\* Denotes intervals less than 0.3 g/t AuEq

⊕ Assay results pending



**Almaden Minerals**  
NYSE MKT: AAU  
TSX: AMM

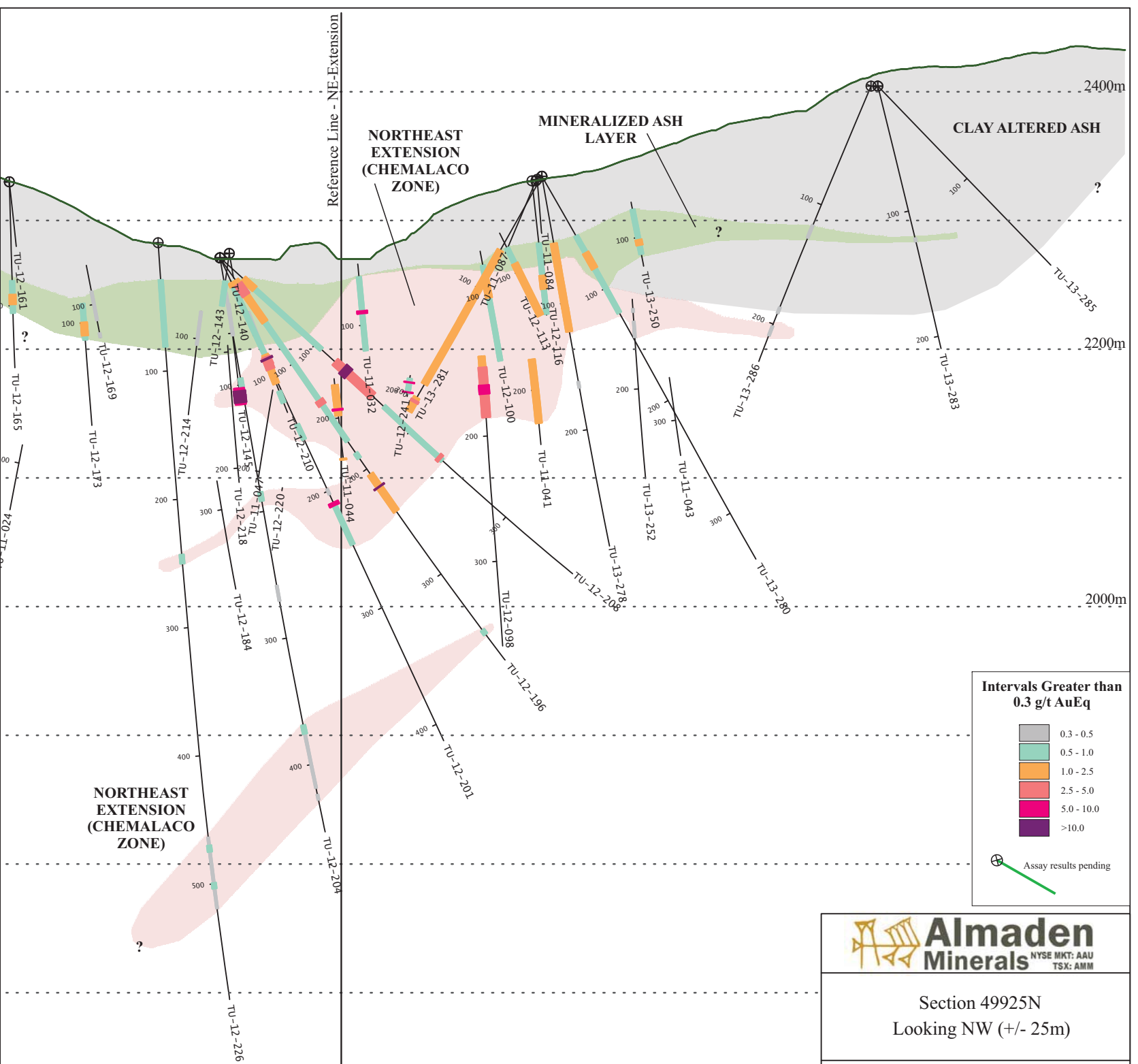
Section 49525N  
Looking NW (+/- 25m)

0m  150m

Hole ID	From (m)	To (m)	Interval (m)	Gold (g/t)	Silver (g/t)	Gold Eq (g/t)
TU-13-277	63.00	77.00	14.00	0.17	1.7	0.2

Gold Equivalent (AuEq) is calculated using silver to gold ratios of 50 to 1.

Hole ID	From (m)	To (m)	Interval (m)	Gold (g/t)	Silver (g/t)	Gold Eq (g/t)
TU-12-196	21.34	173.75	152.41	0.46	12.1	0.7
including	21.34	61.00	39.66	1.21	3.8	1.3
including	25.00	35.50	10.50	3.11	5.1	3.2
including	135.00	139.40	4.40	1.87	119.9	4.3
TU-12-196	185.00	189.80	4.80	0.27	32.4	0.9
TU-12-196	205.00	240.00	35.00	1.58	11.5	1.8
including	216.35	217.35	1.00	49.15	123.5	51.6
TU-12-196	354.25	358.25	4.00	0.35	8.4	0.5
TU-12-201	21.34	94.00	72.66	0.34	17.4	0.7
including	21.34	24.50	3.16	1.58	6.6	1.7
including	86.00	91.75	5.75	0.16	169.9	3.6
including	86.00	87.25	1.25	0.24	618.4	12.6
TU-12-201	143.00	155.70	12.70	0.14	39.7	0.9
TU-12-201	198.10	203.05	4.95	0.11	9.6	0.3
TU-12-201	209.80	245.85	36.05	0.27	15.1	0.6
including	209.80	212.30	2.50	2.65	134.9	5.4
TU-12-204	27.43	61.00	33.57	0.40	2.0	0.4
TU-12-204	95.00	102.60	7.60	0.17	16.5	0.5
TU-12-204	184.70	191.70	7.00	0.07	34.6	0.8
TU-12-204	258.35	270.80	12.45	0.13	9.7	0.3
TU-12-204	368.90	418.80	49.90	0.24	7.9	0.4
including	368.90	375.70	6.80	0.57	14.9	0.9
TU-12-204	423.80	428.30	4.50	0.26	4.4	0.4
TU-12-208	24.38	106.20	81.82	0.44	6.0	0.6
including	24.38	36.10	11.72	1.04	7.8	1.2
TU-12-208	120.60	160.00	39.40	1.45	113.8	3.7
including	128.60	134.85	6.25	8.44	624.8	20.9
including	128.60	131.10	2.50	19.75	1203.8	43.8
TU-12-208	172.00	233.80	61.80	0.24	11.8	0.5
including	229.50	232.00	2.50	2.07	30.8	2.7
TU-12-226	29.00	81.05	52.05	0.44	4.3	0.5
TU-12-226	243.00	250.00	7.00	0.04	21.9	0.5
TU-12-226	463.50	519.50	56.00	0.17	11.1	0.4
including	470.00	475.00	5.00	0.20	30.9	0.8
including	499.25	503.75	4.50	0.59	14.4	0.9
TU-13-278	53.00	122.50	69.50	0.53	21.9	1.0
including	71.00	104.00	33.00	0.83	37.3	1.6
including	71.00	81.00	10.00	1.19	56.7	2.3
TU-13-278	162.00	167.00	5.00	0.10	10.6	0.3
TU-13-280	53.40	122.00	68.60	0.45	13.7	0.7
including	68.50	82.50	14.00	1.21	39.4	2.0
TU-13-281	66.00	185.50	119.50	0.57	24.0	1.0
including	84.00	89.00	5.00	1.04	30.9	1.7
including	128.00	149.50	21.50	1.13	54.7	2.2
TU-13-281	197.50	209.70	12.20	0.42	49.8	1.4
including	200.00	201.75	1.75	1.26	177.6	4.8
TU-13-283	121.50	124.50	3.00	0.00	13.5	0.3
TU-13-286	117.00	128.00	11.00	0.04	16.2	0.4
TU-13-286	185.85	191.00	5.15	0.27	7.1	0.4
TU-13-286	201.50	209.70	8.20	0.13	6.5	0.3



**Intervals Greater than 0.3 g/t AuEq**

- 0.3 - 0.5
- 0.5 - 1.0
- 1.0 - 2.5
- 2.5 - 5.0
- 5.0 - 10.0
- >10.0

Assay results pending

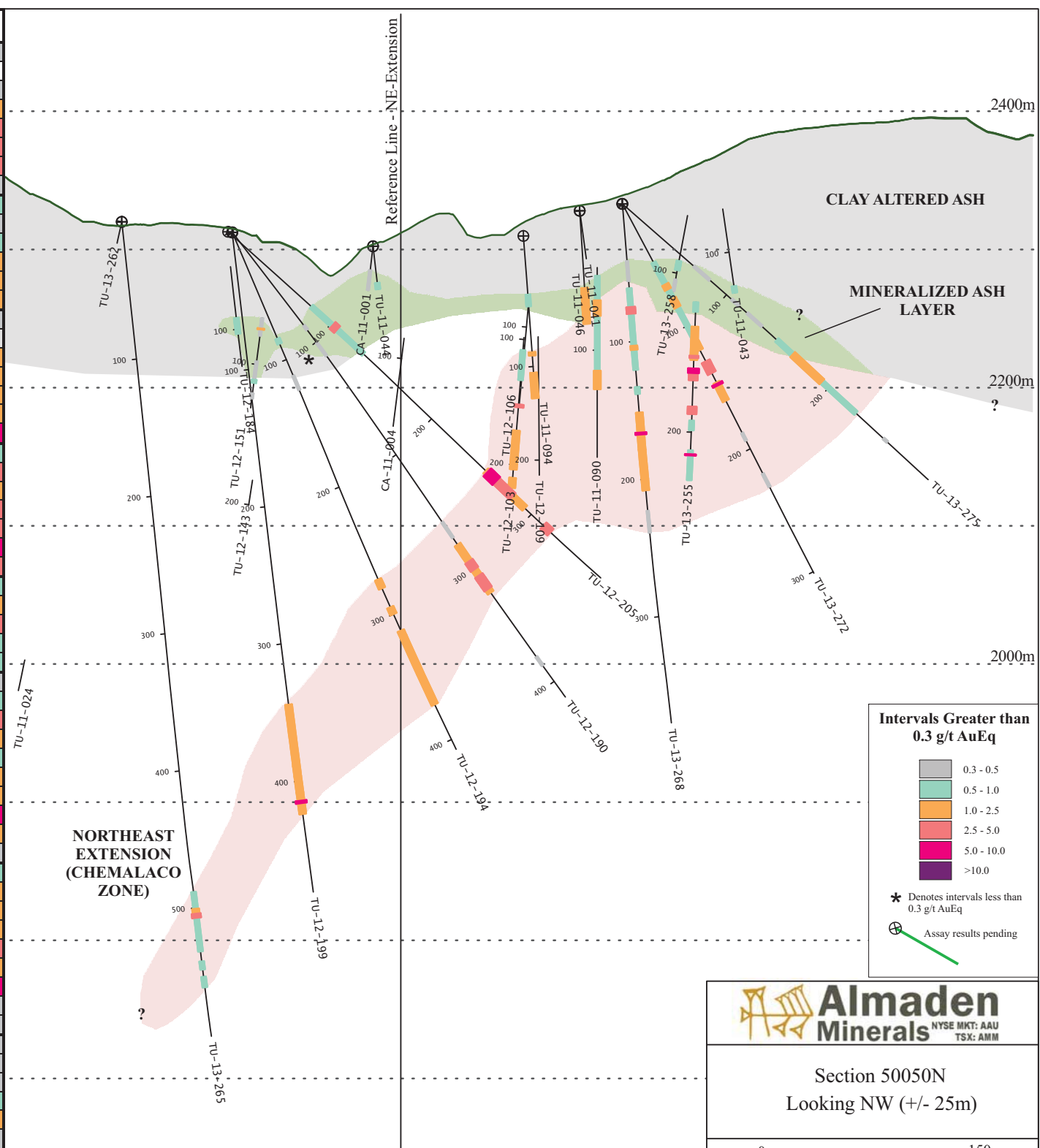
**Almaden Minerals**  
NYSE MKT: AAU  
TSX: AMM

Section 49925N  
Looking NW (+/- 25m)

0m 150m

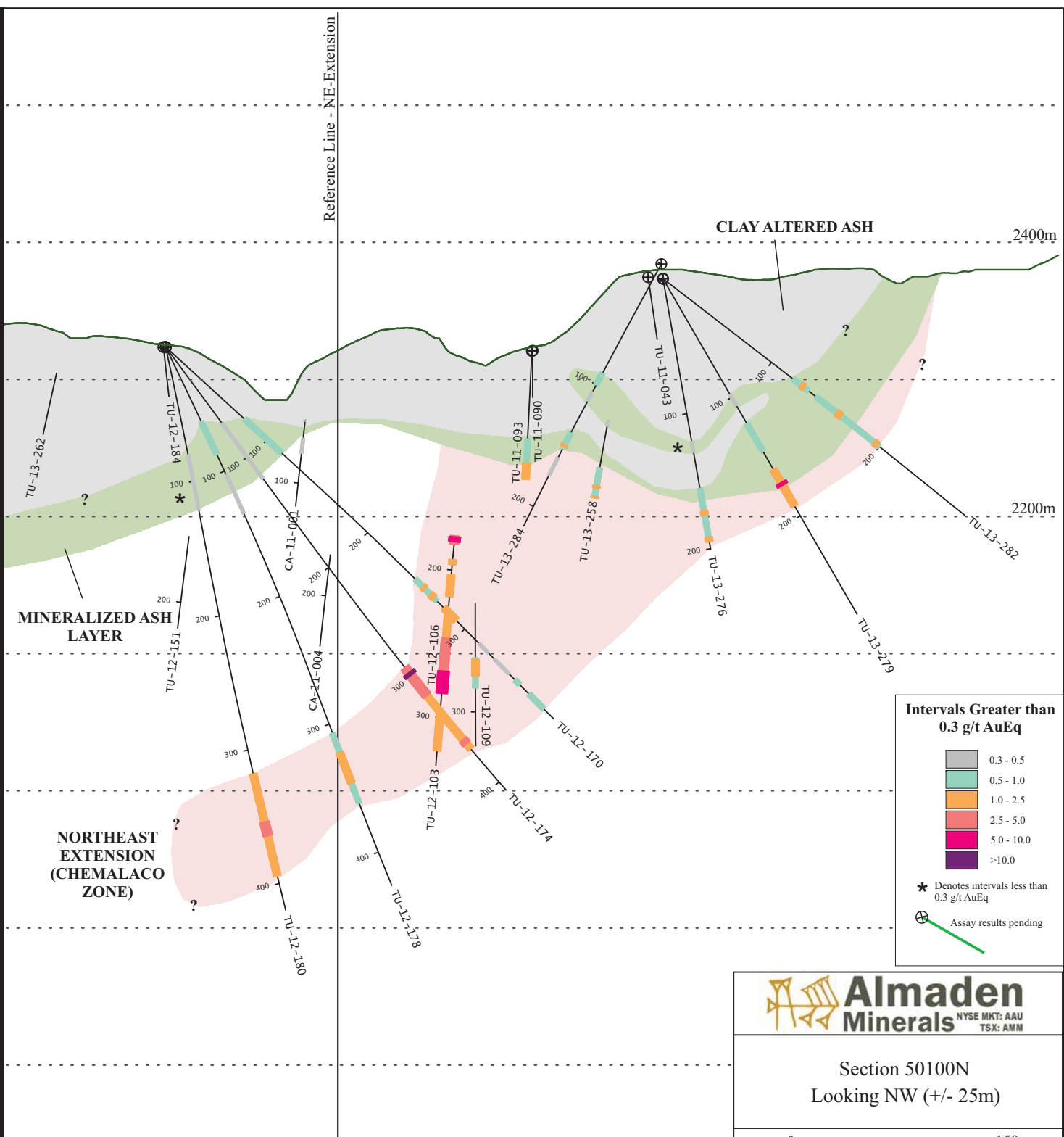
Gold Equivalent (AuEq) is calculated using silver to gold ratios of 50 to 1.

Hole ID	From (m)	To (m)	Interval (m)	Gold (g/t)	Silver (g/t)	Gold Eq (g/t)
TU-12-190	85.00	89.00	4.00	0.25	0.5	0.3
TU-12-190	100.00	112.00	12.00	0.17	1.9	0.2
TU-12-190	259.00	272.90	13.90	0.17	12.3	0.4
TU-12-190	278.85	321.00	42.15	1.06	47.4	2.0
including	293.50	300.50	7.00	1.34	72.0	2.8
including	306.00	317.80	11.80	1.67	71.7	3.1
including	310.00	314.00	4.00	2.45	116.4	4.8
TU-12-190	377.90	386.00	8.10	0.24	2.8	0.3
TU-12-194	83.50	87.50	4.00	0.46	2.8	0.5
TU-12-194	112.60	124.00	11.40	0.22	4.4	0.3
TU-12-194	272.50	279.50	7.00	0.15	40.9	1.0
TU-12-194	294.50	300.00	5.50	0.14	81.1	1.8
TU-12-194	313.00	371.80	58.80	1.04	19.4	1.4
including	317.60	347.00	29.40	1.63	23.9	2.1
TU-12-199	66.00	70.00	4.00	0.26	2.4	0.3
TU-12-199	91.00	93.80	2.80	0.19	3.0	0.2
TU-12-199	344.20	424.00	79.80	0.84	20.6	1.3
including	365.70	385.70	20.00	1.19	25.6	1.7
including	396.50	402.50	6.00	1.43	16.0	1.8
including	408.30	423.40	15.10	1.48	37.6	2.2
including	414.30	416.10	1.80	4.90	175.5	8.4
TU-12-205	81.00	132.00	51.00	0.51	6.0	0.6
including	101.50	106.00	4.50	3.41	6.1	3.5
TU-12-205	254.50	293.50	39.00	0.61	88.8	2.4
including	255.50	281.20	25.70	0.86	127.8	3.4
including	256.00	272.40	16.40	1.08	164.8	4.4
including	256.00	265.00	9.00	1.57	244.5	6.5
TU-12-205	312.00	319.00	7.00	0.19	207.2	4.3
TU-13-265	488.40	531.80	43.40	0.50	9.2	0.7
including	500.60	507.20	6.60	2.15	11.6	2.4
including	504.20	507.20	3.00	3.36	17.1	3.7
TU-13-265	539.00	545.00	6.00	0.07	22.2	0.5
TU-13-265	550.30	558.00	7.70	0.07	28.1	0.6
TU-13-268	41.30	56.25	14.95	0.05	11.5	0.3
TU-13-268	61.25	120.50	59.25	0.11	41.1	0.9
including	74.90	79.75	4.85	0.25	126.9	2.8
including	103.00	106.00	3.00	0.23	81.2	1.9
TU-13-268	133.00	138.00	5.00	0.03	22.3	0.5
TU-13-268	151.50	208.00	56.50	0.36	42.0	1.2
including	166.00	178.50	12.50	0.56	91.4	2.4
including	166.00	167.50	1.50	0.74	223.7	5.2
including	192.00	199.50	7.50	0.75	51.6	1.8
TU-13-268	222.75	239.00	16.25	0.08	14.6	0.4
TU-13-272	48.00	138.50	90.50	0.20	31.4	0.8
including	66.05	70.20	4.15	0.44	49.5	1.4
including	77.50	84.80	7.30	0.29	71.1	1.7
including	112.75	119.75	7.00	0.43	40.1	1.2
including	129.00	138.50	9.50	0.41	114.0	2.7
TU-13-272	146.00	161.00	15.00	0.22	47.1	1.2
including	147.00	148.50	1.50	0.65	252.7	5.7
TU-13-272	187.00	193.50	6.50	0.11	11.5	0.3
TU-13-272	220.00	231.00	11.00	0.14	9.5	0.3
TU-13-275	68.50	84.00	15.50	0.15	10.6	0.4
TU-13-275	105.00	112.00	7.00	0.11	15.8	0.4
TU-13-275	120.00	134.50	14.50	0.18	6.2	0.3
TU-13-275	149.00	227.00	78.00	0.39	23.8	0.9
including	164.50	193.50	29.00	0.43	43.3	1.3
TU-13-275	254.00	258.00	4.00	0.01	13.5	0.3



Gold Equivalent (AuEq) is calculated using silver to gold ratios of 50 to 1.

Hole ID	From (m)	To (m)	Interval (m)	Gold (g/t)	Silver (g/t)	Gold Eq (g/t)
TU-12-170	78.00	114.20	36.20	0.30	11.8	0.5
TU-12-170	249.00	271.00	22.00	0.17	31.0	0.8
including	256.50	258.50	2.00	0.47	83.1	2.1
including	264.50	268.00	3.50	0.37	64.8	1.7
TU-12-170	278.50	291.00	12.50	0.21	70.3	1.6
including	282.00	290.00	8.00	0.30	101.4	2.3
TU-12-170	315.00	324.50	9.50	0.23	10.3	0.4
TU-12-170	331.00	346.00	15.00	0.09	9.8	0.3
TU-12-170	352.50	357.00	4.50	0.42	17.4	0.8
TU-12-170	367.00	382.00	15.00	0.15	16.9	0.5
TU-12-174	69.00	119.00	50.00	0.20	11.0	0.4
TU-12-174	268.20	368.00	99.80	1.10	33.2	1.8
including	292.00	317.80	25.80	1.70	44.5	2.6
including	296.50	299.00	2.50	9.26	96.4	11.2
including	345.50	352.40	6.90	0.16	91.4	2.0
including	359.60	363.20	3.60	0.06	130.4	2.7
TU-12-178	60.50	86.50	26.00	0.39	7.1	0.5
TU-12-178	102.50	134.20	31.70	0.15	5.8	0.3
TU-12-178	307.00	361.50	54.50	0.54	9.0	0.7
including	322.00	345.80	23.80	1.01	10.8	1.2
TU-12-180	81.00	122.00	41.00	0.08	8.5	0.2
TU-12-180	318.00	394.00	76.00	0.64	16.5	1.0
including	333.50	338.50	5.00	0.35	56.5	1.5
including	354.00	364.00	10.00	2.16	31.5	2.8
including	375.00	380.50	5.50	1.83	20.4	2.2
TU-13-276	120.50	128.50	8.00	0.07	8.1	0.2
TU-13-276	155.50	200.70	45.20	0.23	17.0	0.6
including	172.25	175.25	3.00	0.76	43.4	1.6
including	191.50	194.75	3.25	0.26	81.9	1.9
TU-13-279	98.00	107.00	9.00	0.08	11.6	0.3
TU-13-279	122.50	145.50	23.00	0.30	15.2	0.6
TU-13-279	161.00	191.41	30.41	0.73	33.1	1.4
including	170.70	185.32	14.62	1.15	54.9	2.2
including	172.10	174.00	1.90	2.33	268.2	7.7
TU-13-282	120.00	134.00	14.00	0.43	7.3	0.6
including	127.30	130.00	2.70	1.21	7.5	1.4
TU-13-282	141.00	200.00	59.00	0.23	19.9	0.6
including	160.00	164.30	4.30	0.44	97.2	2.4
including	195.00	198.00	3.00	0.91	17.2	1.2
TU-13-284	90.70	100.00	9.30	0.03	21.7	0.5
TU-13-284	106.00	113.50	7.50	0.07	14.0	0.3
TU-13-284	140.00	152.45	12.45	0.25	24.9	0.7
including	149.50	151.00	1.50	0.21	104.3	2.3
TU-13-284	160.00	174.50	14.50	0.07	9.8	0.3



Gold Equivalent (AuEq) is calculated using silver to gold ratios of 50 to 1.