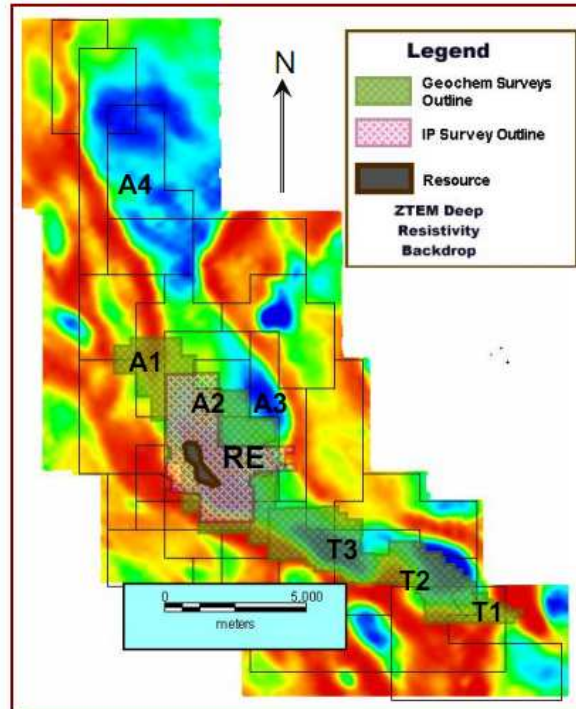


# ZTEM Deep Resistivity

## Correlates with Cu Geochem

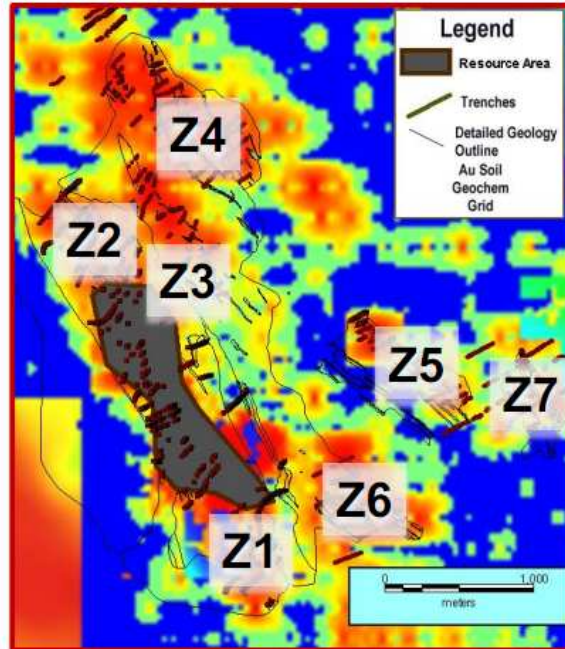
- RE - Resource Expansion potential, open in 3 directions and at depth
- T – Primary Targets recently identified
- A - Areas of Interest



# Resource Area Development Zones

## ZTEM Correlates with Au Geochem

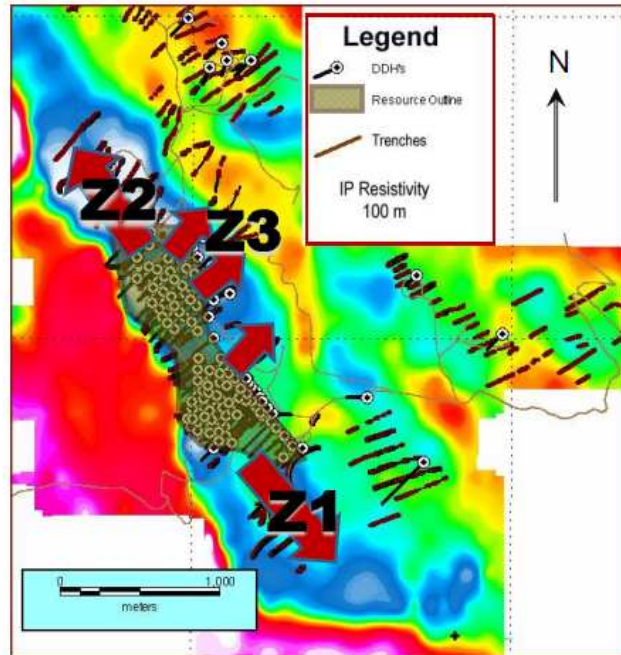
- Geophysics interpretation suggests multiple zones are connected at depth
- Dimensions 3 km X 4 km
- 3 adjacent zones
  - Z1 - Viscachani
  - Z2 - Antares
  - Z3 - East Antares
- 4 peripheral zones
  - Z4 - Montaña Cobre y Oro
  - Z5 - Minas Jorge
  - Z6 - Los Vientos
  - Z7 - Pedro



# Resource Expansion – Adjacent Zones

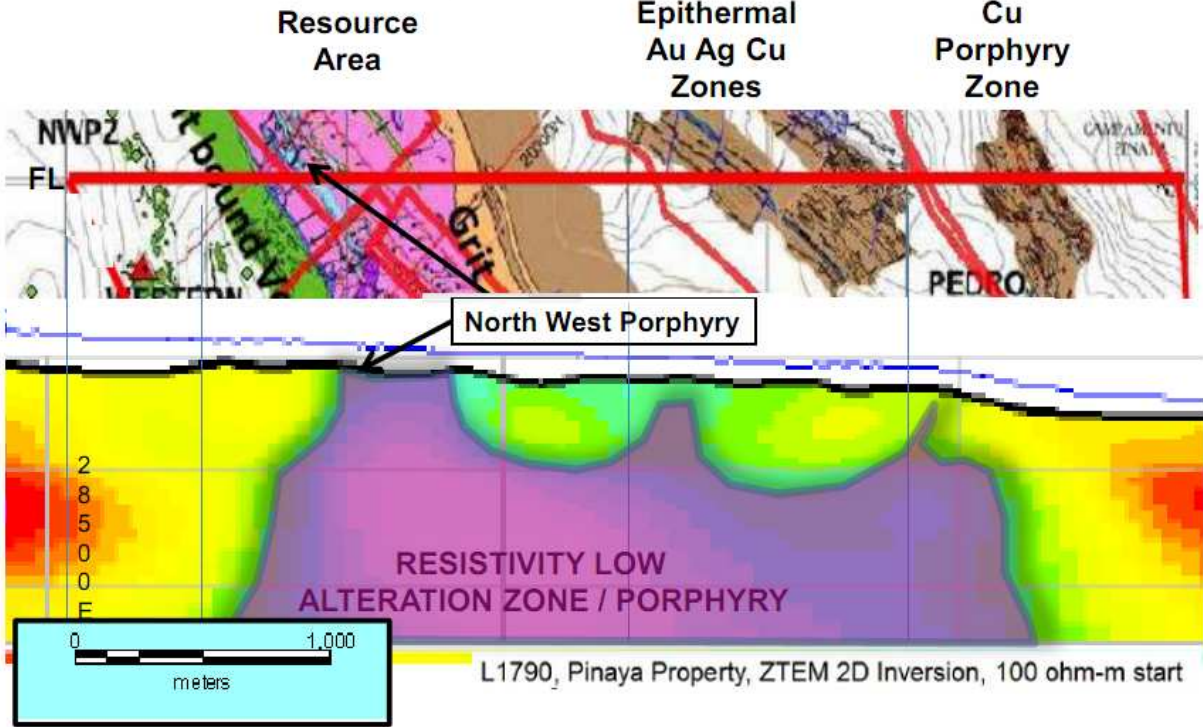
## ZTEM correlates with IP Resistivity

- Resource area open in 3 directions and at depth
- Overall strike length at surface traced for 3 km +
- Z1 – Viscachani (South)
  - strong drill & trench results
  - ZTEM & IP indicates extension
- Z2 - Antares (North)
  - positive trench & geochem
  - IP confirms extension
  - Au w Cu in geochem
- Z3 - East Antares (East)
  - positive trench & geochem
  - epithermal E flank of NWP
  - Ag mineralization



# ZTEM Profile Across Resource Area

## Large Scale System





# Property Wide Potential ZTEM Magnetics

- Resource Proximity
  - 3 adjacent zones
  - 4 peripheral zones
- South Pinaya
  - 3 high priority exploration targets identified
- North Pinaya
  - several areas of interest
  - wide open for exploration

