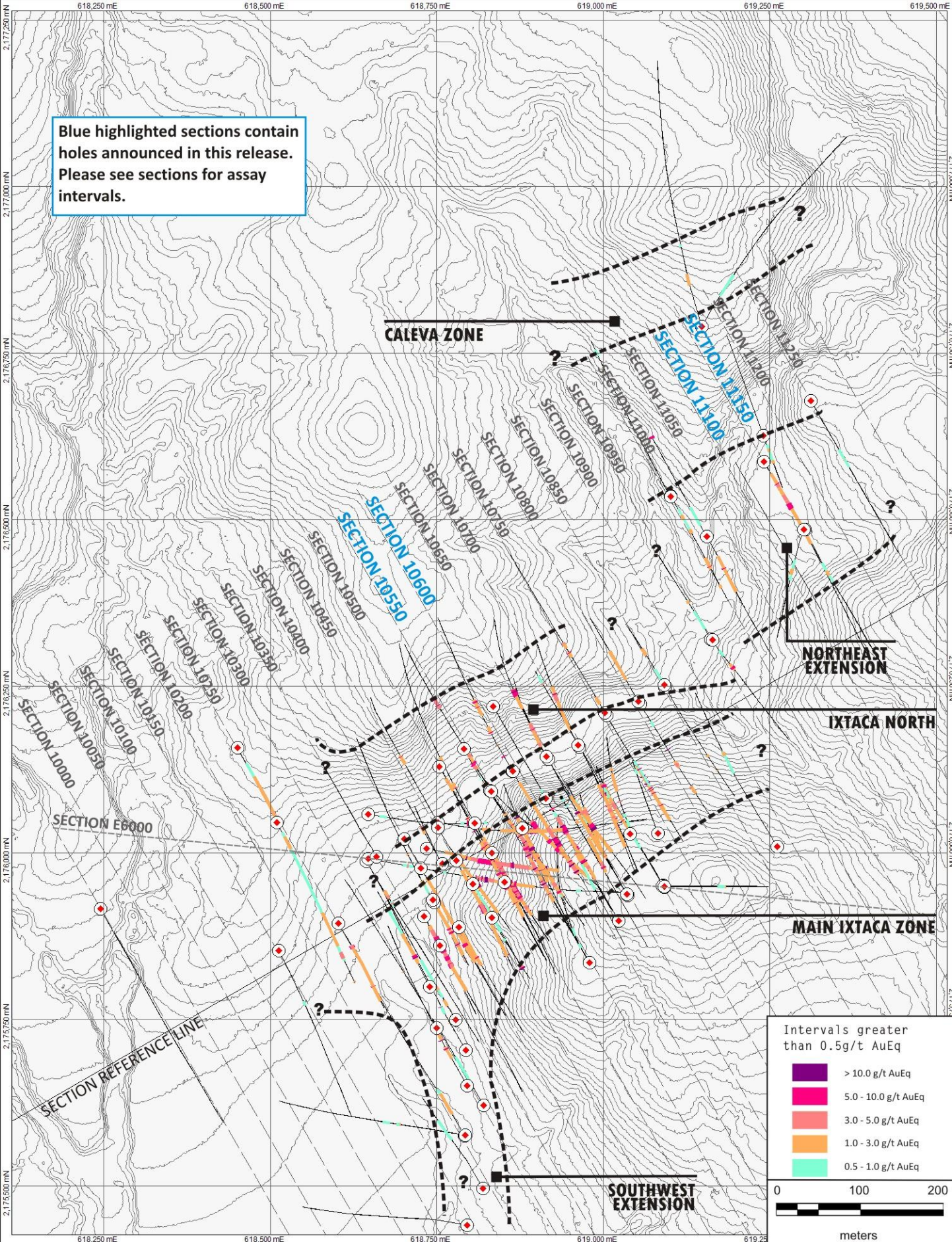
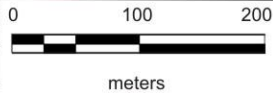


Blue highlighted sections contain holes announced in this release. Please see sections for assay intervals.



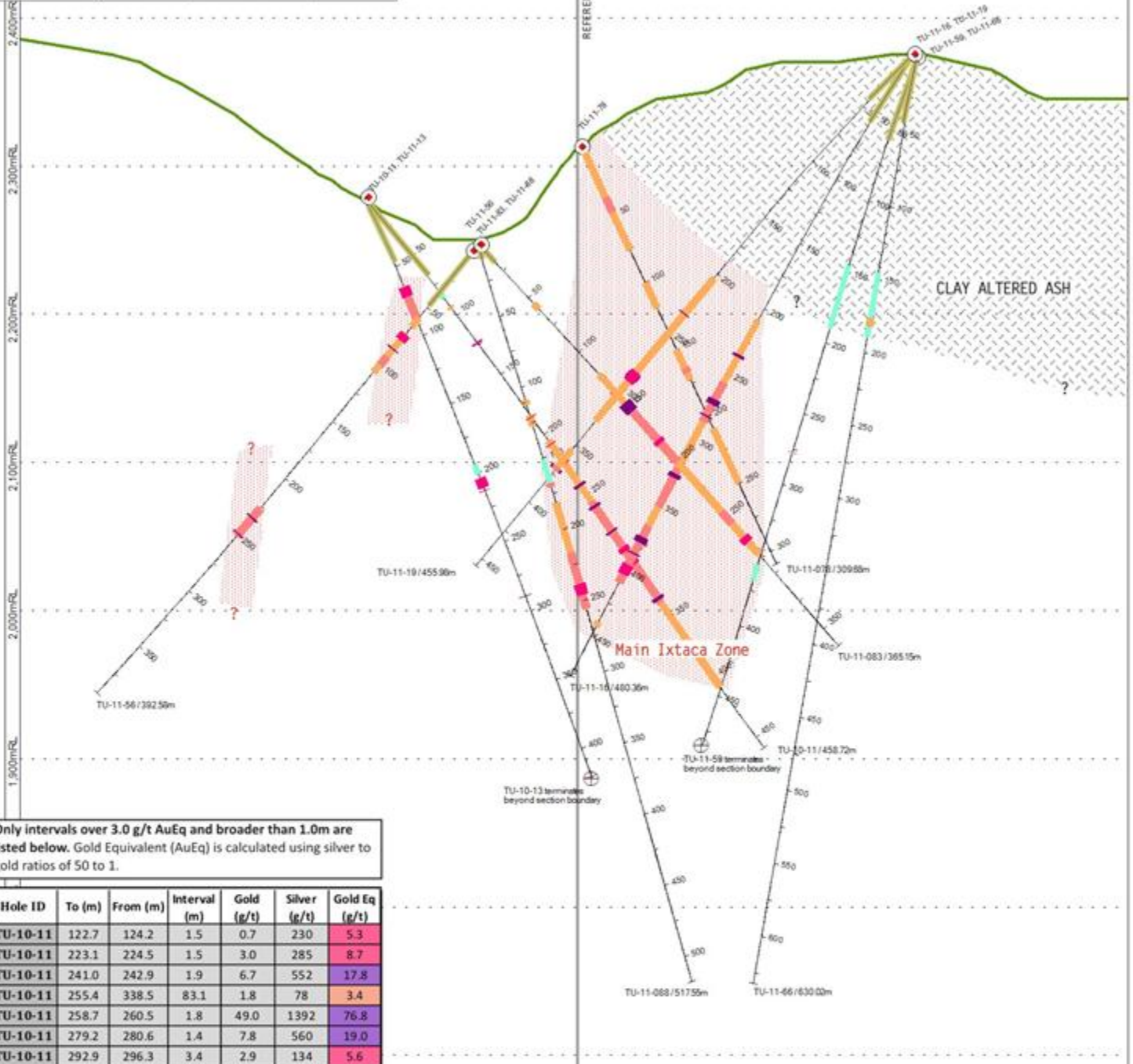
Intervals greater than 0.5g/t AuEq

	> 10.0 g/t AuEq
	5.0 - 10.0 g/t AuEq
	3.0 - 5.0 g/t AuEq
	1.0 - 3.0 g/t AuEq
	0.5 - 1.0 g/t AuEq



SECTION 10550

Looking NE (+/-25m)



Only intervals over 3.0 g/t AuEq and broader than 1.0m are listed below. Gold Equivalent (AuEq) is calculated using silver to gold ratios of 50 to 1.

Hole ID	To (m)	From (m)	Interval (m)	Gold (g/t)	Silver (g/t)	Gold Eq (g/t)
TU-10-11	122.7	124.2	1.5	0.7	230	5.3
TU-10-11	223.1	224.5	1.5	3.0	285	8.7
TU-10-11	241.0	242.9	1.9	6.7	552	17.8
TU-10-11	255.4	338.5	83.1	1.8	78	3.4
TU-10-11	258.7	260.5	1.8	49.0	1392	76.8
TU-10-11	279.2	280.6	1.4	7.8	560	19.0
TU-10-11	292.9	296.3	3.4	2.9	134	5.6
TU-10-11	303.1	306.9	3.8	2.8	113	5.1
TU-10-11	333.9	336.4	2.5	6.3	237	11.0
TU-10-13	64.9	89.0	24.1	1.4	99	3.4
TU-10-13	64.9	72.1	7.2	2.6	193	6.4
TU-11-16	235.3	237.2	1.9	3.7	776	19.2
TU-11-16	256.5	286.6	30.1	1.5	164	4.8
TU-11-16	269.3	273.7	4.4	4.3	577	15.9
TU-11-16	281.8	282.8	1.1	18.2	2250	63.2
TU-11-16	317.2	351.5	34.3	1.7	95	3.6
TU-11-16	326.3	329.3	3.0	6.1	602	18.2
TU-11-16	338.9	349.1	10.2	2.9	72	4.3
TU-11-16	365.9	409.4	43.5	1.6	119	4.0
TU-11-16	374.2	378.8	4.5	4.2	280	9.8
TU-11-16	386.7	387.7	1.0	6.9	524	17.4
TU-11-16	395.6	403.0	7.4	2.5	208	6.6
TU-11-19	285.6	294.1	8.6	3.0	185	6.7
TU-11-19	287.2	292.0	4.8	4.6	273	10.1
TU-11-19	305.9	308.4	2.4	1.6	161	4.8
TU-11-19	369.2	372.1	2.9	3.5	419	11.8

Hole ID	To (m)	From (m)	Interval (m)	Gold (g/t)	Silver (g/t)	Gold Eq (g/t)
TU-11-56	73.3	78.5	5.3	5.3	78	6.8
TU-11-56	85.7	86.7	1.0	6.0	413	14.2
TU-11-56	92.7	100.0	7.3	1.9	101	3.9
TU-11-56	226.2	251.0	24.9	0.7	163	4.0
TU-11-56	234.1	235.4	1.3	2.5	853	19.5
TU-11-56	248.5	249.4	1.0	13.9	2577	65.4
TU-11-78	37.0	48.0	11.0	2.0	101	4.1
TU-11-78	163.7	167.4	3.7	1.8	155	4.9
TU-11-83	146.1	200.2	54.1	2.3	106	4.4
TU-11-83	146.1	154.1	8.0	9.8	493	19.7
TU-11-83	179.7	183.0	3.3	6.4	83	8.1
TU-11-83	244.7	255.5	10.9	2.0	98	3.9
TU-11-83	267.5	272.3	4.8	3.2	94	5.1
TU-11-88	167.6	170.5	2.9	1.4	104	3.5
TU-11-88	216.7	256.0	39.3	1.4	91	3.2
TU-11-88	238.6	246.3	7.7	3.9	250	9.0

LEGEND:

Intervals greater than 0.5g/t AuEq

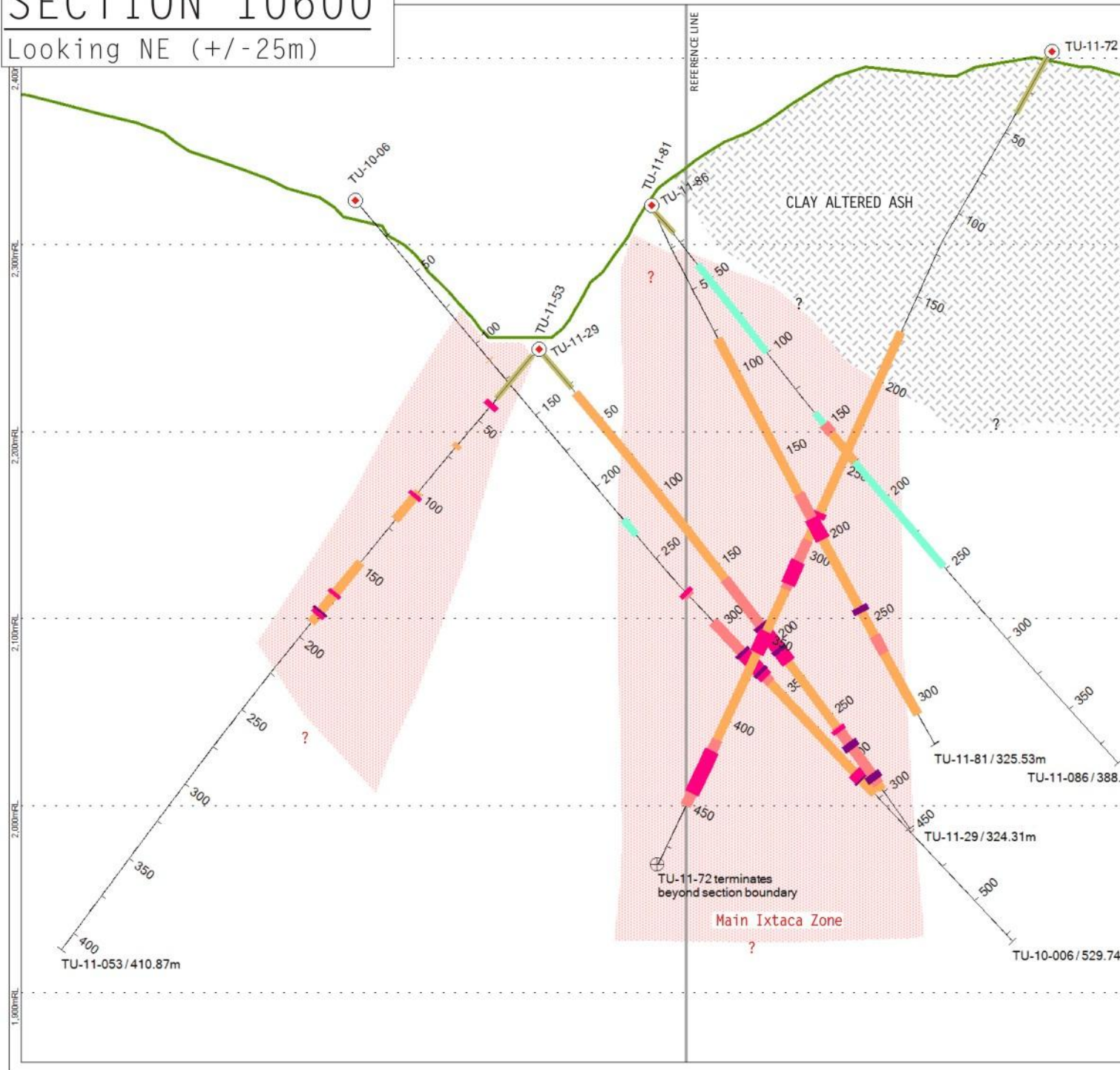
- > 10.0
- 5.0-10.0
- 3.0-5.0
- 1.0-3.0
- 0.5-1.0

Overburden

SECTION 10600

Looking NE (+/-25m)

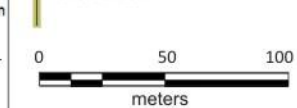
Only intervals over 1.0 g/t AuEq are listed below.
Gold Equivalent (AuEq) is calculated using silver to gold ratios of 50 to 1.



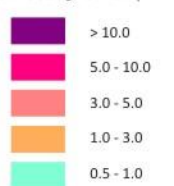
Hole ID	To (m)	From (m)	Interval (m)	Gold (g/t)	Silver (g/t)	Gold Eq (g/t)
TU-10-06	273.3	277.5	4.3	1.4	130	4.0
TU-10-06	273.3	276.0	2.7	2.1	203	6.1
TU-10-06	295.6	421.8	126.2	0.9	62	2.1
TU-10-06	295.6	340.7	45.1	1.4	92	3.2
TU-10-06	317.5	336.7	19.2	2.8	160	6.0
TU-10-06	317.5	319.7	2.2	6.7	475	16.2
TU-10-06	331.6	336.7	5.1	5.5	242	10.3
TU-10-06	405.9	412.1	6.2	2.6	209	6.7
TU-10-06	410.9	412.1	1.2	6.8	482	16.5
TU-11-29	30.4	299.0	268.5	0.6	40	1.4
TU-11-29	158.2	214.4	56.2	1.2	86	3.0
TU-11-29	188.9	214.4	25.5	2.3	134	5.0
TU-11-29	188.9	191.4	2.5	4.5	385	12.2
TU-11-29	204.7	207.4	2.7	10.8	534	21.5
TU-11-29	257.1	295.5	38.3	1.8	107	3.9
TU-11-29	258.0	260.6	2.6	3.5	107	5.7
TU-11-29	267.8	271.8	3.9	4.2	386	11.9
TU-11-29	288.6	292.7	4.1	4.7	256	9.8
TU-11-53	37.9	41.1	3.2	1.5	244	6.4
TU-11-53	99.7	119.4	19.7	0.4	37	1.2
TU-11-53	101.5	103.7	2.2	2.9	243	7.7
TU-11-53	148.5	190.5	42.0	0.6	49	1.6
TU-11-53	169.5	171.5	2.0	2.9	279	8.5
TU-11-53	182.0	185.5	3.5	2.6	238	7.4
TU-11-53	182.0	183.4	1.5	5.7	553	16.8
TU-11-72	170.9	451.0	280.2	0.8	49	1.8
TU-11-72	277.5	281.0	3.5	3.1	174	6.6
TU-11-72	294.0	323.0	29.0	2.4	103	4.5
TU-11-72	306.3	320.1	13.8	4.5	156	7.6
TU-11-72	347.9	360.6	12.7	2.1	169	5.5
TU-11-72	411.7	451.0	39.3	1.6	107	3.7
TU-11-72	418.2	443.6	25.4	2.1	144	5.0
TU-11-81	79.4	307.3	227.9	0.5	41	1.3
TU-11-81	173.1	200.9	27.7	1.1	100	3.1
TU-11-81	173.1	177.3	4.2	2.5	101	4.5
TU-11-81	188.0	200.9	12.9	1.4	178	5.0
TU-11-81	241.6	245.0	3.4	2.9	373	10.4
TU-11-81	259.1	269.9	10.8	1.3	101	3.3
TU-11-86	149.0	175.0	26.0	0.5	40	1.3
TU-11-86	149.0	155.3	6.3	1.4	91	3.2

LEGEND:

Overburden



Intervals greater than 0.5 g/t AuEq



SECTION 11100

Looking NE (+/-25m)



Hole ID	To (m)	From (m)	Interval (m)	Gold (g/t)	Silver (g/t)	Gold Eq (g/t)
TU-11-94	45.0	54.0	9.0	0.2	13	0.5
TU-11-94	89.1	91.6	2.5	0.3	87	2.1
TU-11-94	104.8	233.2	128.4	0.4	49	1.4
TU-11-94	154.9	159.7	4.8	1.0	122	3.5

Gold Equivalent (AuEq) were calculated using silver to gold ratios of 50 to 1.

LEGEND:

Overburden

0 50 100 meters

Intervals greater than 0.5 g/t AuEq

- > 10.0
- 5.0 - 10.0
- 3.0 - 5.0
- 1.0 - 3.0
- 0.5 - 1.0

SECTION 11150

Looking NE (+/-25m)

