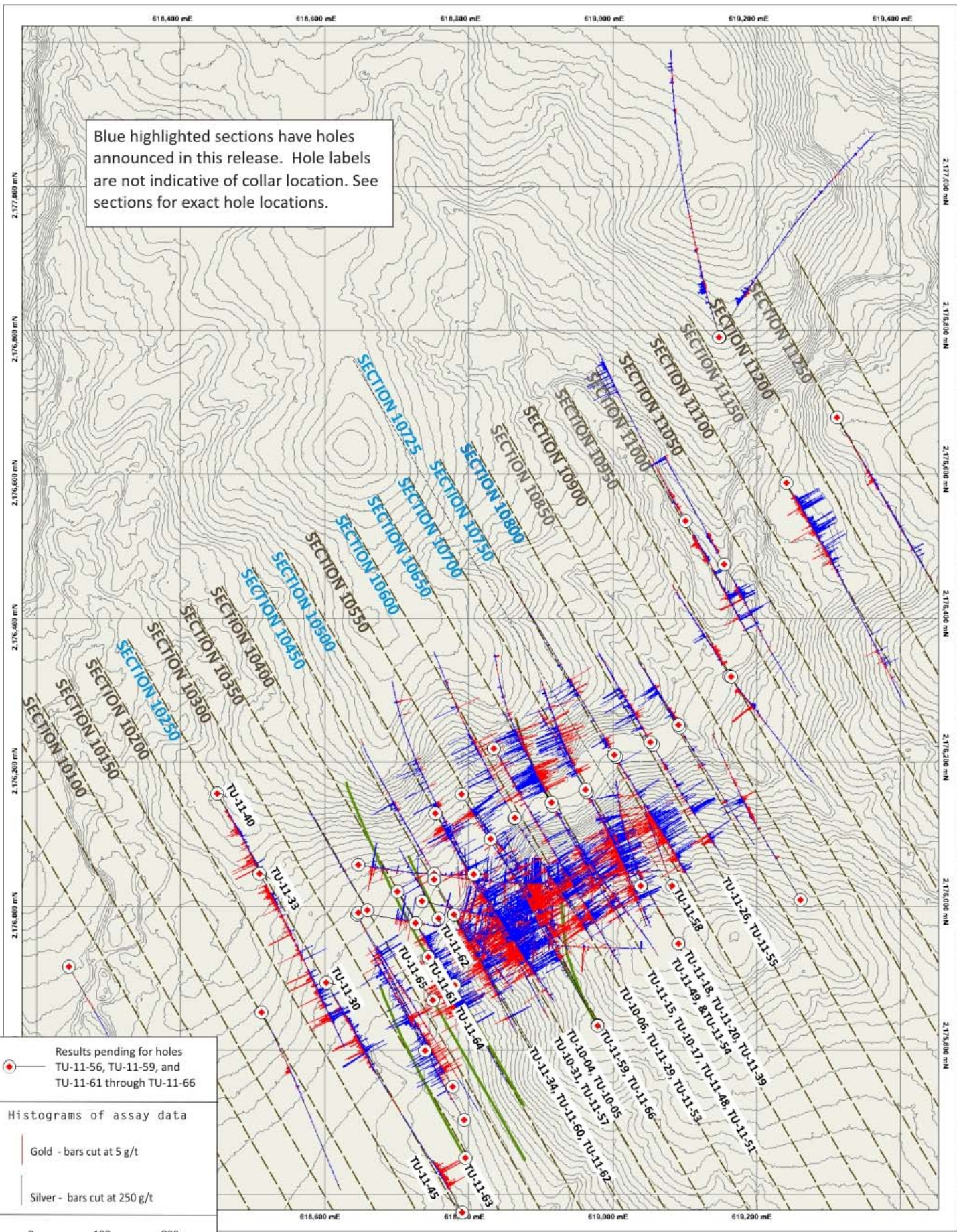

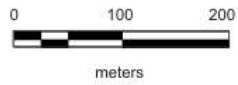


Blue highlighted sections have holes announced in this release. Hole labels are not indicative of collar location. See sections for exact hole locations.

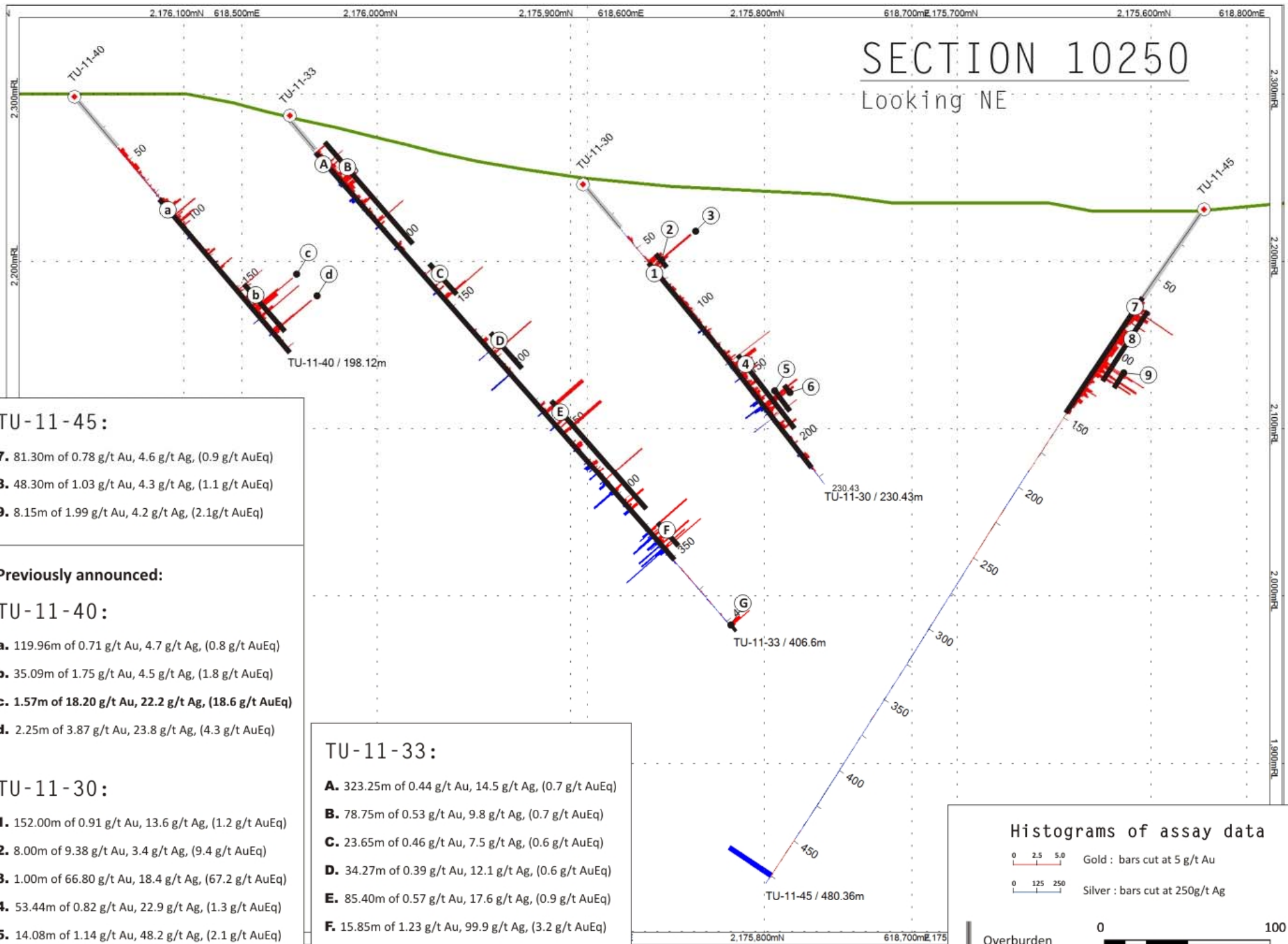


 Results pending for holes TU-11-56, TU-11-59, and TU-11-61 through TU-11-66
 Histograms of assay data
 Gold - bars cut at 5 g/t
 Silver - bars cut at 250 g/t



SECTION 10250

Looking NE



TU-11-45:

- 7.** 81.30m of 0.78 g/t Au, 4.6 g/t Ag, (0.9 g/t AuEq)
- 8.** 48.30m of 1.03 g/t Au, 4.3 g/t Ag, (1.1 g/t AuEq)
- 9.** 8.15m of 1.99 g/t Au, 4.2 g/t Ag, (2.1g/t AuEq)

Previously announced:

TU-11-40:

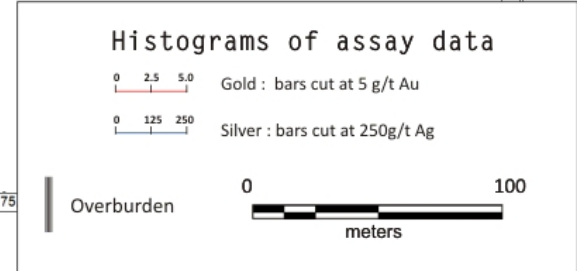
- a.** 119.96m of 0.71 g/t Au, 4.7 g/t Ag, (0.8 g/t AuEq)
- b.** 35.09m of 1.75 g/t Au, 4.5 g/t Ag, (1.8 g/t AuEq)
- c.** 1.57m of **18.20 g/t Au, 22.2 g/t Ag, (18.6 g/t AuEq)**
- d.** 2.25m of 3.87 g/t Au, 23.8 g/t Ag, (4.3 g/t AuEq)

TU-11-30:

- 1.** 152.00m of 0.91 g/t Au, 13.6 g/t Ag, (1.2 g/t AuEq)
- 2.** 8.00m of 9.38 g/t Au, 3.4 g/t Ag, (9.4 g/t AuEq)
- 3.** 1.00m of 66.80 g/t Au, 18.4 g/t Ag, (67.2 g/t AuEq)
- 4.** 53.44m of 0.82 g/t Au, 22.9 g/t Ag, (1.3 g/t AuEq)
- 5.** 14.08m of 1.14 g/t Au, 48.2 g/t Ag, (2.1 g/t AuEq)
- 6.** 3.00m of 3.31 g/t Au, 116.9 g/t Ag, (5.6 g/t AuEq)

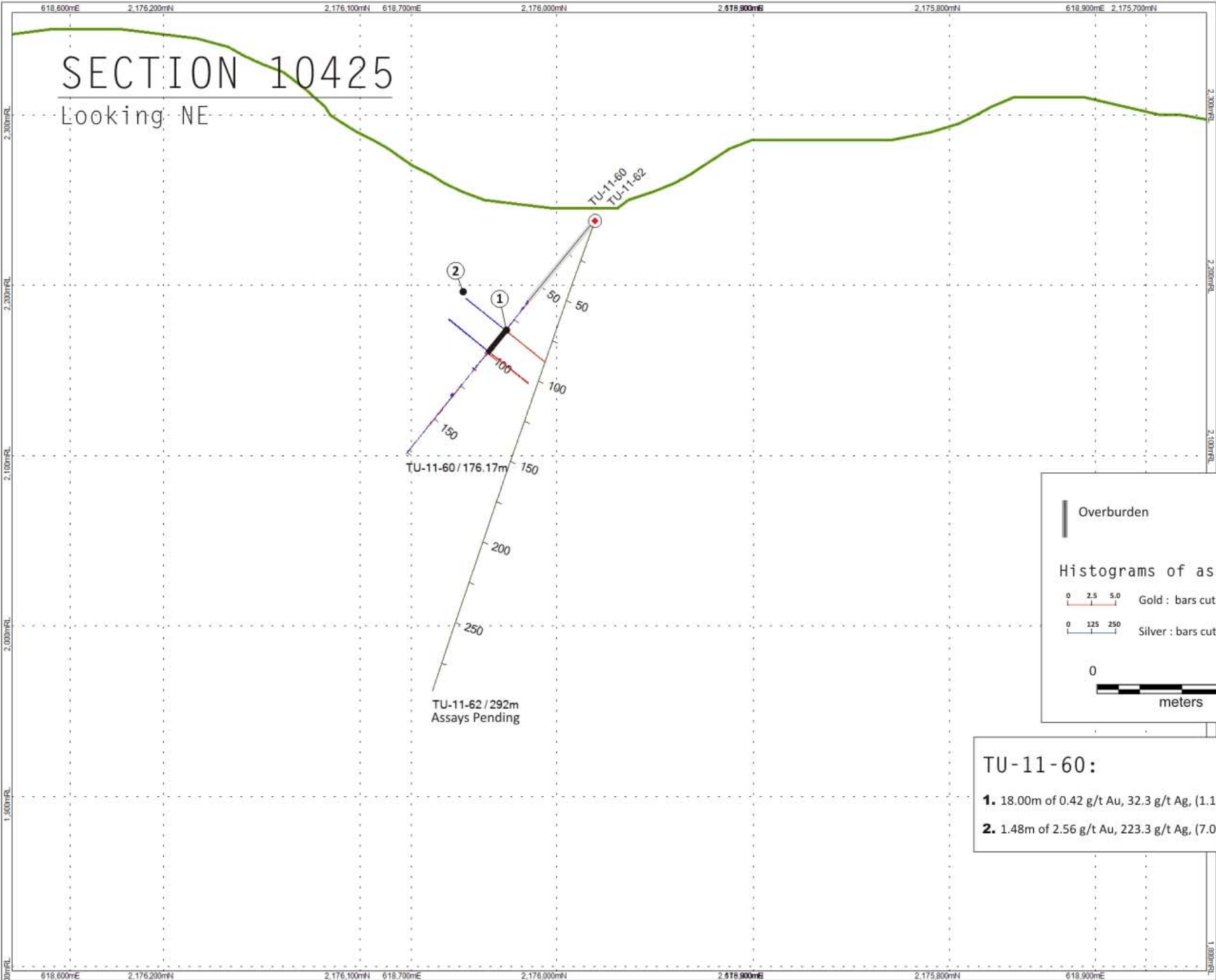
TU-11-33:

- A.** 323.25m of 0.44 g/t Au, 14.5 g/t Ag, (0.7 g/t AuEq)
- B.** 78.75m of 0.53 g/t Au, 9.8 g/t Ag, (0.7 g/t AuEq)
- C.** 23.65m of 0.46 g/t Au, 7.5 g/t Ag, (0.6 g/t AuEq)
- D.** 34.27m of 0.39 g/t Au, 12.1 g/t Ag, (0.6 g/t AuEq)
- E.** 85.40m of 0.57 g/t Au, 17.6 g/t Ag, (0.9 g/t AuEq)
- F.** 15.85m of 1.23 g/t Au, 99.9 g/t Ag, (3.2 g/t AuEq)
- G.** 2.85 m of 1.34 g/t Au, 7.4 g/t Ag, (1.5 g/t AuEq)



SECTION 10425

Looking NE



Overburden

Histograms of assay data

0 2.5 5.0 Gold : bars cut at 5 g/t Au

0 125 250 Silver : bars cut at 250g/t Ag

0 100 meters

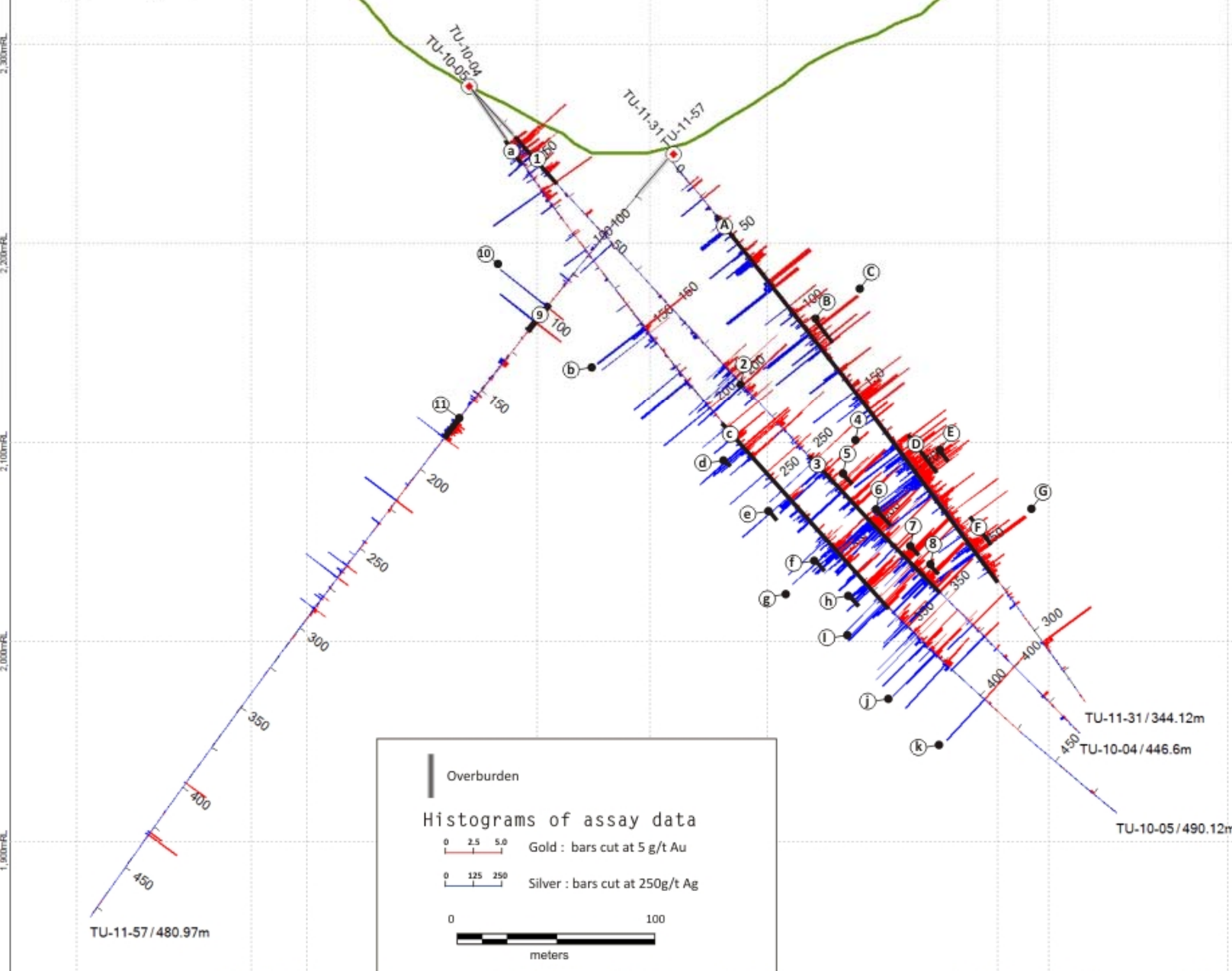
TU-11-60:

- 1. 18.00m of 0.42 g/t Au, 32.3 g/t Ag, (1.1 g/t AuEq)
- 2. 1.48m of 2.56 g/t Au, 223.3 g/t Ag, (7.0 g/t AuEq)

2,176,300mN 618,700mE 2,176,200mN 2,176,100mN 618,800mE 2,176,000mN 2,175,900mN 618,900mE 2,175,800mN

SECTION 10500

Looking NE



Overburden

Histograms of assay data

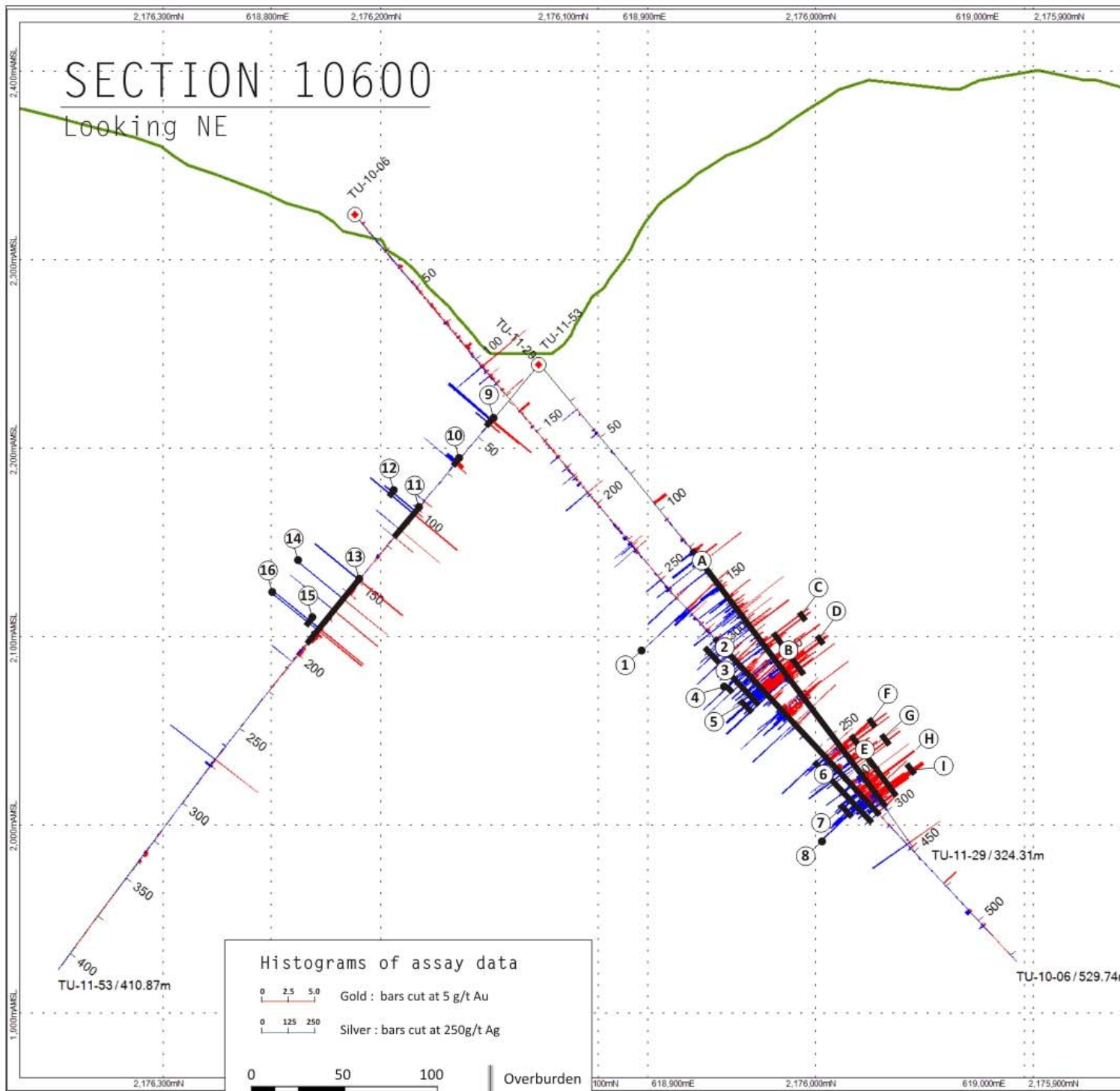
0 2.5 5.0 Gold : bars cut at 5 g/t Au

0 125 250 Silver : bars cut at 250g/t Ag

0 100 meters

- TU-11-57:**
- 9. 15.85m of 0.25 g/t Au, 47.2g/t Ag (1.2g/t AuEq)
 - 10. 1.25m of 0.85 g/t Au, 280.8 g/t Ag (6.5 g/t AuEq)
 - 11. 11.71m of 0.54 g/t Au, 34.2 g/t Ag (1.2 g/t AuEq)
- Previously announced:**
- TU-10-4:**
- 1. 21.30m of 0.66 g/t Au, 25.2 g/t Ag (1.2 g/t AuEq)
 - 2. 0.95m of 7.57 g/t Au, 882.3 g/t Ag (25.2 g/t AuEq)
 - 3. 94.65m of 1.33 g/t Au, 79.9 g/t Ag (2.9 g/t AuEq)
 - 4. 0.85m of 8.83 g/t Au, 1337 g/t Ag, (35.6 g/t AuEq)g/t
 - 5. 4.30m of 2.7 g/t Au, 151.3 g/t Ag, (5.7 g/t AuEq)
 - 6. 14.50m of 2.97 g/t Au, 158.8 g/t Ag, (6.1 g/t AuEq)
 - 7. 3.20m of 4.21 g/t Au, 97.3 g/t Ag, (6.2 g/t AuEq)
 - 8. 4.70m of 2.53 g/t Au, 198.7 g/t Ag, (6.5 g/t AuEq)
- TU-10-5:**
- a. 10.60m of 1.27 g/t Au, 26.3 g/t Ag, (1.8 g/t AuEq)
 - b. 1.25m of 2.80 g/t Au, 706.0 g/t Ag, (16.9 g/t AuEq)
 - c. 122.10m of 0.74 g/t Au, 40.9 g/t Ag, (1.6 g/t AuEq)
 - d. 2.90m of 3.78 g/t Au, 230.2 g/t Ag, (8.4 g/t AuEq)
 - e. 2.89m of 3.04 g/t Au, 185.1 g/t Ag, (6.7g/t AuEq)
 - f. 4.74m of 3.50 g/t Au, 128.1 g/t Ag, (6.1 g/t AuEq)
 - g. 0.45m of 14.04 g/t Au, 366.1 g/t Ag, (21.4 g/t AuEq)
 - h. 4.65m of 4.24 g/t Au, 127.3 g/t Ag, (6.8 g/t AuEq)
 - i. 0.83m of 14.30 g/t Au, 150.0 g/t Ag, (17.3g/t AuEq)
 - j. 0.93m of 3.60 g/t Au, 476.2 g/t Ag, (13.1 g/t AuEq)
 - k. 0.52m of 37.40g/t Au, 466.0 g/t Ag, (46.7 g/t AuEq)
- TU-11-31:**
- A. 226.62m of 0.76 g/t Au, 57.7g/t Ag (1.9g/t AuEq)
 - B. 11.30m of 1.84 g/t Au, 146.5 g/t Ag (4.8 g/t AuEq)
 - C. 1.40m of 5.64 g/t Au, 500.0 g/t Ag (15.6 g/t AuEq)
 - D. 23.20m of 1.91 g/t Au, 152.6 g/t Ag, (5.0 g/t AuEq)
 - E. 4.60m of 2.48 g/t Au, 357.6 g/t Ag, (9.6 g/t AuEq)
 - F. 17.10m of 1.43 g/t Au, 84.2 g/t Ag, (3.1 g/t AuEq)
 - G. 1.55m of 7.47 g/t Au, 536.6 g/t Ag, (18.2 g/t AuEq)

618,700mE 2,176,200mN 2,176,100mN 618,800mE 2,176,000mN 2,175,900mN 618,900mE 2,175,800mN



SECTION 10600

Looking NE

TU-11-53:

- 9. 3.15m of 152.g/t Au, 244.3g/t Ag, (6.4 g/t AuEq)
- 10. 2.77m of 0.57g/t Au, 94.2g/t Ag, (2.4 g/t AuEq)
- 11. 19.70m of 0.44g/t Au, 36.6g/tAg, (1.2 g/t AuEq)
- 12. 2.15m of 2.87g/t Au, 242.6g/t Ag, (7.7 g/t AuEq)
- 13. 41.96m of 0.64g/t Au, 49.1g/t Ag, (1.6 g/t AuEq)
- 14. 2.04m of 2.94g/t Au, 279.4g/t Ag, (8.5g/t AuEq)
- 15. 3.52m of 2.63g/t Au, 237.9g/t Ag, (7.4g/t AuEq)
- 16. 1.46m of 5.75g/t Au, 552.9g/t Ag, (16.8g/t AuEq)

Previously announced:

TU-10-6 :

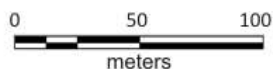
- 1. 2.69m of 2.09g/t Au, 202.6g/t Ag, (6.1 g/t AuEq)
- 2. 126.22m of 0.86g/t Au, 61.7g/t Ag, (2.1 g/t AuEq)
- 3. 45.07m of 1.38g/t Au, 92.3g/tAg, (3.2 g/t AuEq)
- 4. 2.19m of 6.66g/t Au, 474.9g/t Ag, (16.2 g/t AuEq)
- 5. 5.07m of 5.45g/t Au, 242.4g/t Ag, (10.3 g/t AuEq)
- 6. 42.3m of 0.77g/t Au, 61.2g/t Ag, (2.0g/t AuEq)
- 7. 6.22m of 2.55g/t Au, 209g/t Ag, (6.7g/t AuEq)
- 8. 1.20m of 6.83g/t Au, 482.4g/t Ag, (16.5g/t AuEq)

TU-11-29:

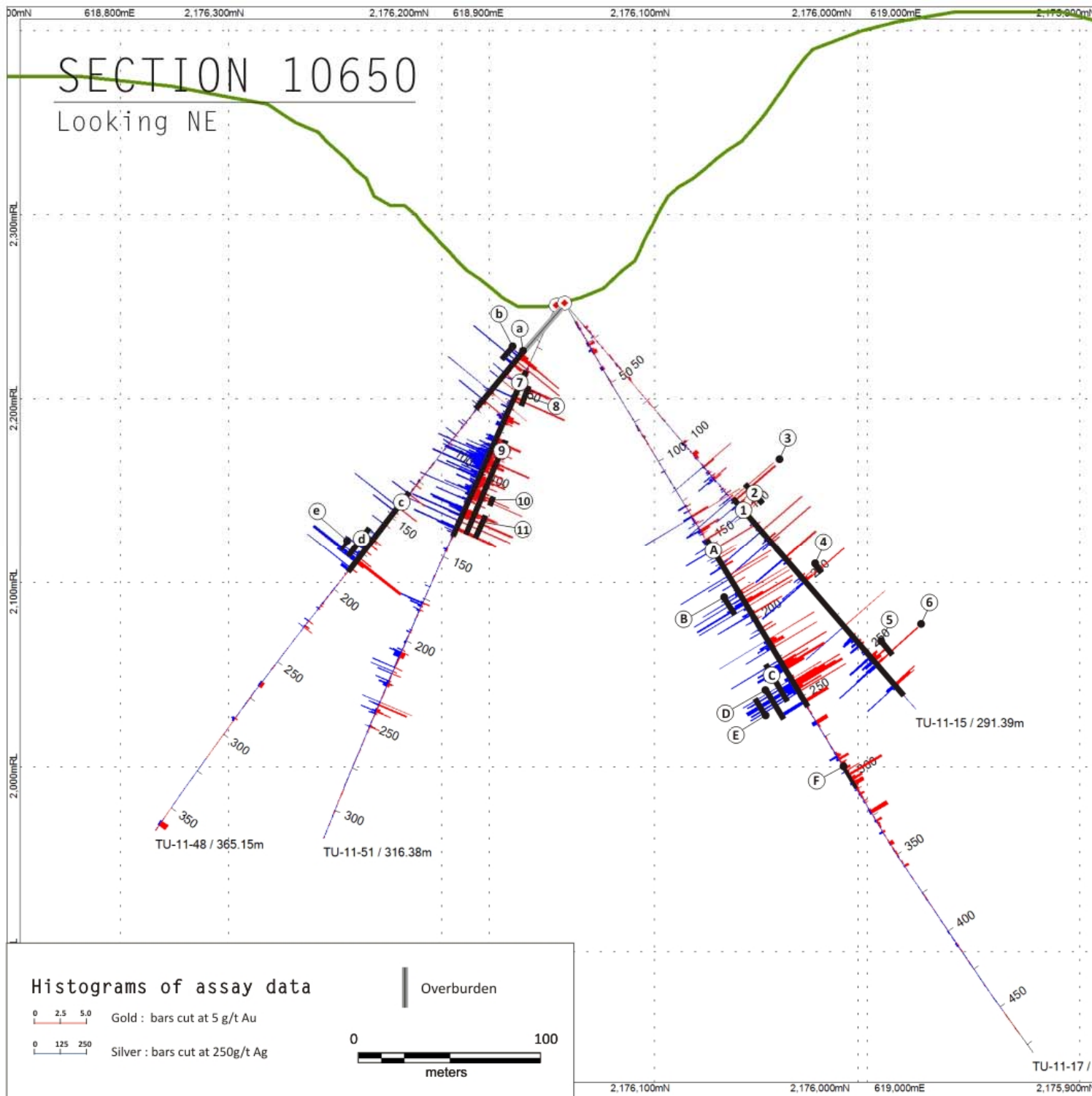
- A. 167.97m of 0.88g/t Au, 61.1g/t Ag, (2.1 g/t AuEq)
- B. 25.46m of 2.28g/t Au, 134.5g/t Ag, (5.0g/t AuEq)
- C. 2.49m of 4.54g/t Au, 385.1g/t Ag, (12.2g/t AuEq)
- D. 2.72m of 10.78g/t Au, 533.7g/t Ag, (21.5 g/t AuEq)
- E. 38.33m of 1.77g/t Au, 106.6g/t Ag, (3.9g/t AuEq)
- F. 2.59m of 3.54g/t Au, 107.3g/t Ag, (5.7g/t AuEq)
- G. 3.92m of 4.15g/t Au, 386.3g/tAg, (11.9g/t AuEq)
- H. 1.90m of 7.11g/t Au, 713.5g/t Ag, (21.4 g/t AuEq)
- I. 4.14m of 4.65g/t Au, 255.9g/t Ag, (9.8 g/t AuEq)

Histograms of assay data

- 0 2.5 5.0 Gold : bars cut at 5 g/t Au
- 0 125 250 Silver : bars cut at 250g/t Ag



Overburden



TU-11-51:

- 7.** 98.58m of 0.92 g/t Au, 76.3 g/t Ag, (2.5 g/t AuEq)
- 8.** 9.25m of 1.54 g/t Au, 30.65 g/t Ag, (2.2 g/t AuEq)
- 9.** 53.50m of 1.26 g/t Au, 120.1 g/t Ag, (3.7 g/t AuEq)
- 10.** 2.20m of 4.03 g/t Au, 215.3 g/t Ag, (8.3 g/t AuEq)
- 11.** 12.67m of 1.62g/t Au, 142.1 g/t Ag, (4.5 g/t AuEq)

Previously announced:

TU-11-48:

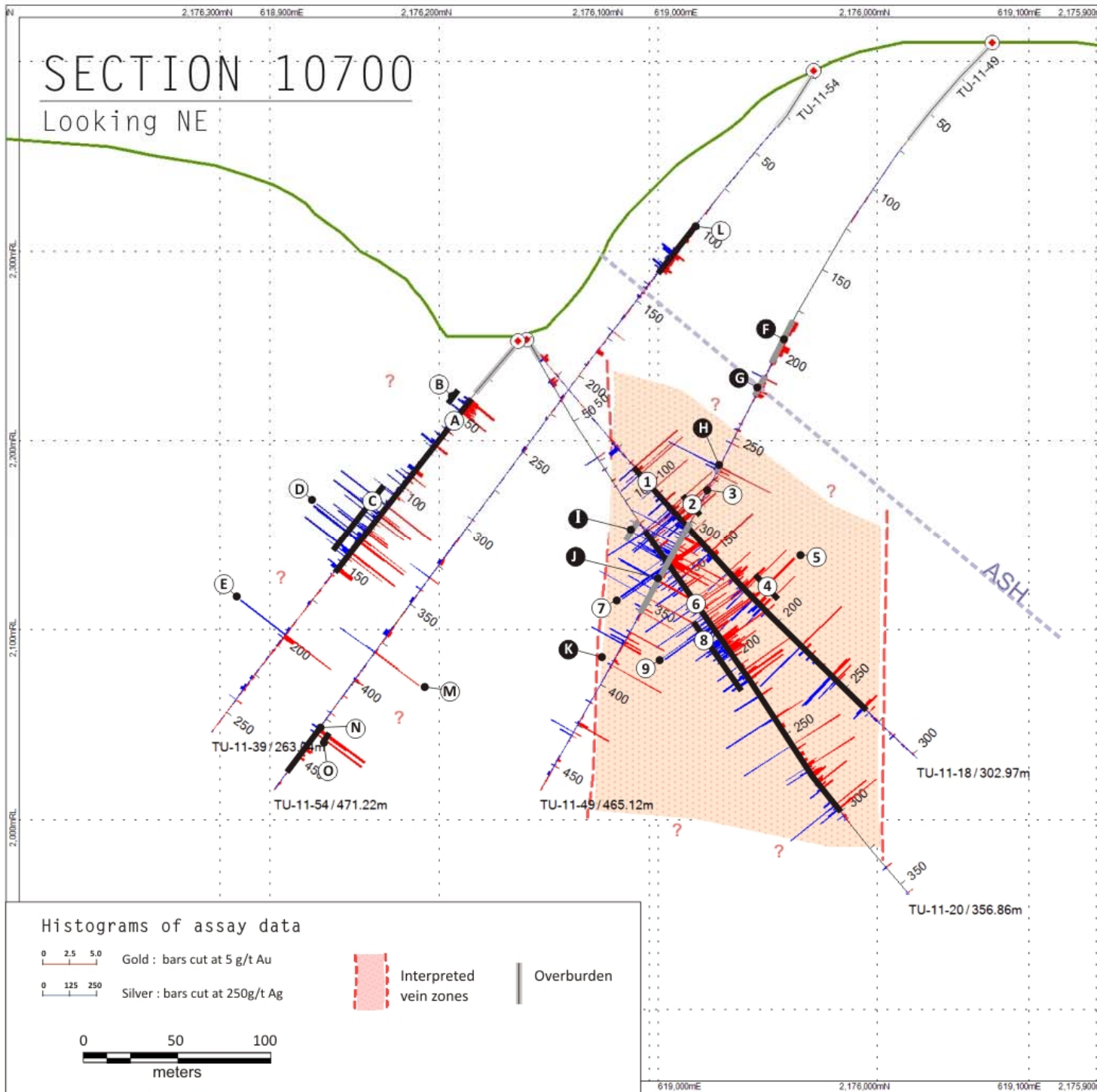
- a.** 38.79m of 0.49 g/t Au, 44.0g/t Ag, (1.4 g/t AuEq)
- b.** 7.00m of 1.70 g/t Au, 148.5g/t Ag, (4.7 g/t AuEq)
- c.** 53.74m of 0.58 g/t Au, 86.2g/t Ag, (2.3 g/t AuEq)
- d.** 16.85m of 1.58 g/t Au, 212.2g/t Ag, (5.8 g/t AuEq)
- e.** 3.47m of 7.25g/t Au, 847.0 g/t Ag, (24.2 g/t AuEq)

TU-10-15:

- 1.** 137.7m of 0.82 g/t Au, 28.4g/t Ag, (1.4 g/t AuEq)
- 2.** 12.29m of 6.16 g/t Au, 40.4g/t Ag, (7.0 g/t AuEq)
- 3.** 2.30m of **31.46 g/t Au, 69.4g/t Ag, (32.8 g/t AuEq)**
- 4.** 2.59m of 1.68 g/t Au, 148.0g/t Ag, (4.6 g/t AuEq)
- 5.** 6.2m of 1.2 g/t Au, 122.5 g/t Ag, (3.7 g/t AuEq)
- 6.** 1.18m of 3.49 g/t Au, 237.5 g/t Ag, (8.2 g/t AuEq)

TU-10-17:

- A.** 104.47m of 0.79 g/t Au, 77.7 g/t Ag, (2.3 g/t AuEq)
- B.** 7.76m of 1.46 g/t Au, 123.3 g/t Ag, (3.9 g/t AuEq)
- C.** 20.72m of 1.87 g/t Au, 228.2 g/t Ag, (6.4 g/t AuEq)
- D.** 15.07m of 1.79 g/t Au, 260.8 g/t Ag, (7.0 g/t AuEq)
- E.** 8.27m of 2.68 g/t Au, 416.9 g/t Ag, (11.0 g/t AuEq)
- F.** 8.25m of 0.88 g/t Au, 9.1 g/t Ag, (1.1 g/t AuEq)



TU-11-54:

- L.** 28.75m of 0.39 g/t Au, 25.9 g/t Ag, (0.9 g/t AuEq)
- M.** 0.69m of 2.24 g/t Au, 140.6 g/t Ag, (5.1 g/t AuEq)
- N.** 26.92m of 0.67 g/t Au, 7.5 g/t Ag, (0.8 g/t AuEq)
- O.** 3.56m of 3.82 g/t Au, 28.4 g/t Ag, (4.4 g/t AuEq)

Previously announced:

TU-11-49:

- F.** 26.00m of 0.40 g/t Au, 8.9 g/t Ag, (0.6 g/t AuEq)
- G.** 12.41m of 0.41 g/t Au, 14.7 g/t Ag, (0.7 g/t AuEq)
- H.** 4.27m, 1.1g/t Au, 113.4 g/t Ag, (3.4 g/t AuEq)
- I.** 7.80m of 1.85 g/t Au, 140.6 g/t Ag, (4.6 g/t AuEq)
- J.** 58.15m of 0.52 g/t Au, 38.3 g/t Ag, (1.3 g/t AuEq)
- K.** 5.08m of 2.61 g/t Au, 5.4 g/t Ag, (2.7 g/t AuEq)

TU-11-39:

- A.** 115.35m of 0.48 g/t Au, 37.7 g/t Ag, (1.2 g/t AuEq)
- B.** 8.86m of 1.31 g/t Au, 33.0 g/t Ag, (2.0 g/t AuEq)
- C.** 33.60m of 0.90 g/t Au, 87.4 g/t Ag, (2.6 g/t AuEq)
- D.** 19.60m of 1.05 g/t Au, 101.8 g/t Ag, (3.1 g/t AuEq)
- E.** 1.20m of 7.29 g/t Au, 487.2 g/t Ag, (17.0 g/t AuEq)

TU-11-18:

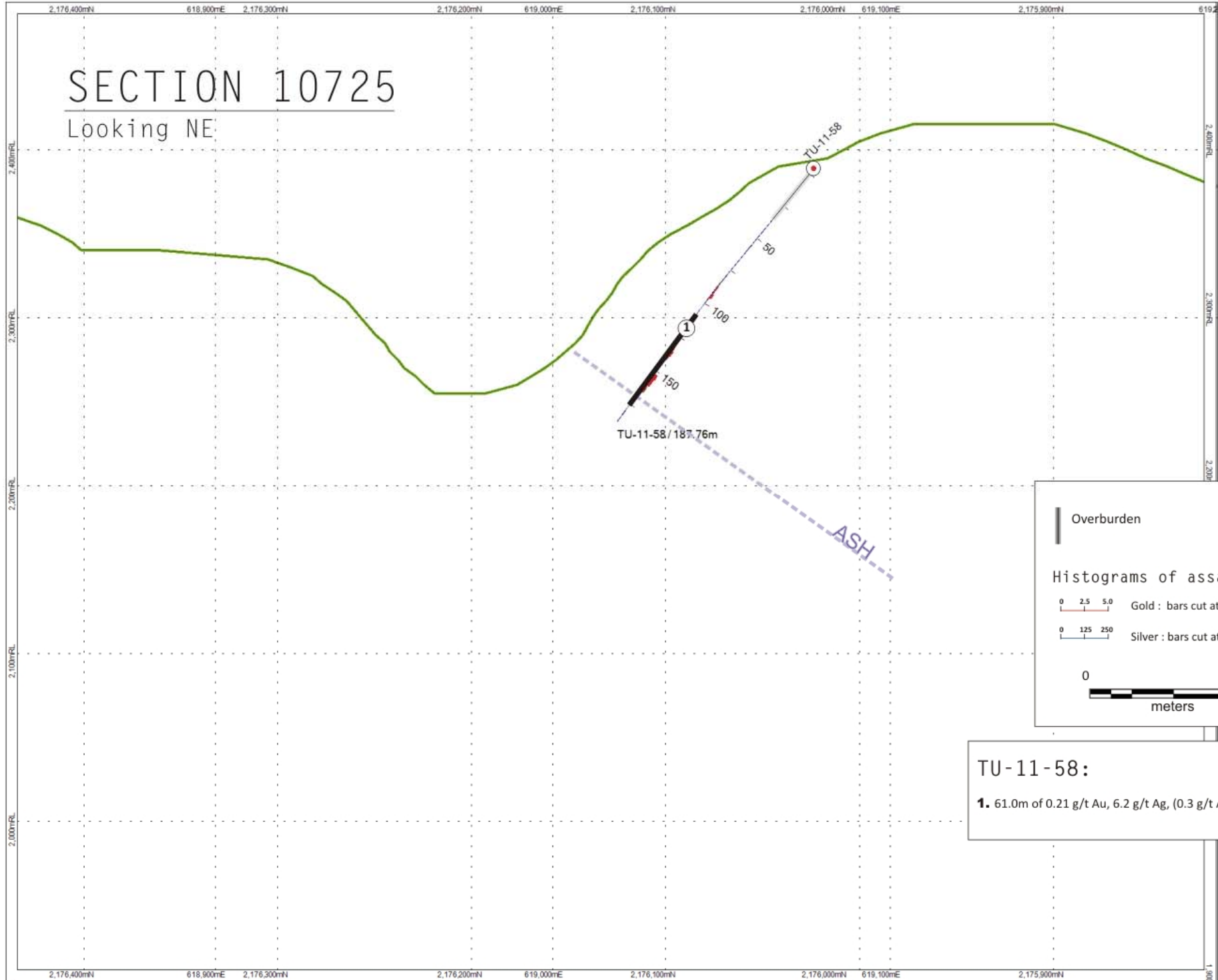
- 1.** 179.87m of 0.40 g/t Au, 32.6 g/t Ag, (1.1 g/t AuEq)
- 2.** 10.77m of 1.65 g/t Au, 114.6 g/t Ag, (3.9 g/t AuEq)
- 3.** 1.60m of 4.19 g/t Au, 336.4 g/t Ag, (10.9 g/t AuEq)
- 4.** 15.67m of 1.09 g/t Au, 66.1 g/t Ag, (2.4 g/t AuEq)
- 5.** 0.97m of 6.65 g/t Au, 348.5 g/t Ag, (13.6 g/t AuEq)

TU-11-20:

- 6.** 179.20m of 0.55 g/t Au, 35.9 g/t Ag, (1.3 g/t AuEq)
- 7.** 2.10m of 3.20 g/t Au, 302.8 g/t Ag, (9.3 g/t AuEq)
- 8.** 42.21m of 1.05 g/t Au, 62.5 g/t Ag, (2.3 g/t AuEq)
- 9.** 2.89m of 2.99 g/t Au, 276.7 g/t Ag, (8.5 g/t AuEq)

SECTION 10725

Looking NE



Overburden

Histograms of assay data

0 2.5 5.0 Gold : bars cut at 5 g/t Au

0 125 250 Silver : bars cut at 250g/t Ag

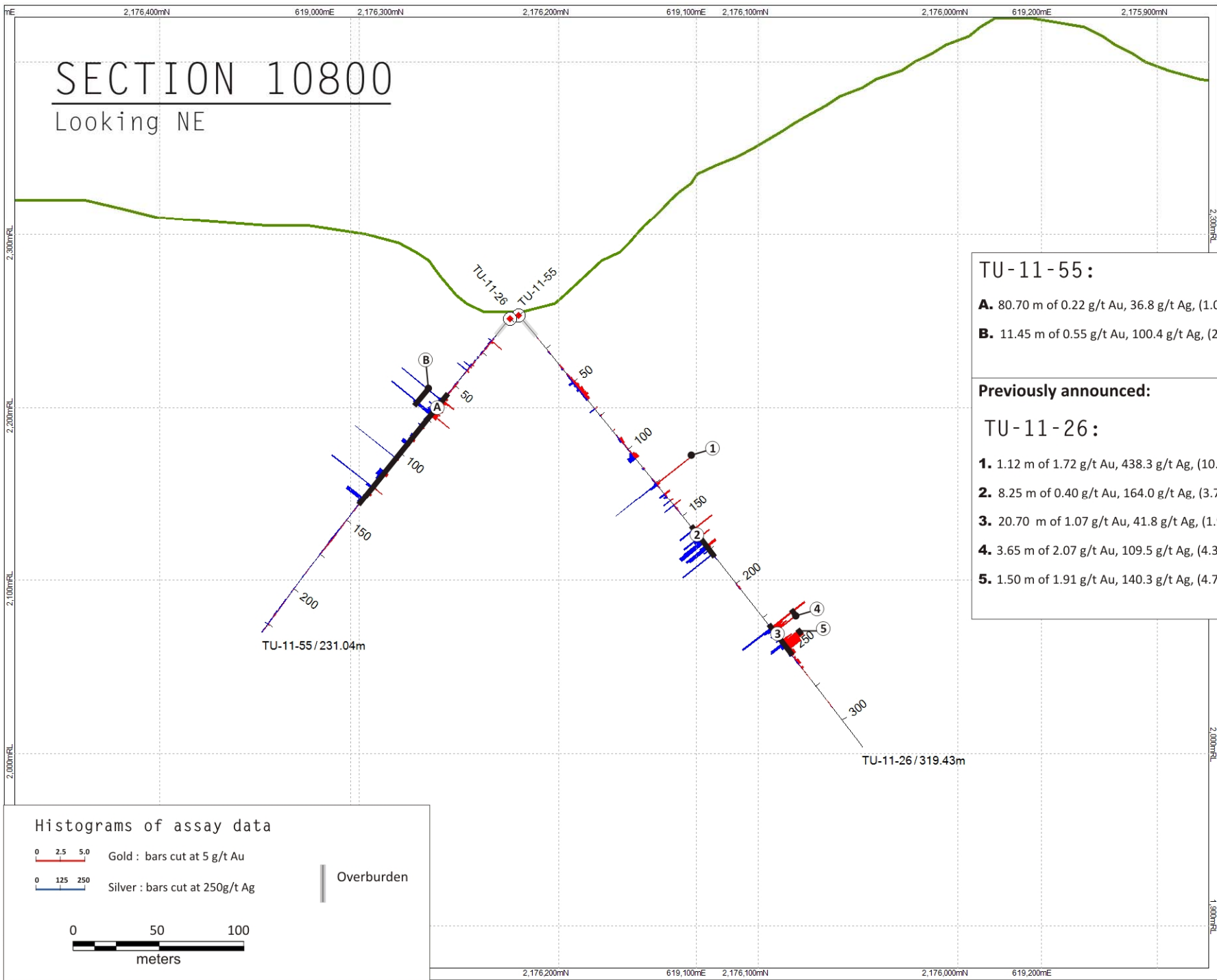
0 100 meters

TU-11-58:

1. 61.0m of 0.21 g/t Au, 6.2 g/t Ag, (0.3 g/t AuEq)

SECTION 10800

Looking NE



TU-11-55:

- A.** 80.70 m of 0.22 g/t Au, 36.8 g/t Ag, (1.0 g/t AuEq)
- B.** 11.45 m of 0.55 g/t Au, 100.4 g/t Ag, (2.6 g/t AuEq)

Previously announced:

TU-11-26:

- 1.** 1.12 m of 1.72 g/t Au, 438.3 g/t Ag, (10.5 g/t AuEq)
- 2.** 8.25 m of 0.40 g/t Au, 164.0 g/t Ag, (3.7 g/t AuEq)
- 3.** 20.70 m of 1.07 g/t Au, 41.8 g/t Ag, (1.9 g/t AuEq)
- 4.** 3.65 m of 2.07 g/t Au, 109.5 g/t Ag, (4.3 g/t AuEq)
- 5.** 1.50 m of 1.91 g/t Au, 140.3 g/t Ag, (4.7 g/t AuEq)

Histograms of assay data

0 2.5 5.0 Gold : bars cut at 5 g/t Au

0 125 250 Silver : bars cut at 250g/t Ag

Overburden

